

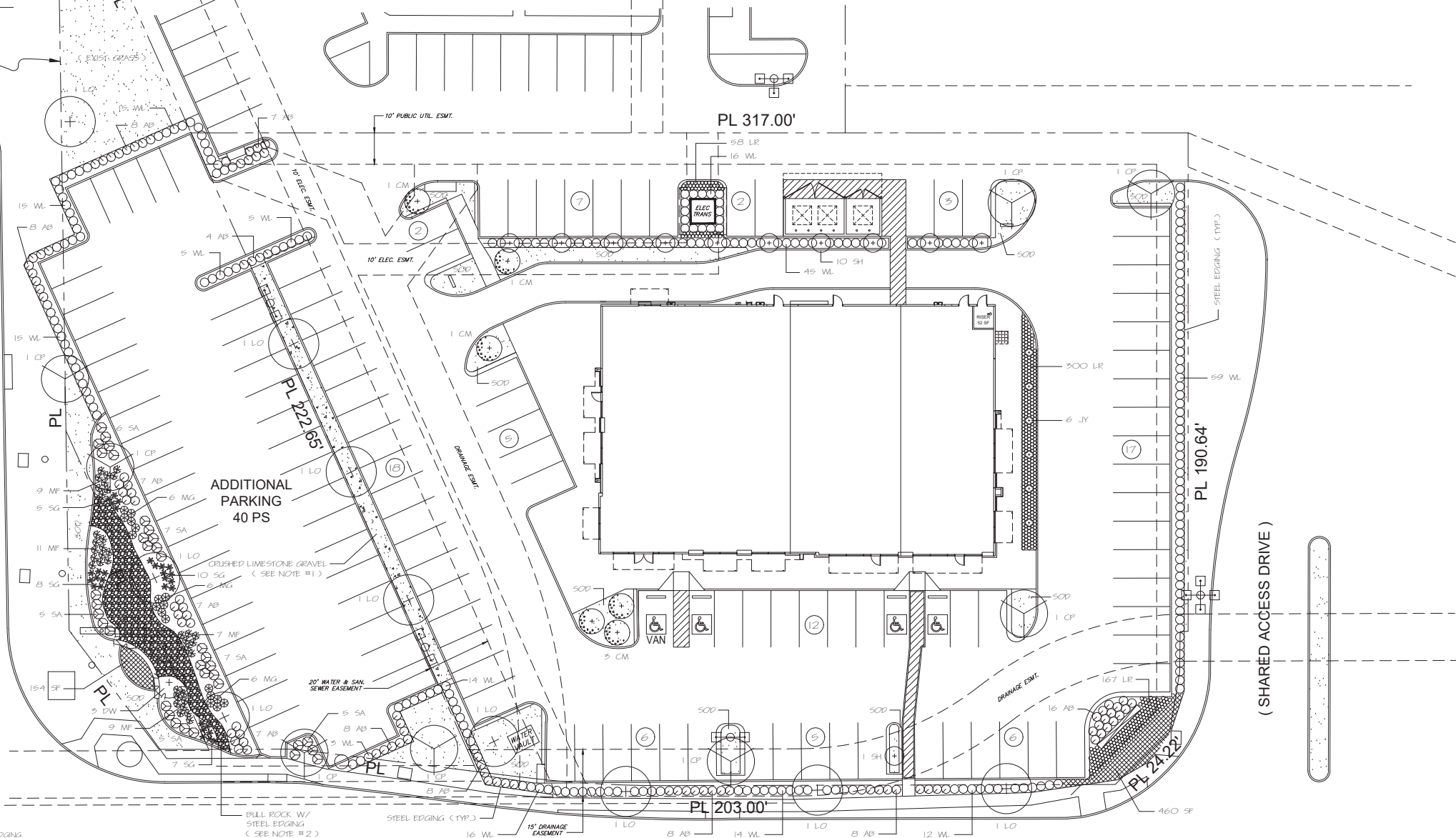


- 1.) General Contractor to bring all areas to final grade with a bomblaze using a good quality, gradable topsoil.
- 2.) Prepare all new planting beds by removing all rocks, concrete and construction debris and till in 5" to 4" of new Soil Mix and pre-emergent herbicide (such as Pemat or Eptam) at the recommended rates, then rake all beds smooth prior to planting.
- 3.) Grade all planting beds to edges of beds and away from buildings prior to planting for positive drainage away from foundation. • Install erosion Ryerson Steel landscape edging (1/8" thick x 4" tall) between turf and planting beds. Cut exposed corners at 45 degrees when steel butts up against curbs or walkways for pedestrian safety.
- 4.) Fertilize all lawns, shrubs and groundcovers with Osmocote (or equal) timed release fertilizer.
- 5.) Mutch all new planting beds and trees with a 2" (avg.) layer of shredded hardwood topdress mulch such as from Letco or C.J.M. Soil Supermarket.
- 6.) Double-Steel all specified trees (see plant list) with a 2" tall painted metal T-Posts, multi-strand coated steel wire and clear vinyl tubing.
- 7.) Root-Stock all new trees with Superthrive brand root-stimulator (or equal) as per manufacturers recommendations.
- 8.) Plant sizes shown are the minimum acceptable. Plants will be inspected and measured for conformance. Plants specified with container size only shall be of or better than locally accepted nursery standards. Obviously undersized, misshapen, weak or inadequately rooted plants will be rejected. The Owner's decision on this or in matters concerning plant quality, condition and health. Plants larger in size than specified may be used if approved by the Landscape Architect or the Owner, but the use of larger plants will not automatically increase the contract amount.
- 9.) Thoroughly hand water all new plantings immediately after planting.
- 10.) The grade all new turf areas (by hand if necessary) prior to installation of grass. This is for a nice smooth turf-bed as well as for normal drainage purposes.
- 11.) Solid sod within property to be 99 percent pure Common Bermudagrass. Sod to be rolled immediately after wetting and installation. Hydromulch all construction disturbed turgrass areas outside of property with Common Bermudagrass hydromulch at a rate of 2 lbs, hulls sseed per 1000 sq. ft. Slurry to include 100 lbs per acre of Turfgrass Seed.
- 12.) Landscape Contractor is responsible for keeping jobsite neat, clean and safe at all times in reference to their landscape work. Excess excavated soil, accumulations of landscape related trash, plant containers etc. to be removed from jobsite by Landscape Contractor daily and at the end of the project.
- 13.) The Owner, Landscape Architect and general Contractor reserve the right to inspect the progress of the project and any or all of the materials and procedures used at any time. Such materials and procedures will be subject to approval or rejection at that time and promptly followed up in writing to all concerned parties.



		PLANT LIST		
QUANT.	SYMBOL	PLANT TYPE	SIZE	NOTES
96	A B	ROSE CREEK ABELIA <i>Abelia grandiflora</i> 'Rose Creek'	3 GAL.	2-9" OC., FULL, HEALTHY 24" - 30" HT X 24" - 30" SPR.
6	CM	CRAPE MYRTLE, 'Watermelon Red' <i>Lagerfloræa indica</i>	30 GAL. 3" CAL. MIN.	MULTI-TRUNK, DOUBLE-STAKED 8 - 10" HT X 4 - 5" SPR., MATCHING
8	CP	CHINESE PISTACHE <i>Pistacia chinensis</i>	65 GAL. 3" CAL. MIN.	SINGLE-TRUNK, DOUBLE-STAKED 11 - 14" HT X 5 - 6" SPR., MATCHING
3	DW	DESERT WILLOW <i>Cholipais linearis</i>	30 GAL. 1.5" CAL. MIN.	SINGLE-TRUNK, DOUBLE-STAKED 8 MIN HT X 5 - 6" SPR., MATCHING
6	J Y	JAPANESE YEW <i>Podocarpus macrophyllus</i>	15 GAL. 5 - 6" HT X 3 - 5" SPR.	SINGLE-TRUNK, FULL, HEALTHY 11 - 14" HT X 5 - 6" SPR.
11	LO	LIVE OAK <i>Quercus virginiana</i>	65 GAL. 3" CAL. MIN.	SINGLE-TRUNK, DOUBLE-STAKED 11 - 14" HT X 5 - 6" SPR., MATCHING
525	LR	LIRIOPE, BIG BLUE <i>Liriope spicata</i> 'Big Blue'	1 GAL.	13" OC., FULL, HEALTHY, MATCHING 6 - 8" HT. X 6 - 8" SPR.
36	M F	MEXCAN FEATHER GRASS <i>Stipa tenacissima</i>	3 GAL.	2 - 3" OC., FULL, HEALTHY, MATCHING 12" - 16" HT X 18" - 20" SPR.
18	MG	ADAGIO MAIDEN GRASS <i>Miscanthus sinensis</i> 'Adagio'	3 GAL.	2 - 6" OC., FULL, HEALTHY, MATCHING 20" - 24" HT X 14" - 18" SPR.
35	SA	TEXAS SAGE <i>Leucophyllum frutescens</i> 'Compactum'	3 GAL.	3 OC., FULL, HEALTHY, MATCHING 22" - 28" HT. X 18" - 22" SPR.
614	S F	SEASONAL FLOWERS	4" POTS	9" OC., FULL, 'BLOOMING'
30	S G	SALVIA 'REGENT' <i>Salvia greggii</i>	3 GAL.	2 - 3" OC., FULL, HEALTHY, MATCHING 12" - 16" HT. X 18" - 20" SPR.
11	S H	SAVANNAH HOLLY <i>Ilex x attenuata</i> var Savannah	30 GAL. 1.75" CAL. MIN.	SINGLE-TRUNK, FULL TO GROUND 7 - 9" HT. X 3.5 - 4" SPR.
234	WL	WAXLEAF LIGUSTRUM <i>Ligustrum japonicum</i>	3 GAL.	2 - 9" OC., FULL, HEALTHY, MATCHING 28" - 34" HT X 20" - 26" SPR.
HYDRO		COMMON BERMAUDAGRASS <i>Cynodon dactylon</i>	SQ. FT.	WITH GREEN CELLULOSE FIBER AND FERTILIZER, APPLY AS NEEDED
SOD		COMMON BERMAUDAGRASS <i>Cynodon dactylon</i>	SQ. YD.	SOLID SOD, ROLLED INSTALL WHERE INDICATED

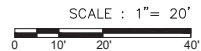
CITY OF NORTH RICHLAND HILLS LANDSCAPE ANALYSIS FORM				
A.) LANDSCAPE AREA				
TOTAL SITE AREA	55,699 S.F.			
LANDSCAPE AREA	5,490 S.F.			
	5,490 S.F. / 55,699 S.F. = 10%		LANDSCAPE AREA	
TREE CREDITS				
	11 (3" CAL.) TREES	X	600 S.F. =	6,600 S.F.
	17 (1.5" CAL.) TREES	X	300 S.F. =	5,100 S.F.
	11,700 S.F. / 55,699 S.F. = 21%		LANDSCAPE AREA	
	10% + 21% = 31%		COMBINED LANDSCAPE AREA	
B.) STREET TREES				
RUFÉ SNOW DRIVE	316.75' / 50' =	6	STREET TREES REQUIRED	
IH LOOP 820	301.00' / 50' =	6	STREET TREES REQUIRED	
C.) SHRUBS				
215.11' / 50' = 4.3	X	10 =	43	SMALL SHRUBS REQUIRED
D.) PARKING LOT TREES				
PARKING SPACES	81 / 20 =	4	PARKING LOT TREES REQUIRED	



- 1) APPLY / INSTALL CRUSHED (WASHED) LIMESTONE GRAVEL (SMALL AGGREGATE SIZE) IN AREA INDICATED AT A DEPTH OF 2.5" MINIMUM. GRAVEL TO BE LEVEL WITH TOPS OF CURBS UPON INSTALLATION.
- 2) DECORATIVE BULL ROCK AT CORNER PLANTING BED TO BE A 5" - 1" LAYER OF COMMON GRASS SEED (21" WIDE). (BULL ROCK)
- 3) SOLID SOD ALL TURFGRASS AREAS WITHIN PROPERTY LINES WITH SOLID COMMON BERMUDAGRASS SOD. REPAIR ALL CONSTRUCTION DISTURBED TURFGRASS AREAS OUTSIDE PROPERTY LINES WITH COMMON BERMUDAGRASS HYDROMULCH.
- 4) ALL NEW LANDSCAPE AREAS AND PLANTINGS TO BE IRRIGATED WITH A PERMANENT IRRIGATION AND/OR AUTOMATIC LANDSCAPE IRRIGATION SYSTEM. SYSTEM TO INCLUDE RAIN / FREEZE SENSOR/ SWITCH. (ALL NEW LARGE TREES TO BE ON SEPARATE DRAINER ZONES)

RUFE SNOW DRIVE

LANDSCAPE PLAN



8/06/19
STATE OF TEXAS
DUANE BUNGO
1375
LANDSCAPE ARCHITECT
10-5-FA

Integrated Landscape Architecture,
LLC
765 Rolling Oaks Dr
Driftwood, TX 78619
Phone (713) 973-7851
Duane Bungo

[illegible]

DRAWING NUMBER:

identityARCHITECTS

www.identityarchitects.com

713.595.2150

111 Travis Street, Houston, Texas 77002