

building
A

Building B

Proposed site of
Canopy (Yellow)

GENERAL NOTES

GENERAL DESIGN: CANOPY DESIGN TO BE HIP STRUCTURE. SHOP DRAWINGS MUST BE APPROVED BY U-HAUL CONSTRUCTION DEPARTMENT PRIOR TO ORDER/MANUFACTURE.

DESIGN LOADS:

DESIGN TO MEET OR EXCEED THE REQUIREMENTS OF THE 2006 IBC, AND/OR LOCAL GOVERNING CODE. REFER TO SHOP DRAWINGS FOR PROJECT SPECIFIC DESIGN/ENGINEERING AND GEOGRAPHICAL CONDITIONS FOR LIVE LOADS.

NOTES:

DESIGN STRUCTURE TO 5 PSF SNOW LOAD. FABRIC TOP TO BE REMOVED IF SNOW ACCUMULATION IS ANTICIPATED.

FABRIC TOP TO BE REMOVED IF WINDS EXCEEDING 90 MPH ARE ANTICIPATED.

STRUCTURAL STEEL SHALL CONFORM TO AISC SPECIFICATIONS AND CODE OF STANDARD PRACTICES.

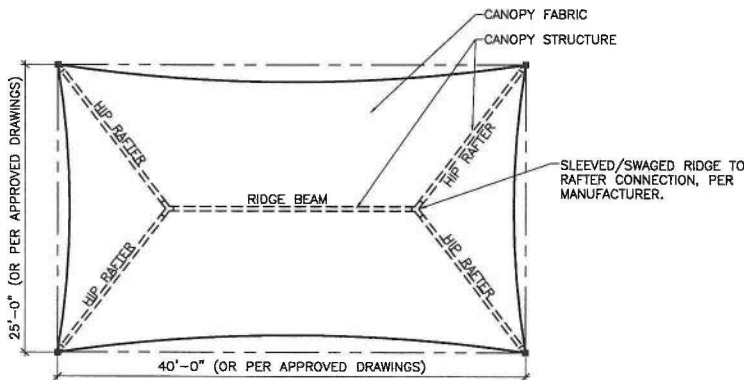
STEEL MATERIAL SCHEDULE:

ITEMS	SPECIFICATIONS
HSS TUBE STEEL	ASTM A500, GRADE B.
ROUND HSS OR STEEL PIPE	ASTM A500, GRADE B OR ASTM A53, GRADE B.
ROUND STEEL TUBING	ASTM A500
GUSSET PLATES	ASTM A36
HEX BOLTS	ASTM A325
NUTS	ASTM A563
WASHERS	ASTM F436
REINFORCING STEEL	ASTM A615, GRADE 60 (GALVANIZED)
ANCHOR RODS	ASTM F1554 GRADE 55 (GALVANIZED)
WELDING ELECTRODES	E70XX

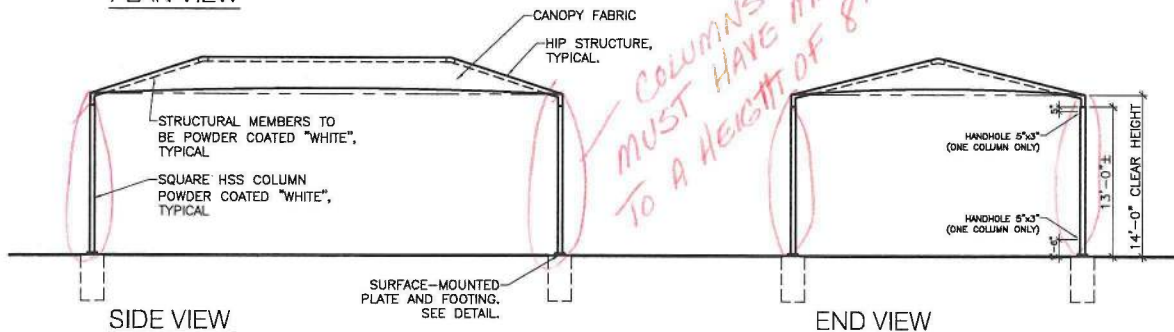
ALL WELDING SHALL CONFORM TO AWS D1.1

FABRIC: USE "KNITTEX®" COLOURSHADE OR FABRIC IN LIKE AND KIND PER LOCAL CANOPY MANUFACTURER. APPROVED COLORS ARE "RAINFOREST" AND "ROYAL BLUE" ("KNITTEX" COLORS). COLOR MUST BE APPROVED BY U-HAUL CONSTRUCTION DEPARTMENT BASED ON FACILITY LOCATION. FABRIC TO BE U.V. STABILIZED HIGH DENSITY POLYETHYLENE, WITH MONOFILAMENT YARN AND TAPE CONSTRUCTION AND LOCK-STITCH KNITTED TO ENSURE MATERIAL WILL NOT TEAR, FRAY OR UNRAVEL IF CUT.

STEEL CABLE: CABLE TO BE 3/8"Ø, 7X19 STRAND CORE GALVANIZED WIRE ROPE WITH A BREAKING STRENGTH VALUE OF 14,000 LBS. GALVANIZED STEEL CABLE CLAMPS. CABLES SHALL BE FED THROUGH THE FABRIC SLEEVES AROUND THE PERIMETER OF THE CANOPY AND TENSIONED UNTIL THE FABRIC PANEL (DESIGNED PURPOSELY UNDERSIZED) REACHES A TAUNT APPEARANCE.



PLAN VIEW

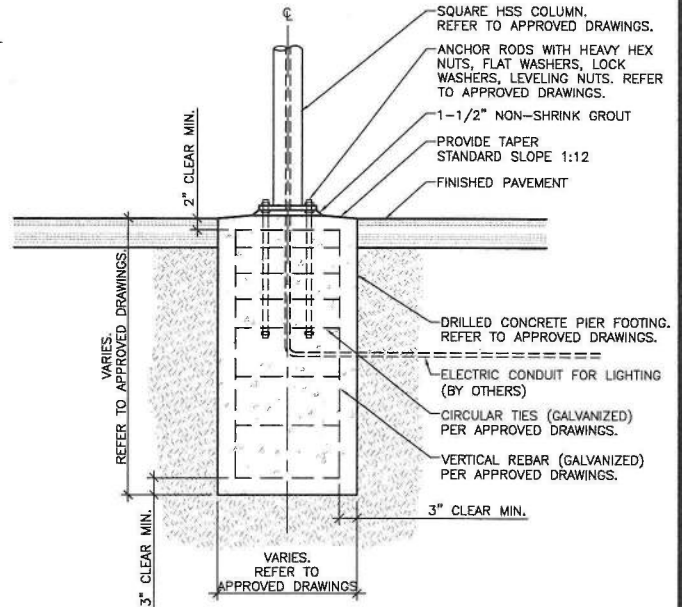


SIDE VIEW

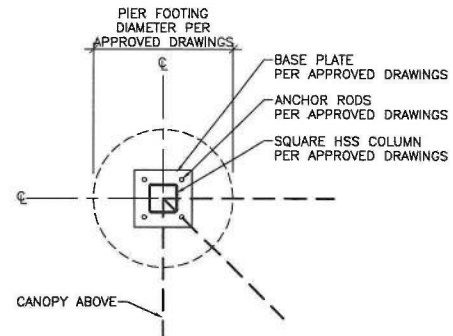
END VIEW

NON-CANTILEVERED FREESTANDING CANOPY

A NON-CANTILEVERED CANOPY IS TYPICALLY USED AT D&R AREAS, OR WHERE ROOF RUN-OFF DOES NOT REQUIRE REDIRECTION.



FOOTING DETAIL - SECTION



FOOTING DETAIL - PLAN VIEW

AMERCO
REAL ESTATE COMPANY

FREESTANDING CANOPY

FILE NAME: Freestanding Canopy.dwg

SECTION #: -

REVISED: 01/08/10

SCALE: N.T.S.

SHEET:

DETAIL

© 2010 AMERCO REAL ESTATE COMPANY

CONSTRUCTION & RENOVATION - 2727 NORTH CENTRAL AVENUE, 9-NORTH - PHOENIX, ARIZONA 85004 PH:(602)263-6502 FAX: (602) 277-1026

