

20 FOOT WIDE PERMANENT EASEMENT  
TEXAS MIDSTREAM GAS SERVICES, L.L.C.  
EASEMENT AGREEMENT RECORDED IN  
DOC. NO. D211164146

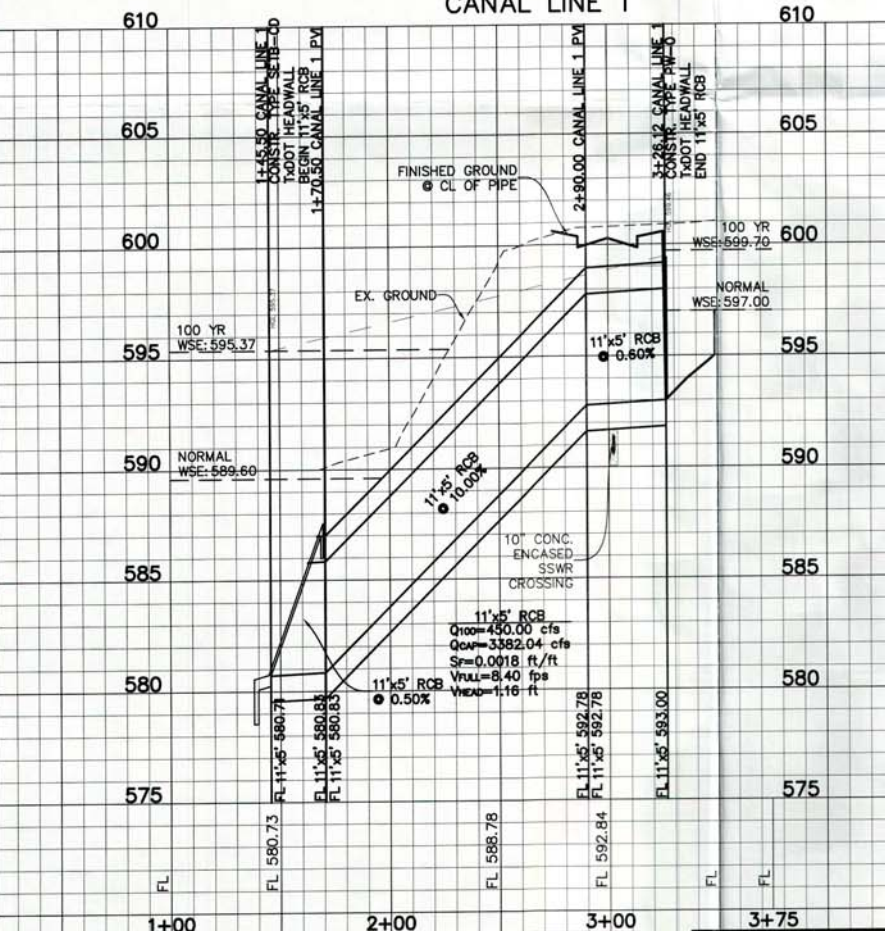
APPROXIMATE LOCATION OF  
100 YEAR FLOODPLAIN BASED  
ON FLOOD INSURANCE MAP  
#48439C0205K, EFFECTIVE  
SEPTEMBER 25, 2009.

1+45.50 CANAL LINE 1  
CONSTR. TYPE SETB-CD  
TxDOT HDWL  
BEGIN 11'x5' RCB

REMOVE AND REPLACE  
250 SQ FT  
CONCRETE, PAVEMENT

CITY OF NORTH RICHLAND HILLS  
SANITARY SEWER EASEMENT  
VOL. 14250, PG. 300

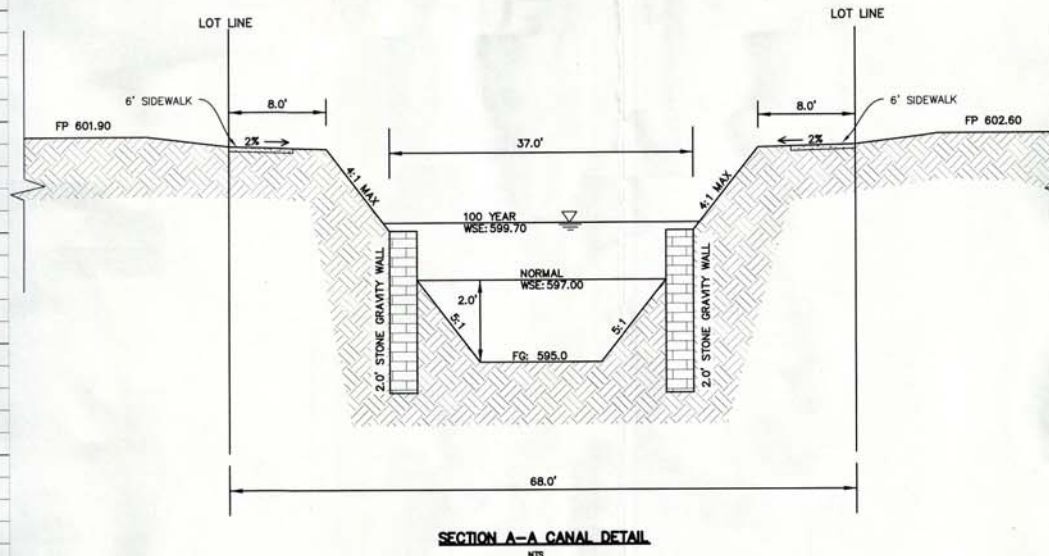
### CANAL LINE 1



#### BENCHMARKS

- SQUARE CUT FOUND IN CENTER OF CURB INLET LOCATED ON THE SOUTH SIDE OF MID-CITIES BOULEVARD APPROXIMATELY 350 FEET WEST OF ICE HOUSE DRIVE. ELEVATION = 606.11
- SQUARE CUT FOUND IN CENTER OF CURB INLET LOCATED ON THE SOUTH SIDE OF ICE HOUSE DRIVE APPROXIMATELY 300 FEET EAST OF BRIDGE STREET. ELEVATION = 614.44
- P.K. NAIL WITH SHINER LOCATED IN CONCRETE TRAIL LOCATED ON THE SOUTH SIDE OF BRIDGE STREET APPROXIMATELY 450 FEET WEST OF PARKER BOULEVARD. ELEVATION = 599.27

NO.	REVISIONS DURING CONSTRUCTION	BY	DATE	NO.	SUBMITTALS	DATE



SECTION A-A CANAL DETAIL  
N.T.S.

This document is released  
for the purpose of interim  
review under the authority of  
Joshua A. Luke, P.E. 103636  
on 12/12/2016. It is not to  
be used for construction or  
permitting purposes.



Texas Registered Engineering Firm F-438

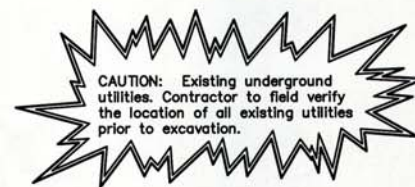
16301 Quorum Drive  
Suite 200 B  
Addison, Texas 75001  
Main 972.248.7676  
Fax 972.248.1414  
www.jbipartners.com

STORM PLAN & PROFILE  
PHASE 5A - CANAL LINE 1 & LINE 2  
THE HOMETOWN CANAL DISTRICT, PHASE 5A & 5B  
City of North Richland Hills, Tarrant County, Texas

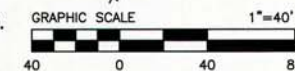
PROJECT NO.  
ARC034  
SHEET NO.  
20

### LEGEND

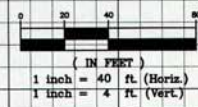
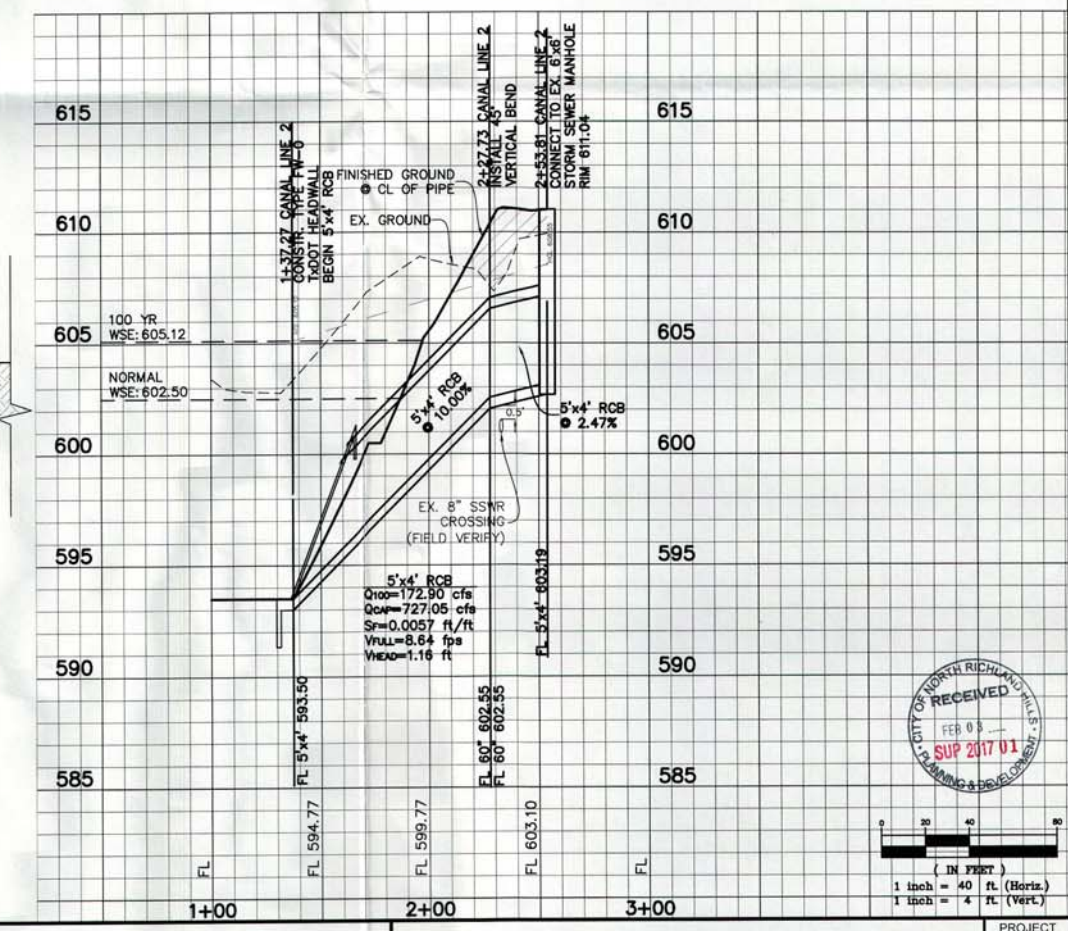
- EX. FIRE HYDRANT
- EX. SANITARY SEWER MANHOLE
- EX. SANITARY SEWER CLEANOUT
- EX. SANITARY SEWER MAIN
- EX. STORM SEWER
- EX. WATER LINE
- PROP. STORM SEWER MANHOLE
- PROP. STORM SEWER
- PROP. SANITARY SEWER MAIN
- PROP. SANITARY SEWER MANHOLE
- PROP. FIRE HYDRANT
- PROP. WATER LINE




NOTE: ALL STORM RCP PIPE TO BE  
CLASS III UNLESS OTHERWISE NOTED.



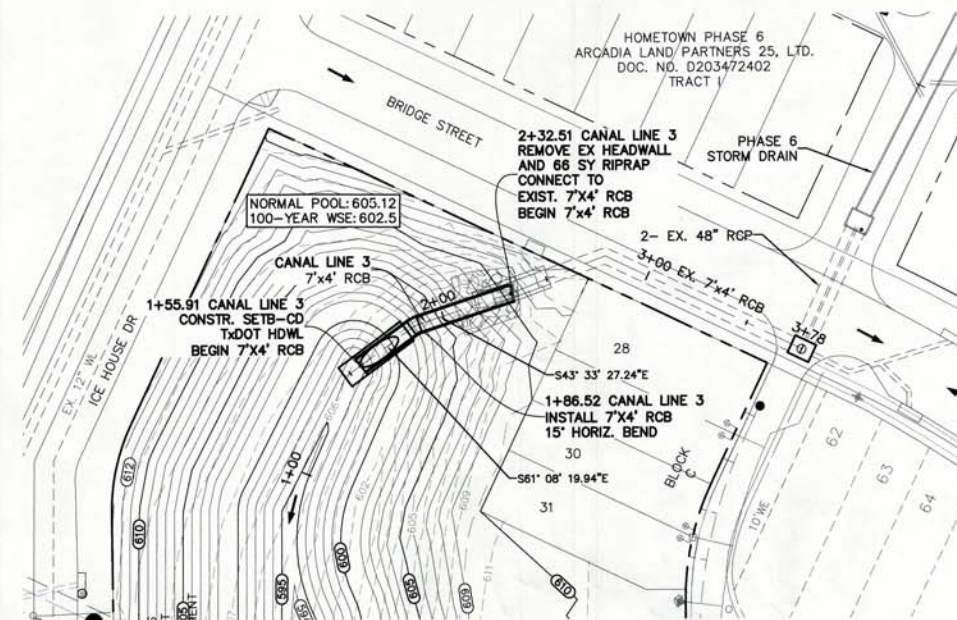
### CANAL LINE 2



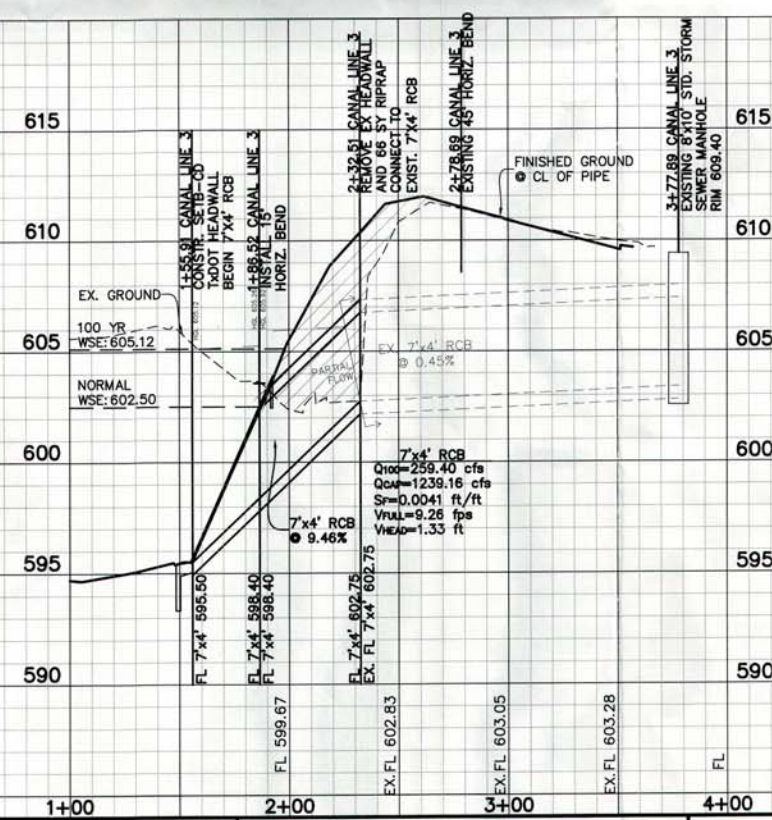




**CAUTION:** Existing underground utilities. Contractor to field verify the location of all existing utilities prior to excavation.



- NOTE: ALL STORM RCP PIPE TO BE  
CLASS III UNLESS OTHERWISE NOTED.



1. SQUARE CUT FOUND IN CENTER OF CURB INLET LOCATED ON THE SOUTH SIDE OF MID-CITIES  
BOULEVARD APPROXIMATELY 350 FEET WEST OF ICE HOUSE DRIVE. ELEVATION = 606.11

2. SQUARE CUT FOUND IN CENTER OF CURB INLET LOCATED ON THE SOUTH SIDE OF ICE HOUSE  
DRIVE APPROXIMATELY 300 FEET EAST OF BRIDGE STREET. ELEVATION = 614.44

3. P.K. NAIL WITH SHINER LOCATED IN CONCRETE TRAIL LOCATED ON THE SOUTH SIDE OF  
BRIDGE STREET APPROXIMATELY 450 FEET WEST OF PARKER BOULEVARD. ELEVATION = 599.27



## STORM PLAN & PROFILE

PHASE 5A - STM B &amp; CANAL LINE 3

THE HOMETOWN CANAL DISTRICT, PHASE 5A & 5B

City of North Richland Hills, Tarrant County, Texas

PROJECT NO.	ARC034
SHEET NO.	22