

20 FOOT WIDE PERMANENT EASEMENT
TEXAS MIDSTREAM GAS SERVICES, L.L.C.
EASEMENT AGREEMENT RECORDED IN
DOC. NO. D211164146

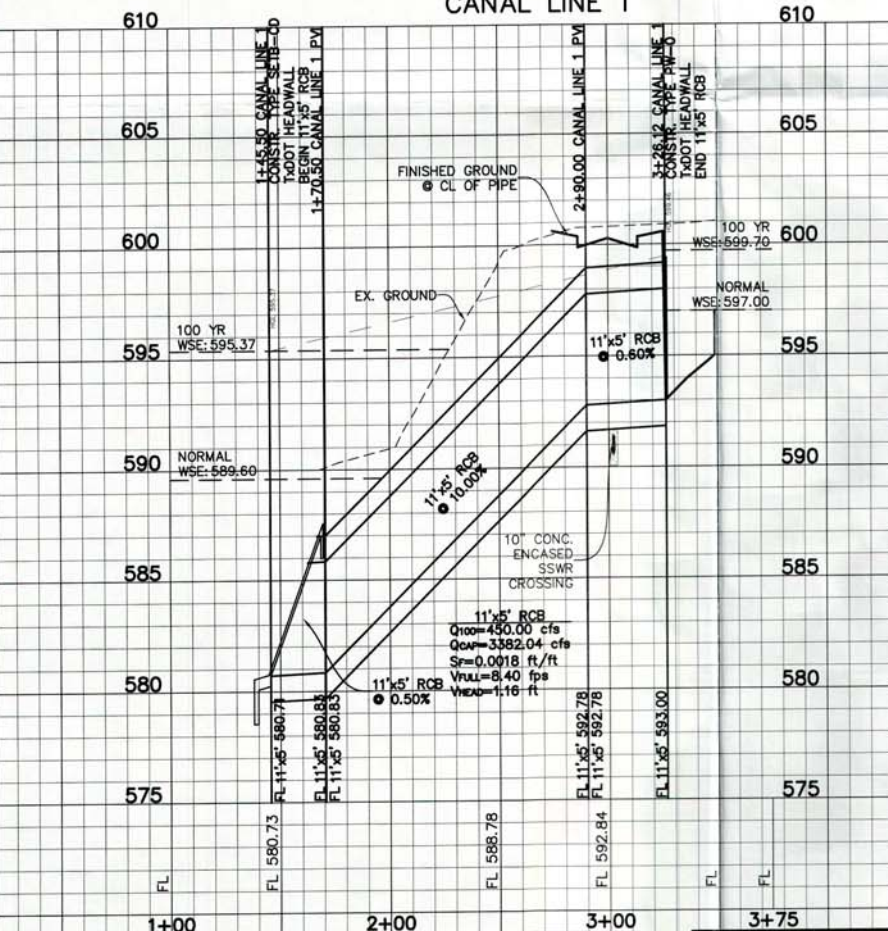
APPROXIMATE LOCATION OF
100 YEAR FLOODPLAIN BASED
ON FLOOD INSURANCE MAP
#48439C0205K, EFFECTIVE
SEPTEMBER 25, 2009.

1+45.50 CANAL LINE 1
CONSTR. TYPE SETB-CD
BEGIN 11'x5' RCB

REMOVE AND REPLACE
250 SQ FT
CONCRETE, PAVEMENT

CITY OF NORTH RICHLAND HILLS
SANITARY SEWER EASEMENT
VOL. 14250, PG. 300

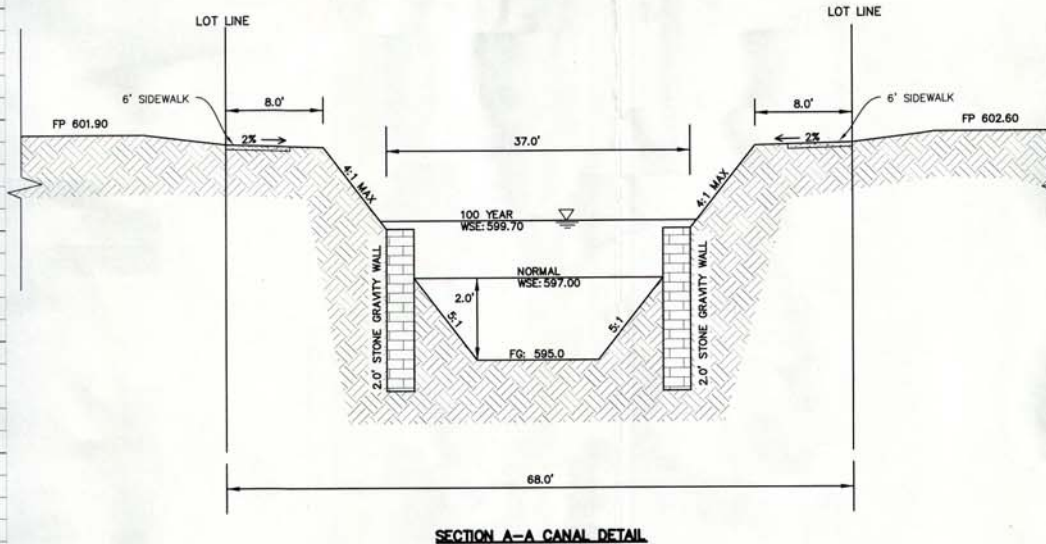
CANAL LINE 1



BENCHMARKS

- SQUARE CUT FOUND IN CENTER OF CURB INLET LOCATED ON THE SOUTH SIDE OF MID-CITIES BOULEVARD APPROXIMATELY 350 FEET WEST OF ICE HOUSE DRIVE. ELEVATION = 606.11
- SQUARE CUT FOUND IN CENTER OF CURB INLET LOCATED ON THE SOUTH SIDE OF ICE HOUSE DRIVE APPROXIMATELY 300 FEET EAST OF BRIDGE STREET. ELEVATION = 614.44
- P.K. NAIL WITH SHINER LOCATED IN CONCRETE TRAIL LOCATED ON THE SOUTH SIDE OF BRIDGE STREET APPROXIMATELY 450 FEET WEST OF PARKER BOULEVARD. ELEVATION = 599.27

NO.	REVISIONS DURING CONSTRUCTION	BY	DATE	NO.	SUBMITTALS	DATE



SECTION A-A CANAL DETAIL

NTS

This document is released
for the purpose of interim
review under the authority of
Joshua A. Luke, P.E. 103636
on 12/12/2016. It is not to
be used for construction or
permitting purposes.



Texas Registered Engineering Firm F-438

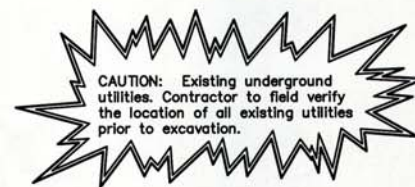
16301 Quorum Drive
Suite 200 B
Addison, Texas 75001
Main 972.248.7676
Fax 972.248.1414
www.jbipartners.com

STORM PLAN & PROFILE
PHASE 5A - CANAL LINE 1 & LINE 2
THE HOMETOWN CANAL DISTRICT, PHASE 5A & 5B
City of North Richland Hills, Tarrant County, Texas

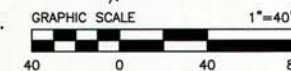
PROJECT NO.
ARC034
SHEET NO.
20

LEGEND

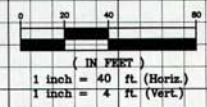
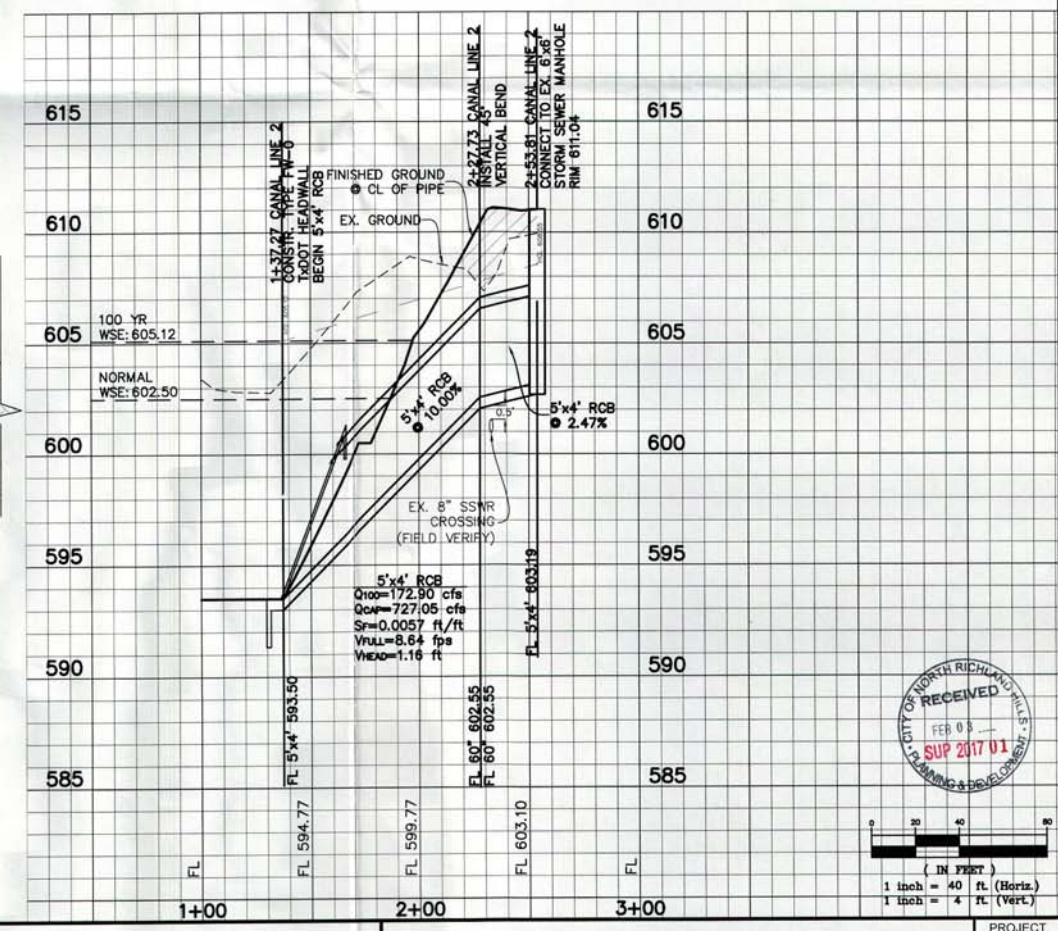
- EX. FIRE HYDRANT
- EX. SANITARY SEWER MANHOLE
- EX. SANITARY SEWER CLEANOUT
- EX. SANITARY SEWER MAIN
- EX. STORM SEWER
- EX. WATER LINE
- PROP. STORM SEWER MANHOLE
- PROP. STORM SEWER
- PROP. SANITARY SEWER MAIN
- PROP. SANITARY SEWER MANHOLE
- PROP. FIRE HYDRANT
- PROP. WATER LINE



NOTE: ALL STORM RCP PIPE TO BE
CLASS III UNLESS OTHERWISE NOTED.



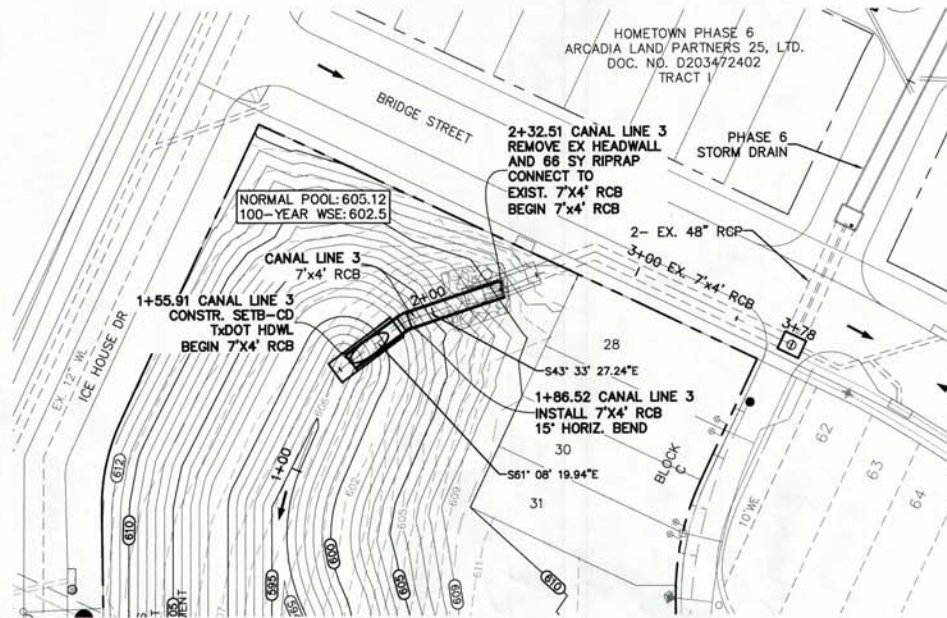
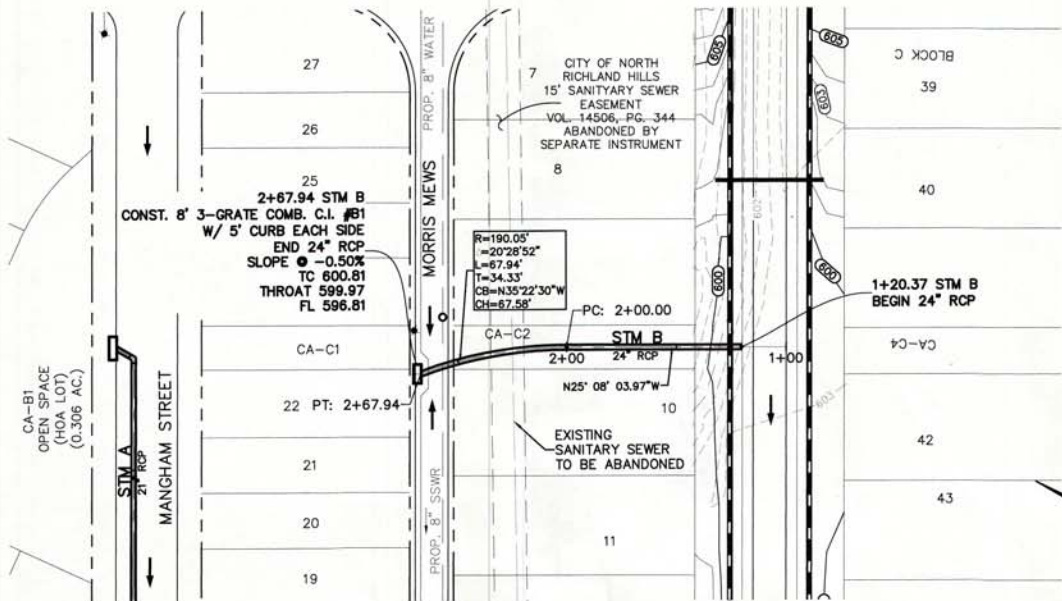
CANAL LINE 2



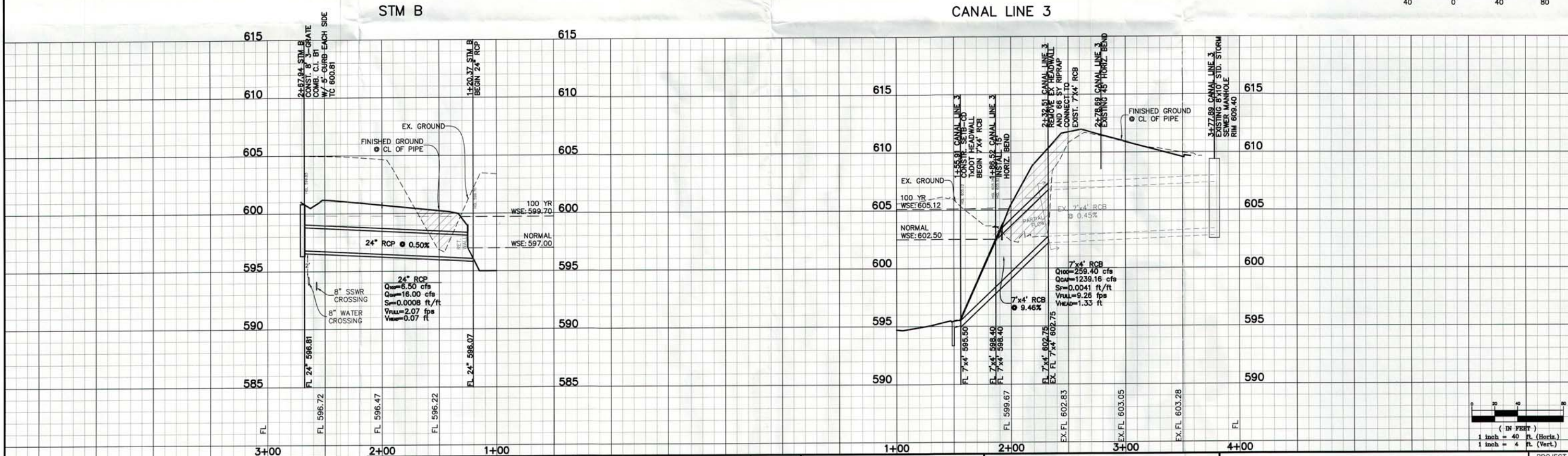
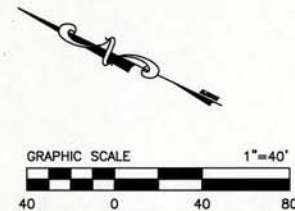
CAUTION: Existing underground utilities. Contractor to field verify the location of all existing utilities prior to excavation.

LEGEND

- EX. FIRE HYDRANT
- EX. SANITARY SEWER MANHOLE
- EX. SANITARY SEWER CLEANOUT
- EX. SANITARY SEWER MAIN
- EX. STORM SEWER
- EX. WATER LINE
- PROP. STORM SEWER MANHOLE
- PROP. STORM SEWER
- PROP. SANITARY SEWER MAIN
- PROP. SANITARY SEWER MANHOLE
- PROP. FIRE HYDRANT
- PROP. WATER LINE



NOTE: ALL STORM RCP PIPE TO BE CLASS III UNLESS OTHERWISE NOTED.



BENCHMARKS

1. SQUARE CUT FOUND IN CENTER OF CURB INLET LOCATED ON THE SOUTH SIDE OF MID-CITIES BOULEVARD APPROXIMATELY 350 FEET WEST OF ICE HOUSE DRIVE. ELEVATION = 606.11

2. SQUARE CUT FOUND IN CENTER OF CURB INLET LOCATED ON THE SOUTH SIDE OF ICE HOUSE DRIVE APPROXIMATELY 300 FEET EAST OF BRIDGE STREET. ELEVATION = 614.44

3. P.K. NAIL WITH SHINER LOCATED IN CONCRETE TRAIL LOCATED ON THE SOUTH SIDE OF BRIDGE STREET APPROXIMATELY 450 FEET WEST OF PARKER BOULEVARD. ELEVATION = 599.27

NO. REVISIONS DURING CONSTRUCTION BY DATE NO. SUBMITTALS DATE

This document is released for the purpose of interim review under the authority of Joshua A. Luke, P.E. 103636 on 12/12/2016. It is not to be used for construction or permitting purposes.

JBI PARTNERS

16301 Quorum Drive Suite 200 B Addison, Texas 75001 Main 972.248.7676 Fax 972.248.1414 www.jbipartners.com

Texas Registered Engineering Firm F-438

STORM PLAN & PROFILE

PHASE 5A - STM B & CANAL LINE 3

THE HOMETOWN CANAL DISTRICT, PHASE 5A & 5B

City of North Richland Hills, Tarrant County, Texas

PROJECT NO. ARC034

SHEET NO. 22

Plotted by: brenshaw Plot Date: 12/12/2016 10:49 AM Drawing: H:\Projects\ARC034.dwg ARC034-ST.dwg Saved By: brenshaw Save Time: 12/12/2016 10:16 AM