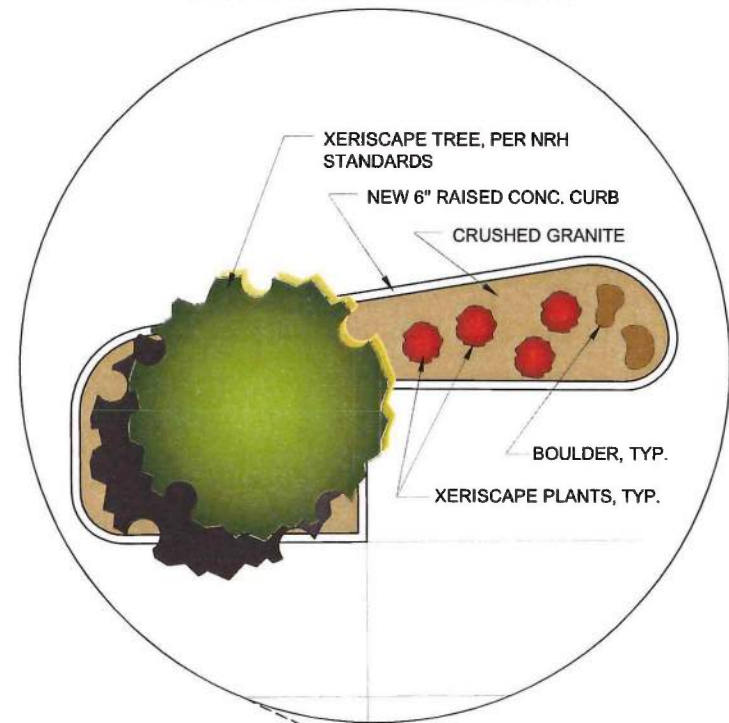


EXAMPLE OF NEW LANDSCAPE ISLAND



NOTES:

1. ALL LANDSCAPED AREAS ARE REQUIRED TO BE IRRIGATED WITH AN AUTOMATIC IRRIGATION SYSTEM IN COMPLIANCE WITH THE CITY OF NRH CODE EQUIPPED WITH RAIN AND FREEZE SENSOR CONTROLS.

PARKING CALCULATIONS

SHOPPING CENTER AREA..... 188,856 SF
REQUIRED PARKING:
(188,856 SF X (1 SPC / 250 SF))..... 756 SPACES
EXISTING PARKING SPACES..... 910 SPACES
PARKING SPACES AFTER
PROPOSED LANDSCAPE ISLANDS..... 892 SPACES

LEGEND

- EXISTING TREE TO REMAIN
- EXISTING ORNAMENTAL TREE TO REMAIN
- EXISTING LANDSCAPE / GRASS AREA.
- EXISTING LIGHT POLE TO REMAIN
- NEW TREE, SPECIES AS ALLOWED BY THE CITY OF NRH
- NEW BOULDER
- NEW XERISCAPE PLANTS, RED YUCCA OR SIMILAR AS ALLOWED BY THE CITY OF NRH
- NEW CONC. CURB, TO MATCH EXISTING

"URBAN DESIGN MONUMENTS"
30" X 30" X 36" TALL, WITH
LEUDERS LIMESTONE, PER CITY OF
NRH STANDARDS, AT 50'-0" O.C.

NEW TREES (SPECIES AS
ALLOWED BY CITY OF
NRH) ALONG FRONTAGE
ROAD AT 50'-0" O.C.

INTERSTATE HIGHWAY LOOP 820 FRONTAGE ROAD

CITY POINT DRIVE

STATE HIGHWAY 26

ONE STORY BUILDING

ONE STORY BUILDING



1

PROPOSED CONCEPT LANDSCAPE PLAN

1" = 120'-0"

COPYRIGHT © CHS ARCHITECTS

CHS ARCHITECTS, INC.
2500 NE GREEN OAKS BLVD., SUITE 200
ARLINGTON, TEXAS 76006
(817) 640-3199



PROJECT NUMBER:
1607370

DATE:
8-24-2016

NORTH HILLS VILLAGE

7520 NE LOOP 820
NORTH RICHLAND HILLS, TX 76180

A1