

Sign A	26 3/4" Jason's Deli
Type:	Single-Face Wall Sign
Illumination:	Internally Illuminated w/ LED's
Square Footage:	54.97
To Grade:	Top of sign to grade = 23'-3" Bottom of sign to grade = 18'-8 1/2"

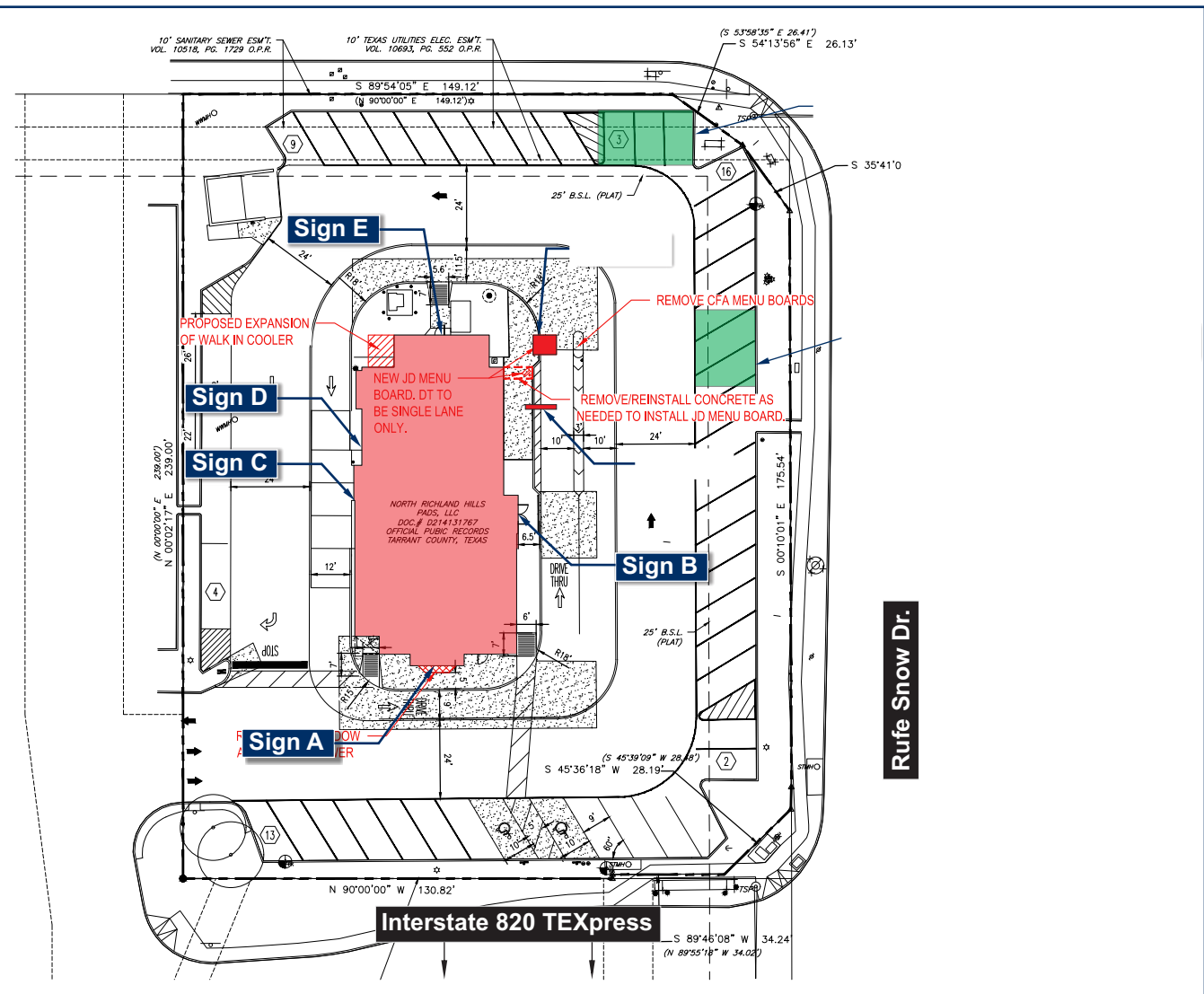
Sign B	22 1/2" Jason's Deli
Type:	Single-Face Wall Sign
Illumination:	Internally Illuminated w/ LED's
Square Footage:	38.47
To Grade:	Top of sign to grade = 18'-11" Bottom of sign to grade = 15'-1 1/2"

Sign C	55 1/2" J's
Type:	Individual Channel Letters
Illumination:	Internally Illuminated w/ LED's
Square Footage:	31.70
To Grade:	Top of sign to grade = 18'-9 1/4" Bottom of sign to grade = 14'-2 1/4"

Sign D	52" Honest 2 Goodness
Type:	S/F Routed aluminum disc
Illumination:	Non-Illuminated
Square Footage:	18.78

Sign E	22 1/2" Jason's Deli
Type:	Single-Face Wall Sign
Illumination:	Internally Illuminated w/ LED's
Square Footage:	38.47
To Grade:	Top of sign to grade = 16'-4 3/4" Bottom of sign to grade = 12'-7 1/4"

WALL SIGNS PROPOSED LOCATIONS



Client: Jason's Deli
Site #: JD-A28286
Address: 5131 Rufe Snow Drive
North Richland Hills, TX 76502

REVISION INFO	11/21/2023	Added Drive-Thru Canopy	KB
	11/27/2023	Updated Facade, Added Note to Front Elevation	KH
	11/27/2023	Updated face material to panaflex for the M/T sign	KB
	11/27/2023	Updated Sign D to routed acrylic disc with applied vinyl	KB
	11/30/2023	Added Sign F (Clearance Pole)	KH
	12/07/2023	Updated Sign D with new mural design	KB
	12/11/2023	Updated clearance sign, drive-thru canopy, and the pylon to include engineering	KB

This rendering is the property of Anchor Sign, Inc. It is for the exclusive use of Anchor Sign, Inc. and the party which requested the rendering. It is an unpublished original drawing not to be distributed, reproduced or exhibited without the consent of Anchor Sign, Inc. Please contact your account manager with questions regarding this statement.