



4200 Irving Blvd
Dallas, TX 75247
214-905-9212

Customer Proposal Letter

Thank you for trusting us with your business. Please review the proposal below, and if you approve, sign and return to us at your convenience. We look forward to working with you and will continue to do our best to earn your trust now and in the future.

Year	2024	Make	Hino	Model	L7	Stock #	TBD	Serial #	TBD
------	------	------	------	-------	----	---------	-----	----------	-----

Additional Vehicle Details: Upfit WITH 6/8 YD Dump according to customer previous spec. Includes Wheelbase to fit dump body and installation of trailer tractor package. Extended Warranty on chassis for 7yrs/300k Miles, Extended Engine & Aftertreatment coverage for 6yr/250k Miles. Price plus TTL if applicable, FOB Dallas TX.

Quantity		Total
Truck Price per Unit	\$ 164,956.00	\$ 164,956.00
F.E.T. (Factory & Dealer Paid)	\$ 0.00	
Net Sales Price	\$ 164,956.00	\$ 164,956.00
Optional Extended Warranty(ies)		
State Sales Tax		
Vehicle Inventory Tax	\$ 357.13	\$ 357.13
Documentary Fee	\$ 250.00	\$ 250.00
Total Sales Price	\$ 165,563.13	\$ 165,563.13
Trade Allowance (see DISCLAIMER Below)		
Deposit / Down Payment		
Unpaid Balance Due on Delivery	\$ 165,563.13	\$ 165,563.13

Sales Representative

Daniel Anguiano Jr.
Signature

Daniel Anguiano

1.10.23

Printed Name _____

Date _____

Purchaser



Printed Name / Title

Date _____

Accepted by Sales Manager
or General Manager

Signature _____

Printed Name _____

Date _____

Quote good until 1/26/2023

Note: The above Customer Proposal is a quotation only. Sale terms subject to approval of Sales Manager of Dealer.

DISCLAIMER: Any order based on this Proposal is subject to Customer executing Dealer's standard form Retail Sales Order and other required documents incorporating the above terms. Any documentary fees, FET, state tax, title, registration and license fees subject to adjustment and change. This Proposal is based upon Dealer's current and expected inventory, which is subject to change. Dealer is not obligated to retain any specific vehicles in stock, nor maintain specific inventory levels. Dealer shall not be obligated to fulfill Proposal in event quoted vehicle(s) is not in stock or available within requested delivery schedule. Manufacturer has reserved the right to change the price to Dealer of any vehicle not currently in Dealer's stock, without notice to Dealer and Dealer reserves the right to change Quotation Total to reflect any price increases from Manufacturer. Dealer shall not be liable for any delay in providing or inability to provide Quoted Vehicle(s). Above listed Trade Value based upon current appraisal of Trade Vehicle(s). Dealer may adjust Trade Value of Trade Vehicle(s) to reflect changes in condition and/or mileage of Trade Vehicle(s) between date of current appraisal and acceptance of the Trade Vehicle by Customer.

⁽¹⁾ Includes subscription period for # of specified months. ⁽²⁾ Customer's use of RushCare Service is governed by the RushCare User Agreement located at <https://www.rushtruckcenters.com/rushcare-user-agreement>. ⁽³⁾ Customer's use of Telematics Services is governed by separate 3rd party license terms and Rush is not liable for the Telematics Service. ⁽⁴⁾ Gap Coverage is provided and administered by an independent 3rd party provider under a separate contract directly between Customer and the 3rd party provider.



POWERON.



CONVENTIONAL, CAB-OVER, HYBRID, AWARD WINNING.

Prepared By: Daniel Anguiano 214 9059212 X101
anguianod@rushenterprises.com

Prepared For: City of North Richland Hills

RUSH - DALLAS
RUSH TRUCK CENTER, DALLAS
4200 IRVING BLVD
DALLAS, TX 75247

Monday, January 9, 2023 11:11:49 PM GMT



Prepared For City of North Richland Hills
 Dealership RUSH - DALLAS
 Prepared By Daniel Anguiano
 Quote Name NRH L7 Crew Cab Dump
 Quote Id 5A95D9E1

Factory Options

S/O	Option	Subcategory	Description	Qty.
Series				
S	9003-006	Model Year and Price List	24.1 MY Price List	1
S	0050-003	Series	L Series	1
Base Model				
O	0100-006	Base Model	L7	1
O	0100C-006	Major Model	L7	1
S	0102-005	Model Year	2024 Model Year	1
S	0103-001	Axle Configuration	4X2 Axle Configuration	1
Vocation				
O	0512-002	Application	Straight Truck-Vocational	1
O	0515-005	Vocation	Dump Body	1
O	0536-005	Cab Type	Galvanized Steel Reinforced Crew Cab	1
O	0530-028	Weight Rating Vehicle	33,000 Lbs.	1
O	0533-011	Weight Rating Combination	49,000 Lbs.	1
O	0524-002	Weight Rating Front	Front 13,200 Lbs.	1
O	0527-003	Weight Rating Rear	Rear 23,000 Lbs.	1
Frame & Wheelbase				
O	2000-253	Wheelbase	253.00 In. Wheelbase	1
O	2001-1408	Useable Cab To Axle/Trunnion Dimension	140.8 In. Cab To Axle/Trunnion Dimension	1
S	2015-097	Frame Rear Overhang	97.00 In.	1
O	2021-013	Front Bumper	Single Piece Custom Color Painted Steel	1
S	2048-007	Front Tow Hook	LH And RH Frame Mounted Front Tow Hooks	1



Prepared For City of North Richland Hills
 Dealership RUSH - DALLAS
 Prepared By Daniel Anguiano
 Quote Name NRH L7 Crew Cab Dump
 Quote Id 5A95D9E1

S/O	Option	Subcategory	Description	Qty.
O	2003-020	Frame Rail	Single Frame .37X10.3X3.1 In., 120Kpsi (RBM 1,933,200/Rail)	1
S	2024-001	Battery Box	Integrated In Drivers Side Step	1
S	0521-001	Chassis Type	Clean Chassis Frame	1

Engine

O	2750-016	Engine	Cummins B6.7, 6.7 Liter, 260HP, 660 Ft/Lbs.Torque	1
S	2792-001	Turbocharger	VGT Turbocharger	1
S	2759-005	Engine Starter	Starter Delco Remy 31MT (12 V-4.8KW)	1
O	2762-002	Alternator	Delco Remy 35 Si Brushless (12V-135A)	1
S	2768-002	Power Steering Pump	Power Steering Pump	1
S	2771-002	Engine Oil Type	Shell Oil	1
S	2774-001	Oil Filter	Oil Filter	1
S	2780-001	Engine Drain Plug	Non-Magnetic Engine Oil Drain Plug	1
S	2801-002	Engine Air Compressor	Gear Driven Engine Air Compressor	1
S	2804-001	Air Dryer	Bendix AD-IS Air Dryer	1
S	2807-001	Intake Air Warmer	Intake Air Warmer	1
S	2810-001	Intake Air Filter	Donaldson Intake Air Filter and Service Indicator	1
S	2813-001	Cold Package	Engine Block Heater With Cable and Cover	1
O	2831-002	Engine Temperature Shutdown	Automatic Engine Temperature Shutdown	1

Cooling System

S	3100-004	Engine Cooling System	Engine Cooling System And Intercooler	1
S	3103-003	Cooling System Hose Clamps	Band Type Hose Clamp	1
S	3106-002	Engine Coolant	Engine Coolant	1
S	3115-003	Engine Fan	Engine Cooling Fan	1
S	3118-003	Fan Clutch	Electronically Controlled Engine Fan Drive	1

Exhaust

S	3500-003	Exhaust System Regulation	Cummins EPA 2021 GHG Phase 2 Regulation Exhaust DPR-SCR	1
---	----------	---------------------------	---------------------------------------------------------	---



Prepared For City of North Richland Hills
 Dealership RUSH - DALLAS
 Prepared By Daniel Anguiano
 Quote Name NRH L7 Crew Cab Dump
 Quote Id 5A95D9E1

S/O	Option	Subcategory	Description	Qty.
S	3503-007	Exhaust System	Cummins Inline DOC, DPF and SCR Beneath Cab RH Horizontal Tailpipe	1
S	3506-003	Exhaust Brake	Cummins VGT Exhaust Brake	1
S	3509-006	DEF Tank	Heated DEF Tank 7.4 Gallon Frame Mounted Forward of Passenger Steps	1
S	3512-001	DEF Tank Cap	DEF Tank Cap	1

Transmission

S	3753-002	Transmission Shift Type	Automatic Shift	1
O	3750-001	Transmission	Allison 3000 RDS Automatic Transmission With PTO Provision	1
S	3765-002	Transmission Shift Selector	Push Button Electronic Shift Selector - Dash Mounted	1
O	3756-008	PTO Port Location	Both 4 And 8 O'clock - RH Blocked	1
S	3762-006	Allison FuelSense®	GHG-21 Allison Neutral At Stop	1
O	3763-223	Allison Vocational Package	Allison Vocational Package Number 223	1
O	3767-002	Transmission Fluid	Synthetic Transmission Fluid - Automatic Transmission	1
S	3768-004	Transmission Oil Cooler	Transmission Oil Cooler- Separate Type	1

Driveline

O	4000-007	Drive Shaft	Dana Spicer SPL 140 Main Driveline With Half Round Yokes	1
---	----------	-------------	-------------------------------------------------------------	---

Suspension - Front

O	4500-012	Front Suspension	14K Lbs. Tapered Leaf	1
S	4503-001	Front Suspension Shock Absorber	Shock Absorber	1

Front Axle

O	4300-012	Front Axle	Meritor MFS14 14k Lbs. Front Axle	1
S	4306-001	Front Axle Lubrication	Synthetic Front Axle Lubrication	1
S	4312-002	Front Axle Hub Bearing	Front Axle Hub Bearing- Torque Type	1
O	4318-004	Power Steering Reservoir	2.44 Qt. Power Steering Reservoir	1
S	4324-003	Steering Gear	Single ZF TRW TAS 85 Steering Gear	1



Prepared For City of North Richland Hills
 Dealership RUSH - DALLAS
 Prepared By Daniel Anguiano
 Quote Name NRH L7 Crew Cab Dump
 Quote Id 5A95D9E1

S/O	Option	Subcategory	Description	Qty.
Suspension - Rear				
O	5100-030	Rear Suspension	Hendrickson Comfort Air 23K Lbs. Air Suspension-Severe Duty	1
O	5103-002	Rear Suspension Shock Absorber	Shock Absorber	1
O	5115-001	Rear Height Control Valve	Single Rear Height Control Valve	1
Rear Axle				
O	4750-019	Rear Axle	Meritor RS25-160 25K Lbs. Rear Axle	1
O	8551-002	Differential Lock And Controls	Driver Controlled Rear Differential Lock	1
S	4759-001	Rear Axle Lubrication	Conventional Rear Differential Gear Lubricant	1
O	4762-045	Rear Axle Ratio	5.63 Rear Axle Ratio	1
Brakes				
O	5500-011	ABS And Safety Systems	Wabco 4S/4M ABS Without Automatic Traction Control System	1
O	5528-001	Service Brake System Type	Air Brake	1
O	5503-010	Front Axle Brake Type	Air Meritor 16.5X5 Conventional Drum	1
O	5506-005	Front Axle Brake Chambers	Type 20 MGM Service Chambers	1
O	5513-002	Front Axle Slack Adjusters	5.50 Inch Bendix Slack Adjusters	1
O	5509-011	Rear Axle Brake Type	Air Meritor Conventional Drum 16.5X7	1
O	5512-006	Rear Axle Brake Chambers	Type 30/30 Wabco DDSB Chambers	1
O	5514-002	Rear Slack Adjusters	6.00 Inch Bendix Slack Adjusters	1
S	5530-001	Service Brakes Circuit	Service Brakes Circuit - Straight Truck	1
O	5533-002	Parking-And Emergency Brake	Parking and Emergency Brake 4X2 Straight Truck	1
O	5539-003	Air Reservoirs	Dual 9 Gallon Steel Air Tanks	1
S	5545-002	Air Reservoir Drain Valves	Petcock Valve On All Tanks	1
Electrical				
S	6000-003	Battery	(2) Exide Group 31 Batteries (600 CCA X 2)	1
S	6003-001	Chassis Wiring	Chassis Wiring	1



Prepared For City of North Richland Hills
 Dealership RUSH - DALLAS
 Prepared By Daniel Anguiano
 Quote Name NRH L7 Crew Cab Dump
 Quote Id 5A95D9E1

S/O	Option	Subcategory	Description	Qty.
O	6006-002	Battery Disconnect/Jump Studs	Battery Disconnect Switch And Jump Studs Located On Battery Box	1
S	6009-004	Cruise Control	Cruise Control Without Adaptive Cruise Control	1
O	6015-001	Headlights	LED Headlights	1
S	6030-001	Clearance And Identification Lights	Clearance And Identification Lights	1
S	6033-001	Stop/Turn/Tail And Back Up Lights	Combination Type Stop/Turn/Tail/Back-Up Lights	1
S	6042-002	Reverse Lamp	Reverse Lamp - Straight Truck	1
S	7396-003	License Plate Bracket	License Plate Bracket Lamp	1
O	6045-001	Back Up Alarm	Back Up Alarm	1

Fuel System

O	6500-007	Fuel Tank	Rectangular 70 Gallon Aluminum Fuel Tank Driver's Side	1
S	6506-001	Fuel Tank Cap	Non Locking Fuel Tank Cap	1
S	6510-003	Fuel Water Separator Promotion	Fuel Water Separator - 24MY Promotion	1
S	6509-003	Fuel Water Separator	Davco Fuel Pro® 245 Fuel Water Separator With Electric Pre-Heater	1

Wheels And Tires

O	6703-013	Front Tire	Bridgestone Rib 11R22.5 R250HZ H-Load Range - 16	2
S	6709-001	Front Wheel	22.5x8.25 White Powdered Coated Steel Accuride	2
O	6715-018	Rear Tire	Bridgestone Lug 11R22.5 M770Z H-Load Range - 16	4
S	6721-003	Rear Wheel	22.5x8.25 White Powder Coated Steel/White Powder Coated Steel Accuride	4
S	6731-001	Valve Caps	Nickel-Plated Brass Valve Caps	1

Cab Exterior

S	7300-002	Exterior Cab Accessories	Paint Protection Tape	1
O	7312-003	Front Air Spoiler	Black Front Air Spoiler - Under Bumper	1



Prepared For City of North Richland Hills
 Dealership RUSH - DALLAS
 Prepared By Daniel Anguiano
 Quote Name NRH L7 Crew Cab Dump
 Quote Id 5A95D9E1

S/O	Option	Subcategory	Description	Qty.
O	7324-007	Exterior Grab Handle	Driver's And Passenger Side Exterior Entry Grab Handle -Front and Rear	1
S	7333-001	Hood	Single Piece Polyester And Glass Sheet Molded	1
S	7339-001	Grille	Grille Chrome Plated Plastic Horizontal Bar	1
S	7357-001	Hood Tilt and Latch	Hood Tilt Assist And Latch	1
S	7336-001	Fender Mounted Turn Lamp	Front Fender Mounted Turn Lamp	1
S	1527-001	Cab Suspension	Cab Suspension Mounting - Rubber	1
S	7342-001	Windshield	Laminated Windshield	1
S	7345-001	Windshield Wipers	Intermittent Windshield Wipers	1
S	7348-002	Windshield Washer Fluid Reservoir	Washer Fluid Reservoir	1
S	7354-001	Rear Window	Rear Window	1
O	7369-002	Primary Side View Mirrors	Remote Black Primary Side View Mirror Upper Flat Lower Convex, Heat, Lit	1
S	7372-001	Mirror Stay	Black Primary Side View Mirror Stay-Fixed	1
O	7378-002	Door Look Down Mirror	Convex Passenger Door Mounted Look Down Mirror	1

Cab Interior

S	8200-002	Interior Cab Trim	Full Interior Cab Trim With Lower Rear Trim	1
S	8205-001	Center Dash Panel	Center Dash Switch Panel	1
S	8212-001	Overhead Storage	Overhead Storage Driver And Passenger Side	1
S	7351-001	Sun Visors	Driver and Passenger Interior Sun Visors	1
S	8224-001	Floor Mat	Vinyl Floor Mat And Heat/Noise Insulation	1
O	8320-009	Door Locks and Window Controls	Power Door Locks and Power Window Control-Front and Rear	1
S	8323-001	Interior Door Handle	Interior Door Handles-Black	1
O	8326-002	Exterior Door	Four Exterior Cab Doors	1
O	8245-002	Horn	Electric And Air Horn	1
S	8254-002	Entertainment System	Denso Ten Radio CD,FM,AM,Bluetooth, Clarion Antenna	1



Prepared For City of North Richland Hills
 Dealership RUSH - DALLAS
 Prepared By Daniel Anguiano
 Quote Name NRH L7 Crew Cab Dump
 Quote Id 5A95D9E1

S/O	Option	Subcategory	Description	Qty.
S	8257-001	Speakers	Denso Ten 10 Watt Speakers - Driver And Passenger	1
S	8239-001	Steering Wheel	Steering Wheel	1
S	8248-001	Cup Holders	Dash Mount Medium Cup Holder	1
S	8242-001	Steering Column	Steering Column With Tilt And Lock	1
S	8260-002	Cigarette Lighter	Center Mount 12V/120W Accessory Receptacle	1
S	8263-001	USB Charging Port	Dash Mounted 2.1 Amp USB Charging Port	1
S	8269-001	Cab Heater And Air Conditioning Controls	Heater And Air Conditioning Controls	1
S	8275-001	Cab Air Inlet Filter	Cab Air Inlet Filter	1
S	8281-001	Cab Heater	Cab Heater	1
O	8284-002	Rear Air Conditioner	Rear Air Conditioning	1
O	8287-004	Cab Rear Heater	Rear Heater	1
S	8296-001	Drivers Seat	National 4 Way Adjustable High Back Vinyl Air Suspension RH Arm Rest	1
S	8299-004	Passenger Seat	CVG 2/3 Width Vinyl Two Man Bench	1
O	8302-004	Rear Seat	Vinyl Rear Bench Seat	1
O	8312-004	Rear Seat Belts	3-Point Seat Belt Gray, Center 3-Point Gray	1
S	8311-002	Front Seat Belts	Driver And Passenger 3-Point Seat Belt Black, Center Black	1
S	8314-002	Seat Belt Warning	Seat Belt Warning - Driver's Seat	1
O	8227-005	Interior Dome Lamp	Interior Dome Lamps Crew Cab	1
S	8329-001	Number Of Keys	Two Keys	1
O	8335-002	Interior Grab Handle	Interior Grab Handles 26 In. A Pillar RH/LH And 14 In. B Pillar RH/LH-Front/Rear	1
O	8347-005	Window Controls	Window Control-Power Front and Rear	1
O	8368-002	Fire Extinguisher	2.5 Lb. Fire Extinguisher	1
O	8371-002	Safety Triangle	Safety Triangles	1

Cab air ride?

Instruments And Controls

S	8500-001	Instrument Cluster	Electronic Instrument Cluster	1
---	----------	--------------------	-------------------------------	---



Prepared For City of North Richland Hills
 Dealership RUSH - DALLAS
 Prepared By Daniel Anguiano
 Quote Name NRH L7 Crew Cab Dump
 Quote Id 5A95D9E1

S/O	Option	Subcategory	Description	Qty.
S	8533-001	Hour Meter	Hour Meter	1
S	8536-001	Parking Brake Warning Alarm	Parking Brake Warning Lamp	1
S	8539-001	Coolant Level Warning Alarm	Coolant Level Warning	1
O	8545-002	Trailer Hand Brake	Trailer Control Hand Valve - Straight Truck	1

Paint

S	8900-001	Paint	Single Paint Color - Existing Solid Paint Color	1
O	8903-136	Primary Cab Paint Color	Imron Gray (L0429EW)	1
S	8904-000	Secondary Paint Color	Secondary Paint Color Match Primary Cab Paint Color	1
O	8907-216	Bumper Color	Imron Solid Gray (L3483)	1
O	8905-002	Paint Process	Axalta EW Quality Automotive Paint- Dual Stage	1
S	8909-001	Chassis Paint	Powder Coat - No Chassis Paint	1

Sales Administration

O	9050-84224	Dealership	RUSH - DALLAS - 84224	0
S	9022-002	Freight	L Series Freight Charge	1
S	9008-001	Cummins Material Surcharge	Cummins B6.7 Material Surcharge	1
S	9009-001	Owner's Manual	Owners Manual	1
S	9011-001	Price Protection	No Price Protection	1
S	9026-009	Freight and Material Surcharge	Material and Freight Surcharge	1
S	9010-001	Hino Freight Surcharge	No Hino Freight Surcharge	1

Warranty And Additional Services

S	9900-001	Chassis Warranty	Base Chassis Warranty - 2 Years / Unlimited Mileage	1
O	9920-069	Hino Max Extended Chassis Warranty	Hino Max Coverage Platinum - 7Yr / 300,000 Miles	1
O	9901-031	Engine Warranty - Extended Warranty Prices Subject To Change At Time Of DTU.	Base Plus Extended Engine Warranty B6.7 - Plan 1 - 6 Years/250,000 Miles	1
S	2500-001	Emissions Warranty Type	Non-CARB State Emissions Warranty	1



Prepared For City of North Richland Hills
 Dealership RUSH - DALLAS
 Prepared By Daniel Anguiano
 Quote Name NRH L7 Crew Cab Dump
 Quote Id 5A95D9E1

S/O	Option	Subcategory	Description	Qty.
S	9903-001	Emissions System Warranty	EPA Emissions System Warranty - 5 Years / 100,000 Miles	1
O	9902-033	Aftertreatment Warranty - Extended Warranty Prices Subject To Change At Time Of DTU.	Base Plus Extended Aftertreatment System Warranty B6.7- Plan 1 - 6 Years/250,000	1
S	9905-002	Cab Warranty	Cab Warranty - 5 Years / Unlimited Mileage	1
S	9906-001	Transmission Warranty	Allison RDS Transmission Warranty - 5 Years / Unlimited Mileage	1
S	9904-002	Frame Rail and Crossmember Warranty	Frame Rails and Crossmember Warranty - 5 Years / Unlimited Mileage	1
S	9915-002	HinoWatch Roadside Assistance Program	HinoWatch Roadside Assistance Program - 3 Years	1
S	6082-004	Hino Telematics	Hino Edge Connected Vehicle- 5 Year Subscription	1



Prepared For City of North Richland Hills
Dealership RUSH - DALLAS
Prepared By Daniel Anguiano
Quote Name NRH L7 Crew Cab Dump
Quote Id 5A95D9E1

Performance

Requirements	
Top Speed Gradeability	1.5 %
Cruise Speed	65 MPH
Lowest Gear Startability	15 %
First Highway Gear Startability	12 %
Body Weight	0 lb
Body Length	0 ft
Body to Back of Cab	5 in

70 ?



Prepared For City of North Richland Hills
 Dealership RUSH - DALLAS
 Prepared By Daniel Anguiano
 Quote Name NRH L7 Crew Cab Dump
 Quote Id 5A95D9E1

Gradeability

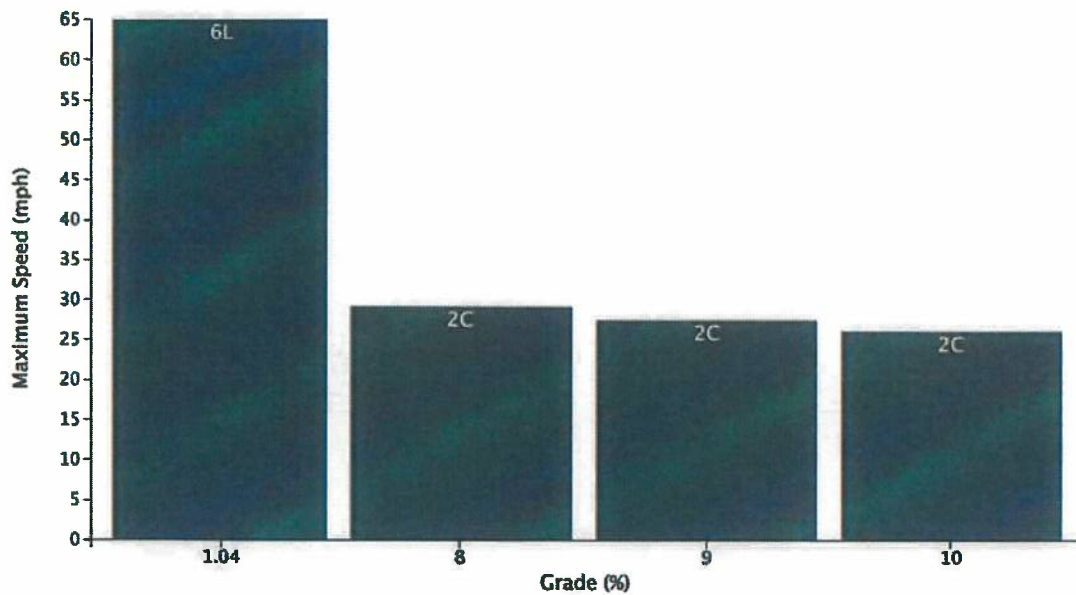
Launch Gradeability

32.24%

Low Speed Gradeability

22.44%

@14.61 MPH, 80% conv. eff. grade

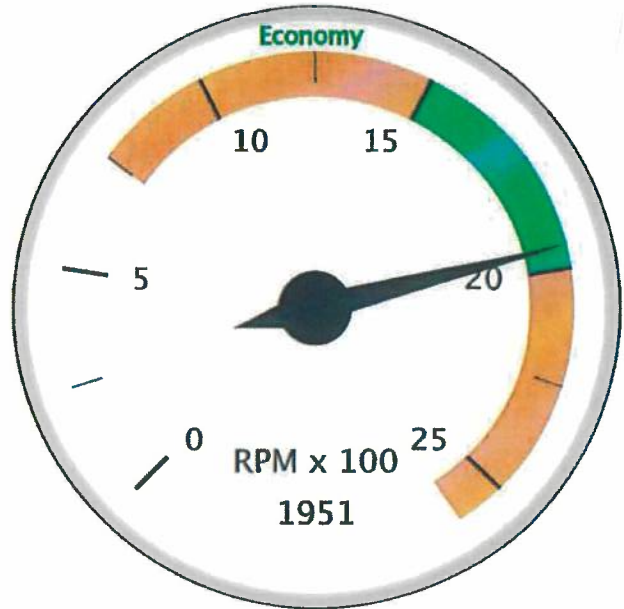
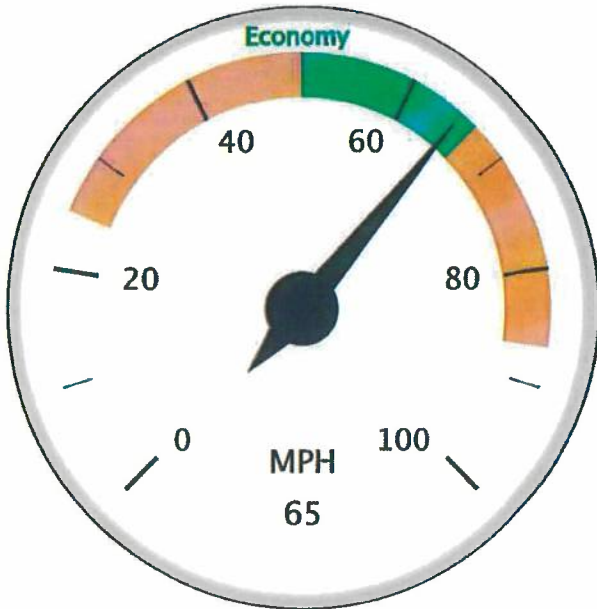


Maximum Grade (%)	Top Speed (MPH)	Gear
1.04	65 Customer Requested Operating Speed	6L
8	29.14	2C
9	27.45	2C
10	26.06	2C



Prepared For City of North Richland Hills
 Dealership RUSH - DALLAS
 Prepared By Daniel Anguiano
 Quote Name NRH L7 Crew Cab Dump
 Quote Id 5A95D9E1

Top Speed

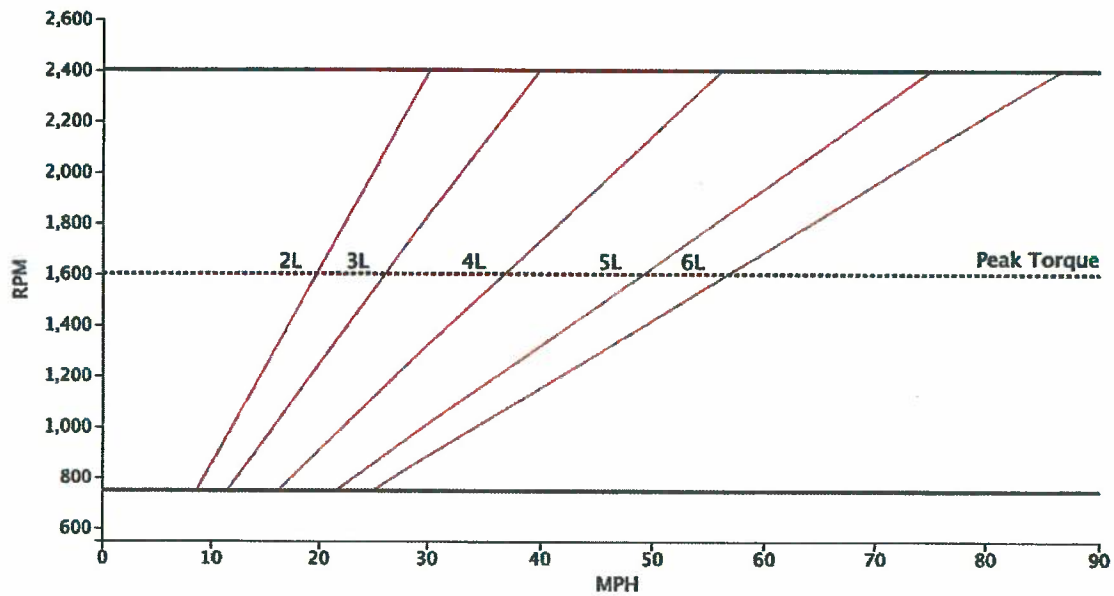


Top Speed	80 MPH
Cruise Speed	65 MPH
Minimum of Operating Range	25 MPH
Maximum of Operating Range	86.6 MPH
Minimum of Economy Range	50 MPH
Maximum of Economy Range	66.6 MPH



Prepared For City of North Richland Hills
 Dealership RUSH - DALLAS
 Prepared By Daniel Anguiano
 Quote Name NRH L7 Crew Cab Dump
 Quote Id 5A95D9E1

Operating Range

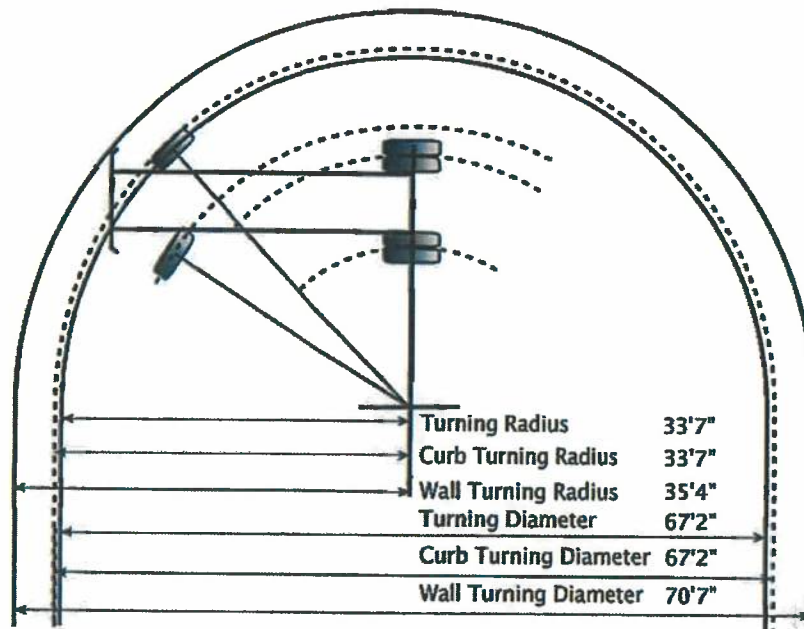


Gear	Min MPH	Max MPH	Cruise RPM	Rear Axle Ratio	Transmission Ratio
2L	8.73	30.28	5581.47	5.63	1.86
3L	11.52	39.94	4231.11	5.63	1.41
4L	16.25	56.32	3000.79	5.63	1.0
5L	21.66	75.09	2250.59	5.63	0.75
6L	24.99	86.64	1950.51	5.63	0.65



Prepared For City of North Richland Hills
 Dealership RUSH - DALLAS
 Prepared By Daniel Anguiano
 Quote Name NRH L7 Crew Cab Dump
 Quote Id 5A95D9E1

Turning Radius

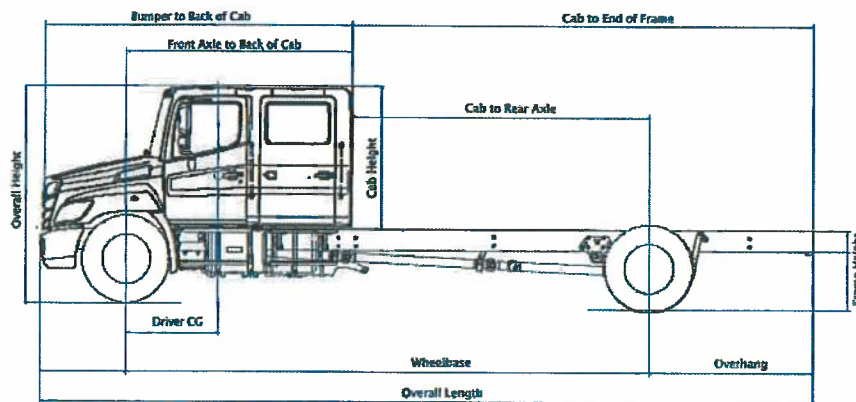


Turning Radius	33'7"
Turning Diameter	67'2"
Curb to Curb Turning Radius	33'7"
Curb to Curb Turning Diameter	67'2"
Wall to Wall Turning Radius	35'4"
Wall to Wall Turning Diameter	70'7"



Prepared For City of North Richland Hills
 Dealership RUSH - DALLAS
 Prepared By Daniel Anguiano
 Quote Name NRH L7 Crew Cab Dump
 Quote Id 5A95D9E1

Chassis Weight Distribution



	Front Axle	Rear Axle	Total Weight
Chassis (Factory Options)	7,998.8	4,897.8	12,896.6
Local Options	0	0	0
Body Options	0	0	0
Dealer Options	0	0	0
Body (From Requirements)	0	0	0
Payload	0	0	0
Total Load	7,998.8	4,897.8	12,896.6
Total Rating	12,033	20,967	33,000

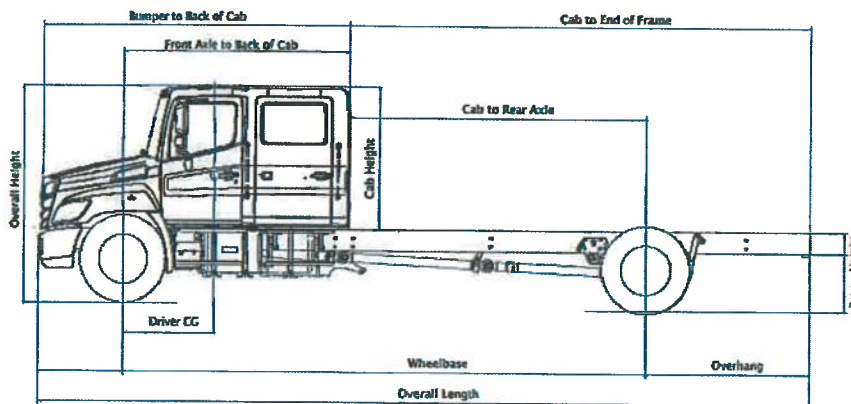
*Chassis weight shown is a wet weight and does not include driver.

Weight Rating	Rating	Weight (lbs)
	GVWR	33,000
	GCWR	49,000



Prepared For City of North Richland Hills
 Dealership RUSH - DALLAS
 Prepared By Daniel Anguiano
 Quote Name NRH L7 Crew Cab Dump
 Quote Id 5A95D9E1

Dimensions



Bumper To Back Of Cab	152.8 in
Cab Height	69.7 in
Driver Center Of Gravity	49.6 in
Cab To End Of Frame	237.8 in
Cab To Rear Axle	140.8 in
Front Axle to Back of Cab	112.2 in
Overall Height	106.7 in
Overall Length	390.6 in
Overhang	97.0 in
Unladen Frame Height	39.0 in
Wheelbase	253.0 in



Quote WTTLLC00013361 Page 1 of 3 Date 9/23/2022

Warren Truck and Trailer, LLC
15768 US HIGHWAY 271 NORTH
Talco TX 75487

Phone (888) 734-4400
Fax (903) 379-4400
WarrenTruckAndTrailer.com

Bill To	Ship To	Contact
RUSH ENTERPRISES/RUSH TRUCK CENTER RUSH MEDIUM DUTY TRUCKS 4200 IRVING BLVD DALLAS TX 75247	RUSH ENTERPRISES/RUSH TRUCK CENTER RUSH MEDIUM DUTY TRUCKS 4200 IRVING BLVD DALLAS TX 75247	DANIEL ANGUIANO (214) 624-9103 Ext. 0000

Purchase Order No.		Customer ID	Salesperson ID	Shipping Method	Payment Terms	Req Ship Date	Master No.
		RUS401	Chris	DELIVERED	Net30	0/0/0000	10,021,505
QTY	Item Number	Description	UOM	Unit Price	Ext. Price		
1	F-10	DUMP BODY - FRAME TYPE - 10' Q-13361 N RICHLAND HILLS Yardage: 6/8 Floor Material: 3/16 A1011 Front / Material: 38" 10 GA A1011 Side / Material: 32" 10 GA A1011 Vertical Side Brace: Yes Horizontal Brace: No Hoist / Cylinder: T10-5383 Hyd Tank: Steel Side Mount 13/9 GAL (600-80102) Hydraulics: 85 CC Gear Pump w DIN Shaft Tipping Valve: Tank Mount					
1	TAILGATE	Air Operated: Yes Panel: 3 Vertical Material: 10 GA A1011 Height: 38 Slope: None Chains: 5/16" Double Acting: Yes High Lift Gate: No Side Swing - Ground Operated: No Center Opening: No Material Gate: None Water Tight: None					
1	DB OPTIONS # 1	Cabshield: Full Width-1/2 (24") Asphalt Apron: 9" BOLT ON Bolt On: YES Center Board Pockets: No					
1	LIGHTS	Lights/Harness: LED Lights and Standard Harness Oval STT: None					
1	INSTALL	Hydraulic Hoses/Fittings: Yes Pump: 85 CC Gear Pump w DIN Shaft Console: CLUTCH SHIFT AIR					



Quote WTTLLC00013361 Page 2 of 3 Date 9/23/2022

Warren Truck and Trailer, LLC
15768 US HIGHWAY 271 NORTH
Talco TX 75487

Phone (888) 734-4400
Fax (903) 379-4400
WarrenTruckAndTrailer.com

Purchase Order No.		Customer ID	Salesperson ID	Shipping Method	Payment Terms	Req Ship Date	Master No.
		RUS401	Chris	DELIVERED	Net30	0/0/0000	10,021,505
QTY	Item Number	Description	UOM	Unit Price	Ext. Price		
1	PAINT	Conspicuity Tape: No Mudflaps and Brackets: Yes Chrome Turnouts: No Splash/Gravel Guards: No Side Boards: Metal -2x6 Covers: No Wires in Conduit No Delivery Fuel/Charges: Yes Color: Warren Black (800-80007)					
1	PTO	POWER TAKE OFF PTO Muncie MC1 Series (Auto) ALLISON AUTOMATIC Note: Not following OEM maintenance can result in non warrantable failure. Check for leaks and loose mounting hardware within first week of use. Recheck at regular maintenance periods (see OEM manual for intervals).					
1	POWER AND BEYOND	POWER AND BEYOND SPREADER CONTROLS FURNISHED & INSTALLED TO OPERATE MONROE MSV-144-84-50 V-BOX SAND SPREADER. HYDRAULICS PLUMBED TO EACH SIDE OF THE TRUCK TRAME WITH QUICK CONNECTS AND DUST CAPS. (2) PRESSURE (1) RETURN 30 GAL SIDE MOUNT TANK 10 MICRON RETURN LINE FILTER SPREADER CONTROLS MOUNTED IN CAB.					
1	TARP SYSTEM	TARP system - installed TARP system - installed Installation: Installed Brand: Donovan - 5000XGL - GROUND LEVEL CRANK W/ CHAIN GUARD - 18803902 Manual / Electric: Manual Type: Arm Aluminum / Steel: Steel Arms Bent Arm: Yes Tarp Size: 90"x18" Tarp Type: Mesh Side Flaps: No					
1	TOW PACKAGE	Pintle Plate: 3/4" Pintle Hitch: 15 Ton Swivel - BUYERS -					



Quote WTTLLC00013361 Page 3 of 3 Date 9/23/2022

Warren Truck and Trailer, LLC
15768 US HIGHWAY 271 NORTH
Talco TX 75487

Phone (888) 734-4400
Fax (903) 379-4400
WarrenTruckAndTrailer.com

Purchase Order No.		Customer ID	Salesperson ID	Shipping Method	Payment Terms	Req Ship Date	Master No.	
		RUS401	Chris	DELIVERED	Net30	0/0/0000	10,021,505	
QTY	Item Number	Description				UOM	Unit Price	Ext. Price
1	DELIVERY	BP100A Glad Hands: No D Rings: Yes Tow Hooks: No Electric Plug: 7 Way RV - TOP EDGE OF PLATE Pup Rigging: No (2) ROUND STT/REVERS SURFACE MOUNT COMBO LIGHTS MOUNTED ON PLATE L & R SIDES - MAXIMA M85417R SINGE EYELET ABOVE HITCH FOR TRAILER "BREAK AWAY CABLE" 12V ELECTRIC BRAKE CONTROLLER WIRED TO 7 WAY RV PLUG CAP GLAD HAND AIR LINES AT END OF FRAME. DELIVER COMPLETED UNIT TO RUSH ENTERPRISES - DALLAS TX - IRVING BLVD. DELIVERY AND FUEL CHARGES SHOWN BELOW.						

Quotation reviewed and accepted by:
(signed) _____

Please fax back to us for entry as an order

NOTE: Quotation good for 10 days only