

# TEXAS LOCAL GOVERNMENT PURCHASING COOPERATIVE BUYBOARD

Vendor	RUSH TRUCK CENTER	Date Prepared	10/10/2022
Contact for Vendor:	COLTON KRUSE	Phone	(830) 302-5219
End User:	City of North Richland Hills		
End User Contact:	Zane Ryan	Phone/Fax	(817) 427-6384
Product Description:	Peterbilt 548-Dump		

A: Base Price in Bid/Proposal Number: 601-19			Series: 348/548		\$ 67,772.00
B: Published Options(Items Below)					
	DESCRIPTION	AMOUNT	OPT #	DESCRIPTION	AMOUNT
Peterbilt	Frame & Equipment	\$ 951.00	RTC-0051	OEM + Safety Analysis	\$ 1,275.00
Peterbilt	Front/Rear Axles & Equipment	\$ 17,180.00	RTC-0122	Refuse Body Prep	\$ 3,934.00
Peterbilt	Engine/Transmission & Equipment	\$ 18,951.00	RTC-0096	Hydraulics & PTO	\$ 10,316.00
Peterbilt	Air & Trailer/Tires & Wheels	\$ 1,991.00	RTC-0008	Dump Body	\$ 27,111.00
Peterbilt	Fuel Tanks/Battery Box & Bumper	\$ 754.00	RTC-1026	Lot Insurance/Floorplan Intrest	\$ 5,259.13
Peterbilt	Cab & Equipment	\$ 3,506.00			
Subtotal Column 1:		\$ 43,333.00	Subtotal Column 2:		\$ 47,895.13
Published Options added to Base Price(Subtotal of "Col 1" & "Col 2")					\$ 91,228.13

C: Subtotal of A + B					\$ 159,000.13
D: Non Published Options					
Warren Dump Body with Options	\$ 2,889.00				
Subtotal Column 1:		\$ 2,889.00	Subtotal Column 2:		\$ -

Unpublished Options added to Base price (Subtotal "Col 1 + Col 2")	\$ 2,889.00
--	-------------

E: Contract Price Adjustment (If any, explain here)					
Peterbilt Model Year Increase	\$ 15,998.00				
Global Supply Chain Surcharge/Fuel Surcharge	\$ 13,925.00				\$ 29,923.00

F: Total of C + D +/- E	\$ 191,812.13
-------------------------	---------------

G: Quantity ordered Units: 1 x	\$ 191,812.13
--------------------------------	---------------

H: BUYBOARD Administrative Fee	\$ 400.00
--------------------------------	-----------

I: Non-Equipment Charges & Credits (I.e.: Ext. Warranty, Trade-In, Delivery, etc.)					
Freight	\$ 2,650.00	x	1		\$ 2,650.00
Paccar Protection Plan 1 (6/150)	\$ 2,595.00	x	1		\$ 2,595.00
Paccar Aftertreatment Plan (6/150) & 1 Year Towing	\$ 1,250.00	x	1		\$ 1,250.00
					\$ 6,495.00

J: TOTAL PURCHASE PRICE INCLUDING (G+H+I)	\$ 198,707.13
---	---------------



Rush Pblt Md Trk Ctr - DI (D551)  
4200 Irving Blvd.  
Dallas, Texas 75247

North Richland Hills  
4301 City Point Dr  
North Richland Hills, Texas 76180  
United States of America

Daniel Anguiano  
Cell Phone:  
Office Phone: 214-905-9212  
Email: anguianod@rushenterprises.com

Zane Ryan  
Cell Phone: 8174276384

## Vehicle Summary

Unit		Chassis	
Model:	Model 548	Fr Axle Load (lbs):	14600
Type:	Full Truck	Rr Axle Load (lbs):	40000
Description 1:	Truck 5510 Replacement	G.C.W. (lbs):	54600
Description 2:	54.6K GVWR 12yd Dump		
<b>Application</b>		Road Conditions:	
Intended Serv.:	Construction Dump-On/Off Highway	Class A (Highway)	90
Commodity:	Construction Materials	Class B (Hwy/Mtn)	10
		Class C (Off-Hwy)	0
		Class D (Off-Road)	0
<b>Body</b>		Maximum Grade:	6
Type:	End Dump	Wheelbase (in):	205
Length (ft):	12	Overhang (in):	75
Height (ft):	12	Fr Axle to BOC (in):	69.5
Max Laden Weight (lbs):	40000		
<b>Trailer</b>		Cab to Axle (in):	135.5
No. of Trailer Axles:	0	Cab to EOF (in):	210.5
Type:		Overall Comb. Length (in):	320
Length (ft):	0		
Height (ft):	0	<b>Special Req.</b>	
Kingpin Inset (in):	0		
Corner Radius (in):	0		
<b>Restrictions</b>			
Length (ft):	40		
Width (in):	102		
Height (ft):	13.5		

Approved by:

X

Date:

Note: All sales are F.O.B. designated plant of manufacture.



Sales Code	Std/ Opt	Description	Weight
<b>Base Model</b>			
0005481	S	<b>Model 548</b> The Model 548 meets and exceeds the demands of Class 7 and Class 8 specialty application markets that require a rugged workhorse for durability and a wide range of optional content. The Model 548 is available in configurations with a GVW from 33,001 to 66,000 lbs. to suit most vocational applications. The 548 also offers all-wheel-drive. From construction and crane service to utility and delivery services in both Class 7 and Class 8 markets, the 548 is in a class of its own.	10,860
0091070	O	<b>Construction Materials</b>	0
0093060	O	<b>Construction Dump-On/Off Highway</b> Truck or tractor without liftable trailing axle which carries bulk materials (excavated earth, sand/gravel, asphalt, demolition debris, etc.) and unloads by dumping out the back, over the side of the body, or out the bottom of the trailer.	0
0095170	O	<b>End Dump</b>	0
0098170	S	<b>United States Registry</b> Canadian Registry Package Requires Air Conditioning Excise Tax Canada, Speedometer to be KPH ipo MPH, Daytime Running Lights and Rubber Battery Pad in Bottom of Battery Box.	0
<b>Configuration</b>			
0200700	S	<b>Not Applicable</b> Secondary Manufacturer	0
<b>Frame &amp; Equipment</b>			
0514000	O	<b>10-3/4" Steel Rails To 354"</b> 10.75x3.5x.375 Dimension, 2,136,000 RBM; Yield Strength: 120,000 psi. Section Modulus: 17.8 cubic inches. Weight: 1.74 lbs/inch pair	388
0611300	S	<b>Heavy Duty 5-Piece Crossmember BOC IPO Standard</b> Class 5, 6, 7	0
0611330	O	<b>Zinc Coated Anti Corrosion Treated Frame Rails</b> Requires Frame Rail Code. Zinc Phosphate coating will replace the standard frame rail primer and provide added corrosion prevention for your customer's operating in severe conditions or in climates where vehicle rust is common.	2
0611790	S	<b>Aluminum Frame Rail Crossmembers</b> Excludes suspension	0
0613095	O	<b>3-Piece Suspension Crossmembers</b>	0
0613340	O	<b>205" Wheelbase</b> 75" Overhang For Dump Application	0
0644090	S	<b>EOF Square without Crossmember</b> End-of-frame square without crossmember. For use with body builder installed crossmember.	0
0651090	O	<b>Omit Rear Mudflaps and Hangers</b>	-25

Price Level: January 1, 2023  
Deal: Truck 5510 Replacement  
Printed On: 10/10/2022 12:40:22 PM

Date: October 10, 2022  
Quote Number: QUO-929354-P0G6H1





Sales Code	Std/ Opt	Description	Weight
<b>Front Axle &amp; Equipment</b>			
1014140	O	<b>Hendrickson SteerTek NXT 14,600 lb</b> 3.32" Drop	22
1112150	O	<b>Taper Leaf Springs, Shocks 14,600 lb</b> Hendrickson Taper Leaf Springs, shocks 14,6000 lb.	56
1243060	O	<b>Power Steering Sheppard SD110</b> The SD110 power steering gear is a compact version of the M110 power steering gear. The SD110, working with a 185 bar pump is capable of steering vocational and heavy haul vehicles with front axle ratings of 13,200 to 16,000 lbs. in single gear applications.	44
1250180	S	<b>Power Steering Reservoir Frame Mounted</b> The power steering reservoir is a steering system that eases drivability by applying hydraulic pressure to the steering gear.	0
1354840	S	<b>PHP10 Iron PreSet PLUS Hubs</b> PHP10 iron PreSet PLUS hubs have a fully integrated spindle nut design, an optimized wheel spacer, magnetic fill plug on drive and trailer hubs for inspection of metal particles in lubricant, with a long life oil seal and bearings are pre-adjusted. Use with Front Axle.	0
1380260	S	<b>Bendix Air Cam Front Drum Brakes 16.5x5</b> For use with 10,000 lbs to 14,600 lbs steer axles. Includes automatic slack adjusters & outboard mounted brake drums.	0
1380550	O	<b>Hendrickson Wide Track IPO Standard</b> Hendrickson Wide Track in place of standard front axle 71" KPI IPO 69" front axle for improved turning radius.	0
1391410	S	<b>Gusseted Cam Brackets, Steer Axle</b>	0
<b>Rear Axle &amp; Equipment</b>			
1526155	O	<b>Meritor MT40-14X Plus 40,000 lb</b>	1,970
1616300	S	<b>PHP10 Iron PreSet PLUS Hubs</b>	0
1680450	O	<b>Rear Brake Camshaft Reinforcement</b> Rear brake camshaft reinforcement helps guard against wear and corrosion.	9
1680460	O	<b>Heavy Wall, Drive Axle(s)</b>	88
1680490	O	<b>Gusseted Cam Brackets, Drive Axle(s)</b>	2
1680500	S	<b>SBM Valve</b> Full trucks require a spring brake modulation (SBM) system for emergency braking application. This system requires an SBM valve and a relay valve with spring brakes on the rear axles. The SBM valve allows the foot valve to operate the rear axle spring brakes if a failure exists in the rear air system.	0
1680950	S	<b>Stability System Not Selected Or Not Available</b>	0
1682710	O	<b>Anti-Lock Braking System (ABS) 6S6M</b> ABS-6. Includes air braking system.	35

Price Level: January 1, 2023  
Deal: Truck 5510 Replacement  
Printed On: 10/10/2022 12:40:22 PM

Date: October 10, 2022  
Quote Number: QUO-929354-P0G6H1





Sales Code	Std/ Opt	Description	Weight
1684200	S	<b>Synthetic Axle Lubricant All Axles</b> Peterbilt heavy duty models include Fuel Efficient Cognis EMGARD FE75W-90 which provides customers performance advantages over current synthetic lubricants with reduced gear wear and extended maintenance intervals, resulting in increased uptime. In addition, the lubricant provides improved fluid flow to protect gears in extreme cold conditions and withstand the stress from high temperatures, extending component life.	0
1687010	S	<b>Bendix Air Cam Rear Drum Brakes 16.5x7</b> Bendix Air Cam Rear Drum Brakes to fit all heavy haul, construction, refuse and highway truck and tractor applications. Includes Automatic Slack Adjusters & Outboard Mounted Brake Drums.	0
1687090	O	<b>Diff Lock Tandem Axles</b> With Speed Interlock. Automatically Disengages Wheel Diff Lock at Speeds Above 25 mph.	60
1704880	O	<b>Ratio 4.88 Rear Axle</b>	0
1821800	O	<b>Peterbilt Air Trac 40,000 lbs, 52in Axle Spacing</b> Light Weight	550
1920385	O	<b>Air Springs, Internal Bumpers</b> Air Trac / Air Leaf suspensions	0
1922260	O	<b>Dash Mtd Dump Switch with Indicator Light</b> Dash mounted dump switch with indicator light for suspension.	2

#### Engine & Equipment

2074513	O	<b>PACCAR PX-9 370@1900 GOV@2100 1250@1200</b> Performance (2021 Emissions)	0
		N21350 C121 68....Maximum Accelerator Pedal Ve	
		N21370 C128 68....Maximum Cruise Speed (P059)	
		N21460 C132 1400..Max PTO Speed (P046)	
		N21520 C133 5.....Timer Setting (P030)	
		N21610 C188 39....Low Ambient Temperature Thre	
		N21620 C189 60....Intermediate Ambient Tempera	
		N21630 C190 80....High Ambient Temperature Thr	
		N21550 C206 35....Engine Load Threshold (P516)	
		N21340 C209 120...Hard Maximum Speed Limit (P1	
		N21510 C225 YES...Enable Idle Shutdown Park Br	
		N21450 C231 NO....Gear Down Protection (P026)	
		N21570 C233 NO....Idle Shutdown Manual Overrul	
		N21440 C234 YES...Engine Protection Shutdown (	
		N21480 C238 NO....Auto Engine Brake in Cruise	
		N21470 C239 NO....Cruise Control Auto Resume (	
		N21430 C333 0.....Reserve Speed Limit Offset (	
		N21410 C334 0.....Maximum Cycle Distance (N202	
		N21590 C382 YES...Enable Hot Ambient Automatic	
		N21500 C395 0.....Expiration Distance (N209)	
		N21530 C396 YES...Enable Impending Shutdown Wa	
		N21540 C397 60....Timer For Impending Shutdown	
		N21320 C399 120...Standard Maximum Speed Limit	

Price Level: January 1, 2023  
Deal: Truck 5510 Replacement  
Printed On: 10/10/2022 12:40:22 PM

Date: October 10, 2022  
Quote Number: QUO-929354-P0G6H1



Sales Code	Std/ Opt	Description	Weight
		N21400 C400 252...Reserve Speed Function Reset N21420 C401 10....Maximum Active Distance (N20 N21330 C402 0.....Expiration Distance (N207)	
2091130	S	<b>VMUX Electronics Architecture</b>	0
2091310	O	<b>Engine Idle Shutdown Timer Disabled</b>	0
2091315	O	<b>Enable EIST Ambient Temp Override</b>	0
2091372		<b>Eff EIST NA Expiration Miles</b>	0
2091640		<b>Effective VSL Setting NA</b>	0
2092017	O	<b>Typical Operating Speed 68 MPH</b>	0
2092033	O	<b>Powertrain Optimized for Balance</b> Best analysis for vehicles where service includes frequent start and stop cycles.	0
2140220	S	<b>CARB Engine Idling Compliance DECLINED By</b> Dealer/Customer	0
2140460	S	<b>Remote PTO/Throttle, 12-Pin, 250K BOC/BOS</b> J1939, Remote Control Provision	0
2140480	O	<b>Remote PTO/Throttle, 12-Pin, 500K, BOC/BOS</b> J1939, Remote Control Provision	0
2140590	S	<b>14-Pin Body Lighting Connector</b>	0
2140670	O	<b>EPA Emission Warranty</b>	0
2141990	O	<b>Omit Chevron Engine Oil Sticker</b> (DELO)	0
2513060	S	<b>PACCAR 160 Amp Alternator, Brushed</b> PACCAR 160 AMP alternator, brushed producing 160 Amps at road speed and 100 Amps at idle.	0
2521090	O	<b>Immersion Type Block Heater 110-120V</b> Standard location for 2.1M and 1.9M models is left-hand under cab, Model 520 is in bumper, and for Model 220 it is at the driver step. Plug includes a weather-proof cover that protects the receptacle. This pre-heater keeps the coolant in the engine block from freezing when the engine is not running.	2
2522110	S	<b>PACCAR 12V Starter, N/A PACCAR MX Engines</b> PACCAR 12-volt electrical system. With centralized power distribution incorporating plug-in style relays. Circuit protection for serviceability, 12-volt light system w/circuit protection circuits number & color coded.	0
2538030	S	<b>2 PACCAR Premium 12V Starting Batteries 2000 CCA</b> Threaded stud type terminal. Stranded copper battery cables are double aught (00) or larger to reduce resistance.	0
2539410	O	<b>Battery Jumper Terminal Mounted Under Hood</b> LH Frame Rail. Not available with PX-7 engines.	4

Price Level: January 1, 2023  
Deal: Truck 5510 Replacement  
Printed On: 10/10/2022 12:40:22 PM

Date: October 10, 2022  
Quote Number: QUO-929354-P0G6H1





Sales Code	Std/ Opt	Description	Weight
2539850	O	<b>MD - Battery Disconnect Switch</b> Mounted in Cab, Outboard Drivers Seat	9
2621090	S	<b>DM Advantage ON/OFF Fan Clutch</b> Horton DM Advantage Two-Speed Fan Clutch On/Off for heavy-duty, medium-duty and a variety of off-highway equipment.	0
2723210	S	<b>18.7 CFM Air Compressor</b> N/A X15. Furnished on engine. Teflon lined stainless steel braided compressor discharge line.	0
2812210	S	<b>VGT Exhaust Brake</b> (Variable Geometry Turbo). Provides approximately 90-100 HP of retardation and is part of the turbocharger.	0
2921110	S	<b>PACCAR Fuel/Water Separator Standard Service</b> PACCAR Fuel/Water separator standard service intervals. High efficiency media protects critical engine components.	0
2921210	S	<b>No Fluid Heat Option for Fuel Filter</b>	0
2921310	S	<b>No Electric Heat Option for Fuel Filter</b>	0
3010400	O	<b>Engine Protection Shutdown w/ Label</b> Includes oil pressure, oil temperature, coolant temperature, and intake manifold temperature.	0
3114270	S	<b>High Efficiency Cooling System</b> Cooling module is a combination of steel and aluminum components, with aluminum connections to maximize performance and cooling capability. Silicone radiator & heater hoses enhance value, durability, & reliability. Constant tension band clamps reduce leaks. Chevron Delo Extended Life Coolant (NOAT) extends maintenance intervals reducing maintenance costs. Anti-freeze effective to -30 degrees F helps protect the engine. Low coolant level sensor warns of low coolant condition to prevent engine damage. Radiator Size by Model: 367 1325 sq in, 367 HH Fepto 1325 sq in, 365 Fepto 1183 sq in, 365 Full Frame Extension 1000 sq in, 520 1202 sq in, 579 1456.9 sq in, 535/536/537/548 949.3 sq in, 537/548 VOC 1000.3 sq in, 389/367 HH 1604 sq in, 365/567 1379 sq in.	0
3211140	S	<b>(1) Air Cleaner Engine Mounted</b>	0
3365280	S	<b>Exhaust Single RH Horizontal</b> DPF/SCR RH Under Cab.	0

### Transmission & Equipment

4052110	O	<b>Allison 3000 RDS-P Transmission, Gen 5</b> Rugged Duty Series. Includes Rear Transmission Support except on MX engines, Mobil Delvac Automatic Transmission Fluid, and Water-Oil Heat Exchange. Also includes features that monitor the transmission fluid, filter and clutch condition. Will display percent life remaining for the transmission fluid, filter and clutches on the shift selector. This information may be displayed using the Mode and Up and Down buttons. A wrench icon will also be included to indicate when the transmission fluid, filter or clutches need servicing. Suited for vehicles operating on/off highway and/or requiring PTO operation. Forward	459
---------	---	--	-----





Sales Code	Std/ Opt	Description	Weight
		ratios: 1st-3.49, 2nd-1.86, 3rd-1.41, 4th-1.00, 5th-0.75, 6th-0.65. Reverse ratios: DR-(5.03).	
4211000	O	<b>SPL170 HD-XL Driveline, 1 Midship Bearing</b>	20
4216330	O	<b>SPL170 XL Driveline Interaxle</b> Dana Spicer Life Series heavy-duty drive shafts are built for heavy loads over the long haul. For tandem rear axles.	-110
4233890	O	<b>(2) Dash Mounted Single Acting EOA PTO Controls</b> Electric-over-air (EOA), spec'ing PTO (power-take-off) control switch does not ensure the PTO will fit.	2
4240010	O	<b>Allison Transmission Oil Cooler</b> Aero with Allison 4000 or high torque PX-9	13
4252890	O	<b>Allison FuelSense 2.0 Not Desired</b>	0
4252940	O	<b>Allison Neutral At Stop</b> Neutral at Stop features and benefits: Reduces or eliminates the load on the engine when vehicle is stopped, can help lower fuel consumption and CO2 emissions, and is included in FuelSense 2.0 Plus and Max packages only.	0
4256640	O	<b>Allison 6-Speed Configuration, Close Ratio Gears</b> 3000 Series Transmissions.	0
4256920	O	<b>Dash Mounted Push Button Shifter</b> Available with Allison transmissions	3
4257110	O	<b>LH Mounted Trans PTO Provisions</b>	0
<b>Air &amp; Trailer Equipment</b>			
4510190	S	<b>Bendix AD-HF Air Dryer, Heater</b> Bendix AD-HF air filters protects the life of your engine system and components. Proven PuraGuard oil coalescing technology in the the air dryer cartridge. This oil coalescing filter ensures the removal of oil and oil aerosols before they can contaminate the moisture removing desiccant.	0
4520420	O	<b>Pull Cords All Air Tanks</b>	0
4540420	S	<b>Nylon Chassis Hose</b>	0
4543320	S	<b>Steel Painted Air Tanks</b> All air tanks are steel with painted finish except when Code 4543330 Polish Aluminum Air Tanks is also selected (then exposed air tanks outside the frame rails will be polished aluminum). Peterbilt will determine the optimal size and location of required air tanks. Narratives requesting a specific air tank size or location will not be accepted for factory installation. See ECAT to determine number or location of air tanks installed.	0
<b>Tires &amp; Wheels</b>			
5064010	O	<b>FF: BR 20ply 315/80R22.5 M870</b>	94

Price Level: January 1, 2023  
Deal: Truck 5510 Replacement  
Printed On: 10/10/2022 12:40:22 PM

Date: October 10, 2022  
Quote Number: QUO-929354-P0G6H1



Sales Code	Std/ Opt	Description	Weight
		Efficiency Rating: Fair Diameter= 42.8 inches; SLR= 19.9 inches The Bridgestone M870 is a high scrub All-Position Radial tire designed specifically for urban waste collection.	
5161070	O	<b>RR: BR 14ply 11R22.5 M713 Ecopia</b> Efficiency Rating: Optimal Ecopia is an ultra-fuel-efficient drive radial designed for tandem axle applications in long-haul and regional service.	8
5190008	O	<b>Code-rear Tire Qty 08</b>	0
5210550	O	<b>FF: Accur Std Armor 29039PK 22.5X9.00</b> PHP10-5 Hand Holes	80
5311020	S	<b>RR: Accur Std Armor 51455PK 22.5X8.25</b> PHP10-5 hand holes.	0
5390008	O	<b>Code-rear Rim Qty 08</b>	0
<b>Fuel Tanks</b>			
5584040	O	<b>D-Shaped Aluminum 50 Gallon Fuel Tank LH U/C</b> Non-slip step LH under cab	-10
5602050	O	<b>Location LH U/C 50 Gallon</b>	0
5652890	S	<b>DEF Tank Mounted LH BOC</b> Models 220 and 520 mounted left hand back-of-cab.	0
5652990	O	<b>DEF To Fuel Ratio 2:1 Or Greater</b>	0
5655019	S	<b>DEF Tank Small, HD 14 Gal 2.1M MD 5.5 Gal</b>	0
<b>Battery Box &amp; Bumper</b>			
6010780	O	<b>Aluminum Space Saver Battery Box RH BOC</b> Battery access from side	-84
6030150	O	<b>Rubber Battery Pad In Bottom of (1) Battery Box</b> Mat in box that holds batteries only	4
6040550	S	<b>Aftertreatment Aluminum Non-Slip Cab Entry</b> Aftertreatment right-hand under cab step. DPF/SCR for diesel engines, catalyst for natural gas engines. On Models 579 specifying chassis fairings, the box is aerodynamic.	0
6121770	O	<b>Steel Bumper Tapered Painted</b> Two tow points, painted same color as frame. ***Warning*** Due to a new legal regulations, all New Medium Duty trucks require headlights to be located in the bumper when the chassis height is GREATER than the following chassis height:  Measurement to bottom of frame at front of frame: for the 107 Aero Hood 32.6, for the 109 Aero Hood 31.4, for the 109 Vocational Hood 26.7. Work with applications if your chassis height is unacceptable.	40
<b>Cab &amp; Equipment</b>			



Sales Code	Std/ Opt	Description	Weight
6510160	O	<b>Aerodynamic 109in BBC Aluminum Cab &amp; SMC Hood</b> With molded charcoal crown.	15
6540160	O	<b>Thermal Insulation Package in Cab</b> The thermal insulation package is designed to make the cab thermally efficient in extreme temperatures. The model 520 adds insulation surrounding the doghouse to reduce engine heat transmitted to the cab.	2
6800180	O	<b>Hood Crown - Bright Finish ipo Molded Gray</b>	0
6917320	S	<b>Seats Inc. Driver Seat</b>	0
6927320	S	<b>Seats Inc. Passenger Seat</b>	0
6930230	O	<b>Seat Skirt - All Eligible Air Seats</b>	2
6930500	O	<b>Drivers Armrest - RH Only</b>	2
6930590	O	<b>Passenger Armrest - LH only</b> Required with Evolution LX seats, optional with Evolution ST Seats.	2
6930800	O	<b>Black Seat Color IPO Standard Color</b>	0
6939400	S	<b>Air Ride Driver</b>	0
6939420	O	<b>High Back Driver</b>	0
6939470	S	<b>Vinyl Driver</b>	0
6939500	O	<b>Air Ride Passenger</b>	0
6939520	O	<b>High Back Passenger</b>	0
6939570	S	<b>Vinyl Passenger</b>	0
7000045	O	<b>High-Visibility Interior Grabhandles, Painted</b> Bright yellow interior grabhandle for vocational vehicles.	0
7000065	O	<b>Metal Interior Door Panel Kick Plates</b>	2
7001520	S	<b>Adjustable Steering Column - Tilt/Telescope</b>	0
7001620	S	<b>Steering Wheel With Peterbilt Logo</b> Steering Wheel with embossed Peterbilt logo over horn button.	0
7036130	O	<b>Probilt Interior Grey/Black - Curved Roof</b>	0
7110680	O	<b>Exterior Cab Entry Grabhandle</b> Textured; NFPA compliant. Available on Day Cab specifications only.	0
7210420	O	<b>Dark Window Tint IPO Standard Tint - Day Cab</b>	0
7210540	S	<b>Day Cab Rear Window</b> Day cab rear window flush to back of cab.	0

Price Level: January 1, 2023  
Deal: Truck 5510 Replacement  
Printed On: 10/10/2022 12:40:22 PM

Date: October 10, 2022  
Quote Number: QUO-929354-P0G6H1





Sales Code	Std/ Opt	Description	Weight
7210550	S	<b>1-Piece Glass Rear Cab Window Fixed</b>	0
7230060	S	<b>1-Piece Curved Windshield</b>	0
7230360	S	<b>Power Door Locks and Power Window Lifts</b> Standard	0
7322010	S	<b>Combo Fresh Air Heater/Air Conditioner</b> With radiator mounted condenser, dedicated side window defrosters, Bi-Level Heater/Defroster Controls, 54,500 BTU/HR, and silicone heater hoses.	0
7322130	O	<b>Cup Holder (Floor Mounted)</b> Includes two standard-size drink holders and one extra-large jugholder, coin tray, and clipboard-size storage area.	4
7330880	O	<b>Additional Fine Particulate Filter For HVAC Syst</b> 3 micron filtration. For use in extreme high dust applications. Not available with Ember filter 7330890.	1
7510070	S	<b>Aero Rear View Mirror Housing, Molded Black</b>	0
7514010	O	<b>Peterbilt Aero Rear View Mirror, Motorized</b> Includes top mirror with motorized, adjustable dual axis heated glass. Bottom mirror is an integrated convex surface. Includes black textured arms with breakaway feature.	3
7514050	S	<b>Look Down Mirror Over Passenger Door</b> with Black Housing	0
7610500	S	<b>Air Horn Mounted Under Cab</b>	0
7722120	O	<b>ConcertClass, AM/FM, Weatherband, 3.5 Aux</b>	11
7725710	O	<b>Standard Speaker Package For Cab</b> (2) Speakers	4
7728030	O	<b>Radio Mute When In Reverse</b> For automatic or automated transmission	0
7728040	O	<b>Bluetooth Phone and Audio Requires USB Port</b>	0
7728050	O	<b>USB Port</b>	0
7851480	S	<b>Peterbilt Electric Windshield Wipers</b> With Intermittent Feature.	0
7852020	O	<b>Cab Air Suspension</b>	15
7852050	O	<b>Auto Reset Circuit Protection</b> Daycab and Sleeper	0
7900090	O	<b>Triangle Reflector Kit, Ship Loose</b> Florescent triangle emergency road flares are designed to meet and exceed all DOT standards.	13
7900320	O	<b>Fire Extinguisher, Mounted Inboard Driver Seat</b> Hazmat approved UL listed/rated ABC	9
7900401	O	<b>Cruise Control Inactive With Wipers On</b>	0

Price Level: January 1, 2023  
Deal: Truck 5510 Replacement  
Printed On: 10/10/2022 12:40:22 PM

Date: October 10, 2022  
Quote Number: QUO-929354-P0G6H1



Sales Code	Std/Opt	Description	Weight
7900520	O	Headlamps To Turn On When Wipers On	0
7901130	O	Backup Alarm (107 DB)	3
8011850	O	Transmission Oil Temperature (Main) Located in Digital Cluster Display.	0
8021380	S	Air Restriction Indicator Mounted on air cleaner, intake piping, or firewall	0
8070390	O	Engine Hourmeter Gauge Located in Digital Cluster Display	0
8070450	O	Engine PTO Hourmeter Gauge Located In Digital Cluster Display	0
8070810	O	Engine Manifold Pressure (Turbo Boost) Located in Digital Cluster Display	0
8070820	O	Engine Percent Torque Located in Digital Cluster Display	0
8070860	S	Main Instrumentation Panel Digital Cluster 7" Display includes: Physical (Analog) - Speedometer, Tachometer, Oil Pressure, Coolant Temp and Display Gauges - Fuel Level, DEF Level, DPF Filter Status, Fuel Economy, Volts Telltale, OAT and Primary Air Pressure, Secondary Air Pressure for air brake trucks.	0
8070940	O	Voltmeter Gauge (MD/520 Only) Located in Digital Cluster Display	0
8111110	S	Headlights Composite Fender Mounted Integral DRL/Park, Turn, and Side Marker	0
8120980	S	(5) Marker Lights, Aero LED	0
8134160	S	Self-Canceling Turn Signal	0
8134180	O	Daytime Running Lights, Mounted In Bumper Driven by chassis height	0
8140080	S	LED Stop/Turn/Tail/Backup Bracket mounted left-hand / right-hand end of frame	0
8140850	S	Moveable EOF Crossmember For Mounting Tail Lights Square end of frame with or without end of frame crossmember	0
<b>Paint</b>			
8530770	S	(1) Color Axalta Two Stage - Cab/Hood Base Coat/Clear Coat N85020 A - 809956EY - INGOT SILVER N85700 BUMPER L0001EA BLACK N85500 CAB ROOF 809956EY INGOT SILVER N85300 FENDER 809956EY INGOT SILVER N85200 FRAME L0001EA BLACK N85400 HOOD TOP 809956EY INGOT SILVER	0
8531320	O	Axalta Two Stage Effect - Metallic/Pearl Cab/Hood & Sleeper Only	0

Price Level: January 1, 2023  
Deal: Truck 5510 Replacement  
Printed On: 10/10/2022 12:40:22 PM

Date: October 10, 2022  
Quote Number: QUO-929354-P0G6H1



Sales Code	Std/ Opt	Description	Weight
<b>Shipping Destination</b>			
<b>Options Not Subject To Discount</b>			
9400091	S	Peterbilt Class 7 Standard Coverage 1 year/Unlimited Miles/km	0
9400094	S	PACCAR PX-9 Standard Coverage 2 yrs/250,000 mi (402,336 km)/6,250 hrs	0
9402417	O	1 Year Towing	0
9408703	O	Base Warr: Emissions 5YR/100K MI-EPA Engine	0
<b>Miscellaneous</b>			
9409045	S	Aero Hood (MODEL 548)	0
9409093	O	State Registry: Texas	0
9482313	O	PACCAR Protection Plan 1 (6/150) EPA 2021 Series PX-9 6Yr/150K Mi 241,402 Km	0
9482325	O	PACCAR Aftertreatment Plan (6/150) EPA 2022 Series PX-9 6Yr/150K Mi 241,402 Km	0

#### Promotions

#### Order Comments

Price Level: January 1, 2023  
Deal: Truck 5510 Replacement  
Printed On: 10/10/2022 12:40:22 PM

Date: October 10, 2022  
Quote Number: QUO-929354-P0G6H1





Total Weight

14,685

## Prices and Specifications Subject to Change Without Notice.

---

Unpublished options may require review/approval.

Dimensional and performance data for unpublished options may vary from that displayed in CRM.

---

### **PRICING DISCLAIMER**

*While we make every effort to maintain the web site to preserve pricing accuracy, prices are subject to change without notice. Although the information in this price list is presented in good faith and believed to be correct at the time of printing, we make no representations or warranties as to the completeness or accuracy of this information. We reserve the right to change, delete or otherwise modify the pricing information which is represented herein without any prior notice. We carefully check pricing specifications, but occasionally errors can occur, therefore we reserve the right to change such prices without notice. We disclaim all liability for any errors or omissions in the materials. In no event will we be responsible for any damages of any nature whatsoever from the reliance upon information from these materials. Please check your order prebills to confirm your pricing information*

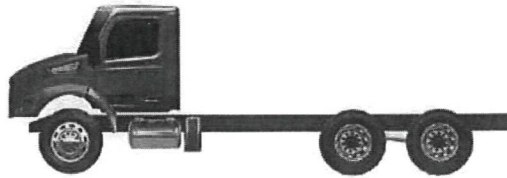


**Shipping Destinations**

**Intermediate Destination:** NONE

<b>Final Destinations</b>	<b>Quantity</b>
Warren Truck & Trailer 15768 US Highway 271 North Talco, Texas 75487	1

## FRAME RAKE



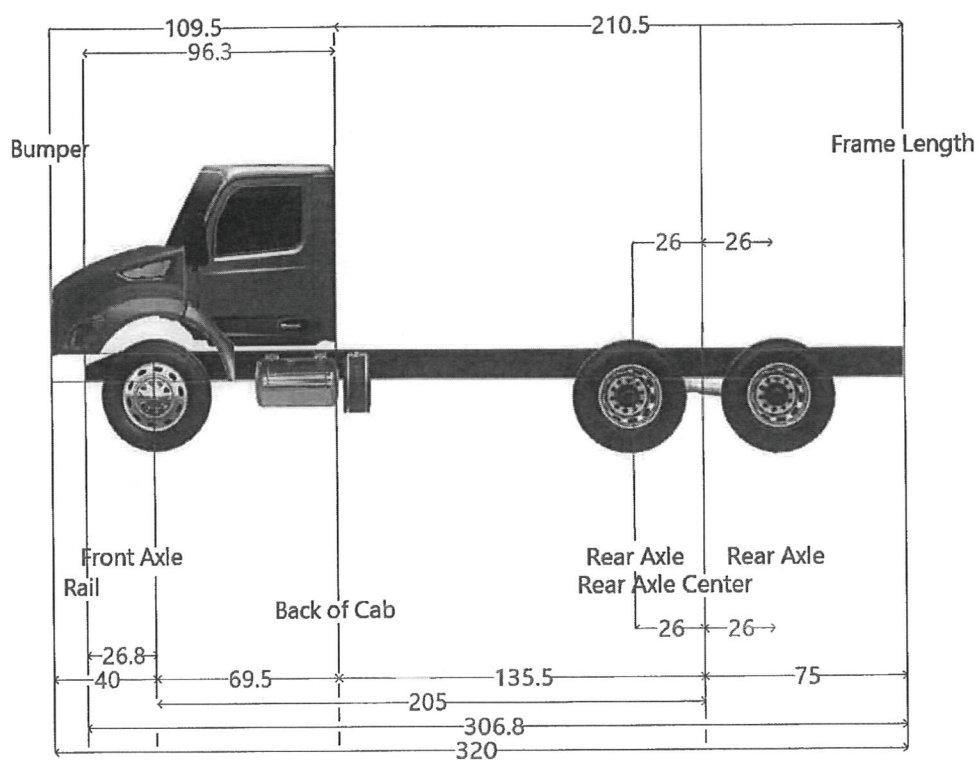
*The listed heights should be considered approximations due to variations which may occur in component manufacturing processes, spring set, and the way in which the vehicle is loaded.*

Component	Sales Code	Description	Laden	Unladen
Frame	0514000	10-3/4" Steel Rails To 354"	10.8	10.8
Front Spring	1112150	Taper Leaf Springs, Shocks 14,600 lb	7.7	9.5
Front Axle Drop 3.5"	1014140	Hendrickson SteerTek NXT 14,600 lb	0.2	0.2
Height Adj.		60mm	2.4	2.4
Front Tires	5064010	FF: BR 20ply 315/80R22.5 M870	19.9	20.5
Front Frame Height			40.9	43.3
Frame	0514000	10-3/4" Steel Rails To 354"	10.8	10.8
Subframe				
Suspension	1821800	Peterbilt Air Trac 40,000 lbs, 52in Axle Spacing	11.0	11.4
Rear Tires	5161070	RR: BR 14ply 11R22.5 M713 Ecopia	19.4	20.6
Rear Frame Height			41.2	42.7
Frame Rake			0.3	-0.6
Frame Rake Slope (%)			0.1	-0.3

*These characteristics are considered to be out of standard range:  
Laden rake more than 1% of wheelbase from level (positive or negative).*

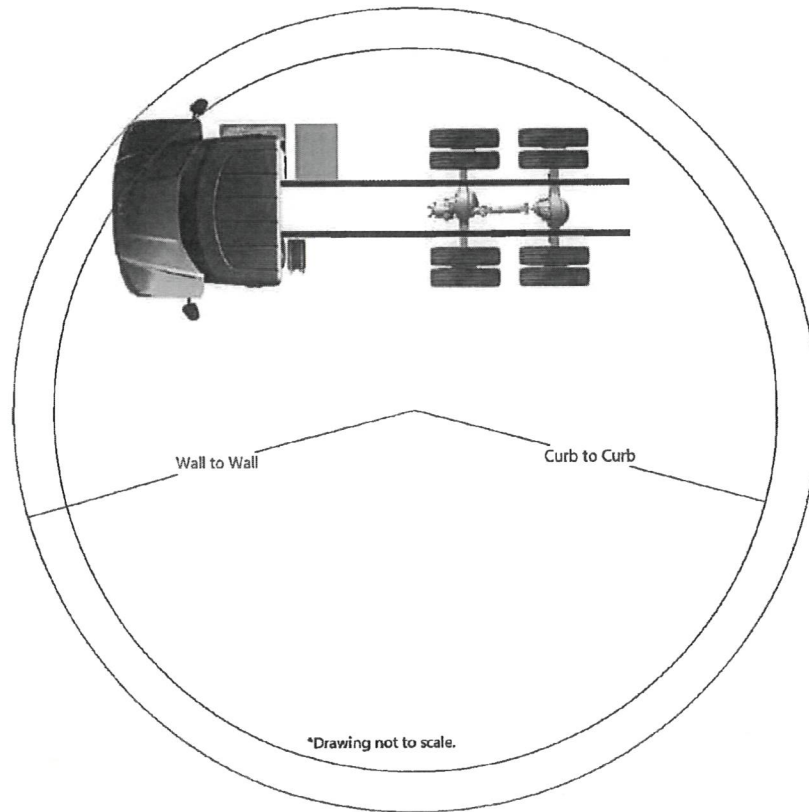


## HORIZONTAL DIMENSIONS



Dimension	Measurement	Start	End
Axle Spacing	52	179	231
Bumper to Back of Cab	109.5	-40	69.5
Bumper to Front Axle	40	-40	0
Bumper to Front Frame	13.2	-40	-26.8
Cab to End of Frame	210.5	69.5	280
Cab to Rear Axle	135.5	69.5	205
Effective Bumper to Back Of Cab	109.5	-40	69.5
Frame Length	306.8	-26.8	280
Front Axle to Back of Cab	69.5	0	69.5
Front of Frame to Axle	26.8	-26.8	0
Load Space	210.5	69.5	280
Overall Length	320	-40	280
Overhang	75	205	280
Pusher Offset #1	0	179	205
Pusher Offset #2	0	179	205
Pusher Offset #3	0	179	205
Tag Offset	0	205	231
Wheelbase	205	0	205

## TURNING RADIUS



LEFT TURN RADIUS		RIGHT TURN RADIUS	
Curb to Curb	#N/A	Curb to Curb	#N/A
Wall to Wall	#N/A	Wall to Wall	#N/A

VEHICLE SUMMARY			
Truck	Model 548 / Full Truck	Wheelbase	205
Axle	Hendrickson SteerTek NXT 14,600 lb	Weight	14685
Tire	FF: BR 20ply 315/80R22.5 M870		
Wheel	FF: Accur Std Armor 29039PK 22.5X9.00		

## VEHICLE WEIGHT RATING

### FRONT AXLE COMPONENTS

Component	Sales Code	Description	Ratings
Axle	1014140	Hendrickson SteerTek NXT 14,600 lb	14,600
Springs	1112150	Taper Leaf Springs, Shocks 14,600 lb	14,600
Power Steering	1243060	Power Steering Sheppard SD110	16,000
Hubs, Drums	1354840	PHP10 Iron PreSet PLUS Hubs	23,000
Brakes			
Tires	5064010	FF: BR 20ply 315/80R22.5 M870	20,000
Wheels	5210550	FF: Accur Std Armor 29039PK 22.5X9.00	20,000

Requested Front (Lbs):      0  
 Minimum:                    10,000  
 Maximum:                   14,600

The front axle weight rating cannot exceed 14600

### REAR AXLE COMPONENTS

Component	Sales Code	Description	Ratings
Axle	1526155	Meritor MT40-14X Plus 40,000 lb	40,000
Hubs, Drums	1616300	PHP10 Iron PreSet PLUS Hubs	78,000
Service Brakes			
Spring Brakes			0
Suspension	1821800	Peterbilt Air Trac 40,000 lbs, 52in Axle Spacing	40,000
Tires	5161070	RR: BR 14ply 11R22.5 M713 Ecopia	46,720
Wheels	5311020	RR: Accur Std Armor 51455PK 22.5X8.25	59,200

Requested Rear (Lbs):      0  
 Minimum:                    19,000  
 Maximum:                   40,000

The rear axle weight rating cannot exceed 40000

### VEHICLE WEIGHT RATING

GCWR (lbs)	54,600
Min	54,600
Max	80,000

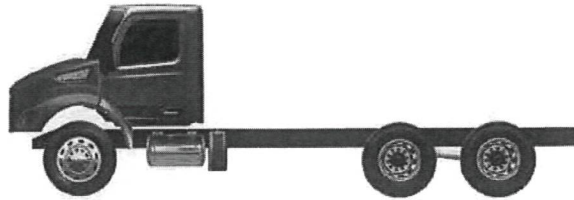
The Gross Combination Weight Rating rating cannot exceed 80000



## WEIGHT DISTRIBUTION

Model: 548

Actual performance of a specific unit can be affected by your operating conditions. The performance calculations should only be used as a guideline.



Recommended payload center of gravity to achieve specified ground loads; measured from centerline of drive axle(s): 34 in. from the centerline of the drive axle(s)."

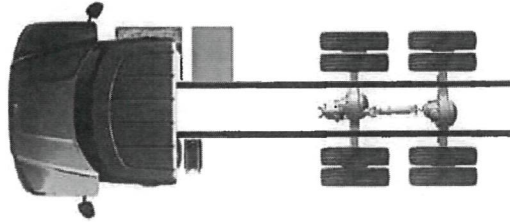
Weight (lbs)	Front	Rear	Total
Chassis	7580	7105	14685
Tools/Driver	293	82	375
Fuel & DEF	328	133	461
Max Payload	6399	32679	39079
Auxiliary Payload	0	0	0
Total	14600	40000	54600
Specify Ground Load	14600	40000	

### Auxiliary Payload

Item	Location from FA CL	Weight	Point Description
Load Point #1	0	0	
Load Point #2	0	0	
Load Point #3	0	0	
Component(s)	-	0	Composite Totals

Fifth wheel slide length is 0 inches  
 Selected rearmost setting is 0 inches  
 Wheelbase measurement: 205 inches  
 Overhang measurement: 75 inches

## FRAME LAYOUT



Note: The image displayed is representative only. It should not be construed as a layout diagram. Dimensions and components are not to scale.

### Selected Options (Wheelbase: 205)

Sales Code	Description	Length	Side
6040550	Aftertreatment Aluminum Non-Slip Cab Entry	45.3	Right
5655019	DEF Tank Small, HD 14 Gal 2.1M MD 5.5 Gal	7	Left
5584040	D-Shaped Aluminum 50 Gallon Fuel Tank LH U/C	32.7	Left
6010780	Aluminum Space Saver Battery Box RH BOC	25.1	Right

## SPEED & GRADE PERFORMANCE REPORTS

### Cruise Report (Engine Fan Off)

Configuration:	Model 548 / Full Truck GCW: 54600
Quote/DTPO/CO:	QUO-929354-POG6H1
Engine:	2074513 PACCAR PX-9 370@1900 GOV@2100 1250@1200
Transmission:	4052110 Allison 3000 RDS-P Transmission, Gen 5
Rear Axle:	1526155 Meritor MT40-14X Plus 40,000 lb
Rear Tire:	5161070 RR: BR 14ply 11R22.5 M713 Ecopia   Revs/Mile: 499
Operating Conditions:	0% Rolling Resistance

#### Startability

Transmission Ratio	Maximum Starting Grade
3.49	16.83
1.86	8.97

Engine RPM:	700	800	900	1000	1100	1200	1300	1400	1555	1600	1700	1800	1900	2000	2100
Gross Torque:	670	790	875	970	1110	1250	1250	1250	1250	1215	1143	1080	1023	971	926
Net Torque:	585	701	784	875	1008	1140	1142	1143	1145	1113	1047	989	937	890	848
Net HP:	78	107	134	167	211	260	283	305	339	339	339	339	339	339	339

#### Gear Ratios: TRN (1): 3.49 RAX (1): 4.88

Speed (MPH):	4.9	5.6	6.4	7.1	7.8	8.5	9.2	9.9	11.0	11.3	12.0	12.7	13.4	14.1	14.8
Grade (%):	10.2	12.4	14.0	15.7	18.3	20.9	20.9	20.9	21.0	20.3	19.0	17.9	16.9	16.0	15.2

#### Gear Ratios: TRN (2): 1.86 RAX (1): 4.88

Speed (MPH):	9.3	10.6	11.9	13.2	14.6	15.9	17.2	18.5	20.6	21.2	22.5	23.8	25.2	26.5	27.8
Grade (%):	5.1	6.2	7.1	8.0	9.3	10.6	10.6	10.6	10.7	10.3	9.7	9.1	8.6	8.1	7.7

#### Gear Ratios: TRN (3): 1.41 RAX (1): 4.88

Speed (MPH):	12.2	14.0	15.7	17.5	19.2	21.0	22.7	24.5	27.2	28.0	29.7	31.5	33.2	34.9	36.7
Grade (%):	3.7	4.6	5.2	5.9	6.9	7.9	7.9	7.9	7.9	7.7	7.2	6.7	6.3	6.0	5.7

#### Gear Ratios: TRN (4): 1 RAX (1): 4.88

Speed (MPH):	17.2	19.7	22.2	24.6	27.1	29.6	32.0	34.5	38.3	39.4	41.9	44.4	46.8	49.3	51.7
Grade (%):	2.4	3.0	3.5	3.9	4.7	5.4	5.4	5.4	5.4	5.2	4.9	4.6	4.3	4.0	3.8

#### Gear Ratios: TRN (5): 0.75 RAX (1): 4.88

Speed (MPH):	23.0	26.3	29.6	32.9	36.1	39.4	42.7	46.0	51.1	52.6	55.8	59.1	62.4	65.7	69.0
Grade (%):	1.6	2.1	2.4	2.8	3.3	3.8	3.8	3.9	3.9	3.7	3.5	3.2	3.0	2.8	2.7

#### Gear Ratios: TRN (6): 0.65 RAX (1): 4.88

Speed (MPH):	26.5	30.3	34.1	37.9	41.7	45.5	49.3	53.1	58.9	60.7	64.4	68.2	72.0	75.8	79.6
Grade (%):	1.3	1.7	2.0	2.3	2.8	3.2	3.2	3.2	3.3	3.1	2.9	2.7	2.5	2.4	2.2

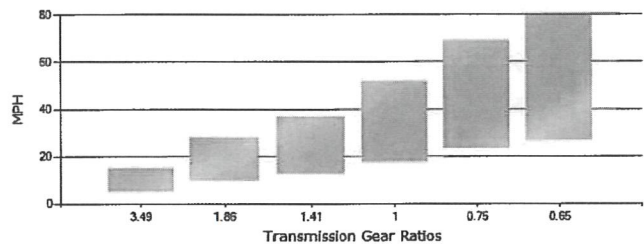
Engine RPM:	700	800	900	1000	1100	1200	1300	1400	1555	1600	1700	1800	1900	2000	2100
Gross Torque:	670	790	875	970	1110	1250	1250	1250	1250	1215	1143	1080	1023	971	926
Net Torque:	585	701	784	875	1008	1140	1142	1143	1145	1113	1047	989	937	890	848
Net HP:	78	107	134	167	211	260	283	305	339	339	339	339	339	339	339



SPEED & GRADE PERFORMANCE REPORTS

Geared Speed Report (Engine Fan Off)

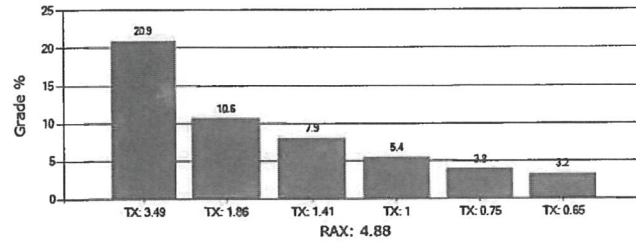
Configuration:	Model 548 / Full Truck GCW: 54600
Quote/DTPO/CO:	QUO-929354-P0G6H1
Engine:	2074513 PACCAR PX-9 370@1900 GOV@2100 1250@1200
Transmission:	4052110 Allison 3000 RDS-P Transmission, Gen 5
Rear Axle:	1526155 Meritor MT40-14X Plus 40,000 lb
Rear Tire:	5161070 RR: BR 14ply 11R22.5 M713 Ecopia   Revs/Mile: 499
Operating Conditions:	0% Rolling Resistance



## SPEED & GRADE PERFORMANCE REPORTS

### Gradability Report (Engine Fan Off)

Configuration: Model 548 / Full Truck GCW: 54600  
 Quote/DTPO/CO: QUO-929354-P0G6H1  
 Engine: 2074513 PACCAR PX-9 370@1900 GOV@2100 1250@1200  
 Transmission: 4052110 Allison 3000 RDS-P Transmission, Gen 5  
 Rear Axle: 1526155 Meritor MT40-14X Plus 40,000 lb  
 Rear Tire: 5161070 RR: BR 14ply 11R22.5 M713 Ecopia | Revs/Mile: 499  
 Operating Conditions: 0% Rolling Resistance



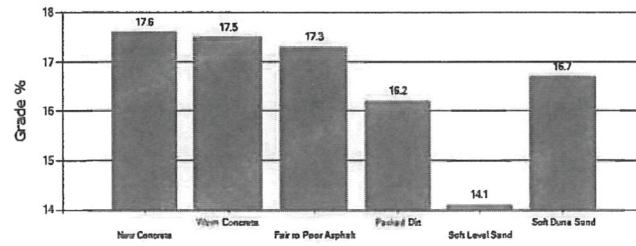
### Gradability Report (Engine Fan Off)

Gear	TX-Ratio	RAX-Ratio	Peak Torque % Gradability	Peak Torque Road Speed (MPH)
1	3.49	4.88	20.89	9.18
2	1.86	4.88	10.63	17.22
3	1.41	4.88	7.87	22.72
4	1.00	4.88	5.37	32.03
5	.75	4.88	3.85	42.71
6	.65	4.88	3.24	49.28

## SPEED & GRADE PERFORMANCE REPORTS

### Startability Report (Engine Fan Off)

Configuration:	Model 548 / Full Truck GCW: 54600
Quota/DTPO/CO:	QUO-929354-P0G6H1
Engine:	2074513 PACCAR PX-9 370@1900 GOV@2100 1250@1200
Transmission:	4052110 Allison 3000 RDS-P Transmission, Gen 5
Rear Axle:	1526155 Meritor MT40-14X Plus 40,000 lb
Rear Tire:	5161070 RR: BR 14ply 11R22.5 M713 Ecopia   Revs/Mile: 499
Operating Conditions:	0% Rolling Resistance







# Quote WTTLLC00013360 Page 1 of 4 Date 9/23/2022

Warren Truck and Trailer, LLC  
15768 US HIGHWAY 271 NORTH  
Talco TX 75487

Phone (888) 734-4400  
Fax (903) 379-4400  
WarrenTruckAndTrailer.com

Bill To	Ship To	Contact
RUSH ENTERPRISES/RUSH TRUCK CENTER RUSH MEDIUM DUTY TRUCKS 4200 IRVING BLVD DALLAS TX 75247	RUSH ENTERPRISES/RUSH TRUCK CENTER RUSH MEDIUM DUTY TRUCKS 4200 IRVING BLVD DALLAS TX 75247	DANIEL AGUIANO (214) 624-9103 Ext. 0000

Purchase Order No.		Customer ID	Salesperson ID	Shipping Method	Payment Terms	Req Ship Date	Master No.	
		RUS401	Chris	DELIVERED	Net30	0/0/0000	10,021,504	
QTY	Item Number	Description				UOM	Unit Price	Ext. Price
1	FL-13	DUMP BODY - FRAMELESS - 13' Q-13360 N RICHLAND HILLS  Yardage: 11/13 Floor Material: 1/4 A1011 Front / Material: 48" 7 GA A1011 Side / Material: 42" 7 GA A1011 4" Structural Crossmembers on 10" Centers Vertical Side Brace: Yes Horizontal Brace: No Hoist / Cylinder: VTLW-63110 Hyd Tank: 30 GAL SIDEMOUNT Doghouse Tank - SMR30S Hydraulics: 85 CC Gear Pump w DIN Shaft Tipping Valve: Chassis Mount						
1	TAILGATE	Air Operated: Yes Panel: 3 Vertical Material: 1/4 A1011 Height: 48 Slope: None Chains: 3/8" Double Acting: Yes High Lift Gate: No Side Swing - Ground Operated: No Center Opening: No Material Gate: None Water Tight: None  LIFTING HOOKS INSTALLED ON TOP EDGE FOR REMOVAL OF GATE.						
1	DB OPTIONS # 1	Cabshield: Variable Width-1/2 (24") Asphalt Apron: 9" BOLT ON Bolt On: Yes Center Board Pockets: No						
1	LIGHTS	Lights/Harness: LED Lights and Standard Harness  Oval STT: (2) Grommet Mount STT Per Post						



# Quote WTTLLC00013360 Page 2 of 4 Date 9/23/2022

Warren Truck and Trailer, LLC  
15768 US HIGHWAY 271 NORTH  
Talco TX 75487

Phone (888) 734-4400  
Fax (903) 379-4400  
WarrenTruckAndTrailer.com

Purchase Order No.		Customer ID	Salesperson ID	Shipping Method	Payment Terms	Req Ship Date	Master No.
		RUS401	Chris	DELIVERED	Net30	0/0/0000	10,021,504
QTY	Item Number	Description	UOM	Unit Price	Ext. Price		
1	DB OPTIONS # 2	LIFTING HOOKS (D-RINGS) INSTALLED TOP EDGE OF TAILGATE FOR REMOVAL OF GATE.					
1	BODY LADDER	FIXED GRIP STRUT LADDER D/S FRONT PANEL  (3) RUNGS ON BODY (2) RUNGS BELOW BODY (2) STEPS INSIDE BODY					
1	INSTALL	Hydraulic Hoses/Fittings: Yes Pump: 85 CC Gear Pump w DIN Shaft Console: Clutch Shift Air - Use PTO Switch if Provided Conspicuity Tape: No Mudflaps and Brackets: Yes Chrome Turnouts: No Splash/Gravel Guards: Yes Side Boards: 2x6 - Channel Smooth Side Out Covers: No Wires in Conduit No Delivery Fuel/Charges: Yes  Misc Mounting Notes: 2X6 CHANNEL BOARDS - SMOOTH SIDE OUT - STITCH WELDED THE ENTIRE LENGTH.					
1	PAINT	Color: Warren Black (800-80007)					
1	PTO	POWER TAKE OFF PTO Muncie MC1 Series (Auto) ALLISON AUTOMATIC  Note: Not following OEM maintenance can result in non warrantable failure. Check for leaks and loose mounting hardware within first week of use. Recheck at regular maintenance periods (see OEM manual for intervals).					
1	POWER AND BEYOND	POWER AND BEYOND SPREADER CONTROLS FURNISHED & INSTALLED TO OPERATE MONROE MSV-144-84-50 V-BOX SAND SPREADER.  HYDRAULICS PLUMBED THROUGH PINTLE PLATE (2) PRESSURE					



# Quote WTTLLC00013360

Page 3 of 4  
Date 9/23/2022

Warren Truck and Trailer, LLC  
15768 US HIGHWAY 271 NORTH  
Talco TX 75487

Phone (888) 734-4400  
Fax (903) 379-4400  
WarrenTruckAndTrailer.com

Purchase Order No.		Customer ID	Salesperson ID	Shipping Method	Payment Terms	Req Ship Date	Master No.
		RUS401	Chris	DELIVERED	Net30	0/0/0000	10,021,504
QTY	Item Number	Description	UOM	Unit Price	Ext. Price		
		(1) RETURN QUICK CONNECTS INSTALLED ON 45 DEGREE ELBOWS (CENTERED TOP OF PLATE) WITH DUST CAPS. 30 GAL SIDE MOUNT TANK 10 MICRON RETURN LINE FILTER					
1	TARP SYSTEM	TARP system - installed Installation: Installed Brand: Donovan - 5000XL - GROUND LEVEL CRANK W/ CHAIN GUARD Manual / Electric: Manual Type: Arm Aluminum / Steel: Steel Arms Bent Arm: Yes Tarp Size: 90"x18" Tarp Type: Mesh Side Flaps: No  Ground Level Crank W/ Chain Guard.					
1	TOW PACKAGE	Pintle Plate: 3/4" Pintle Hitch: 15 Ton Swivel - BUYERS - BP100A Glad Hands: No D Rings: Yes Tow Hooks: No Electric Plug: 7 Way RV - TOP EDGE OF PLATE Pup Rigging: No  (2) ROUND STT/REVERS SURFACE MOUNT COMBO LIGHTS MOUNTED ON PLATE L & R SIDES - MAXIMA M85417R  SINGE EYELET ABOVE HITCH FOR TRAILER "BREAK AWAY CABLE"  12V ELECTRIC BRAKE CONTROLLER WIRED TO 7 WAY RV PLUG  CAP GLAD HAND AIR LINES AT END OF FRAME.					
1	DELIVERY	DELIVER COMPLETED UNIT(S) TO RUSH PETERBILT DALLAS - IRVING BLVD.  DELIVERY AND FUEL CHARGES SHOWN BELOW (\$400.00/UNIT)					