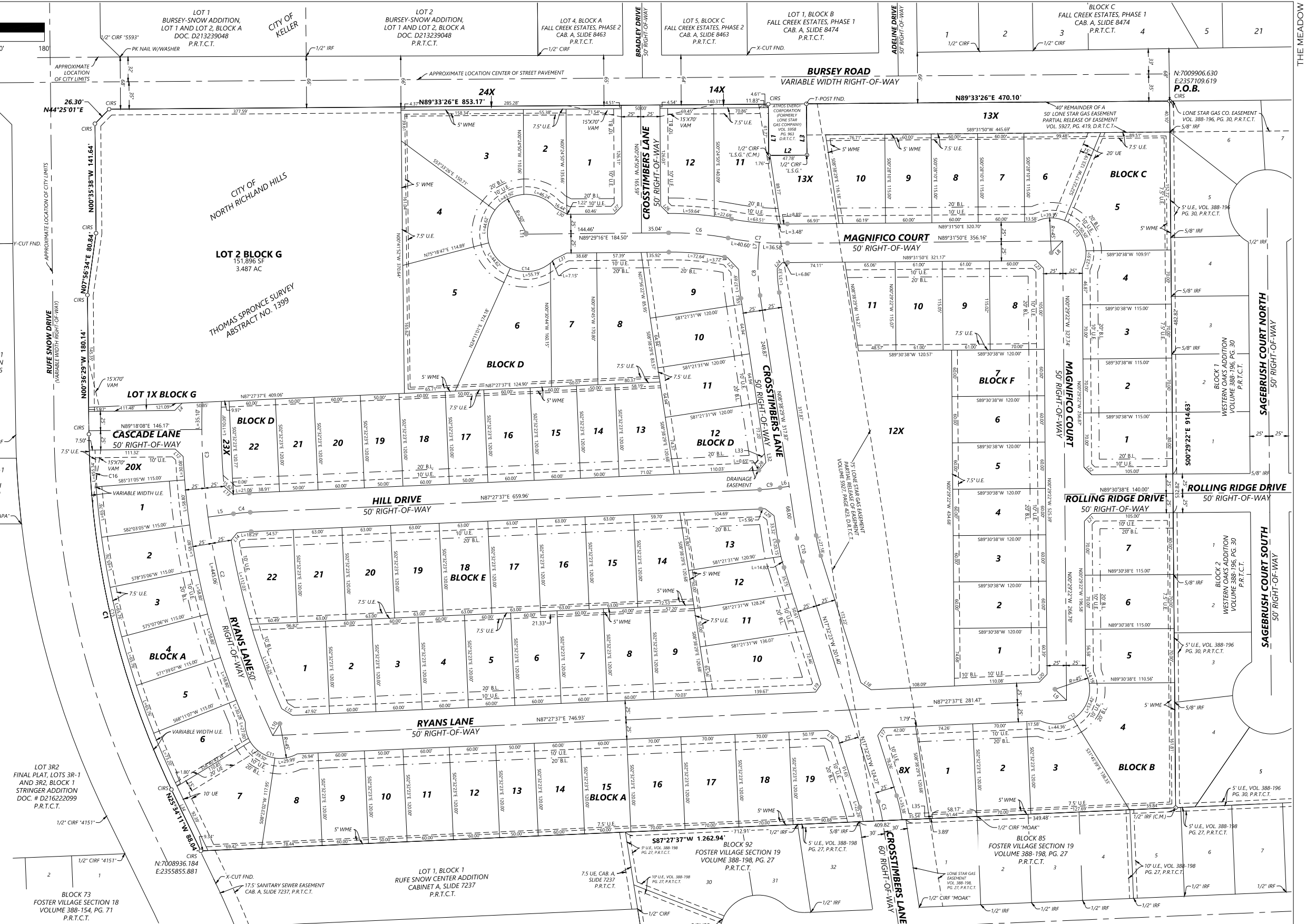


Line #	Length	Direction	Line #	Length	Direction
L1	66.38'	S00°24'01"E	L19	12.18'	S34°57'37"W
L2	49.54'	N89°35'59"E	L20	14.39'	N43°29'07"E
L3	66.42'	N00°36'58"W	L21	14.14'	S44°30'39"W
L4	13.31'	S45°12'47"W	L22	14.14'	N45°29'42"E
L5	33.21'	N82°27'51"E	L23	14.14'	S45°29'46"E
L6	11.68'	N81°21'31"E	L24	10.04'	S41°14'39"W
L7	10.56'	N04°46'15"E	L25	21.03'	S43°21'26"E
L8	21.10'	S44°14'01"W	L26	14.13'	S45°27'47"E
L9	20.82'	N46°27'04"W	L27	14.15'	S44°32'13"W
L10	18.03'	N31°09'23"E	L28	13.37'	N39°24'34"E
L11	1.33'	S00°30'44"E	L29	14.61'	S51°43'55"E
L12	14.35'	N46°33'20"W	L30	17.66'	S62°30'40"E
L13	15.68'	N49°03'05"W	L31	17.94'	S63°14'38"W
L14	12.29'	N39°04'41"E	L32	11.51'	S08°38'29"E
L15	16.54'	N58°19'37"W	L33	30.25'	N42°27'37"E
L16	15.87'	S55°02'23"E	L34	94.19'	N25°40'24"W
L17	12.18'	N34°57'37"E	L35	5.04'	S09°37'47"E
L18	15.87'	S55°02'23"E			

Curve #	Length	Radius	Delta	Chord Bearing	Chord Length
C1	475.92'	1,092.68'	024°57'20"	N 13°04'36" W	472.17'
C2	296.06'	946.84'	017°54'56"	S 16°29'37" E	294.86'
C3	149.00'	946.84'	009°00'59"	S 3°10'39" E	148.85'
C4	21.80'	250.00'	004°59'45"	N 84°57'44" E	21.79'
C5	28.82'	200.00'	008°15'28"	N 13°24'39" W	28.80'
C6	77.49'	400.00'	011°05'57"	S 84°57'45" E	77.37'
C7	77.19'	400.00'	011°09'23"	S 84°56'28" E	77.07'
C8	58.52'	250.00'	013°24'44"	N 1°56'07" W	58.39'
C9	26.62'	250.00'	006°06'06"	N 84°24'34" E	26.61'
C10	31.06'	200.00'	008°53'54"	N 13°05'26" W	31.03'
C11	96.49'	45.00'	122°51'28"	S 58°22'37" E	79.04'
C12	111.97'	45.00'	142°34'15"	N 43°26'27" E	85.24'
C13	113.82'	45.00'	144°55'27"	N 45°16'24" W	85.82'
C14	241.74'	50.00'	277°00'44"	S 11°44'42" W	66.25'
C15	401.98'	1,086.84'	021°11'29"	N 15°04'40" W	399.69'
C16	47.61'	1,085.18'	002°30'49"	S 2°56'30" E	47.60'

Lot #	SF	Acres	Lot #	SF	Acres
Block A Lot 1	7,162	0.164	Block C Lot 7	6,900	0.158
Block A Lot 2	7,162	0.164	Block C Lot 8	6,900	0.158
Block A Lot 3	7,162	0.164	Block C Lot 9	6,900	0.158
Block A Lot 4	7,162	0.164	Block C Lot 10	7,872	0.181
Block A Lot 5	7,162	0.164	Block C Lot 11	11,044	0.254
Block A Lot 6	7,431	0.171	Block C Lot 12	9,476	0.218
Block A Lot 7	11,830	0.272	Block C Lot 13X	26,320	0.604
Block A Lot 8	7,915	0.182	Block C Lot 14X	641	0.015
Block A Lot 9	7,200	0.165	Block C Lot 15	9,692	0.222
Block A Lot 10	6,000	0.138	Block D Lot 2	6,619	0.152
Block A Lot 11	7,200	0.165	Block D Lot 3	14,602	0.335
Block A Lot 12	7,200	0.165	Block D Lot 4	11,768	0.270
Block A Lot 13	6,000	0.138	Block D Lot 5	18,713	0.430
Block A Lot 14	7,200	0.165	Block D Lot 6	13,620	0.313
Block A Lot 15	7,200	0.165	Block D Lot 7	10,198	0.234
Block A Lot 16	8,400	0.193	Block D Lot 8	11,635	0.267
Block A Lot 17	8,400	0.193	Block D Lot 9	8,973	0.206
Block A Lot 18	8,400	0.193	Block D Lot 10	7,793	0.179
Block A Lot 19	9,093	0.209	Block D Lot 11	7,793	0.179
Block A Lot 20X	9,110	0.209	Block D Lot 12	9,644	0.221
Block B Lot 1	8,142	0.187	Block D Lot 13	7,752	0.178
Block B Lot 2	8,400	0.193	Block D Lot 14	6,000	0.138
Block B Lot 3	11,157	0.256	Block D Lot 15	7,200	0.165
Block B Lot 4	16,525	0.379	Block D Lot 16	7,200	0.165
Block B Lot 5	8,015	0.184	Block D Lot 17	6,000	0.138
Block B Lot 6	8,050	0.185	Block D Lot 18	7,200	0.165
Block B Lot 7	9,150	0.210	Block D Lot 19	6,000	0.138
Block B Lot 8X	5,065	0.116	Block D Lot 20	7,200	0.165
Block C Lot 1	9,150	0.210	Block D Lot 21	6,000	0.138
Block C Lot 2	8,050	0.185	Block D Lot 22	7,206	0.165
Block C Lot 3	8,050	0.185	Block D Lot 23X	1,354	0.031
Block C Lot 4	7,966	0.183	Block D Lot 24X	1,266	0.029
Block C Lot 5	17,502	0.402	Block E Lot 1	9,420	0.216
Block C Lot 6	8,518	0.196	Block E Lot 2	7,200	0.165
Block D Lot 1X	841	0.019			

Lot #	SF	Acres	Lot #	SF	Acres
Block E Lot 3	7,200	0.165	Block F Lot 1	8,654	0.199
Block E Lot 4	7,200	0.165	Block F Lot 2	7,200	0.165
Block E Lot 5	7,200	0.165	Block F Lot 3	7,200	0.165
Block E Lot 6	7,200	0.165	Block F Lot 4	7,200	0.165
Block E Lot 7	7,200	0.165	Block F Lot 5	7,200	0.165
Block E Lot 8	7,200	0.165	Block F Lot 6	7,200	0.165
Block E Lot 9	7,200	0.165	Block F Lot 7	7,200	0.165
Block E Lot 10	10,373	0.238	Block F Lot 8	8,001	0.184
Block E Lot 11	6,608	0.152	Block F Lot 9	7,017	0.161
Block E Lot 12	6,219	0.143	Block F Lot 10	7,018	0.161
Block E Lot 13	8,286	0.190	Block F Lot 11	6,538	0.150
Block E Lot 14	7,934	0.182	Block F Lot 12X	86,257	1.980
Block E Lot 15	7,560	0.174	Block G Lot 1X	841	0.019
Block E Lot 16	7,560	0.174			
Block E Lot 17	7,560	0.174			
Block E Lot 18	7,560	0.174			
Block E Lot 19	7,560	0.174			
Block E Lot 20	7,560	0.174			
Block E Lot 21	7,560	0.174			
Block E Lot 22	8,671	0.199			
Block E Lot 23	7,560	0.174			
Block E Lot 24	7,560	0.174			
Block E Lot 25	7,560	0.174			
Block E Lot 26	7,560	0.174			
Block E Lot 27	7,560	0.174			
Block E Lot 28	7,560	0.174			
Block E Lot 29	7,560	0.174			
Block E Lot 30	7,560	0.174			
Block E Lot 31	7,560	0.174			
Block E Lot 32	7,560	0.174			
Block E Lot 33	7,560	0.174			
Block E Lot 34	7,560	0.174			
Block E Lot 35	7,560	0.174			
Block E Lot 36	7,560	0.174			
Block E Lot 37	7,560	0.174			
Block E Lot 38	7,560	0.174			
Block E Lot 39	7,560	0.174			
Block E Lot 40	7,560	0.174			
Block E Lot 41	7,560	0.174			
Block E Lot 42	7,560	0.174			
Block E Lot 43	7,560	0.174			
Block E Lot 44	7,560	0.174			
Block E Lot 45	7,560	0.174			
Block E Lot 46	7,560	0.174			
Block E Lot 47	7,560	0.174			
Block E Lot 48	7,560	0.174			
Block E Lot 49	7,560	0.174			
Block E Lot 50	7,560	0.174			
Block E Lot 51	7,560	0.174			
Block E Lot 52	7,560	0.174			
Block E Lot 53	7,560	0.174			
Block E Lot 54	7,560	0.174			
Block E Lot 55	7,560	0.174			
Block E Lot 56	7,560	0.174			
Block E Lot 57	7,560	0.174			
Block E Lot 58	7,560	0.174			
Block E Lot 59	7,560	0.174			
Block E Lot 60	7,560	0.174			
Block E Lot 61	7,560	0.174			
Block E Lot 62	7,560	0.174			
Block E Lot 63	7,560	0.174			
Block E Lot 64	7,560	0.174			
Block E Lot 65	7,560	0.174			
Block E Lot 66	7,560	0.174			
Block E Lot 67	7,560	0.174			
Block E Lot 68	7,560	0.174			
Block E Lot 69	7,560	0.174			
Block E Lot 70	7,560	0.174			
Block E Lot 71	7,560	0.174			
Block E Lot 72	7,560	0.174			
Block E Lot 73	7,560	0.174			
Block E Lot 74	7,560	0.174			
Block E Lot 75	7,560	0.174			
Block E Lot 76	7,560	0.174			
Block E Lot 77	7,560	0.174			
Block E Lot 78	7,560	0.174			
Block E Lot 79	7,560	0.174			
Block E Lot 80	7,560	0.174			
Block E Lot 81	7,560	0.174			
Block E Lot 82	7,560	0.174			
Block E Lot 83	7,560	0.174			
Block E Lot 84	7,560	0.174			
Block E Lot 85	7,560	0.174			
Block E Lot 86	7,560	0.174			
Block E Lot 87	7,560	0.174			
Block E Lot 88	7,560	0.174			
Block E Lot 89	7,560	0.174			
Block E Lot 90	7,560	0.174			
Block E Lot 91	7,560	0.174			
Block E Lot 92	7,560	0.174			
Block E Lot 93	7,560	0.174			
Block E Lot 94	7,560	0.174			
Block E Lot 95	7,560	0.174			
Block E Lot 96	7,560	0.174			
Block E Lot 97	7,560	0.174			
Block E Lot 98	7,560	0.174			
Block E Lot 99	7,560	0.174			
Block E Lot 100	7,560	0.174			



LEGEND

CIRS 1/2" IRON ROD WITH YELLOW CAP STAMPED
 CIRF "WESTWOOD PS" FOUND
 (CM) CAPED IRON ROD FOUND
 DE VOL. PG. CONTROLLING MONUMENT
 CAB. PLAT RECORDS, TARRANT COUNTY, TEXAS
 D.R.T.C.T. DEED RECORDS, TARRANT COUNTY, TEXAS
 O.P.R.T.C.T. OFFICIAL PUBLIC RECORDS, COLLIN COUNTY, TEXAS
 P.O.B. POINT OF BEGINNING
 B.L. BUILDING LINE
 U.E. UTILITY EASEMENT
 R.O.W. RIGHT-OF-WAY
 W.M.E. WALL MAINTENANCE EASEMENT

- SURVEYOR NOTES:**
- COORDINATES SHOWN ARE TEXAS STATE PLANE COORDINATE SYSTEM, NORTH CENTRAL ZONE, NORTH AMERICAN DATUM OF 1983 ON GRID COORDINATE VALUES, NO SCALE AND NO PROJECTION.
 - ALL INTERIOR LOT CORNERS ARE MONUMENTED WITH A 1/2 INCH IRON ROD SET WITH A YELLOW PLASTIC CAP STAMPED "WESTWOOD PS" UNLESS OTHERWISE NOTED.
 - BEARING SYSTEM FOR THIS SURVEY IS BASED ON GRID NORTH STATE PLANE COORDINATES OF THE TEXAS COORDINATE SYSTEM (NAD83) (CORSS96) TEXAS NORTH CENTRAL ZONE (4202), NAVD88.
 - SELLING A PORTION OF THIS ADDITION BY METES AND BOUNDS IS A VIOLATION OF CITY ORDINANCE AND STATE LAW AND IS SUBJECT TO FINES AND WITHHOLDING OF UTILITY AND BUILDING PERMITS.
 - ABOVE GROUND FRANCHISE UTILITY APPURTENANCES ARE NOT ALLOWED IN THE FRONTS OF THE PROPERTIES.
 - THE EASEMENTS INDICATED ON THIS PLAT ARE FOR THE PURPOSE OF CONSTRUCTING, USING, AND MAINTAINING PUBLIC UTILITIES INCLUDING UNDERGROUND CONDUITS, MANHOLES, PIPES, VALVES, POSTS, ABOVE GROUND CABLES, WIRES, OR COMBINATIONS THEREOF, TOGETHER WITH THE RIGHT OF INGRESS AND EGRESS TO OPERATE AND MAINTAIN THE PUBLIC UTILITIES.

OWNER
 SJR NRH REALTY LP
 2900 N FITZHUGH AVE STE 200
 DALLAS, TX 75204
ENGINEER / SURVEYOR
Westwood
 Phone (214) 473-4640 2901 Dallas Parkway, Suite 400
 Toll Free (888) 937-6150 Plano, TX 75083
 westwood.com
 Westwood Professional Services, Inc.
 TYPE 158M REGISTRATION NO. 1-11535
 1593-LPBM REGISTRATION NO. 1-1406101

FINAL PLAT
 LOTS 1-19, 20X, BLOCK A; LOTS 1-7, 8X, BLOCK B;
 LOTS 1-12, 13X, BLOCK C; LOTS 1-22, 23X-24X,
 BLOCK D; LOTS 1-22, BLOCK E;
 LOTS 1-11, 12X, BLOCK F; & LOTS 1X AND 2, BLOCK G
 THE MEADOW
 BEING 29.553 ACRES OF LAND LOCATED IN THE
 THOMAS SPRONCE SURVEY, ABSTRACT NO. 1399 AN
 ADDITION TO THE CITY OF NORTH RICHLAND HILLS
 TARRANT COUNTY, TEXAS
 CASE PLAT 24-0060
 29.553 ACRES SEPTEMBER 5, 2024 JOB NO. 000210.02 THE MEADOW

