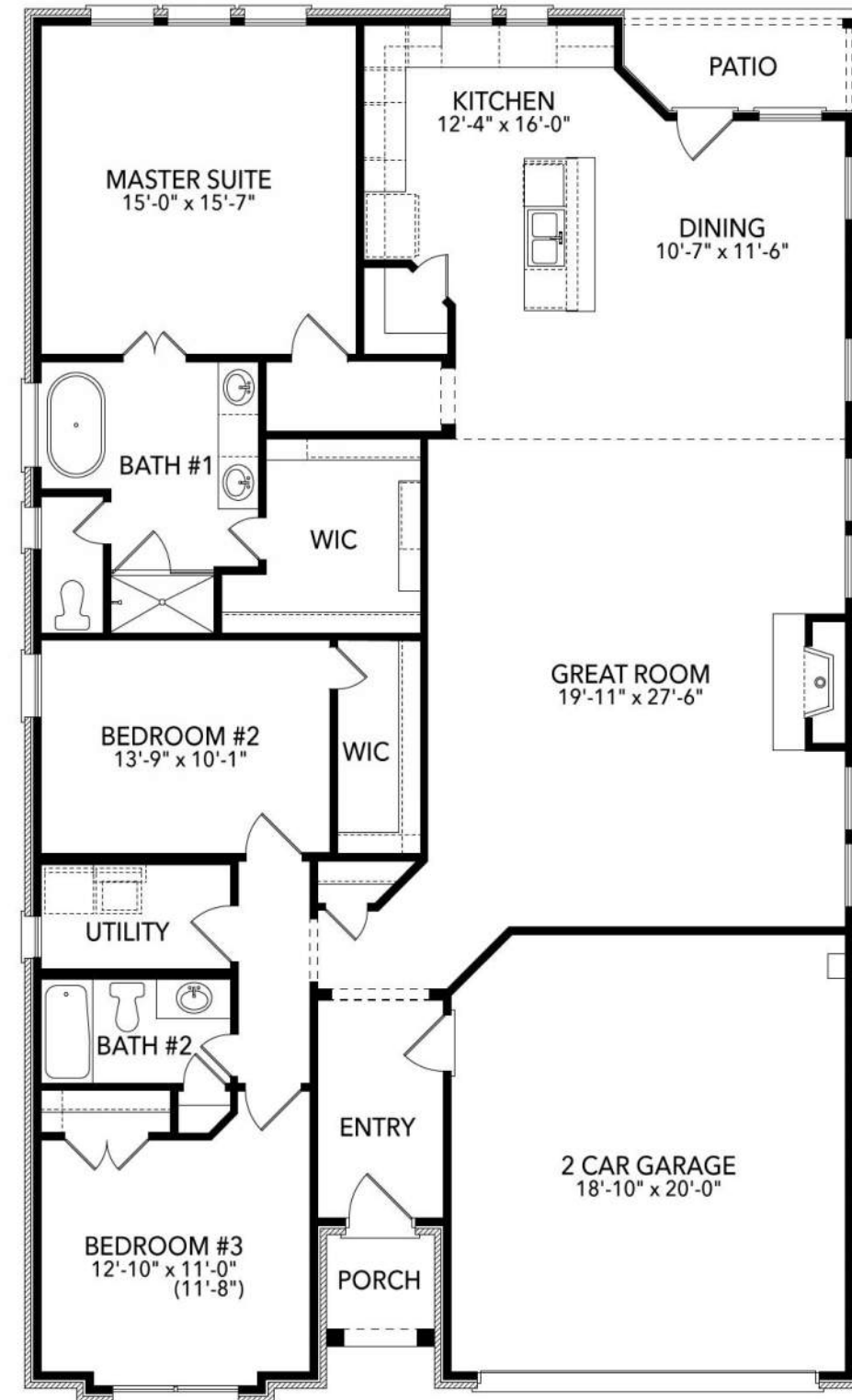


The Ashstone

Single Story Home | 2134 sq ft | 3 Bedrooms | 2 Bathrooms

The Ashstone

2134 sq ft



All discounts and/or incentives are subject to credit approval and use of builder's preferred lender and title company. Floorplans and renderings are artist's conceptions. Dimensions are approximate. Floor plans, room sizes, exteriors, and standard features may vary. Sandlin Homes reserves the right to modify the plan and specifications without notice or obligation. Copyright 2017 Sandlin Homes - All Rights Reserved



The Brimstone

Single Story Home | 2061 sq ft | 3-4 Bedrooms | 2 Bathrooms

The Brimstone

2061 sq ft



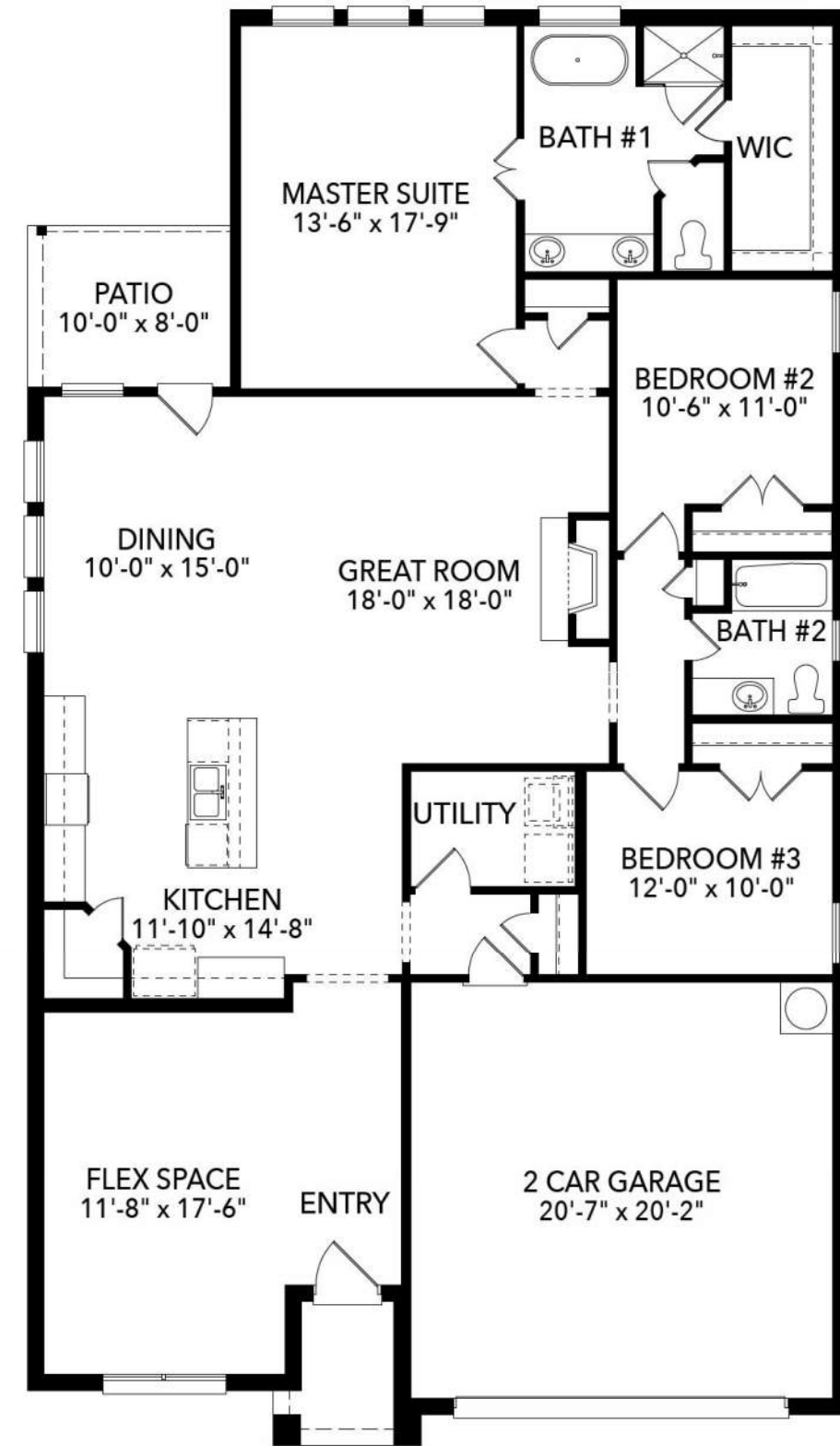
Elevation A



Elevation B



Elevation C



All discounts and/or incentives are subject to credit approval and use of builder's preferred lender and title company. Floorplans and renderings are artist's conceptions. Dimensions are approximate. Floor plans, room sizes, exteriors, and standard features may vary. Sandlin Homes reserves the right to modify the plan and specifications without notice or obligation. Copyright 2017 Sandlin Homes - All Rights Reserved



The Brookstone II

Two Story Home | 2,525 sq ft | 3-5 Bedrooms | 2-4 Bathrooms



The Brookstone II

2525 sq ft



Elevation A

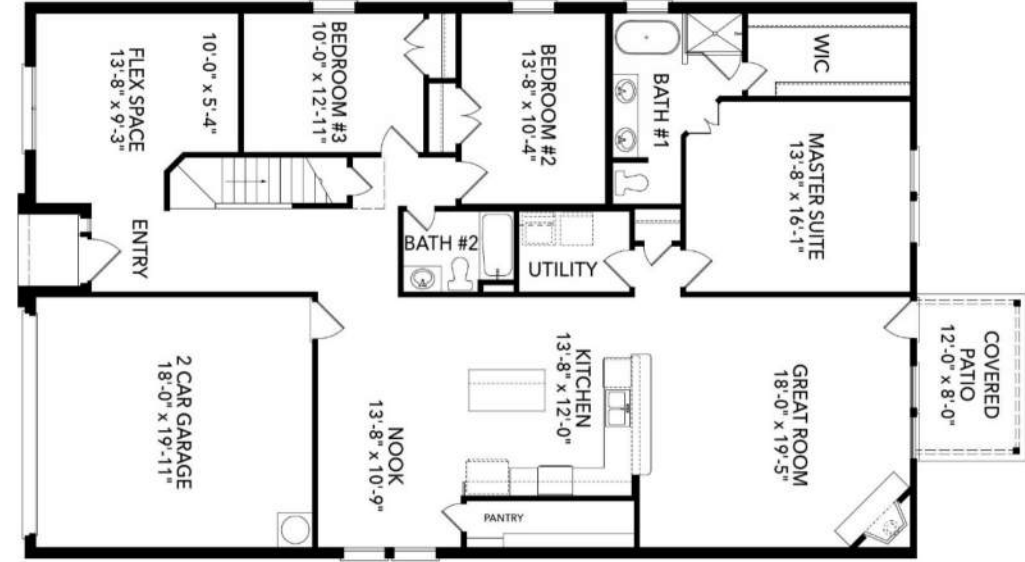


Elevation B

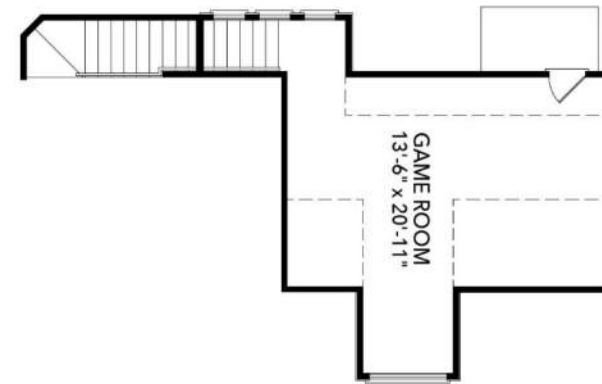


Elevation C

First Floor



Second Floor



All discounts and/or incentives are subject to credit approval and use of builder's preferred lender and title company. Floorplans and renderings are artist's conceptions. Dimensions are approximate. Floor plans, room sizes, exteriors, and standard features may vary. Sandlin Homes reserves the right to modify the plan and specifications without notice or obligation. Copyright 2017 Sandlin Homes - All Rights Reserved



The Brookstone I - ABC

Single Story Home | 2163 sq ft | 3-4 Bedrooms | 2-3 Bathrooms

The Brookstone I - ABC

2163 sq ft



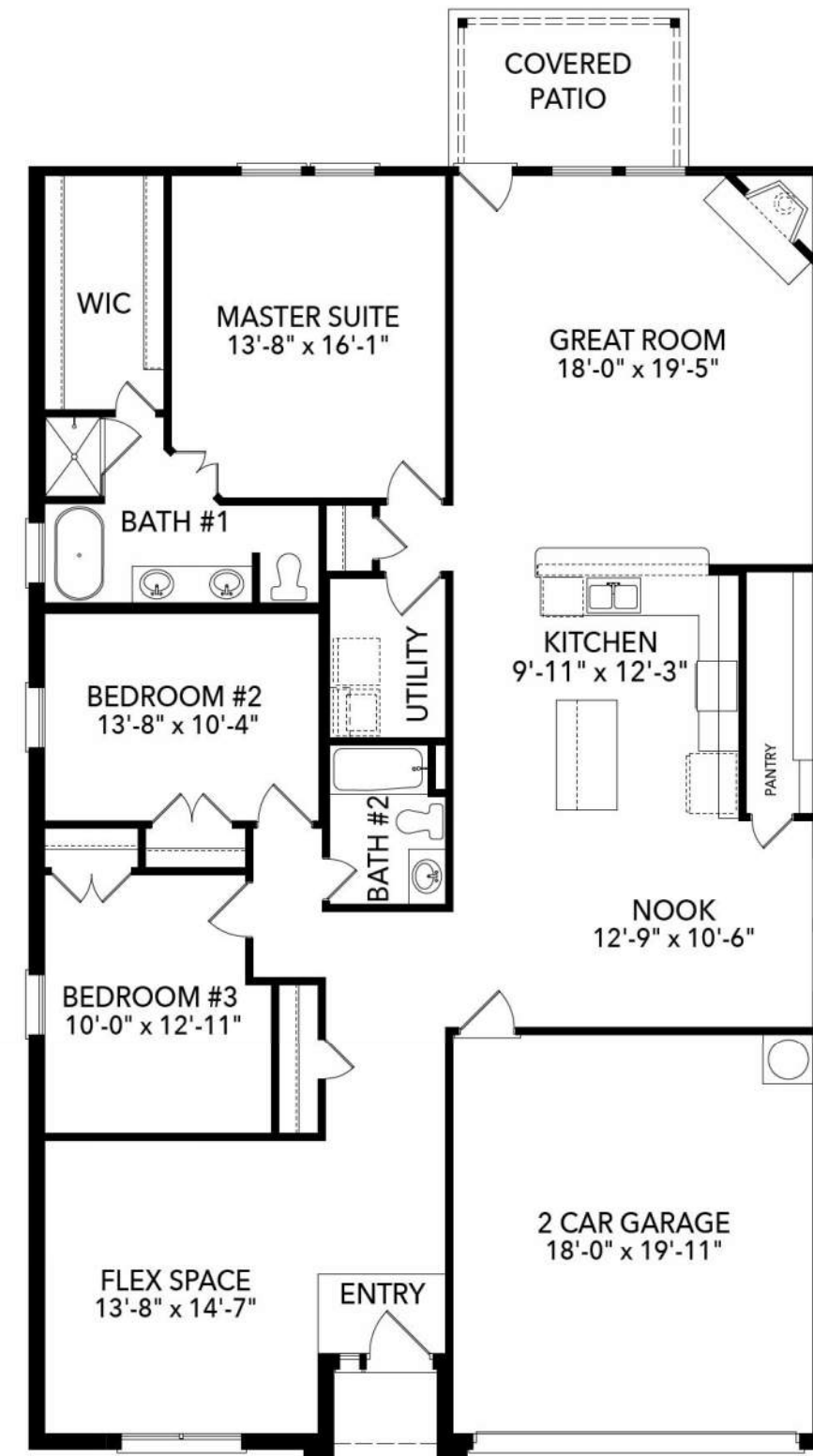
Elevation A



Elevation B



Elevation C



The Brookstone I - DEF

Single Story Home | 2163 sq ft | 3-4 Bedrooms | 2-3 Bathrooms

The Brookstone I - DEF

2163 sq ft



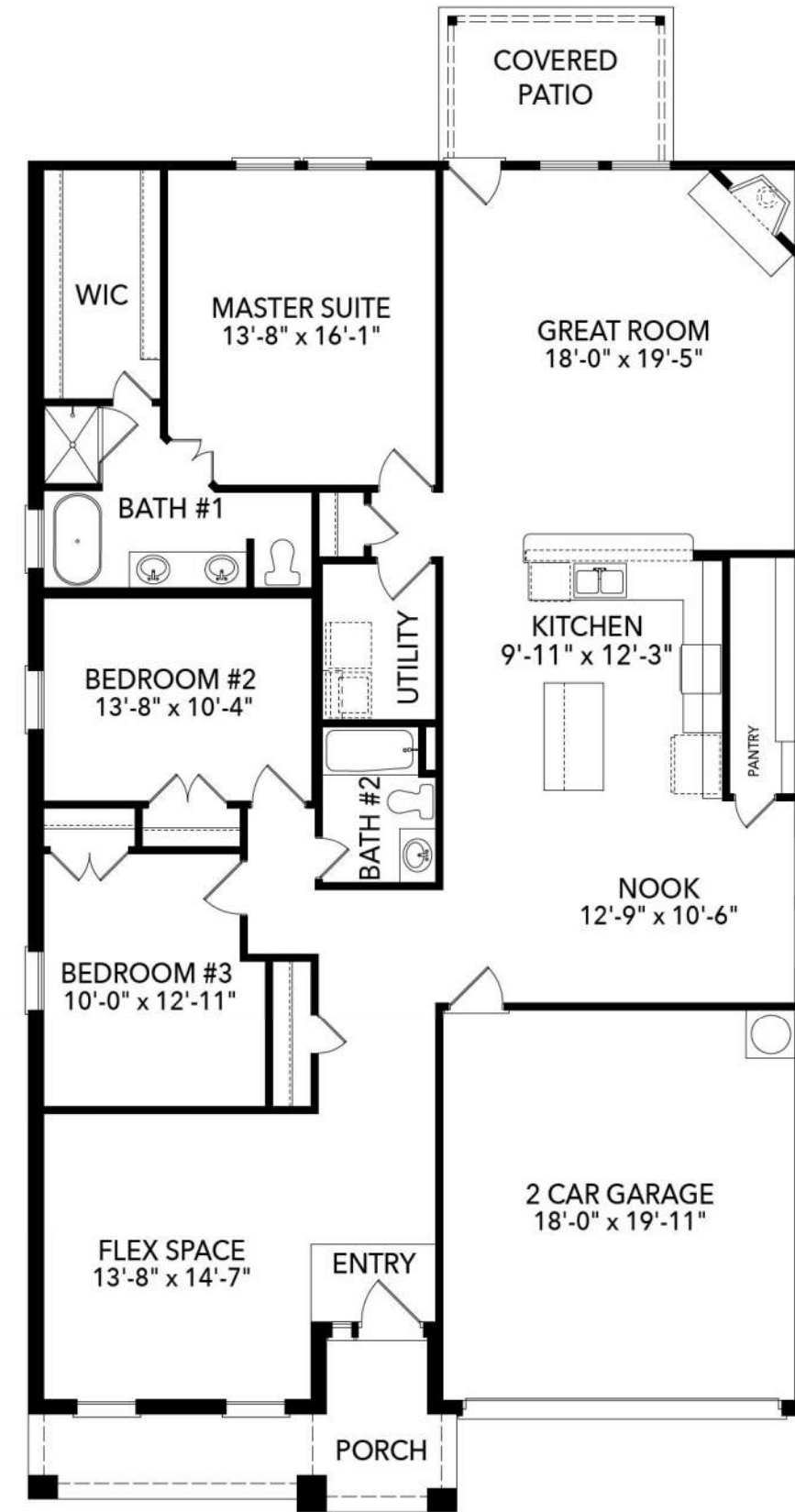
Elevation D



Elevation E



Elevation F



All discounts and/or incentives are subject to credit approval and use of builder's preferred lender and title company. Floorplans and renderings are artist's conceptions. Dimensions are approximate. Floor plans, room sizes, exteriors, and standard features may vary. Sandlin Homes reserves the right to modify the plan and specifications without notice or obligation. Copyright 2017 Sandlin Homes - All Rights Reserved



The Chessel

Two Story Home | 3,225 sq ft | 4-5 Bedrooms | 3.5 Bathrooms



The Chessel

3,225 sq ft

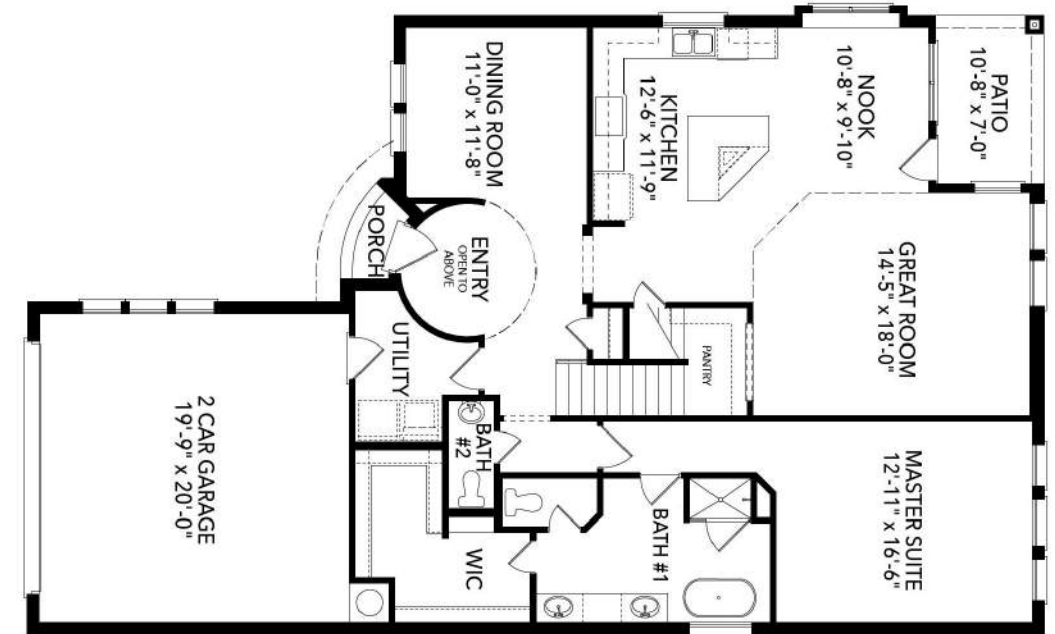


Elevation D

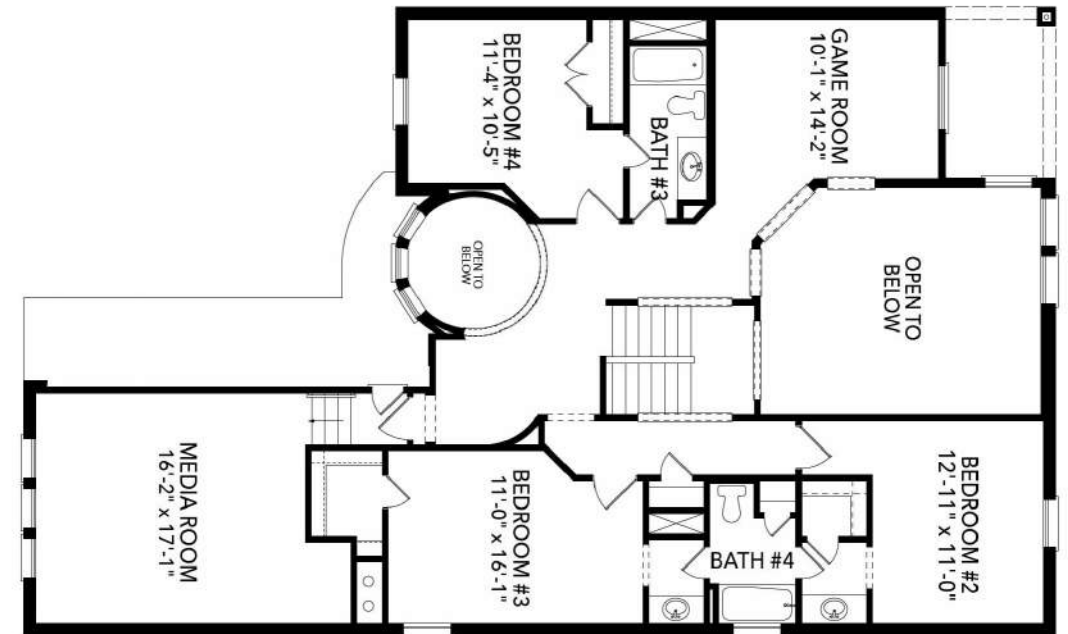


Elevation F

First Floor



Second Floor



All discounts and/or incentives are subject to credit approval and use of builder's preferred lender and title company. Floorplans and renderings are artist's conceptions. Dimensions are approximate. Floor plans, room sizes, exteriors, and standard features may vary. Sandlin Homes reserves the right to modify the plan and specifications without notice or obligation. Copyright 2017 Sandlin Homes - All Rights Reserved



The Chessel JS

Two Story Home | 3240 sq ft | 4-5 Bedrooms | 3.5 Bathrooms



The Chessel JS

3,240 sq ft



Elevation B



Elevation C

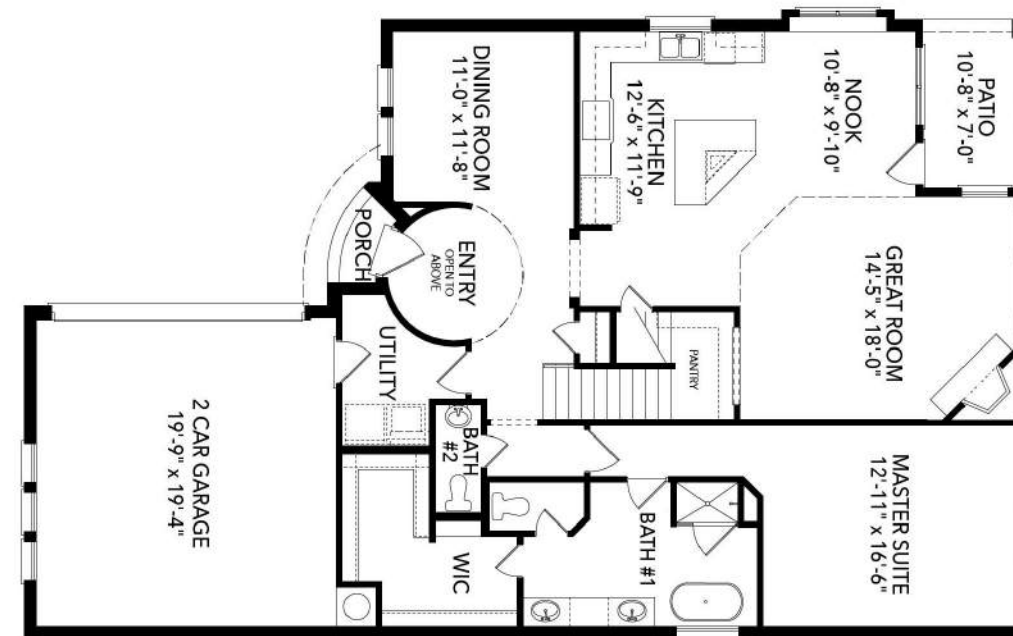


Elevation G

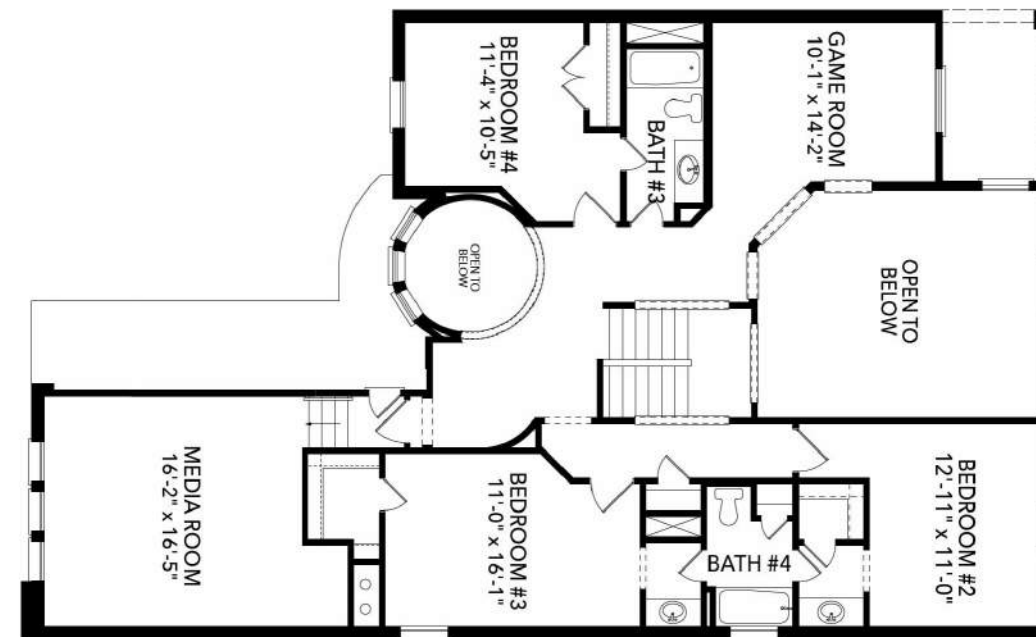


Elevation H

First Floor



Second Floor



All discounts and/or incentives are subject to credit approval and use of builder's preferred lender and title company. Floor-plans and renderings are artist's conceptions. Dimensions are approximate. Floor plans, room sizes, exteriors, and standard features may vary. Sandlin Homes reserves the right to modify the plan and specifications without notice or obligation. Copyright 2017 Sandlin Homes - All Rights Reserved



The Dublin

Two Story Home | 3813 sq ft | 4 Bedrooms | 3.5 Bathrooms



The Dublin

3813 sq ft



Elevation A



Elevation B



Elevation C



Elevation D

First Floor



Second Floor



All discounts and/or incentives are subject to credit approval and use of builder's preferred lender and title company. Floorplans and renderings are artist's conceptions. Dimensions are approximate. Floor plans, room sizes, exteriors, and standard features may vary. Sandlin Homes reserves the right to modify the plan and specifications without notice or obligation. Copyright 2017 Sandlin Homes - All Rights Reserved



The Monte Carlo

Two Story Home | 3823 sq ft | 4-5 Bedrooms | 3.5-4 Bathrooms



The Monte Carlo

3823 sq ft



Elevation A



Elevation C

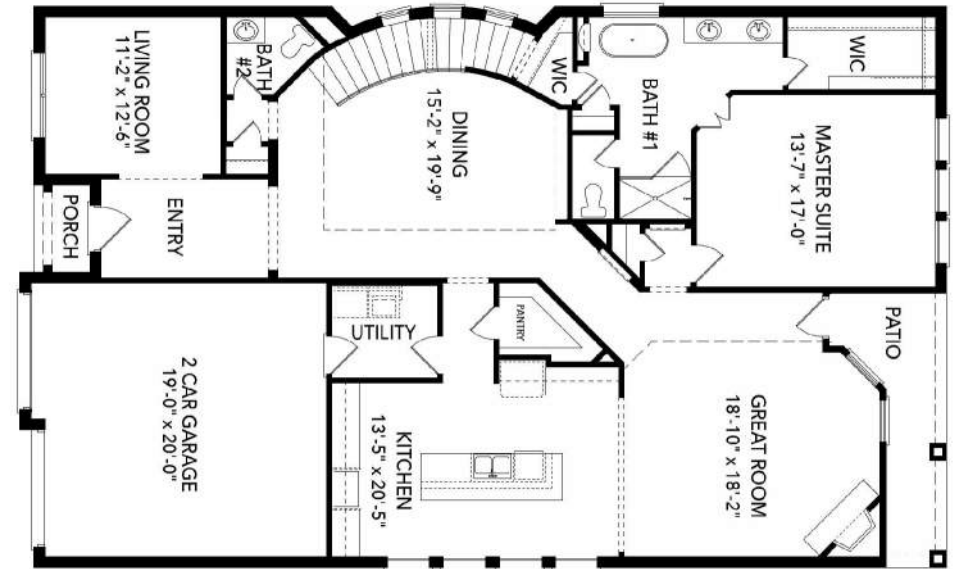


Elevation F



Elevation G

First Floor



Second Floor



All discounts and/or incentives are subject to credit approval and use of builder's preferred lender and title company. Floorplans and renderings are artist's conceptions. Dimensions are approximate. Floor plans, room sizes, exteriors, and standard features may vary. Sandlin Homes reserves the right to modify the plan and specifications without notice or obligation. Copyright 2017 Sandlin Homes - All Rights Reserved



The Murray

Two Story Home | 3,048 sq ft | 3-4 Bedrooms | 2.5 Bathrooms



The Murray

3,048 sq ft



Elevation A



Elevation B



Elevation D

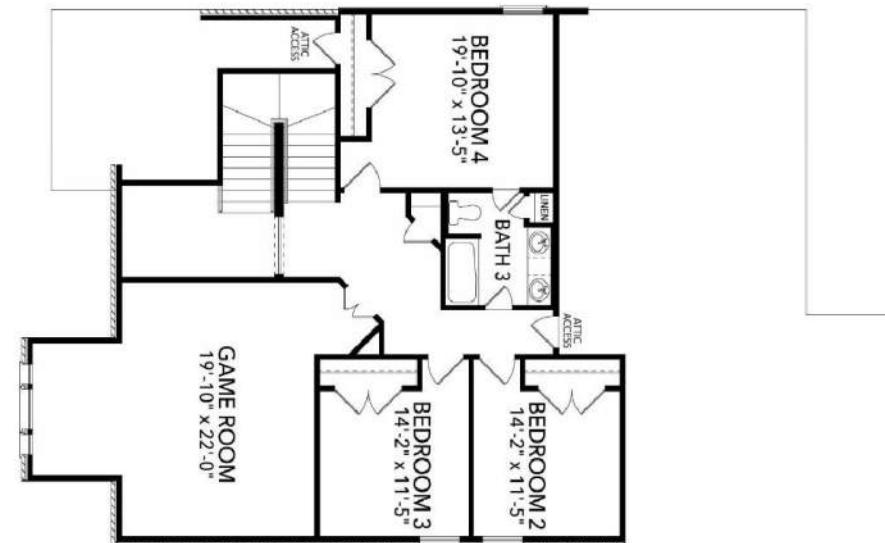


Elevation F

First Floor



Second Floor



All discounts and/or incentives are subject to credit approval and use of builder's preferred lender and title company. Floorplans and renderings are artist's conceptions. Dimensions are approximate. Floor plans, room sizes, exteriors, and standard features may vary. Sandlin Homes reserves the right to modify the plan and specifications without notice or obligation. Copyright 2017 Sandlin Homes - All Rights Reserved



The Silverstone

Two Story Home | 2,979 sq ft | 3-6 Bedrooms | 2.5-4 Bathrooms



Elevation A



Elevation D

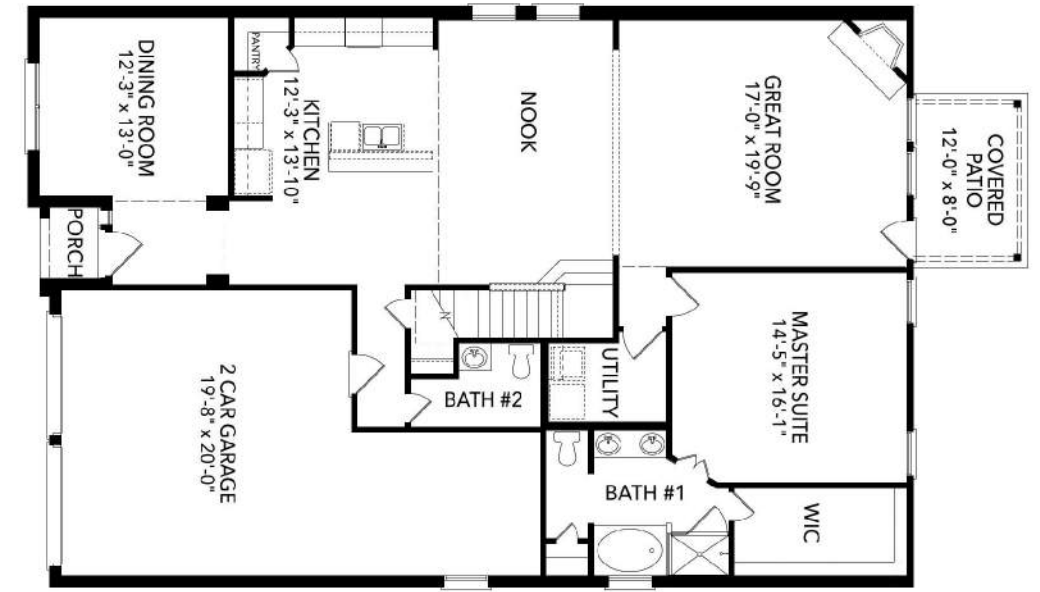


Elevation F



Elevation G

First Floor



Second Floor

