

**LEGEND**

- PL PROPERTY LINE
- PROPERTY SETBACK/BUFFER
- UTILITY EASEMENT
- S SANITARY SEWER LINE
- ST STORM SEWER LINE
- OHE OVERHEAD ELECTRIC LINE
- UE UNDERGROUND ELECTRIC LINE
- G GAS LINE
- W WATER LINE
- C COMMUNICATIONS LINE
- FO FIBER OPTIC LINE
- IRON PIN FOUND
- IRON PIN SET
- ✕ CUT CROSS
- △ CONTROL POINT
- ⊕ BENCHMARK
- ⊙ SANITARY SEWER MANHOLE
- ⊖ SANITARY CLEANOUT
- ⊙ STORM SEWER MANHOLE
- ⊙ POWER POLE
- ⊙ GUY ANCHOR
- ⊙ ELECTRIC BOX
- ⊙ GAS METER
- ⊙ WATER METER
- ⊙ WATER VALVE
- ⊙ FIRE HYDRANT
- ⊙ SIGN

**IRRIGATION NOTE:**

ALL REQUIRED LANDSCAPE AREAS SHALL BE PROVIDED WITH AN AUTOMATIC UNDERGROUND IRRIGATION SYSTEM WITH RAIN AND FREEZE SENSORS, AND SAID IRRIGATION SYSTEM SHALL BE DESIGNED BY A QUALIFIED PROFESSIONAL AND INSTALLED BY A LICENSED IRRIGATOR.

NOTE: ALL PLANT BEDS MUST BE SEPARATED FROM LAWN AREAS BY STEEL EDGING OR OTHER HARD EDGE.

**CITY OF NORTH RICHLAND HILLS LANDSCAPE TABULATIONS**

SITE AREA: 29,320.19 SF (0.67 AC)

	REQUIRED	PROVIDED
LANDSCAPE AREA	15% (4,398 SF)	20.4% (5,997 SF)
LANDSCAPE SETBACK	15'	15'
	1 TREE / 50 LF (184.8/50 = 4 TREES)	3 EXISTING 1 NEW
	10 SHRUBS / 50 LF (184.8/50*10=37 SHRUBS)	37 SHRUBS
PARKING LOT SCREENING	YES	YES
PARKING LOT	1 TREE / 20 SPACES (35 SPACES/20=2 TREES) 5% LANDSCAPED	2 TREES YES

**KEY**

**TREES**

	2	UP	Ulmus crassifolia	Cedar Elm	3" Cal. Min. Cont. Grown-65 Gal. 12'-15' Height, 6'-8' Spread Specimen
	4	QT	Quercus texana	Texas Red Oak	3" Cal. Min. Cont. Grown-65 Gal. 12'-15' Height, 6'-8' Spread Specimen
	3	LI	Lagerstroemia indica	Crape Myrtle	3" Multi-Stem 6'-8' Height, 3'-6' Spread Specimen

**SHRUBS**

	12	ILC	Ilex cornuta 'Needle Point'	Needle Point Holly	7 Gal. Minimum 30" Minimum height at planting Spaced per plan, matching
	25	ILN	Ilex vomitoria 'Nana'	Dwarf Yaupon Holly	5-Gal Min. 24" Minimum height at planting Spaced per plan, matching
	54	HES	Hesperaloe parviflora	Red Yucca	3 Gal. Min. 18" ht. at planting Spaced per plan, matching
	72	MUH	Muhlenbergia capillaris	Pink Muhly Grass	3 Gal. Minimum 24" Minimum height at planting Spaced per plan, matching
	6	BUX	Buxus	Proven Winners Sprinter Boxwood	5-Gal Min. 24" Minimum height at planting Spaced per plan, matching
	6	LAN	Lantana camara	Lantana	3-Gal Minimum 18" ht. at planting Spaced per plan, matching

**GROUNDCOVER**

	527 SF	ROCK	RIVER ROCK		
	4,287 SF	SOD	BERMUDA GRASS SOD	BERMUDA	Solid sod Sand fill joints and provide uniform coverage within 30 days of completion



P.O. BOX 28 COLLINSVILLE, TEXAS 76233  
AMY@LONDON-LANDSCAPES.NET  
972-800-0676  
WWW.LONDON-LANDSCAPES.NET

FIRM LICENSE NO. #

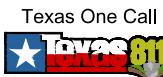


LANDSCAPE ARCHITECT OF RECORD  
NAME: AMY LONDON, RLA  
LICENSE NO. #2971

PROJECT NUMBER:  
111.006

REVISION:

**SMALLS SLIDERS**  
**NORTH RICHLAND HILLS**  
6051 PRECINCT LINE RD  
NORTH RICHLAND HILLS, TX 76180



Know what's below.  
Call before you dig,  
or  
**1-800-344-8377**  
texas811.org

**LANDSCAPE PLAN**

**L1.0**

DATE: JULY 1, 2026



711 N. FIELDER RD.  
 ARLINGTON, TX 76012  
 PH: (817) 635-5696  
 FAX: (817) 635-5699



6051 PRECINCT LINE RD  
 NORTH RICHLAND HILLS, TX 76180

PRELIMINARY  
 REVIEW ONLY  
 NOT FOR  
 CONSTRUCTION

REVISIONS

EXTERIOR  
 ELEVATIONS

SHEET NUMBER

A2.1

EXTERIOR FINISH SCHEDULE			
SYMBOL	ITEM	DESCRIPTION	REMARKS
PT-1	PAINT - ORANGE	SMALLS SLIDERS SMORANGE COLOR: SMORANGE FINISH: SEMI-GLOSS	a. b. BOLLARDS
PT-2	PAINT - MIDNIGHT BRONZE	SHERWIN WILLIAMS #6991 COLOR: MIDNIGHT BRONZE FINISH: SEMI-GLOSS	a. DOORS b. CANOPY, CANOPY COLUMNS, SCREEN WALL FRAMING, TRASH ENCLOSURE GATES
MP-1	METAL PANEL - MIDNIGHT BRONZE	MBCI METAL WALL PANEL PROFILE: MASTERLINE 16 COLOR: MIDNIGHT BRONZE	a.
MP-2	METAL PANEL - ORANGE	MBCI METAL WALL PANEL PROFILE: MASTERLINE 16 COLOR: ORANGE	a. WHERE NOTED, FACIA, GUTTERS, DOWNSPOUTS b. GUTTERS, DOWNSPOUTS
MP-3	ACCENT METAL - MIDNIGHT BRONZE	MBCI METAL WALL PANEL PROFILE: FLATSTOCK COLOR: MIDNIGHT BRONZE	a. COPING, TRIM b. DOWNSPOUTS
MP-4	FIBER CEMENT WALL PANEL	NICHIHA FIBER CEMENT PROFILE: CANYONBRICK COLOR: SHALE BROWN	a. PRIMARY BUILDING FIELD
MP-5	ACCENT METAL - ORANGE	MBCI METAL WALL PANEL PROFILE: FLATSTOCK COLOR: ORANGE	d. ACCENTS
SC-1	SCREEN / SCREEN WALL	NICHIHA FIBER CEMENT PROFILE: SMOOTH COLOR: MIDNIGHT BRONZE	b. REAR OF BUILDING
SN-1	SIGNAGE	CUSTOM SIGNAGE - PERMITTED UNDER SEPERATE SIGN PERMIT & INSTALLED BY SIGN CONTRACTOR	d. WHERE INDICATED
SF-1	STOREFRONT FRAME	STOREFRONT FRAME MANUFACTURER: KAWNEER/APPROVED EQUAL SERIES: TRIFAB VERSA 451 COLOR/FINISH: ANODIZED DARK BRONZE #40	b. STOREFRONT FRAME
SF-2	STOREFRONT GLAZING	STOREFRONT GLASS MANUFACTURER: OLD CASTLE SERIES: LAMINATED LAS CONTROL COLOR: CLEAR - LOW-E	b. STOREFRONT GLASS

**FINISH MATERIALS SCHEDULE NOTES:**

- PROVIDED BY OWNER AND INSTALLED BY OWNER
- ALL MATERIALS AND WORK PROVIDED AND INSTALLED BY GENERAL CONTRACTOR.
- PROVIDED BY OWNER AND INSTALLED BY GENERAL CONTRACTOR.
- PROVIDED BY OWNER AND INSTALLED BY SUB-CONTRACTOR / VENDOR

EXTERIOR FINISH LEGEND	
	MASONRY BOARD (MP-5) (SC-1)
	FIBER CEMENT WALL PANEL (MP-4)
	METAL PANEL (MP-1) (MP-3)

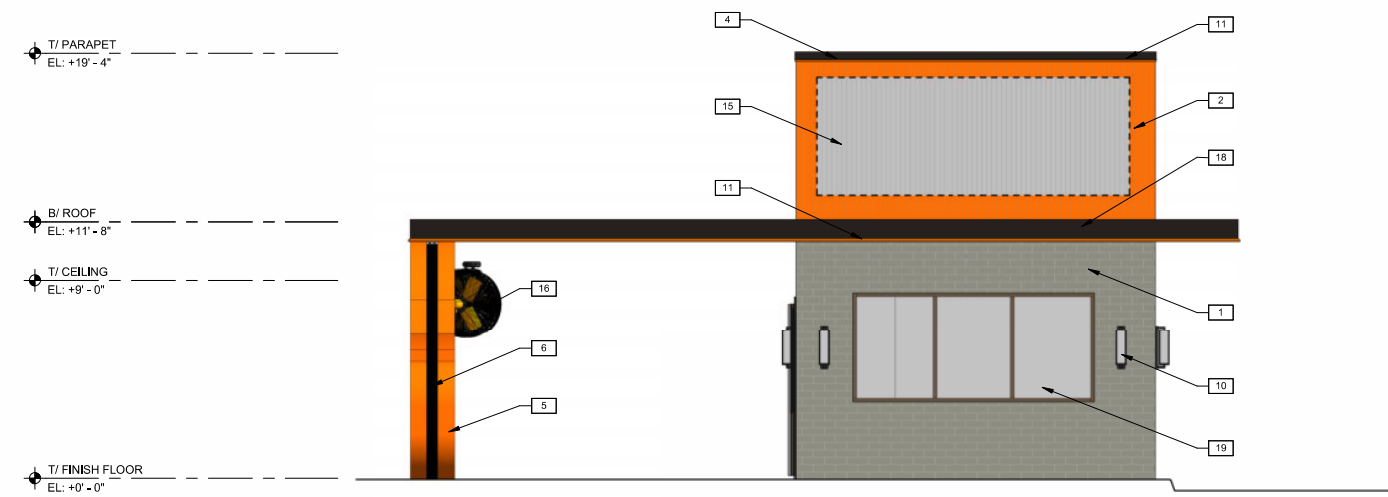
**ELEVATION KEYNOTES**

1	PRE-FINISHED FIBER CEMENT WALL PANEL (MP-4)
2	PRE-FINISHED METAL PANEL (MP-2)
3	PRE-FINISHED METAL BANDING (MP-1)
4	PARAPET COPING CAP (MP-3)
5	SMALLS SLIDERS ACCENT "S" (MP-5)
6	STEEL COLUMNS (PT-2) - REF. STRUCTURAL
7	COOLER/FREEZER SCREEN WALL (SC-1)
8	SCUPPER & DOWNSPOUT - REF. CIVIL FOR DOWNSPOUT CONNECTION TO UNDERGROUND STORM PIPE
10	WALL MOUNTED EXTERIOR LIGHT FIXTURE - REF. ELECTRICAL
11	LED ACCENT LIGHTING - REF. ELECTRICAL
12	SLIDING ORDER WINDOW - REF. WINDOW SCHEDULE
13	METAL DOOR (PT-2) - REF. DOOR SCHEDULE
15	SIGNAGE BY OTHERS (SN-1)
16	STEEL BEAMS AND PURLINS (PT-2) - REF. STRUCTURAL
17	OSCILLATING FAN MOUNTED TO STEEL COLUMN
18	METAL CANOPY
19	STOREFRONT WINDOWS, FRAME (SF-1), GLASS (SF-2) - REF. WINDOW SCHEDULE

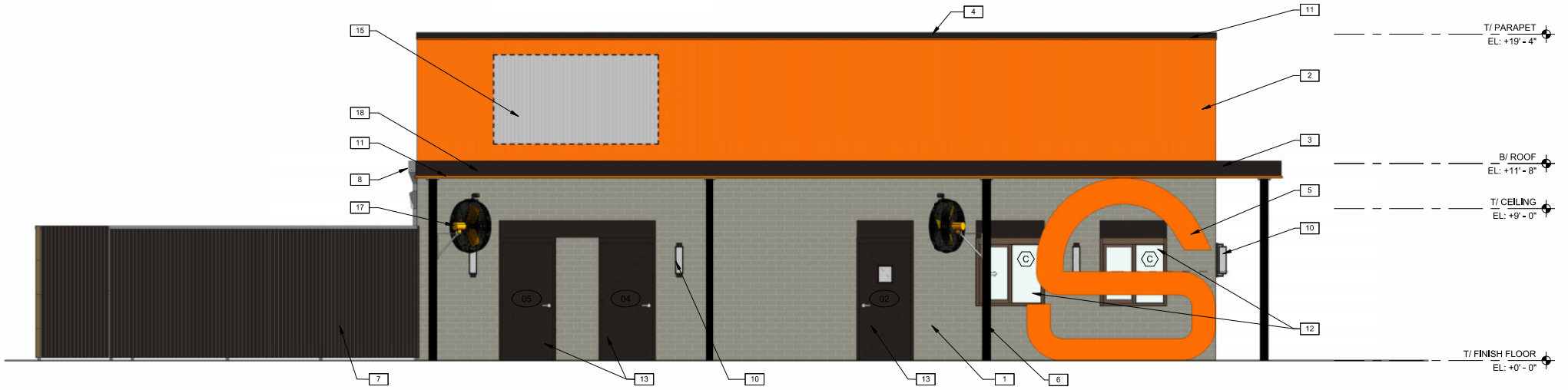
**FACADE MATERIALS AND CALCULATIONS:**

EXTERIOR CLADDING CALCULATIONS			
	FRONT ELEVATION	SF	%
<b>FRONT ELEVATION</b>			
PRIMARY		103 SF	31%
SECONDARY		118 SF	35%
METAL		41 SF	12%
DOORS		0 SF	0%
GLAZING		72 SF	22%
<b>TOTAL SF</b>		<b>334 SF</b>	<b>100%</b>
<b>PATIO SIDE</b>			
PRIMARY		433 SF	38%
SECONDARY		559 SF	49%
METAL		50 SF	4%
DOORS		72 SF	6%
GLAZING		38 SF	3%
<b>TOTAL SF</b>		<b>1,152 SF</b>	<b>100%</b>

NICHIHA FIBER CEMENT  
 PROFILE: RIBBED  
 COLOR: SMORANGE  
 NICHIHA FIBER CEMENT  
 PROFILE: CANYONBRICK  
 COLOE: SHALE BEOWN  
 COPING, PARAPET AND TRIM, CANOPY  
 MBCI MIDNIGHT BRONZE (MP-3) (PT-2)



2 EAST ELEVATION  
 SCALE: 1/4" = 1'-0"



1 SOUTH ELEVATION  
 SCALE: 1/4" = 1'-0"



711 N. FIELDER RD.  
 ARLINGTON, TX 76012  
 PH: (817) 635-5696  
 FAX: (817) 635-5699



6051 PRECINCT LINE RD  
 NORTH RICHLAND HILLS, TX 76180

PRELIMINARY  
 REVIEW ONLY  
 NOT FOR  
 CONSTRUCTION

REVISIONS

EXTERIOR  
 ELEVATIONS

SHEET NUMBER

A2.2

**EXTERIOR FINISH SCHEDULE**

SYMBOL	ITEM	DESCRIPTION	REMARKS
PT-1	PAINT - ORANGE	SMALLS SLIDERS SMORANGE COLOR: SMORANGE FINISH: SEMI-GLOSS	a. b. BOLLARDS
PT-2	PAINT - MIDNIGHT BRONZE	SHERWIN WILLIAMS #0991 COLOR: MIDNIGHT BRONZE FINISH: SEMI-GLOSS	a. DOORS b. CANOPY, CANOPY COLUMNS, SCREEN WALL FRAMING, TRASH ENCLOSURE GATES
MP-1	METAL PANEL - MIDNIGHT BRONZE	MBCI METAL WALL PANEL PROFILE: MASTERLINE 16 COLOR: MIDNIGHT BRONZE	a.
MP-2	METAL PANEL - ORANGE	MBCI METAL WALL PANEL PROFILE: MASTERLINE 16 COLOR: ORANGE	a. WHERE NOTED, FACIA, GUTTERS, DOWNSPOUTS b. GUTTERS, DOWNSPOUTS
MP-3	ACCENT METAL - MIDNIGHT BRONZE	MBCI METAL WALL PANEL PROFILE: FLATSTOCK COLOR: MIDNIGHT BRONZE	a. COPING, TRIM b. DOWNSPOUTS
MP-4	FIBER CEMENT WALL PANEL	NICHHA FIBER CEMENT PROFILE: CANYONBRICK COLOR: SHALE BROWN	a. PRIMARY BUILDING FIELD
MP-5	ACCENT METAL - ORANGE	MBCI METAL WALL PANEL PROFILE: FLATSTOCK COLOR: ORANGE	d. ACCENTS
SC-1	SCREEN / SCREEN WALL	NICHHA FIBER CEMENT PROFILE: SMOOTH COLOR: MIDNIGHT BRONZE	b. REAR OF BUILDING
SN-1	SIGNAGE	CUSTOM SIGNAGE - PERMITTED UNDER SEPERATE SIGN PERMIT & INSTALLED BY SIGN CONTRACTOR	d. WHERE INDICATED
SF-1	STOREFRONT FRAME	STOREFRONT FRAME MANUFACTURER: KAWNEER/APPROVED EQUAL SERIES: TRIFAB VERSA 451 COLOR/FINISH: ANODIZED DARK BRONZE #40	b. STOREFRONT FRAME
SF-2	STOREFRONT GLAZING	STOREFRONT GLASS MANUFACTURER: OLD CASTLE SERIES: LAMINATED L&S CONTROL COLOR: CLEAR - LOW-E	b. STOREFRONT GLASS

**FINISH MATERIALS SCHEDULE NOTES:**  
 a. PROVIDED BY OWNER AND INSTALLED BY OWNER  
 b. ALL MATERIALS AND WORK PROVIDED AND INSTALLED BY GENERAL CONTRACTOR.  
 c. PROVIDED BY OWNER AND INSTALLED BY GENERAL CONTRACTOR.  
 d. PROVIDED BY OWNER AND INSTALLED BY SUB-CONTRACTOR / VENDOR

**EXTERIOR FINISH LEGEND**

	MASONRY BOARD (MP-5) (SC-1)
	FIBER CEMENT WALL PANEL (MP-4)
	METAL PANEL (MP-1) (MP-3)

**ELEVATION KEYNOTES**

1	PRE-FINISHED FIBER CEMENT WALL PANEL (MP-4)
2	PRE-FINISHED METAL PANEL (MP-2)
3	PRE-FINISHED METAL BANDING (MP-1)
4	PARAPET COPING CAP (MP-3)
5	SMALLS SLIDERS ACCENT "S" (MP-5)
6	STEEL COLUMNS (PT-2) - REF. STRUCTURAL
7	COOLER/FREEZER SCREEN WALL (SC-1)
8	SCUPPER & DOWNSPOUT - REF. CIVIL FOR DOWNSPOUT CONNECTION TO UNDERGROUND STORM PIPE
10	WALL MOUNTED EXTERIOR LIGHT FIXTURE - REF. ELECTRICAL
11	LED ACCENT LIGHTING - REF. ELECTRICAL
12	SLIDING ORDER WINDOW - REF. WINDOW SCHEDULE
13	METAL DOOR (PT-2) - REF. DOOR SCHEDULE
15	SIGNAGE BY OTHERS (SN-1)
17	OSCILLATING FAN MOUNTED TO STEEL COLUMN
18	METAL CANOPY

**FACADE MATERIALS AND CALCULATIONS:**

**EXTERIOR CLADDING CALCULATIONS**

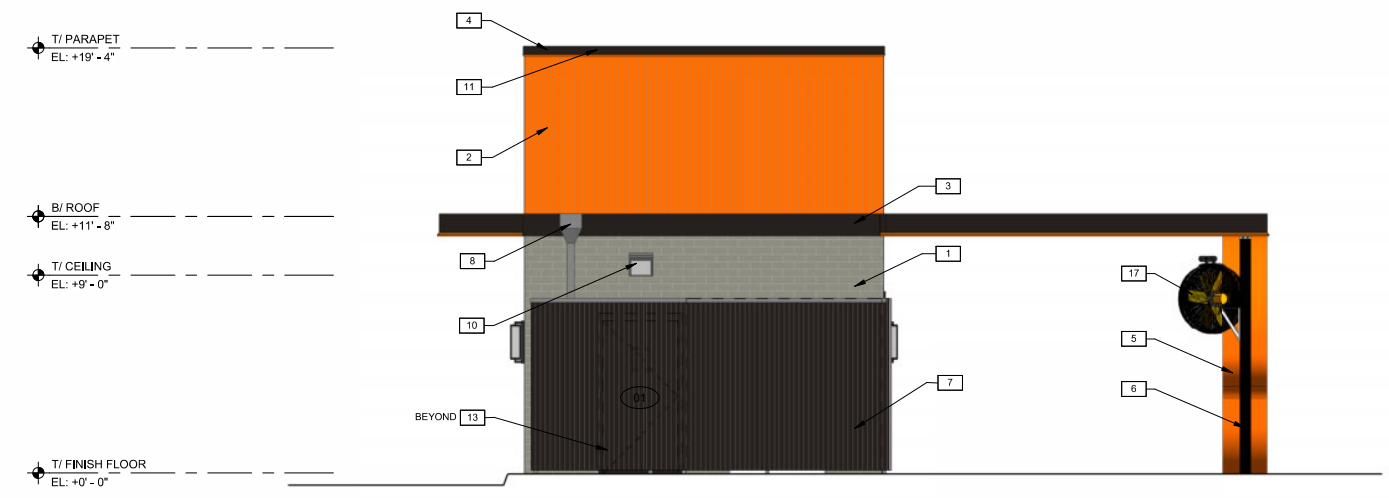
REAR ELEVATION	SF	%
PRIMARY	46 SF	14%
SECONDARY	251 SF	75%
METAL	39 SF	11%
DOORS	0 SF	0%
GLAZING	0 SF	0%
<b>TOTAL SF</b>	<b>336 SF</b>	<b>100%</b>

PICKUP SIDE	SF	%
PRIMARY	525 SF	48%
SECONDARY	558 SF	48%
METAL	50 SF	4%
DOORS	0 SF	0%
GLAZING	19 SF	2%
<b>TOTAL SF</b>	<b>1,152 SF</b>	<b>100%</b>

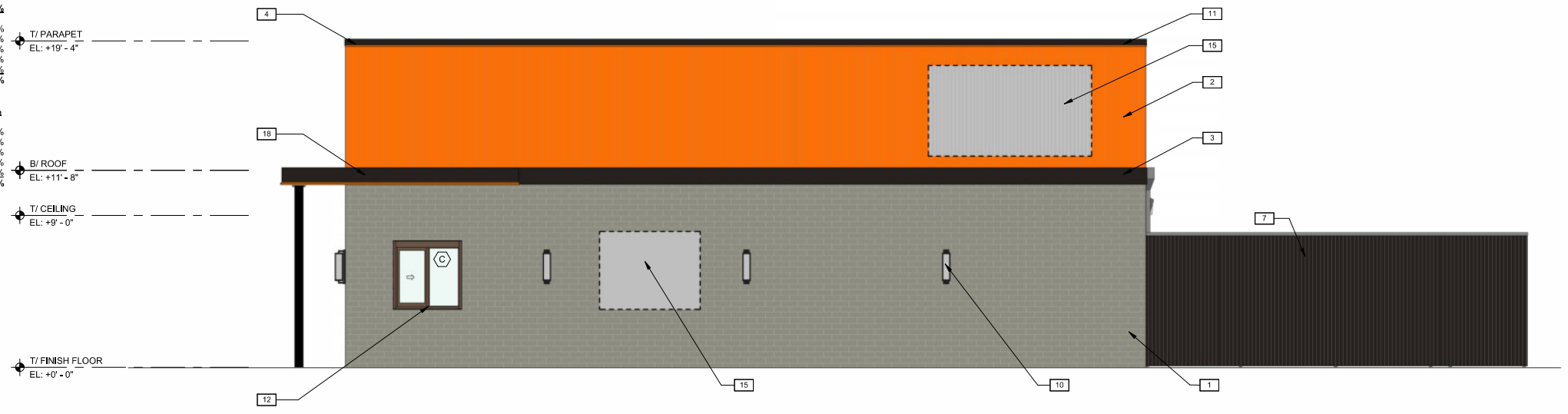
NICHHA FIBER CEMENT  
 PROFILE: RIBBED  
 COLOR: SMORANGE

NICHHA FIBER CEMENT  
 PROFILE: CANYONBRICK  
 COLOR: SHALE BROWN

COPING, PARAPET AND TRIM, CANOPY  
 MBCI MIDNIGHT BRONZE (MP-3) (PT-2)



2 WEST ELEVATION  
 SCALE: 1/4" = 1'-0"



1 NORTH ELEVATION  
 SCALE: 1/4" = 1'-0"