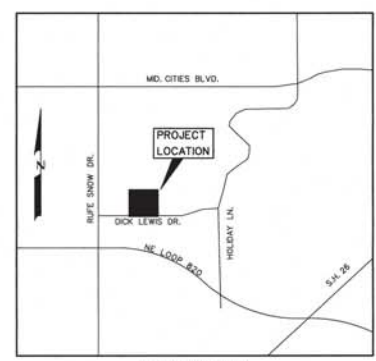
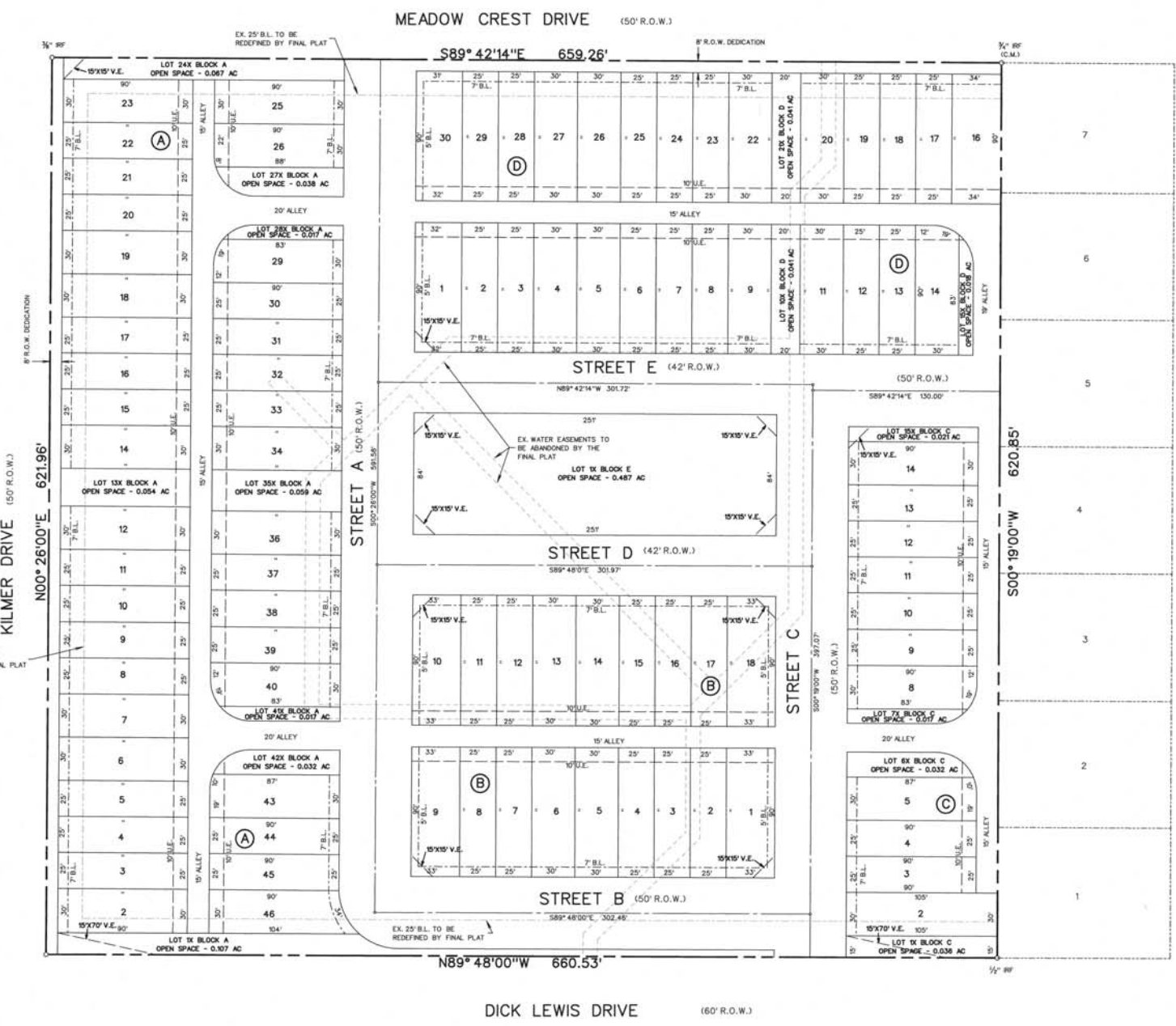


SNOW HEIGHTS NORTH ADDITION  
BLOCK 8R

SNOW HEIGHTS NORTH  
ADDITION BLOCK 6 LOT 2R1R

NRH SPLASH N DASH LLC.



**LEGEND**  
 B.L. - BUILDING LINE  
 R.O.W. - RIGHT OF WAY  
 H.O.A. - HOMEOWNERS ASSOCIATION  
 U.E. - UTILITY EASEMENT  
 V.E. - VISIBILITY EASEMENT

**NOTE:**  
 ALL OPEN SPACE LOTS TO BE OWNED AND MAINTAINED BY THE H.O.A.

Meadow Crest

Block A		Block A		Block B		Block C		Block D		Block D	
Lot	SF	Lot	SF	Lot	SF	Lot	SF	Lot	SF	Lot	SF
*1X	4669	25	2730	1	3019	1	1575	1	2910	24	2250
2	2752	26	2705	2	2250	2	3153	2	2250	25	2250
3	2250	*27X	1639	3	2250	3	2250	3	2250	26	2700
4	2250	*28X	769	4	2250	4	2250	4	2700	27	2700
5	2250	29	2667	5	2700	5	2700	5	2700	28	2250
6	2700	30	2250	6	2700	*6X	1402	6	2250	29	2250
7	2700	31	2250	7	2250	*7X	769	7	2250	30	2888
8	2250	32	2250	8	2250	8	2667	8	2250		
9	2250	33	2250	9	3019	9	2250	9	2700		
10	2250	34	2700	10	3013	10	2250	*10X	1800		
11	2250	*35X	2563	11	2250	11	2250	11	2700		
12	2700	36	2700	12	2250	12	2250	12	2250		
*13X	2357	37	2250	13	2700	13	2250	13	2250		
14	2700	38	2250	14	2700	14	2700	14	2684		
15	2250	39	2250	15	2250	*15X	936	*15X	768		
16	2250	40	2675	16	2250			16	3084		
17	2250	*41X	768	17	2250			17	2250		
18	2700	*42X	1993	18	3025	Block E		18	2250		
19	2700	43	2700	Lot	SF			19	2250		
20	2250	44	2250	*1X	21236			20	2700		
21	2250	45	2250					*21X	1800		
22	2250	46	2855					22	2700		
23	2708	2925						23	2250		

\* Denotes open space lots

WHEREAS the Planning and Zoning Commission of the City of North Richland Hills, Texas, voted affirmatively on this day of \_\_\_\_\_ 2018, to recommend approval of this Preliminary Plat.

\_\_\_\_\_  
 Chairman, Planning and Zoning Commission

\_\_\_\_\_  
 Attest: Secretary, Planning and Zoning Commission

**SURVEYOR'S CERTIFICATE**

I, WARREN L. CORWIN, a registered Professional Land Surveyor in the State of Texas, do hereby certify that this plat is true and correct and was prepared from an actual survey on the ground made by me or under my direction and supervision.

PRELIMINARY PLAT  
 OF  
**MEADOW CREST**

LOTS 1-46 BLOCK A  
 LOTS 1-18 BLOCK B  
 LOTS 1-15 BLOCK C  
 LOTS 1-30 BLOCK D  
 LOT 1 BLOCK E  
 9.413 ACRES

BEING A REPLAT OF LOT 11 OUT OF SNOW HEIGHTS NORTH RECORDED IN VOL. 388-159, PG. 75 OUT OF THE

W.W. WALLACE SURVEY, ABSTRACT NO. 1606 IN THE

CITY OF NORTH RICHLAND HILLS  
 TARRANT COUNTY, TEXAS

**OWNER**  
 SPAIN PROPERTIES, INC.  
 2050 HILL JOHNSON ROAD, SUITE 210  
 GRAPEVINE, TEXAS 76051  
 817-251-8145

**APPLICANT**  
 CALATLANTIC HOMES, INC.  
 2600 NETWORK BLVD., SUITE 600  
 FRISCO, TEXAS 75034  
 469-731-3100  
 CHIP BOYD

**PREPARED BY**  
 CORWIN ENGINEERING, INC.  
 TBPLS #10031700  
 200 W. BELMONT, SUITE E  
 ALLEN, TEXAS 75013  
 972-396-1200  
 WARREN CORWIN

JANUARY 2018 SCALE: 1"=50'  
 CASE NO. PP 2017-07