

MIDSTREAM GAS EASEMENT CALLS

Course	Bearing	Distance
E01	N 30°57'34" E	33.19'
E02	S 15°58'46" W	34.36'
E03	N 59°00'30" W	8.88'
E04	S 59°00'30" E	6.12'
E05	S 59°00'30" E	19.76'
E06	S 82°29'08" W	25.28'
E07	N 30°57'34" E	15.77'

MIDSTREAM GAS EASEMENT CALLS

Course	Bearing	Distance
E49	Rad: 160.00° Tan: 12.61' Chd: S 35°30'27" W	Arc: 25.16' CA: 9°00'40" 25.14'
E50	Rad: 71.00° Tan: 14.03' Chd: S 42°10'36" W	Arc: 27.69' CA: 22°20'58" 27.52'

Course	Bearing	Distance
L1	N 31°00'23" E	19.20'
L2	N 41°48'53" W	44.55'
L3	S 48°09'43" W	51.42'
L4	N 58°57'18" W	33.90'

Curve	Radius	Length	Delta	Chord	Chord Bear.
C1-LEFT	248.33'	11.27'	02°36'05"	11.27'	S 44°42'12" E
C2-RT.	25.00'	13.22'	30°17'45"	13.07'	S 33°00'50" W
C3-LEFT	2119.14'	60.07'	01°37'27"	60.07'	S 33°46'06" W
C4-LEFT	840.00'	36.06'	02°27'36"	36.06'	S 51°29'52" W

WATER LINE EASEMENT CALLS

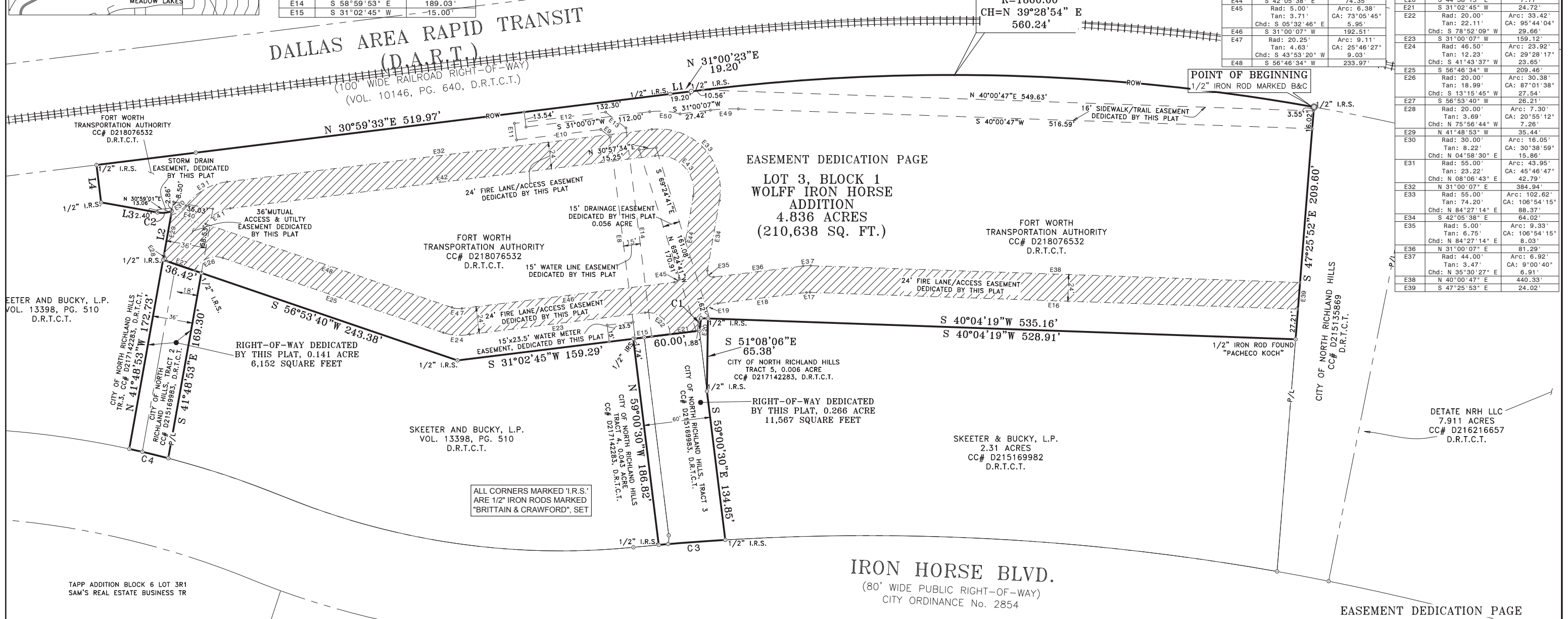
Course	Bearing	Distance
E8	N 58°59'53" W	182.81'
E9	S 76°00'07" W	10.76'
E10	S 31°00'07" W	76.35'
E11	N 58°59'53" W	15.00'
E12	N 31°00'07" E	82.56'
E13	N 76°00'07" E	23.18'
E14	S 58°59'53" E	189.03'
E15	S 31°02'45" W	15.00'

FIRE LANE EASEMENT CALLS

Course	Bearing	Distance
E40	N 52°14'36" E	31.99'
E41	Rad: 31.00° Tan: 14.55' Chd: N 05°51'36" E	Arc: 27.21' CA: 50°17'02" 26.34'
E42	N 31°00'05" E	384.94'
E43	Rad: 31.25° Tan: 41.64' Chd: N 84°39'35" E	Arc: 57.93' CA: 106°13'13" 49.99'
E44	S 42°05'38" E	74.35'
E45	Rad: 5.00° Tan: 3.71' Chd: S 05°32'46" E	Arc: 6.38' CA: 79°05'45" 5.95'
E46	S 31°00'07" W	192.51'
E47	Rad: 20.25° Tan: 4.63' Chd: S 43°53'20" W	Arc: 9.11' CA: 25°46'27" 9.03'
E48	S 56°46'34" W	233.97'

FIRE LANE EASEMENT CALLS

Course	Bearing	Distance
E16	S 40°00'47" W	439.26'
E17	Rad: 20.00° Tan: 1.58' Chd: S 35°30'27" W	Arc: 3.15' CA: 9°00'40" 3.14'
E18	S 31°00'07" W	80.40'
E19	Rad: 20.00° Tan: 15.28' Chd: S 06°22'22" E	Arc: 26.09' CA: 74°44'57" 24.28'
E20	S 44°38'15" E	7.77'
E21	S 31°02'45" W	24.72'
E22	Rad: 20.00° Tan: 22.11' Chd: S 78°52'09" W	Arc: 33.42' CA: 95°44'04" 29.66'
E23	S 31°00'07" W	159.12'
E24	Rad: 46.50° Tan: 12.23' Chd: S 41°43'37" W	Arc: 23.92' CA: 29°28'17" 23.65'
E25	S 56°46'34" W	209.46'
E26	Rad: 20.00° Tan: 18.99' Chd: S 13°15'45" W	Arc: 30.38' CA: 87°01'38" 27.54'
E27	S 56°53'40" W	26.21'
E28	Rad: 20.00° Tan: 3.69' Chd: N 75°56'44" W	Arc: 7.30' CA: 20°55'12" 7.26'
E29	N 41°48'53" W	35.44'
E30	Rad: 30.00° Tan: 8.22' Chd: N 04°58'30" E	Arc: 16.05' CA: 30°38'59" 15.86'
E31	Rad: 55.00° Tan: 23.22' Chd: N 08°06'43" E	Arc: 43.95' CA: 45°46'47" 42.79'
E32	N 31°00'07" E	384.94'
E33	Rad: 55.00° Tan: 74.20' Chd: N 84°27'14" E	Arc: 102.62' CA: 106°54'15" 88.37'
E34	S 42°05'38" E	64.02'
E35	Rad: 5.00° Tan: 6.75' Chd: N 84°27'14" E	Arc: 9.33' CA: 106°54'15" 8.03'
E36	N 31°00'07" E	81.29'
E37	Rad: 44.00° Tan: 3.47' Chd: N 35°30'27" E	Arc: 6.92' CA: 9°00'40" 6.91'
E38	N 40°00'47" E	440.33'
E39	S 47°25'53" E	24.02'



EASEMENT DEDICATION PAGE
LOT 3, BLOCK 1
WOLFF IRON HORSE
ADDITION
4.836 ACRES
(210,638 SQ. FT.)

EASEMENT DEDICATION PAGE
FINAL PLAT
WOLFF IRON HORSE
ADDITION
LOT 3, BLOCK 1
 AN ADDITION TO THE CITY OF NORTH RICHLAND HILLS, TARRANT COUNTY, TEXAS, BEING
5.242 ACRES OF LAND
 LOCATED IN THE
TELITHA AKERS SURVEY
ABSTRACT No. 19
 CITY OF NORTH RICHLAND HILLS
 TARRANT COUNTY, TEXAS
 GROSS ACRES: 5.242

