



south gate design.JPG

Photo Description: design idea for south gate



75553802868__A9FFC5E6-FB3C-4F08-A299-C1FDD4410E82.jpg

Photo Description: job trailer at job



IMG_3831.JPG

Photo Description: current job trailer



southwest corner 2.JPG



Southwest corner.JPG

Photo Description: shows 5105 Commercial dr



Back property fence.JPG

Photo Description: fence is triple layered currently with wood privacy, chain-link, and then another wood privacy



northeast corner.jpg

Photo Description: front parking and 5113 Commercial dr



North side of building.jpg

Photo Description: Spoke with tenants and they said trash truck backs in gets dumpsters here and drives back out the same way



ste A.jpeg

Photo Description: Suite A



Inside Ste B.jpg

Photo Description: where LCR offices would be located



north west corner.jpg

Photo Description: Trailers could be parked against building in front of bay doors between concrete steps



Industrial-Sliding-Gates-5109 commercial.jpg

Photo Description: this would be design idea for both north and south gates



Front of building.jpg

Photo Description: Fire Hydrant at front of building



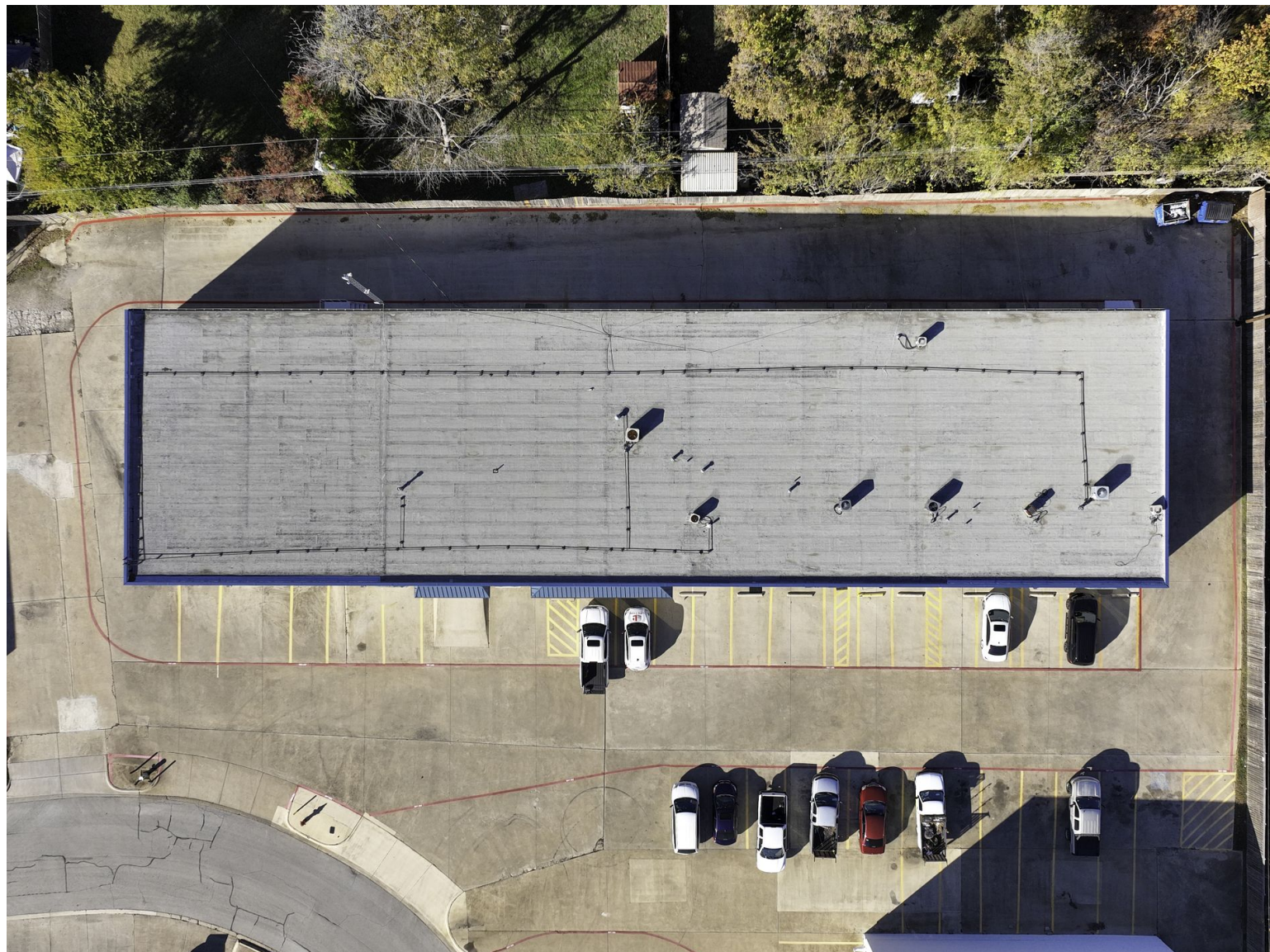
IMG_3843.JPG.jpg



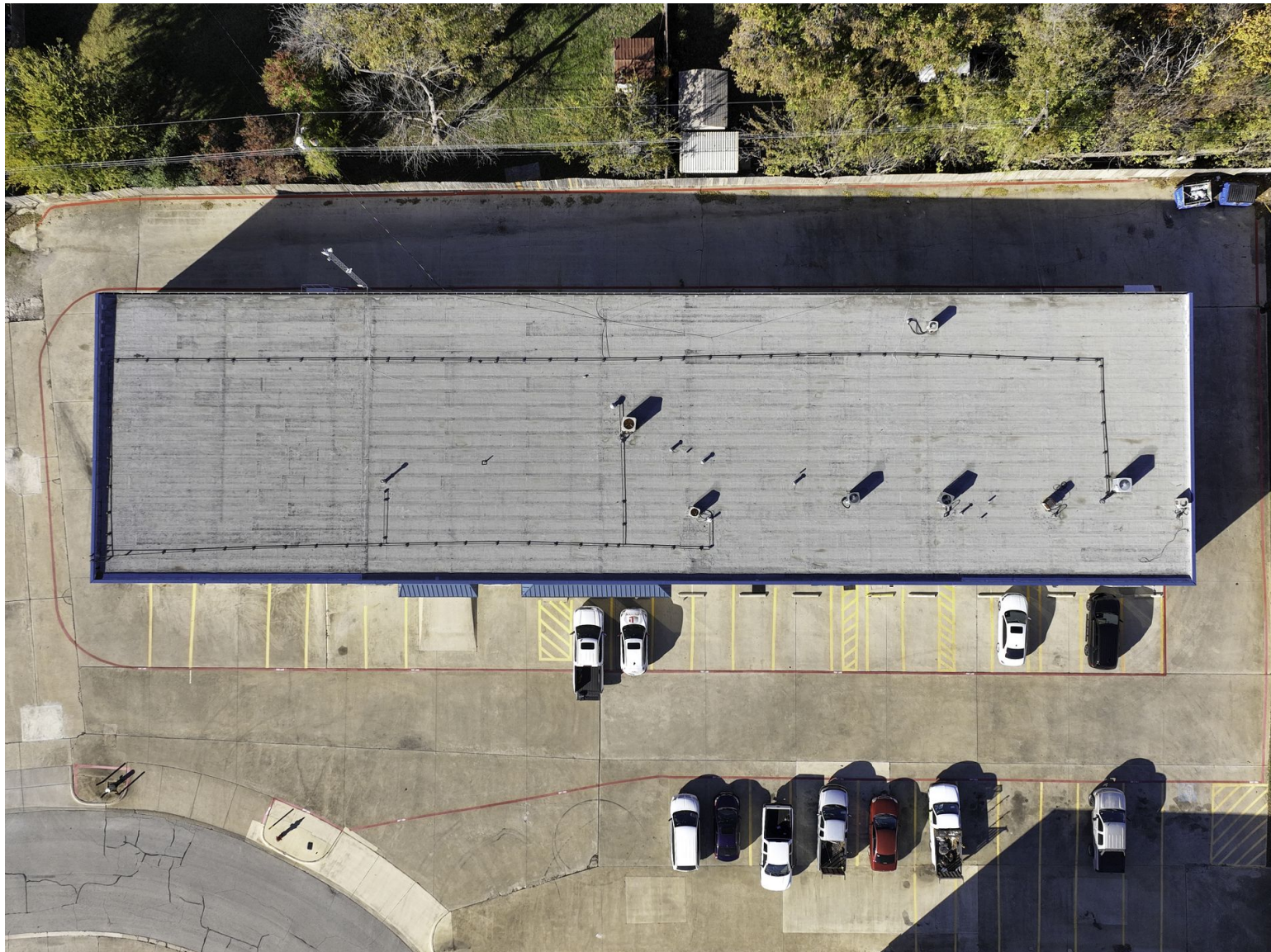
.JPG.jpg



DJI_0006.jpg



DJI_0008.jpg



DJI_0007.jpg



DJI_0009.jpg



DJI_0011.jpg



DJI_0010.jpg



DJI_0014.jpg

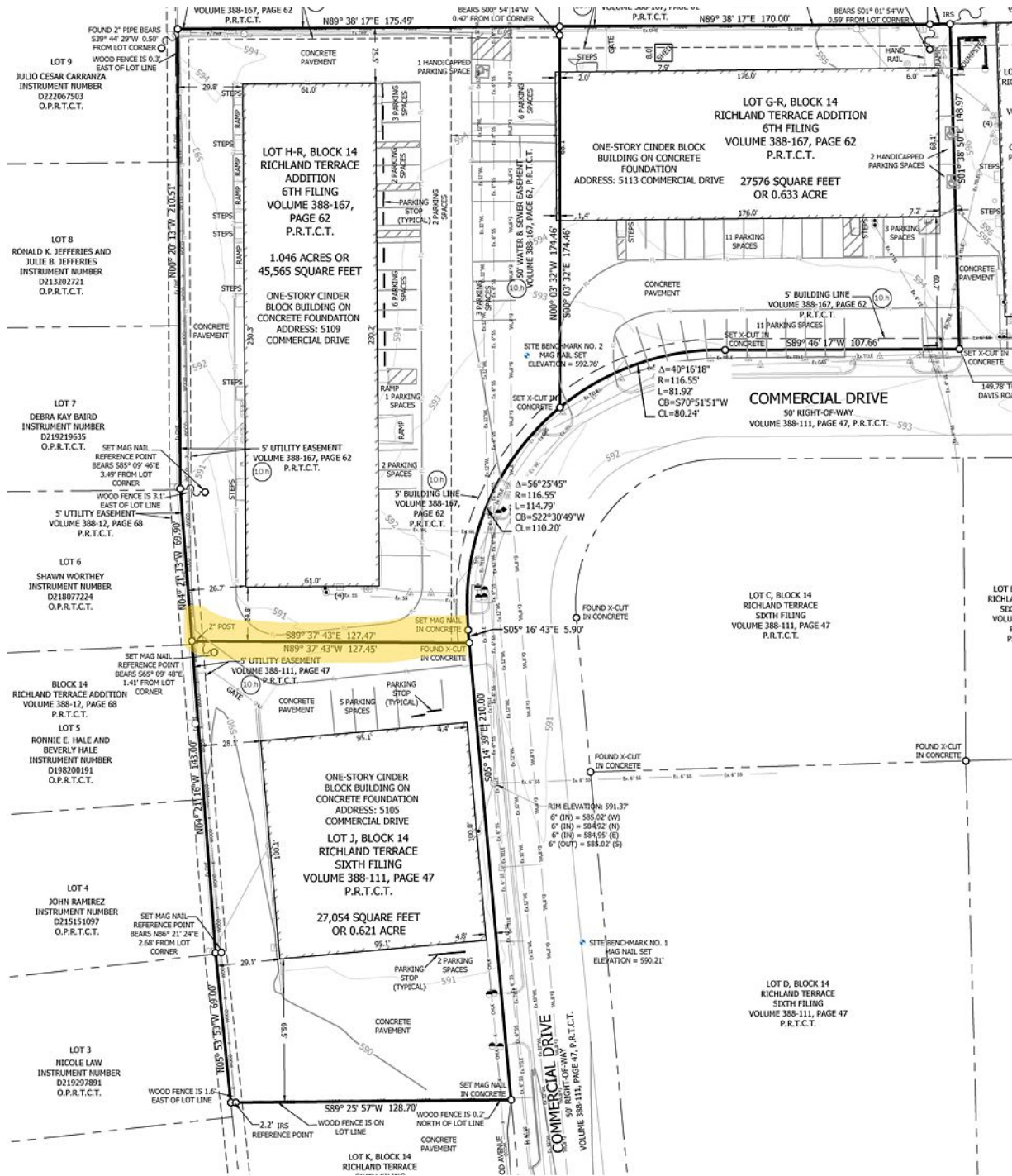


DJI_0013.jpg



IMG_3830.JPG

Photo Description: current trailer



NRH Survey.png

Industrial/Flex * LEASE/SALE
5109 COMMERCIAL DR

LandCrestCR.com

SUITE A

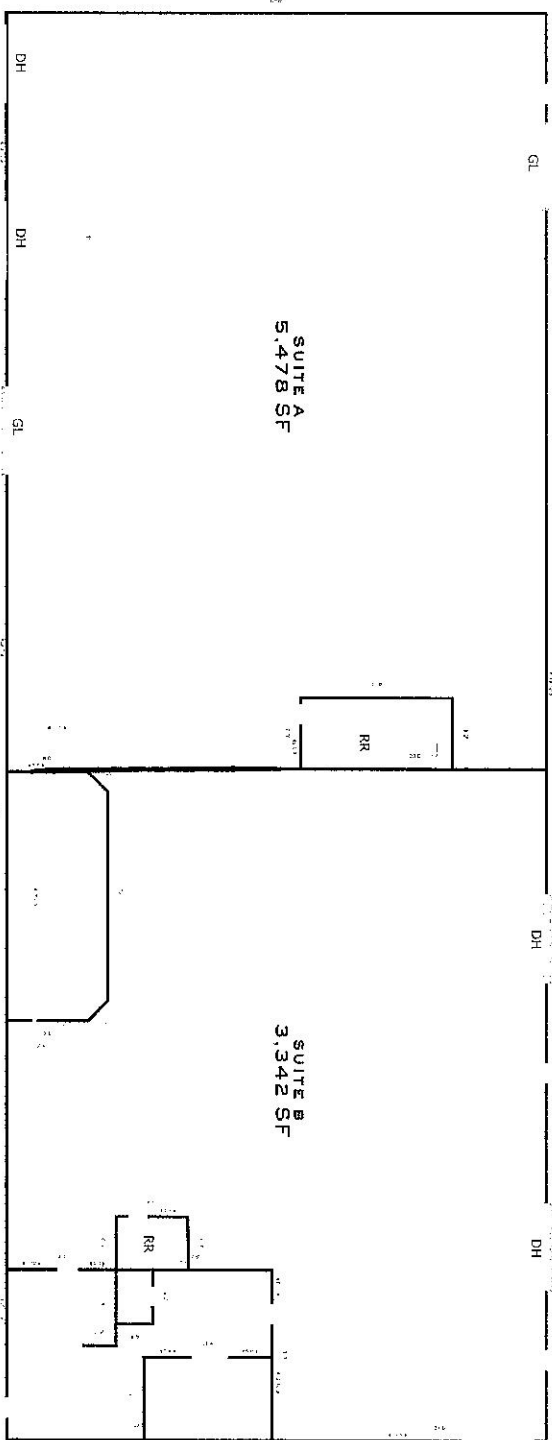
5,478 SF

- Clear height: 14'
- Dock + Grade level loading
- Various Office Warehouse ratios

SUITE B

3,342 SF

- Clear height: 14'
- Dock + Grade level loading
- Various Office Warehouse ratios



**Suites can be combined for 8,820 SF*