



SMITHFIELD ELEMENTARY
NORTH RICHLAND HILLS, TX



OWNER
BIRDVILLE ISD
6125 EAST BELKNAP
HALTOM CITY, TX 76117

ARCHITECT
HKS INC.
300 N SAINT PAUL STREET, SUITE 100
DALLAS, TX 75201

STRUCTURAL ENGINEER
JD INFRASTRUCTURE
100 GLASS STREET, SUITE 201
DALLAS, TX 75207

MEP ENGINEER
ESTES, MCLURE & ASSOCIATES, INC.
3008 WEST WAY
TYLER, TEXAS 75703

CIVIL ENGINEER
RAYMOND L. GODDSON JR., INC.
12001 N. CENTRAL EXPRESSWAY, SUITE 300
DALLAS, TX 75243

LANDSCAPE
CCA LANDSCAPE ARCHITECTS, INC.
12700 HILLCREST ROAD, SUITE 149
DALLAS, TX 75250

FOOD SERVICE
JMK FOODSERVICE CONSULTING & DESIGN, LLC.
341 LAKEVIEW PARKWAY, SUITE 205
ROWLETT, TX 75088

ACOUSTICS, AUDIO, VISUAL, TECH.
EDBRI CONSULTING, L.P.
15008 WRIGHT BROTHERS DRIVE
ADDICKS, TX 75001

SITE SUBMITTAL DRAWING PACKAGE

- SITE SCOPE NOTES:**
1. ALL FENCING AND GATES TO BE 6'-0" TALL UNLESS NOTED OTHERWISE.
 2. PROVIDE FOR KNOX LOCKS ON ALL GATES. PROVIDE AN ADDITIONAL KNOX SIGN AT THE BUILDING.
 3. PROVIDE 4 EXTRA BOLLARDS (NOT SHOWN) TO BE LOCATED AS NEEDED BY OWNER.
 4. SEE SHEET A1.0X FOR FENCING, GATES AND DUMPSTER ENCLOSURE.



ARCHITECT
HKS, INC.
350 N SAINT PAUL ST
SUITE 160
DALLAS, TX 75201

CIVIL ENGINEER
RANKING L. GOODSON, JR., INC.
12001 N. CENTRAL EXPRESSWAY, SUITE 300
DALLAS, TEXAS 75243

LANDSCAPE
OCA LANDSCAPE ARCHITECTS, INC.
12700 HOLLOWAY RD, SUITE 149
DALLAS, TX 75228

STRUCTURAL
JQ INFRASTRUCTURE, LLC
100 GLASS STREET, SUITE 201
DALLAS, TEXAS 75201

MEP
ESTES MCCLURE & ASSOCIATES, INC.
3608 WEST WAY STREET
TYLER, TX 75703

FOOD SERVICE
JMK FOODSERVICE CONSULTING & DESIGN, LLC
3431 LAKEVIEW PKWY, STE 205
ROWLETT, TX 75088

BISD
SMITHFIELD ELEMENTARY SCHOOL CAMPUS
REPLACEMENT AND THREE HIGH SCHOOL FINE
ARTS AUDITORIUM UPGRADES

OWNER
BROOKVILLE INDEPENDENT SCHOOL DISTRICT
8125 EAST BUCKNAP
HALTOM CITY, TX 76117

INTERIM REVIEW ONLY
These documents are incomplete, and are intended for review only and are not intended for regulatory approval, permit, or construction purposes.
Author: MARK VANDERVOORT
Arch. Reg. No.: 09114
Date: 11/15/2019

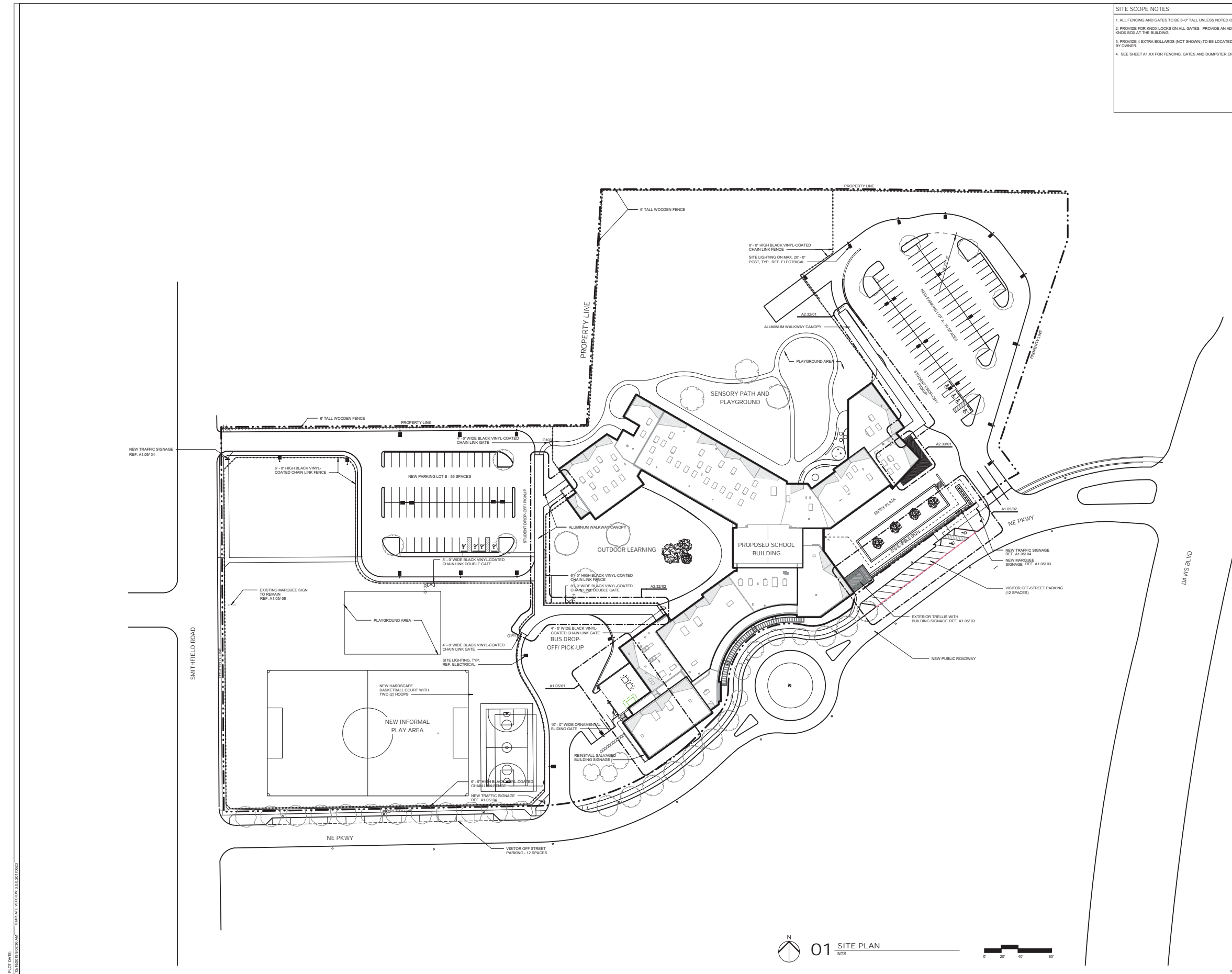
KEY PLAN

REVISION NO.	DESCRIPTION	DATE

PROJECT CASE NUMBER
SP 2019-18
HKS PROJECT NUMBER
22526.000
DATE
12/18/19
ISSUE
SITE SUBMITTAL
DRAWING PACKAGE
SHEET TITLE
ARCHITECTURAL
SITE PLAN

SHEET NO.

A1.04



01 SITE PLAN
NTS



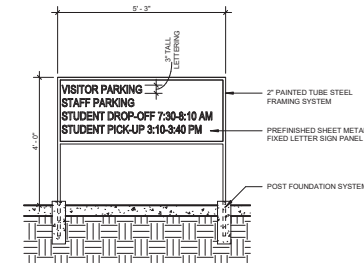
PLANT DATE:
12/18/2019 10:28:22 AM
MARK VANDERVOORT 12/18/2019 10:28:22 AM



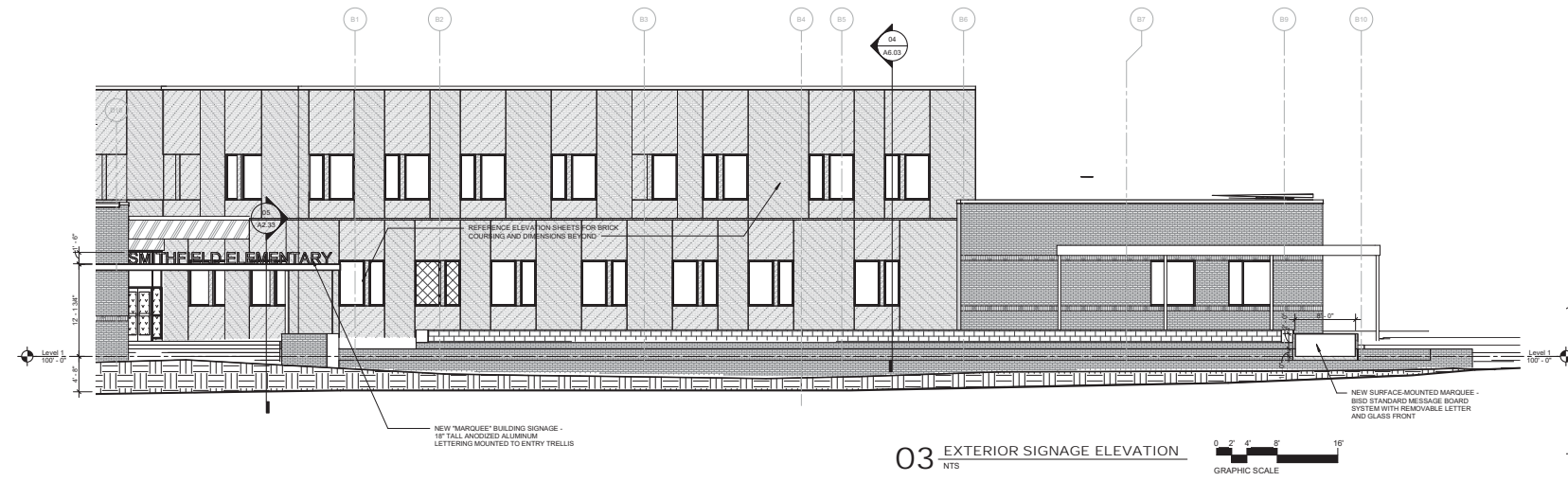
06 EXISTING MARQUEE SIGNAGE
NTS



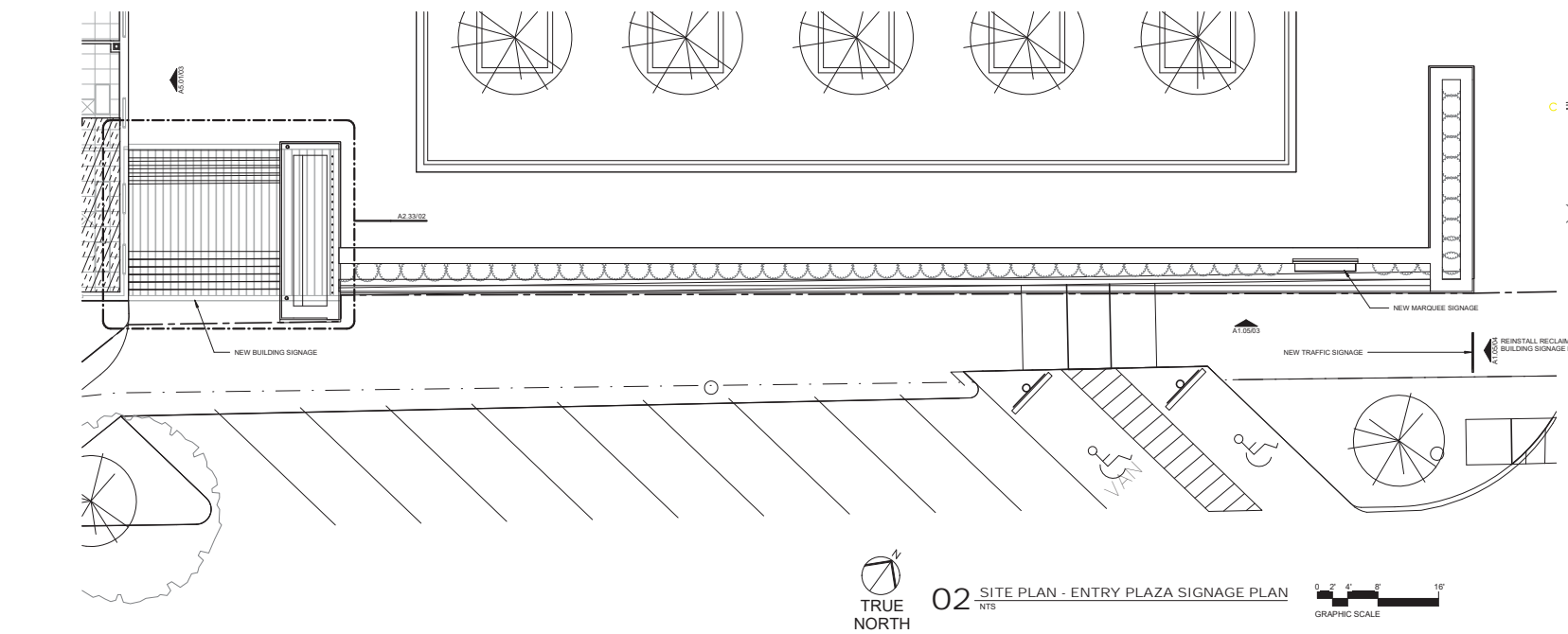
05 EXISTING BUILDING SIGNAGE
NTS



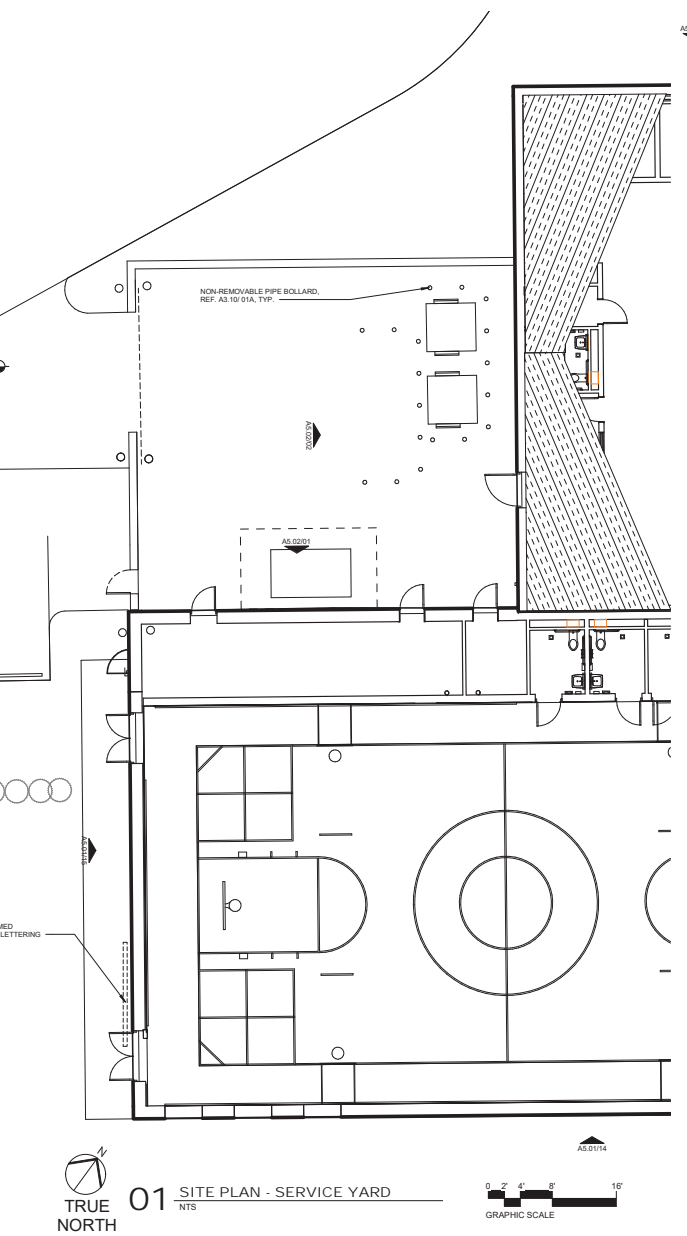
04 EXAMPLE TRAFFIC SIGNAGE
NTS



03 EXTERIOR SIGNAGE ELEVATION
NTS



02 SITE PLAN - ENTRY PLAZA SIGNAGE PLAN
NTS



01 SITE PLAN - SERVICE YARD
NTS

HKS

ARCHITECT
HKS, INC.
350 N SAINT PAUL ST
SUITE 900
DALLAS, TX 75201

CIVIL ENGINEER
RANDOLPH L. GOODSON, JR., INC.
12001 N. CENTRAL EXPRESSWAY, SUITE 300
DALLAS, TEXAS 75243

LANDSCAPE
OCA LANDSCAPE ARCHITECTS, INC.
12700 HALLCREST RD, SUITE 149
DALLAS, TX 75243

STRUCTURAL
JQ INFRASTRUCTURE, LLC
100 GLASS STREET, SUITE 201
DALLAS, TEXAS 75201

MEP
ESTES MCCLURE & ASSOCIATES, INC.
3608 WEST WAY STREET
TYLER, TX 75703

FOOD SERVICE
JMK FOODSERVICE CONSULTING & DESIGN, LLC
3431 LAKEVIEW PKWY, STE 205
ROWLETT, TX 75088

BISD

SMITHFIELD ELEMENTARY SCHOOL CAMPUS
REPLACEMENT AND THREE HIGH SCHOOL FINE
ARTS AUDITORIUM UPGRADES

OWNER
BROOKVILLE INDEPENDENT SCHOOL DISTRICT
8725 EAST BUCKLEUP
HALTOM CITY, TX 76117

INTERIM REVIEW ONLY
These documents are incomplete, and
are intended for interim review only and
are not intended for regulatory approval,
permits, or construction purposes.
ARCHITECT: MARK VANDER VOORT
Arch. Reg. No.: 09114
Date: 11/15/2019

KEY PLAN

REVISION NO.	DESCRIPTION	DATE

PROJECT CASE NUMBER
SP 2019-18
HKS PROJECT NUMBER
22526.000
DATE
12/18/19
ISSUE
SITE SUBMITTAL
DRAWING PACKAGE
SHEET TITLE
ENLARGED SITE
PLANS &
ELEVATIONS
SHEET NO.

A1.05

PLOT DATE: 12/18/2019 10:42 AM MARK VANDERVOORT 10/31/2019

© 2019 HKS, INC.

HKS

ARCHITECT
HKS, INC.
350 N SAINT PAUL ST
SUITE 160
DALLAS, TX 75201

CIVIL ENGINEER
RANKING L. GOODSON, JR., INC.
12001 N CENTRAL EXPRESSWAY, SUITE 300
DALLAS, TEXAS 75243

LANDSCAPE
OCA LANDSCAPE ARCHITECTS, INC.
12700 HOLLOWAY RD, SUITE 149
DALLAS, TX 75228

STRUCTURAL
JQ INFRASTRUCTURE, LLC
100 GLASS STREET, SUITE 201
DALLAS, TEXAS 75201

MEP
ESTES MCCLURE & ASSOCIATES, INC.
3608 WEST WAY STREET
TYLER, TX 75703

FOOD SERVICE
JMK FOODSERVICE CONSULTING & DESIGN, LLC
3431 LAKEVIEW PKWY, STE 205
ROWLETT, TX 75088

BISD
SMITHFIELD ELEMENTARY SCHOOL CAMPUS
REPLACEMENT AND THREE HIGH SCHOOL FINE
ARTS AUDITORIUM UPGRADES

OWNER
BROOKVILLE INDEPENDENT SCHOOL DISTRICT
6125 EAST BUCKLEUP
HALTOM CITY, TX 76117

INTERIM REVIEW ONLY
These documents are incomplete, and
are intended for review only and
are not intended for regulatory approval,
permits, or construction purposes.
Architect: MARK VANDERVOORT
Arch. Reg. No.: 09114
Date: 11/15/2019

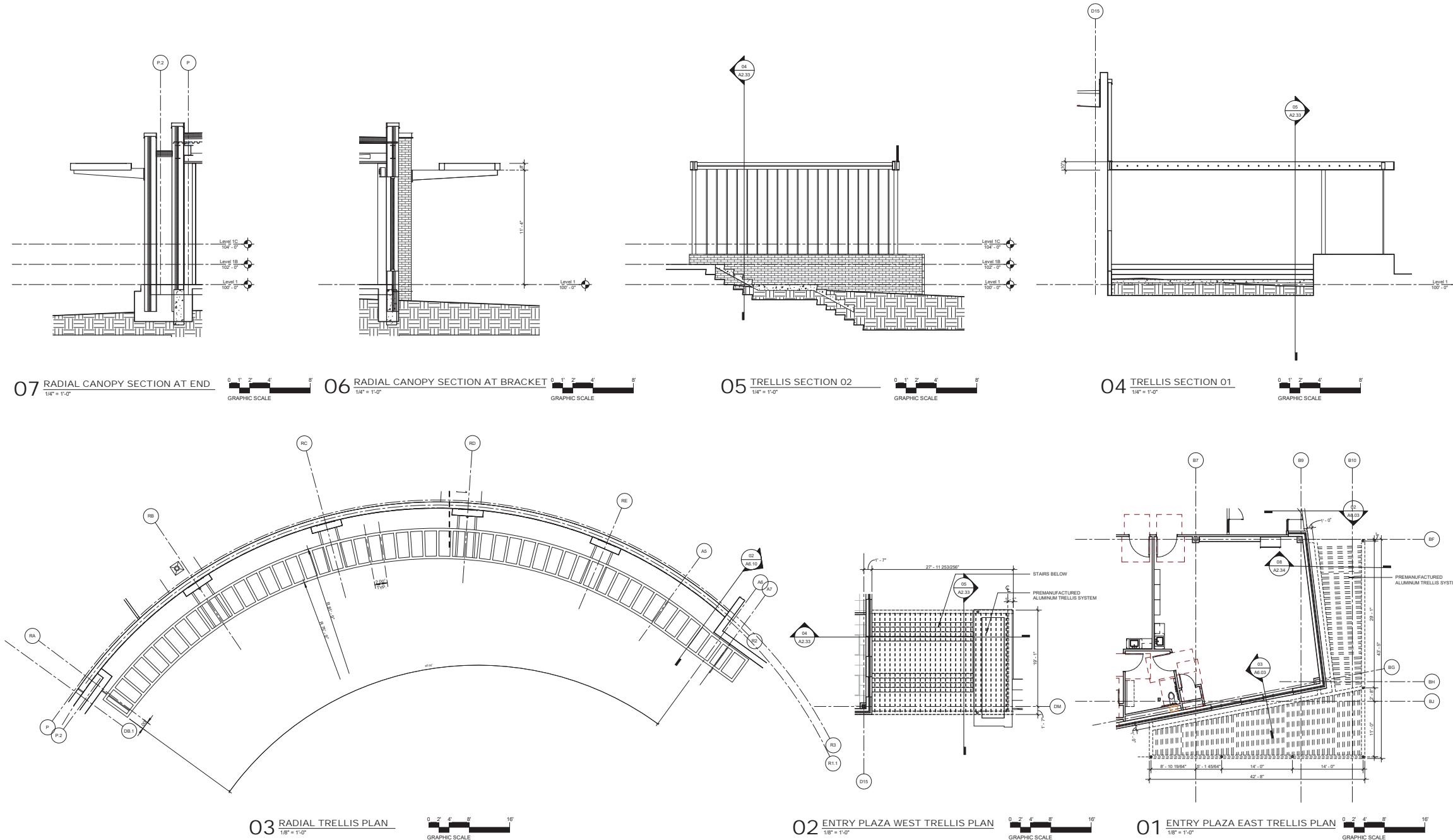
KEY PLAN

REVISION NO.	DESCRIPTION	DATE

PROJECT CASE NUMBER
SP 2019-18
HKS PROJECT NUMBER
22526.000
DATE
12/18/19
ISSUE
SITE SUBMITTAL
DRAWING PACKAGE
SHEET TITLE
CANOPY PLANS

SHEET NO.

A2.33



PLOT DATE: 12/18/2019 10:42 AM
 PLOT SCALE: 1/8" = 1'-0"
 PLOT PATH: \\HKS-FILESERVER\PROJECTS\2019\SP18\22526\A2.33.dwg



ARCHITECT
HKS, INC.
300 N SAINT PAUL ST
SUITE 900
DALLAS, TX 75201

CIVIL ENGINEER
RAYMOND L. GOODSON, JR., INC.
12001 N CENTRAL EXPRESSWAY, SUITE 300
DALLAS, TEXAS 75243

LANDSCAPE
OCA LANDSCAPE ARCHITECTS, INC.
12100 HOLLOWAY RD., SUITE 149
DALLAS, TX 75228

STRUCTURAL
AQ INFRASTRUCTURE, LLC
100 GLASS STREET, SUITE 201
DALLAS, TEXAS 75201

MEP
ESTES MCCLURE & ASSOCIATES, INC.
3808 WEST WAY STREET
TYLER, TX 75703

FOOD SERVICE
JMK FOODSERVICE CONSULTING & DESIGN, LLC
3431 LAKEVIEW PKWY, STE 205
ROWLETT, TX 75088

SMITHFIELD ELEMENTARY SCHOOL CAMPUS
REPLACEMENT AND THREE HIGH SCHOOL FINE
ARTS AUDITORIUM UPGRADES

OWNER
BROOKVILLE INDEPENDENT SCHOOL DISTRICT
6125 EAST BUCKNAP
HALTOM CITY, TX 76117

INTERIM REVIEW ONLY
These documents are incomplete, and are not intended for regulatory approval, permit, or construction purposes.
Author: MARK VANDER VOORT
Arch. Reg. No.: 03114
Date: 11/15/2019

KEY PLAN

REVISION NO.	DESCRIPTION	DATE

PROJECT CASE NUMBER
SP 2019-18

HKS PROJECT NUMBER
22526.000

DATE
12/18/19

ISSUE
SITE SUBMITTAL
DRAWING PACKAGE
SHEET TITLE
EXTERIOR
ELEVATIONS

SHEET NO.
A5.01

EXTERIOR MATERIALS REFERENCE			
FINISH INFORMATION	GRAPHIC SYMBOL	FINISH INFORMATION	GRAPHIC SYMBOL
GL-01 TYPE: SOLARBAN 70 MANUF: VITRO COLOR: SCARLETT SIDE: YES COMMENT: TYP. EXT. GLAZING U.G.O.		GL-02 TYPE: SOLARBAN 70 MANUF: VITRO COLOR: SCARLETT SIDE: YES COMMENT: TYP. EXT. SPANDREL GLAZING	
GL-03 TYPE: SECURITY M LEVEL 9A MANUF: MATCH BR-01 COLOR: MATCH BR-01 SIDE: YES COMMENT: 1/2" GLASS W/ 1/2" AIRSPACE AND 7 LAYERS 1/4" LAMINATED GLASS TO BE CLEAR PVB W/ BALLISTIC FILM ON B4 FACE		GL-04 TYPE: SECURITY M LEVEL 1 MANUF: MATCH BR-01 COLOR: MATCH BR-01 SIDE: YES COMMENT: 1/2" GLASS W/ 1/2" AIRSPACE AND 7 LAYERS 1/4" LAMINATED GLASS TO BE CLEAR PVB W/ BALLISTIC FILM ON B4 FACE	
GL-05 TYPE: STORM RATED GLASS TYPE: YES COLOR: MATCH BR-01 SIDE: YES COMMENT: WATED ICC 508 2014		MP-01 TYPE: METAL PANEL MANUF: YES COLOR: YES SIDE: YES COMMENT: REF. ELEVATIONS	
ASB-01 TYPE: ARCH EXP. STUBIC STEEL MANUF: YES COLOR: YES SIDE: YES COMMENT: N/A		BR-01 TYPE: BRICK VENEER MANUF: YES COLOR: YES SIDE: YES COMMENT: RUNNING BOND	
BR-02 TYPE: BRICK VENEER MANUF: YES COLOR: YES SIDE: YES COMMENT: RUNNING BOND		BR-03 TYPE: BRICK VENEER MANUF: YES COLOR: YES SIDE: YES COMMENT: RUNNING BOND	
BR-04 TYPE: BRICK VENEER MANUF: YES COLOR: YES SIDE: YES COMMENT: FLEMISH BOND		BR-05 TYPE: BRICK VENEER MANUF: YES COLOR: YES SIDE: YES COMMENT: FLEMISH BOND	
BR-06 TYPE: BRICK VENEER MANUF: YES COLOR: YES SIDE: YES COMMENT: STACK BOND		BR-07 TYPE: BRICK VENEER MANUF: YES COLOR: YES SIDE: YES COMMENT: STACK BOND	
BR-08 TYPE: BRICK VENEER MANUF: YES COLOR: YES SIDE: YES COMMENT: ROWLOCK		BR-09 TYPE: BRICK VENEER MANUF: YES COLOR: YES SIDE: YES COMMENT: SOLDER BOND	

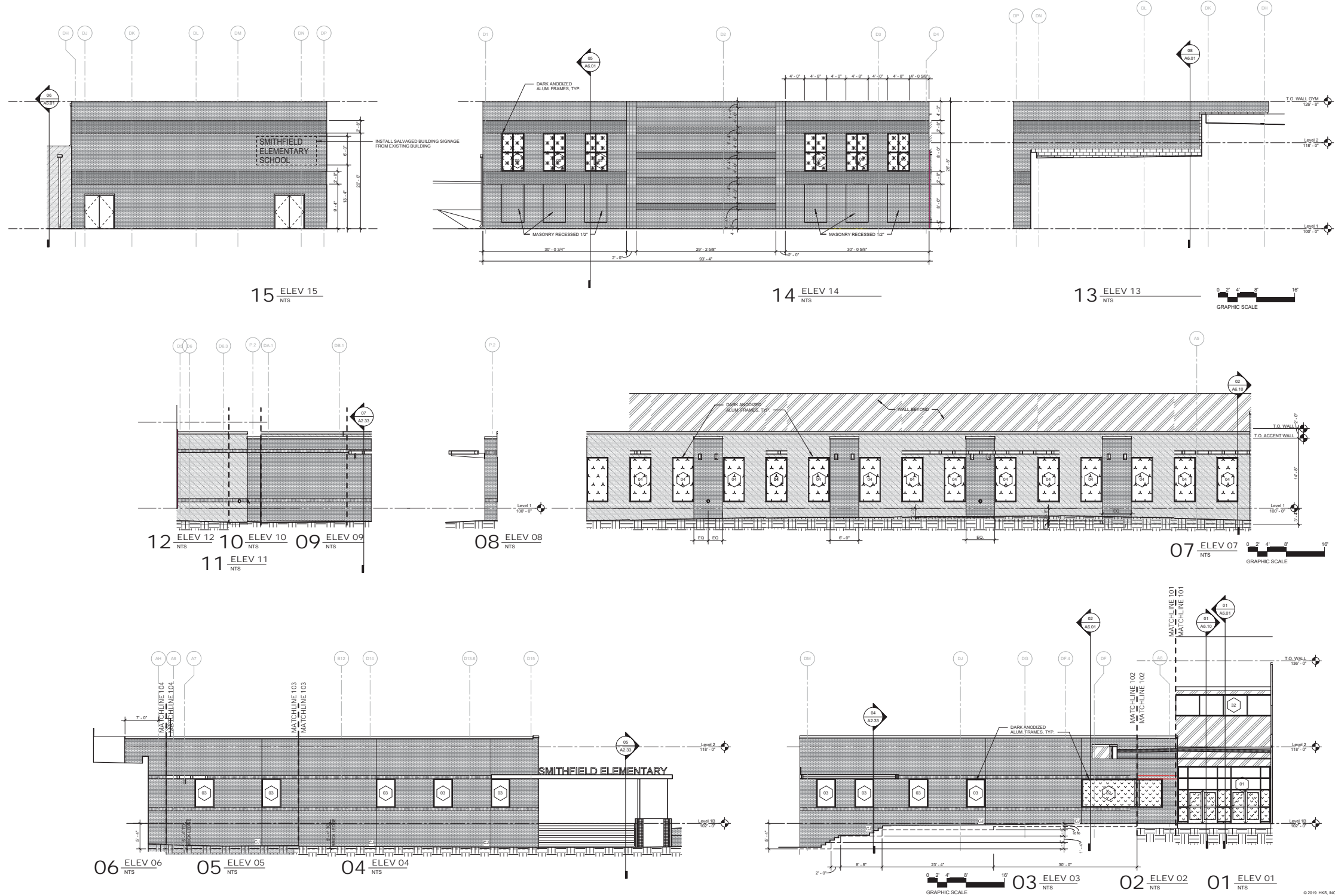
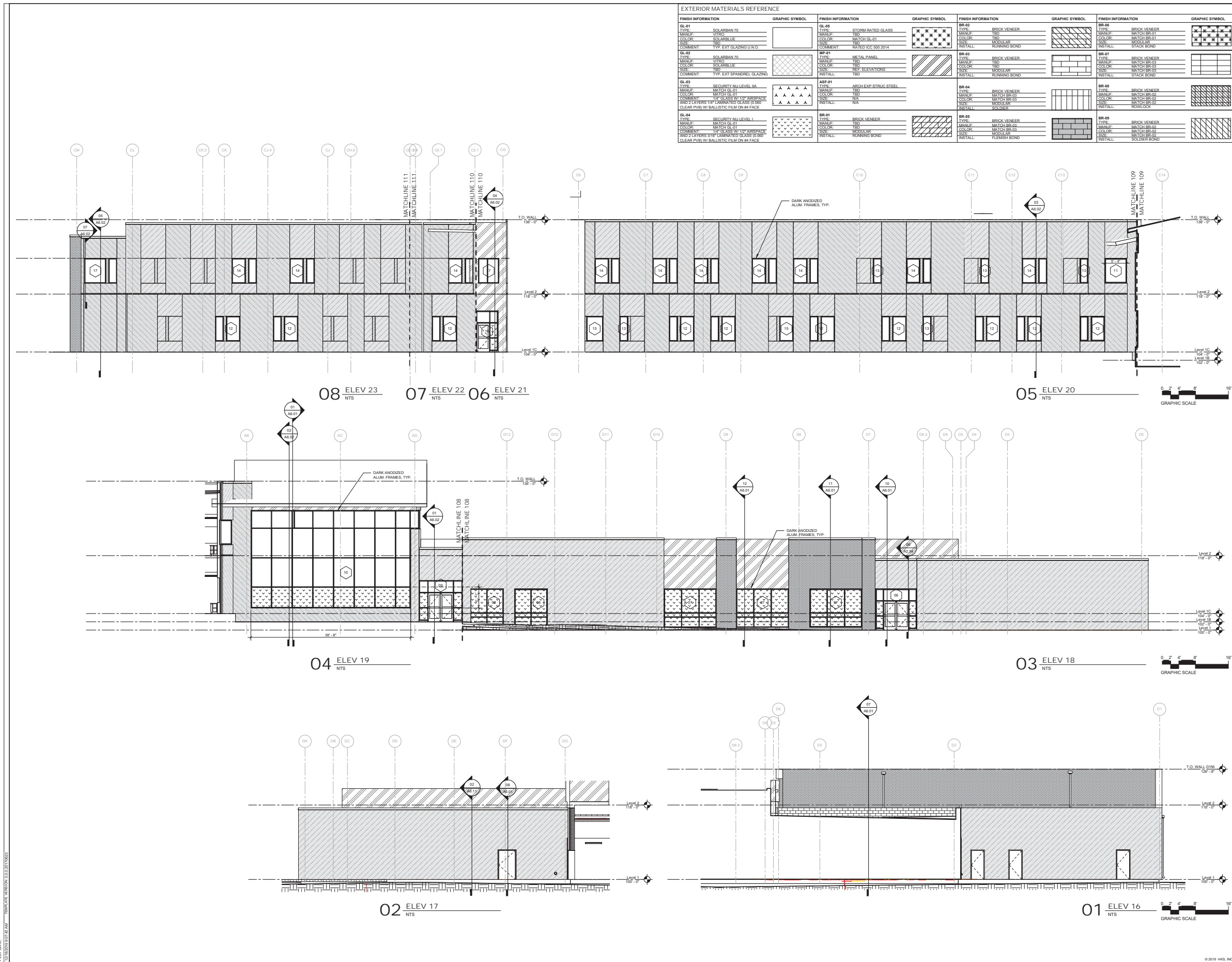


PHOTO DATE: 11/15/2019
 PHOTO TIME: 10:00 AM
 PHOTO LOCATION: 10000 N. CENTRAL EXP. ST.



ARCHITECT
HKS, INC.
300 N. SAINT PAUL ST.
SUITE 900
DALLAS, TX 75201

CIVIL ENGINEER
RAYMOND L. GOODEN, JR., INC.
12001 N. CENTRAL EXPRESSWAY, SUITE 300
DALLAS, TEXAS 75243

LANDSCAPE
OCA LANDSCAPE ARCHITECTS, INC.
12700 HALLOREST RD., SUITE 149
DALLAS, TX 75228

STRUCTURAL
JQ INFRASTRUCTURE, LLC
100 GLASS STREET, SUITE 201
DALLAS, TEXAS 75201

MEP
ESTES MCCLURE & ASSOCIATES, INC.
3608 WEST WAY STREET
TYLER, TX 75703

FOOD SERVICE
J&B FOODSERVICE CONSULTING & DESIGN, LLC
3431 LAKEVIEW PKWY, STE 205
ROWLETT, TX 75088

**SMITHFIELD ELEMENTARY SCHOOL CAMPUS
REPLACEMENT AND THREE HIGH SCHOOL FINE
ARTS AUDITORIUM UPGRADES**



OWNER
BROVILLE INDEPENDENT SCHOOL DISTRICT
612 EAST BUCKNAP
HALTOM CITY, TX 76117

INTERIM REVIEW ONLY
These documents are incomplete, and are intended for interim review only and are not intended for regulatory approval, permit, or construction purposes.
Architect: MARK VANDER VOORT
Arch. Reg. No.: 03114
Date: 11/15/2019

REVISION

NO.	DESCRIPTION	DATE

PROJECT CASE NUMBER
SP 2019-18

HKS PROJECT NUMBER
22526.000

DATE
12/18/19

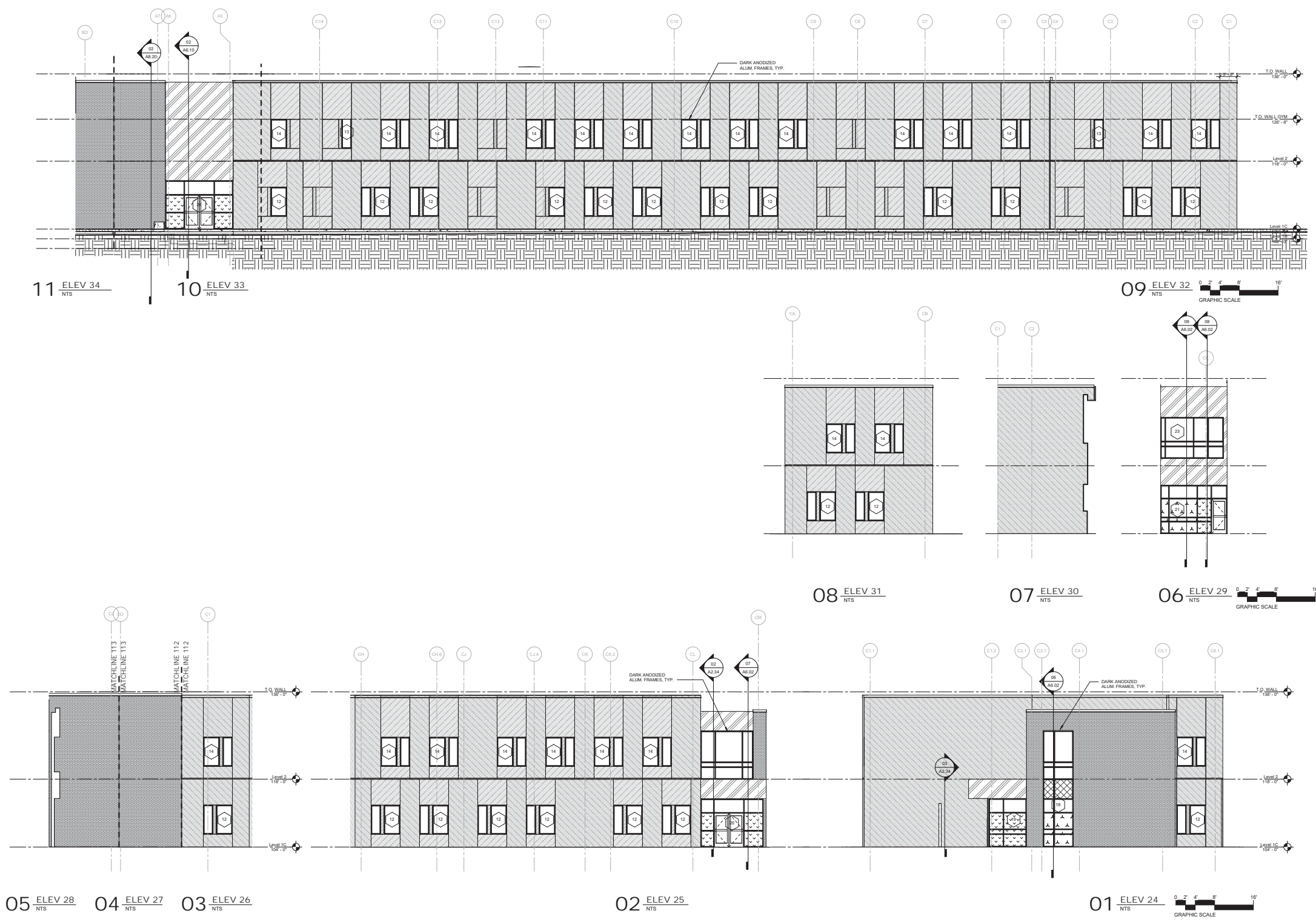
ISSUE
SITE SUBMITTAL
DRAWING PACKAGE

SHEET TITLE
EXTERIOR
ELEVATIONS

SHEET NO.
A5.02

PLAUT DATE: 12/18/2019 10:42 AM
DRAWING REVISION: 12/18/2019 10:42 AM

EXTERIOR MATERIALS REFERENCE			
FINISH INFORMATION	GRAPHIC SYMBOL	FINISH INFORMATION	GRAPHIC SYMBOL
GL-01 TYPE: SOLARBAN 70 MANUF: VITRO COLOR: SCARLETT SIZE: 110" COMMENT: TYP. EXT GLAZING U.G.D.		GL-06 TYPE: STORM RATED GLASS MANUF: MATCH GL-01 COLOR: TBS SIZE: 110" COMMENT: BATED TOC S99 2014	
GL-02 TYPE: SOLARBAN 70 MANUF: VITRO COLOR: SCARLETT SIZE: 110" COMMENT: TYP. EXT SPANDREL GLAZING		MP-01 TYPE: METAL PANEL MANUF: TBS COLOR: TBS SIZE: 110" COMMENT: REF. ELEVATIONS	
GL-03 TYPE: SECURITY III LEVEL 8A MANUF: MATCH GL-01 COLOR: MATCH GL-01 COMMENT: 1/2" GLASS W/ 1/2" AIRSPACE AND 7 LAYERS 1/4" LAMINATED GLASS 5000 CLEAR PVB(W) BALLISTIC FILM ON #4 FACE		ASF-01 TYPE: ARCH EXP. STRUC. STEEL MANUF: TBS COLOR: TBS SIZE: N/A COMMENT: N/A	
GL-04 TYPE: SECURITY III LEVEL 1 MANUF: MATCH GL-01 COLOR: MATCH GL-01 COMMENT: 1/2" GLASS W/ 1/2" AIRSPACE AND 7 LAYERS 1/4" LAMINATED GLASS 5000 CLEAR PVB(W) BALLISTIC FILM ON #4 FACE		BR-01 TYPE: BRICK VENEER MANUF: TBS COLOR: TBS SIZE: MODULAR COMMENT: RUNNING BOND	
		BR-02 TYPE: BRICK VENEER MANUF: TBS COLOR: TBS SIZE: MODULAR COMMENT: RUNNING BOND	
		BR-03 TYPE: BRICK VENEER MANUF: TBS COLOR: TBS SIZE: MODULAR COMMENT: RUNNING BOND	
		BR-04 TYPE: BRICK VENEER MANUF: MATCH BR-03 COLOR: MATCH BR-03 SIZE: MODULAR COMMENT:	
		BR-05 TYPE: BRICK VENEER MANUF: MATCH BR-04 COLOR: MATCH BR-04 SIZE: MODULAR COMMENT: FLEMISH BOND	
		BR-06 TYPE: BRICK VENEER MANUF: MATCH BR-01 COLOR: MATCH BR-01 SIZE: MODULAR COMMENT: STACK BOND	
		BR-07 TYPE: BRICK VENEER MANUF: MATCH BR-03 COLOR: MATCH BR-03 SIZE: MODULAR COMMENT: STACK BOND	
		BR-08 TYPE: BRICK VENEER MANUF: MATCH BR-09 COLOR: MATCH BR-09 SIZE: MODULAR COMMENT: ROWLOCK	
		BR-09 TYPE: BRICK VENEER MANUF: MATCH BR-09 COLOR: MATCH BR-09 SIZE: MODULAR COMMENT: SOLDIER BOND	



ARCHITECT
 HKS, INC.
 350 N SAINT PAUL ST
 SUITE 500
 DALLAS, TX 75201

CIVIL ENGINEER
 RAYMOND L. GOODSON JR., INC.
 12001 N. CENTRAL EXPRESSWAY, SUITE 300
 DALLAS, TEXAS 75243

LANDSCAPE
 OCA LANDSCAPE ARCHITECTS, INC.
 12100 HOLLOWAY RD., SUITE 149
 DALLAS, TX 75228

STRUCTURAL
 JQ INFRASTRUCTURE, LLC
 100 GLASS STREET, SUITE 201
 DALLAS, TEXAS 75201

MEP
 ESTES MCCLURE & ASSOCIATES, INC.
 3605 WEST WAY STREET
 TYLER, TX 75703

FOOD SERVICE
 JMK FOODSERVICE CONSULTING & DESIGN, LLC.
 3431 LAKEVIEW PKWY., STE 205
 ROWLETT, TX 75088

BISD

SMITHFIELD ELEMENTARY SCHOOL CAMPUS
 REPLACEMENT AND THREE HIGH SCHOOL FINE
 ARTS AUDITORIUM UPGRADES

OWNER
 BROOKVILLE INDEPENDENT SCHOOL DISTRICT
 6125 EAST BELKNAP
 HALTOM CITY, TX 76117

INTERIM REVIEW ONLY

These documents are incomplete, and are intended for interim review only and are not intended for regulatory approval, permit, or construction purposes.

Author: MARK VANDERVOORT
 Auth. Reg. No. 08114
 Date: 11/15/2019

KEY PLAN

REVISION NO.	DESCRIPTION	DATE

PROJECT CASE NUMBER
 SP 2019-18

HKS PROJECT NUMBER
 22526.000

DATE
 12/18/19

ISSUE
 SITE SUBMITTAL
 DRAWING PACKAGE
 SHEET TITLE
 EXTERIOR
 ELEVATIONS

SHEET NO.
A5.03



ARCHITECT
 HKS, INC.
 350 N SAINT PAUL ST
 SUITE 900
 DALLAS, TX 75201

CIVIL ENGINEER
 RAYMOND L. GOODSON, JR., INC.
 12001 N CENTRAL EXPRESSWAY, SUITE 300
 DALLAS, TEXAS 75243

LANDSCAPE
 OCA LANDSCAPE ARCHITECTS, INC.
 12700 HOLLOWAY RD., SUITE 149
 DALLAS, TX 75228

STRUCTURAL
 JQ INFRASTRUCTURE, LLC
 100 GLASS STREET, SUITE 201
 DALLAS, TEXAS 75201

MEP
 ESTES MCCLURE & ASSOCIATES, INC.
 3608 WEST WAY STREET
 TYLER, TX 75703

FOOD SERVICE
 AM FOODSERVICE CONSULTING & DESIGN, LLC
 3431 LAKEVIEW PKWY, STE 205
 ROWLETT, TX 75088

SMITHFIELD ELEMENTARY SCHOOL CAMPUS
 REPLACEMENT AND THREE HIGH SCHOOL FINE
 ARTS AUDITORIUM UPGRADES



OWNER
 BROOKVILLE INDEPENDENT SCHOOL DISTRICT
 6125 EAST BELLAIR
 HALTOM CITY, TX 76117

INTERIM REVIEW ONLY
 These documents are incomplete, and
 are intended for interim review only and
 are not intended for regulatory approval,
 permit, or construction purposes.
 Architect: MARK VANDER VOORT
 Arch. Reg. No.: 70814
 Date: 11/15/2019

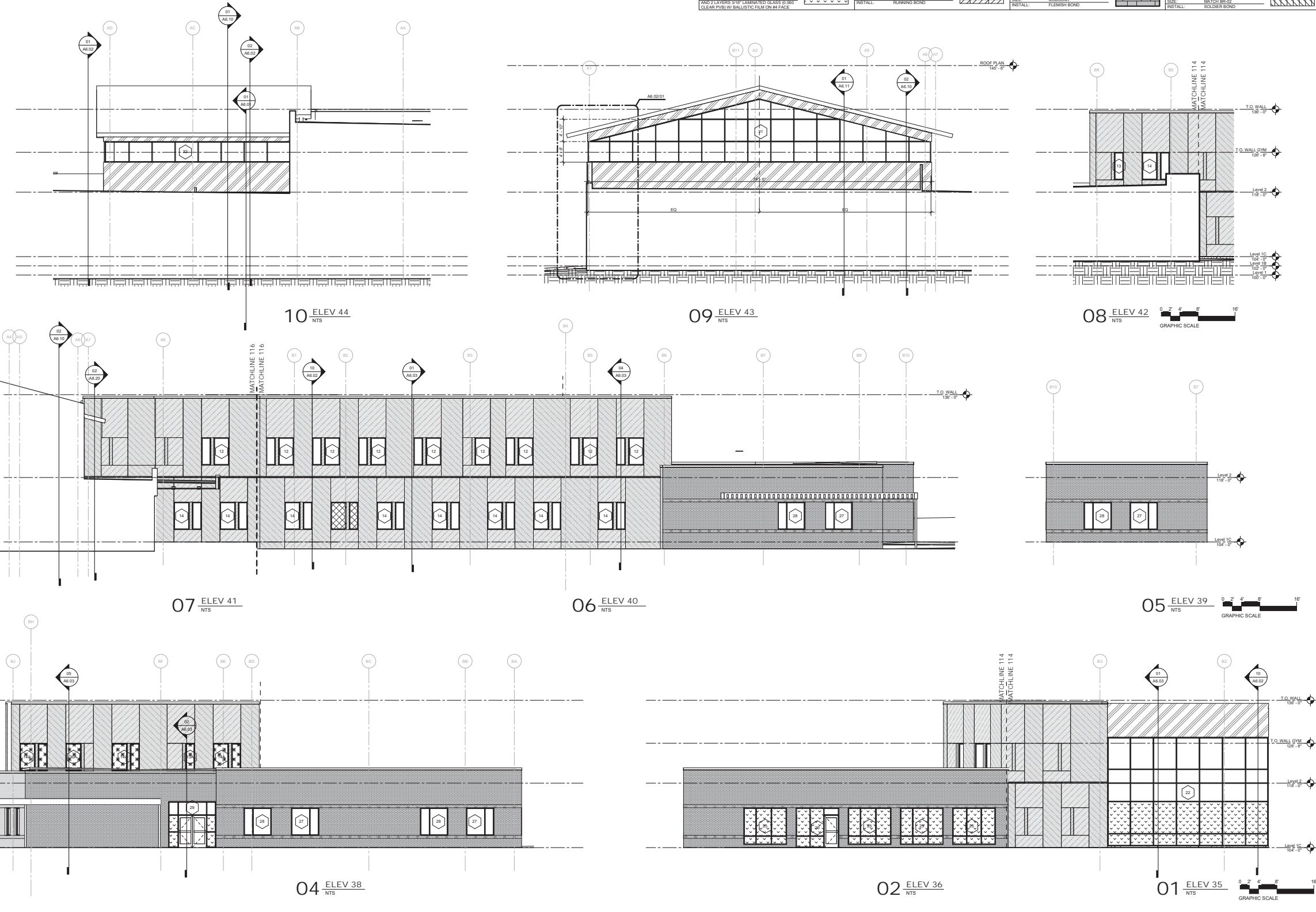
KEY PLAN

REVISION NO.	DESCRIPTION	DATE

PROJECT CASE NUMBER
 SP 2019-18
 HKS PROJECT NUMBER
 22526.000
 DATE
 12/18/19
 ISSUE
 SITE SUBMITTAL
 DRAWING PACKAGE
 SHEET TITLE
 EXTERIOR
 EXTERIORS

SHEET NO.
A5.04

EXTERIOR MATERIALS REFERENCE			
FINISH INFORMATION	GRAPHIC SYMBOL	FINISH INFORMATION	GRAPHIC SYMBOL
QL-01 TYPE: SOLARBAN 70 MANUF: VITRO COLOR: SOLARBLE COMMENT: 1/8" EXT GLAZING U.G.D.		QL-06 TYPE: STORM RATED GLASS MANUF: TSO COLOR: MATCH QL-01 COMMENT: BATED TOC 500 2014	
QL-02 TYPE: SOLARBAN 70 MANUF: VITRO COLOR: SOLARBLE COMMENT: 1/8" EXT SPANDREL GLAZING		MP-01 TYPE: METAL PANEL MANUF: TSO COLOR: TSO COMMENT: SEE ELEVATIONS INSTALL: TSO	
QL-03 TYPE: SECURITY 90 LEVEL 9A MANUF: MATCH QL-01 COLOR: MATCH QL-01 COMMENT: 1/2" GLASS W/ 1/2" AIRSPACE AND 2 LAYERS 1/8" LAMINATED GLASS 5/16" CLEAR PVB W/ BALLISTIC FILM ON B4 FACE		ASF-01 TYPE: ARCH EXP STRUCT STEEL MANUF: TSO COLOR: TSO SIZE: N/A INSTALL: N/A	
QL-04 TYPE: SECURITY 90 LEVEL 1 MANUF: MATCH QL-01 COLOR: MATCH QL-01 COMMENT: 1/2" GLASS W/ 1/2" AIRSPACE AND 2 LAYERS 1/8" LAMINATED GLASS 5/16" CLEAR PVB W/ BALLISTIC FILM ON B4 FACE		BR-01 TYPE: BRICK VENEER MANUF: TSO COLOR: TSO SIZE: MODULAR INSTALL: RUNNING BOND	
BR-02 TYPE: BRICK VENEER MANUF: TSO COLOR: TSO SIZE: MODULAR INSTALL: RUNNING BOND		BR-03 TYPE: BRICK VENEER MANUF: TSO COLOR: TSO SIZE: MODULAR INSTALL: RUNNING BOND	
BR-04 TYPE: BRICK VENEER MANUF: MATCH BR-03 COLOR: MATCH BR-03 SIZE: MODULAR INSTALL: FLUSH BOND		BR-05 TYPE: BRICK VENEER MANUF: MATCH BR-03 COLOR: MATCH BR-03 SIZE: MODULAR INSTALL: FLUSH BOND	
BR-06 TYPE: BRICK VENEER MANUF: MATCH BR-01 COLOR: MATCH BR-01 SIZE: MODULAR INSTALL: STACK BOND		BR-07 TYPE: BRICK VENEER MANUF: MATCH BR-03 COLOR: MATCH BR-03 SIZE: MODULAR INSTALL: STACK BOND	
BR-08 TYPE: BRICK VENEER MANUF: MATCH BR-03 COLOR: MATCH BR-03 SIZE: MODULAR INSTALL: BOLDER BOND		BR-09 TYPE: BRICK VENEER MANUF: MATCH BR-03 COLOR: MATCH BR-03 SIZE: MODULAR INSTALL: BOLDER BOND	



PLOT DATE: 12/18/2019 10:58:12 AM
 USER: KATIE@HKS.COM
 PLOT DEVICE: HP DesignJet 5000

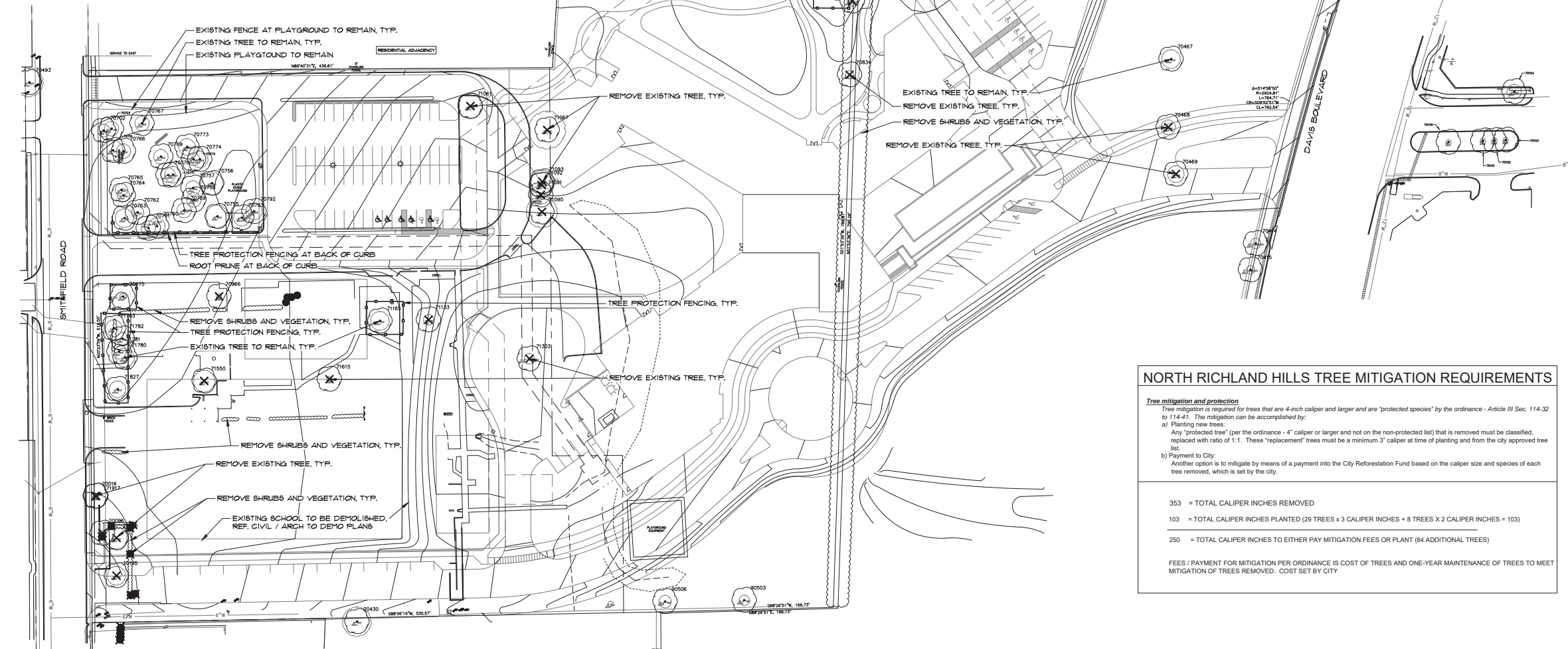
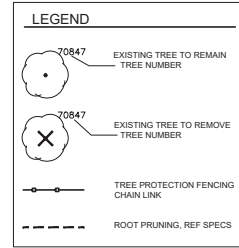
Point #	Size & Type	Remove/Remain	Cal.in. Remove
20096	T-OAK 5	REMOVE	5
20195	T-OAK 18	REMOVE	18
20196	T-OAK 21	REMOVE	21
20430	T-OAK 28	Remain	
70100	T-CRE	Remain	
70101	T-CRE	Remain	
70102	T-CRE	Remain	
70103	T-CRE	Remain	
70154	T-OAK 14	Remain	
70414	T-HAC 10	Remain	
70415	T-HAC 8	Remain	
70467	T-OAK 18	Remain	
70468	T-OAK 14	Remain	
70469	T-OAK 16	Remain	
70477	T-OAK 24	Remain	
70478	T-CHI 8 8	Remain	
70480	T-OAK 20	Remain	
70493	T-OAK 27	Remain	
70701	T-OAK 20	Remain	
70702	T-OAK 12	Remain	
70703	T-OAK 14 12	Remain	
70755	T-OAK 22	Remain	

Point #	Size & Type	Remove/Remain	Cal.in. Remove
70756	T-OAK 22	Remain	
70757	T-OAK 14	Remain	
70758	T-OAK 14	Remain	
70759	T-OAK 14	Remain	
70760	T-OAK 16	Remain	
70761	T-OAK 14	Remain	
70762	T-OAK 12	Remain	
70763	T-OAK 18	Remain	
70764	T-OAK 12	Remain	
70765	T-OAK 12	Remain	
70766	T-OAK 14	Remain	
70767	T-OAK 14	Remain	
70769	T-OAK 14	Remain	
70770	T-OAK 14	Remain	
70771	T-OAK 16	Remain	
70772	T-OAK 12	Remain	
70773	T-OAK 16	Remain	
70774	T-OAK 16	Remain	
70792	T-OAK 16	Remain	
70793	T-OAK 16	Remain	
70798	T-OAK 14	Remain	
70799	T-OAK 14	Remain	

Point #	Size & Type	Remove/Remain	Cal.in. Remove
70802	T-OAK 14	Remain	
70803	T-OAK 14	Remain	
70804	T-OAK 14	Remain	
70815	T-OAK 30	Remain	
70820	T-OAK /24	REMOVE	24
70830	T-OAK /30	REMOVE	30
70831	T-CED /10	REMOVE	10
70834	T-OAK 8 8	REMOVE	8
70847	T-OAK 16	REMOVE	16
70854	T-OAK 30	Remain	
70966	T-CRE	REMOVE	4
70975	T-OAK 6	Remain	
71061	T-OAK 24	REMOVE	24
71067	T-OAK 36	REMOVE	36
71090	T-OAK 30	REMOVE	30
71091	T-OAK 18	REMOVE	18
71092	T-OAK 24	REMOVE	24
71093	T-OAK 22	REMOVE	22
71133	T-OAK 10	REMOVE	10

Point #	Size & Type	Remove/Remain	Cal.in. Remove
71165	T-ELM 18	Remain	
71303	T-HAC 10 10 10	REMOVE, not prot	0
71550	T-OAK 21	REMOVE	21
71615	T-CRE	REMOVE	4
71780	T-OAK 18	Remain	
71781	T-OAK 14	Remain	
71782	T-OAK 12	Remain	
71783	T-OAK 16	Remain	
71827	T-OAK 16	Remain	
71917	T-CRE	REMOVE	4
90503	10"TREE	Remain	
90506	12"TREE	Remain	

TOTAL CAL INCHES REMOVED = 353 CALIPER INCHES



NORTH RICHLAND HILLS TREE MITIGATION REQUIREMENTS

Tree mitigation and protection
 Tree mitigation is required for trees that are 4-inch caliper and larger and are "protected species" by the ordinance - Article III Sec. 114-32 to 114-41. The mitigation can be accomplished by:

- Planting new trees:
 Any "protected tree" (per the ordinance - 4" caliper or larger and not on the non-protected list) that is removed must be classified, replaced with ratio of 1:1. These "replacement" trees must be a minimum 3" caliper at time of planting and from the city approved tree list.
- Payment to City:
 Another option is to mitigate by means of a payment into the City Reforestation Fund based on the caliper size and species of each tree removed, which is set by the city.

353 = TOTAL CALIPER INCHES REMOVED
 103 = TOTAL CALIPER INCHES PLANTED (29 TREES x 3 CALIPER INCHES + 8 TREES x 2 CALIPER INCHES = 103)
 250 = TOTAL CALIPER INCHES TO EITHER PAY MITIGATION FEES OR PLANT (84 ADDITIONAL TREES)

FEES / PAYMENT FOR MITIGATION PER ORDINANCE IS COST OF TREES AND ONE-YEAR MAINTENANCE OF TREES TO MEET MITIGATION OF TREES REMOVED. COST SET BY CITY

1 SMITHFIELD ELEMENTARY SCHOOL - TREE PROTECTION AND REMOVAL PLAN
 1" = 50'-0"
 0 25 50 100ft NORTH

HKS

ARCHITECT
 HKS, INC.
 300 N. SAINT PAUL ST.
 SUITE 300
 DALLAS, TX 75201

CIVIL ENGINEER
 RAMOND L. GOODSON JR., INC.
 12001 N. CENTRAL EXPRESSWAY, SUITE 300
 DALLAS, TEXAS 75243

LANDSCAPE
 OCA LANDSCAPE ARCHITECTS, INC.
 12700 HALICREST RD, SUITE 148
 DALLAS, TX 75230

STRUCTURAL
 JQ INFRASTRUCTURE, LLC
 100 GLASS STREET, SUITE 201
 DALLAS, TEXAS 75201

MEP
 ESTER MCCLURE & ASSOCIATES, INC.
 300 WEST WAY STREET
 TYLER, TX 75703

FOOD SERVICE
 JRM FOODSERVICE CONSULTING & DESIGN, LLC
 343 LARVIEW PROXY, STE 205
 ROWLETT, TX 75088

SMITHFIELD ELEMENTARY SCHOOL CAMPUS
 REPLACEMENT AND THREE HIGH SCHOOL FINE
 ARTS AUDITORIUM UPGRADES

OWNER
 BROOKVILLE INDEPENDENT SCHOOL DISTRICT
 8125 EAST BROWNWOOD
 HALTOM CITY, TX 76117

INTERIM REVIEW ONLY
 These documents are incomplete, and are released for interim review only and are not intended for regulatory approval, permit, or construction purposes.
 Architect: [Signature]
 Arch. Reg. No.: [Number]
 Date: 12-19-2019

KEY PLAN

REVISION NO. DESCRIPTION DATE

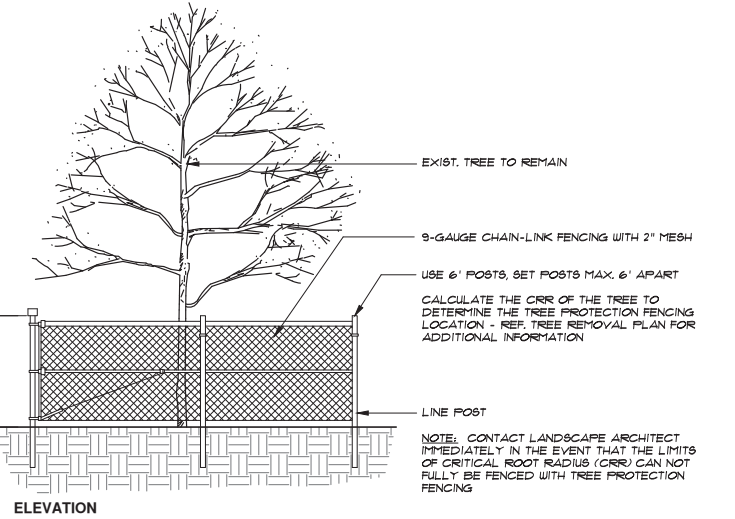
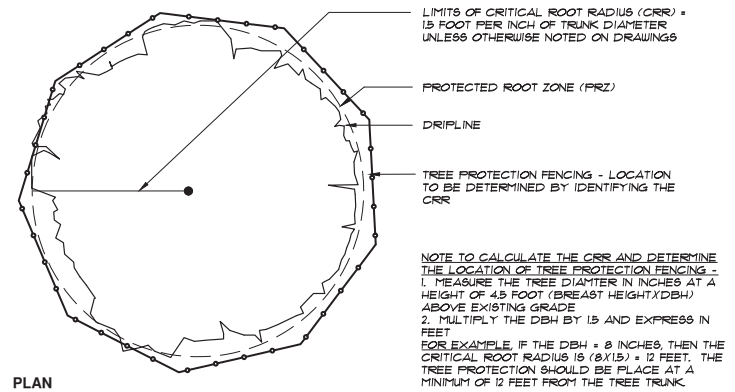
PROJECT CASE NUMBER
 SP 2019-18
 HKS PROJECT NUMBER
 22526.000
 DATE
 18 DECEMBER, 2019
 ISSUE
 75% CONSTRUCTION DOCUMENTS
 SHEET TITLE
 TREE PROTECTION AND REMOVAL PLAN
 SHEET NO.
L1.00

TREE PROTECTION & FENCING NOTES

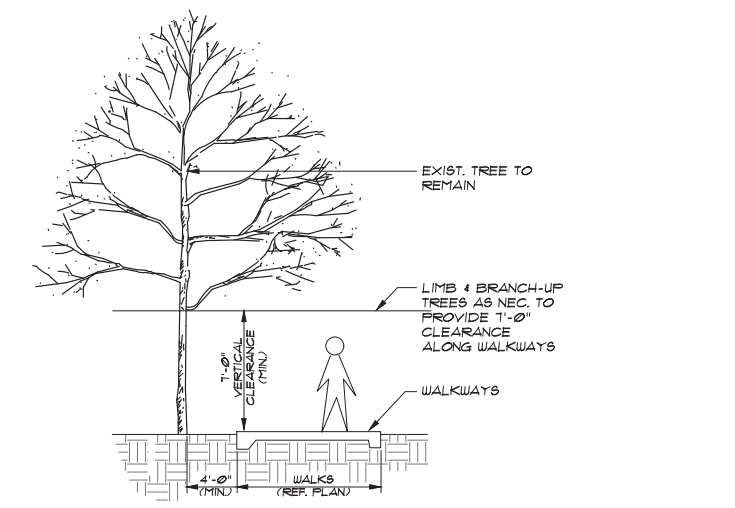
- TREE PROTECTION MUST OCCUR PRIOR TO BEGINNING SITE WORK.
- ALL EXISTING TREES ARE TO REMAIN AND BE PROTECTED DURING CONSTRUCTION UNLESS DESIGNATED AS "TO BE REMOVED" ON THE DRAWINGS. CHAINLINK OR ORANGE SAFETY FENCING (MIN. 4'-0" HEIGHT) SHALL BE INSTALLED AS INDICATED ON PLANS AT THE DRIPLINE OR THE CRITICAL ROOT ZONE (WHICHEVER IS GREATER) OF THE TREE OR GROUP OF TREES TO REMAIN.
- PARKING OF VEHICLES OR PERFORMING WORK WITHIN THESE AREAS OTHER THAN AS SHOWN ON THE PLANS WILL NOT BE ALLOWED. THE TREE PROTECTION SHALL REMAIN DURING THE ENTIRE CONSTRUCTION. OTHER TREE PROTECTION MEASURES SHALL BE IN ACCORDANCE WITH THE CITY OF FORT WORTH STANDARDS AND ORDINANCES.
- THE CONTRACTOR SHALL TAKE CARE IN MINIMIZING THE DISTURBANCE TO THE EXISTING TREE TRUNKS AND ROOT SYSTEMS. ALL DEMOLITION AND TRASH REMOVAL ADJACENT TO EXISTING TREES SHALL BE COMPLETED USING HAND TOOLS WHERE POSSIBLE. NO LARGE EQUIPMENT OR ANY EQUIPMENT WITH TRACKS SHALL BE ALLOWED UNDER THE DRIPLINE OF ANY EXISTING TREES TO REMAIN. THERE SHALL BE NO STORAGE OF MATERIAL WITHIN THE DRIPLINE OF TREES TO REMAIN.
- DISPOSAL OF WASTE MATERIAL, SUCH AS, BUT NOT LIMITED TO: EXCESS SOIL, PAINT, ASPHALT, OIL, SOLVENTS, CONCRETE, MORTAR, ETC. WITHIN THE DRIPLINE OF THE EXISTING TREES SHALL NOT BE ALLOWED.
- NO ATTACHMENTS OR WIRES OF ANY KIND, OTHER THAN THOSE OF A PROTECTIVE NATURE, SHALL BE ATTACHED TO ANY TREE.
- NO FILL OR EXCAVATION OF ANY NATURE SHALL OCCUR WITHIN THE DRIPLINE OF A TREE TO REMAIN OR BE PROTECTED UNLESS SPECIFIED ON THE PLANS. DO NOT STOCKPILE SUB-SOILS UNDER THE TREE DRIPLINE. ALL EXCAVATION DONE WITHIN THE TREE DRIPLINE SHALL BE HAND DUG UNDER THE SUPERVISION OF THE LANDSCAPE ARCHITECT OR THE OWNER'S REPRESENTATIVE.
- TREE PROTECTION SHALL REMAIN IN-PLACE UNTIL ALL CONSTRUCTION ACTIVITIES HAVE BEEN COMPLETED AND ONLY REMOVED UPON APPROVAL BY THE LANDSCAPE ARCHITECT OR THE OWNER'S REPRESENTATIVE.
- WHERE NEW UTILITY LINES ARE CONSTRUCTED WITHIN THE DRIP LINE OF EXISTING TREES, MECHANICALLY BORE THE NEW UTILITY LINE OR ROOT PRUNE THE EXISTING TREE. MECHANICALLY BORE THE UTILITY LINE IF IT IS WITHIN THE DRIP LINE AND WITHIN FIFTEEN FEET OF THE TRUNK OF THE TREE. ROOT PRUNE THE TREE IF THE UTILITY LINE IS WITHIN THE DRIP LINE BUT GREATER THAN FIFTEEN FEET AWAY FROM THE TREE'S TRUNK. REFER TO SPECIFICATIONS FOR BORING AND ROOT PRUNING REQUIREMENTS.
- WHERE NEW IRRIGATION LINES ARE CONSTRUCTED WITHIN THE DRIP LINE OF EXISTING TREES, HAND DIG OR AIR SPADE LINE IF IT IS WITHIN THE DRIP LINE AND WITHIN FIFTEEN FEET OF THE TRUNK OF THE TREE. ROOT PRUNE THE TREE IF THE LINE IS WITHIN THE DRIP LINE BUT GREATER THAN FIFTEEN FEET AWAY FROM THE TREE'S TRUNK. REFER TO SPECIFICATIONS FOR HAND DIGGING, AIR SPADING, AND ROOT PRUNING REQUIREMENTS.

REFERENCE SPECIFICATIONS FOR REPLACEMENT COSTS OF EXISTING TREES DAMAGED OR KILLED DURING CONSTRUCTION ACTIVITIES.

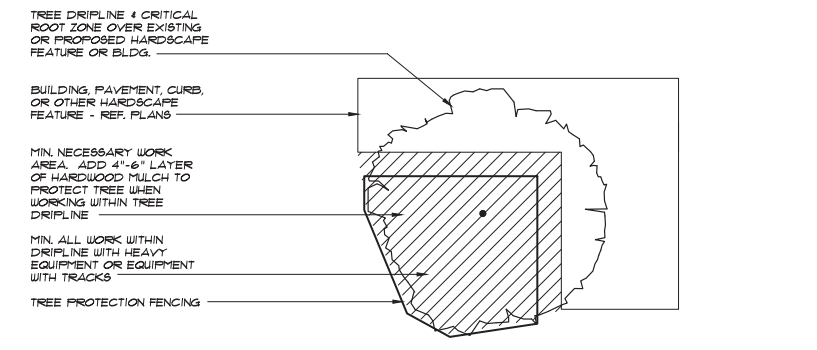
NOTE: DO NOT PARK, DRIVE, ETC. BENEATH ANY EXISTING TREE TO REMAIN, INCLUDING THOSE NOT SHOWN WITH TREE PROTECTION FENCING. ALL EXISTING TREES TO REMAIN ON SITE SHALL BE PROTECTED, WHETHER OR NOT FENCING IS SHOWN.



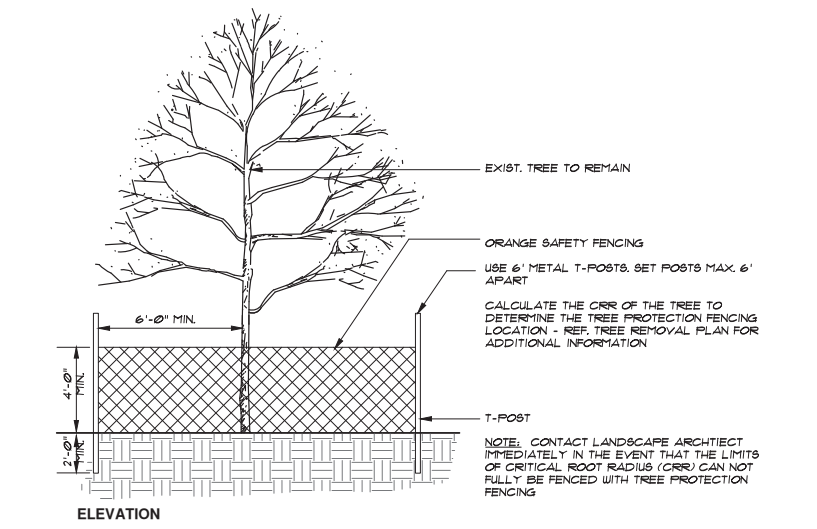
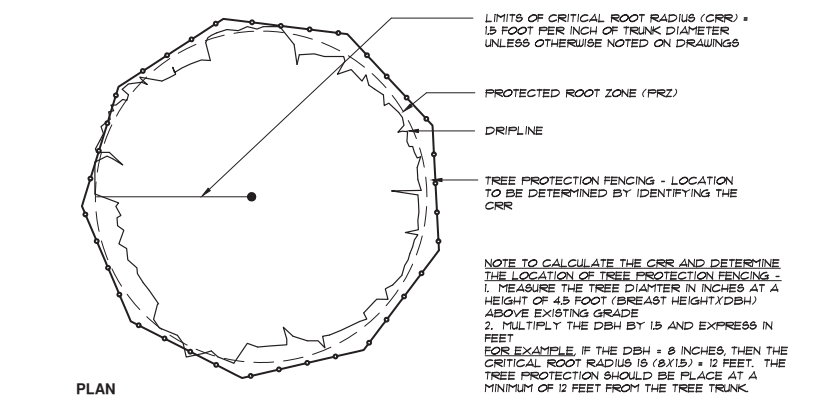
TREE PROTECTION FENCIN - CHAIN LINK FENCE
NOT TO SCALE



TREE CLEARANCE AT ALL
NOT TO SCALE



1 TREE PROT FENCE NEAR CONSTR CTION ACTIVITY
NOT TO SCALE



2 TREE PROTECTION FENCIN - ORAN E SAFETY FENCE
NOT TO SCALE



ARCHITECT
HKS, INC.
300 N GANT PAUL ST
SUITE 900
DALLAS, TX 75201

CIVIL ENGINEER
RAYMOND L. GOODSON JR., INC.
12001 N. CENTRAL EXPRESSWAY, SUITE 300
DALLAS, TEXAS 75243

LANDSCAPE
OCA LANDSCAPE ARCHITECTS, INC.
12700 HALLOCKST RD, SUITE 148
DALLAS, TX 75230

STRUCTURAL
JQ INFRASTRUCTURE, LLC
100 GLASS STREET, SUITE 201
DALLAS, TEXAS 75201

MEP
ESTERIS MCCLURE & ASSOCIATES, INC.
3008 WEST WALK STREET
TYLER, TX 75703

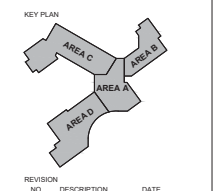
FOOD SERVICE
JRM FOODSERVICE CONSULTING & DESIGN, LLC
3431 LAKEVIEW PKWY, STE 205
ROWLETT, TX 75088



SMITHFIELD ELEMENTARY SCHOOL CAMPUS
REPLACEMENT AND THREE HIGH SCHOOL FINE
ARTS AUDITORIUM UPGRADES

OWNER
BROOKVILLE INDEPENDENT SCHOOL DISTRICT
8125 EAST BROWLAMP
HALTOM CITY, TX 76117

INTERIM REVIEW ONLY
These documents are incomplete, and are released for interim review only and are not intended for regulatory approval, permit, or construction purposes.
Architect: [Signature]
Arch. Reg. No.: [Number]
Date: 12.19.2019



REVISION NO.	DESCRIPTION	DATE

PROJECT CASE NUMBER
SP 2019-18

HKS PROJECT NUMBER
22526.000

DATE
18 DECEMBER, 2019

ISSUE
75% CONSTRUCTION DOCUMENTS

SHEET TITLE
TREE PROTECTION AND REMOVAL DETAILS

SHEET NO.



ARCHITECT
HKS, INC.
300 N. SAINT PAUL ST.
SUITE 300
DALLAS, TX 75201

CIVIL ENGINEER
RAYMOND L. GOODSON JR., INC.
12001 N. CENTRAL EXPRESSWAY, SUITE 300
DALLAS, TEXAS 75243

LANDSCAPE
OCA LANDSCAPE ARCHITECTS, INC.
12700 HALLOCKST RD, SUITE 140
DALLAS, TX 75220

STRUCTURAL
JQ INFRASTRUCTURE, LLC
100 GLASS STREET, SUITE 201
DALLAS, TEXAS 75201

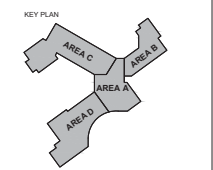
MEP
ESTER MCCLURE & ASSOCIATES, INC.
300 WEST WAY STREET
TYLER, TX 75703

FOOD SERVICE
JMK FOODSERVICE CONSULTING & DESIGN, LLC
3431 LAKEVIEW PKWY, STE 205
ROWLETT, TX 75088

SMITHFIELD ELEMENTARY SCHOOL CAMPUS
REPLACEMENT AND THREE HIGH SCHOOL FINE
ARTS AUDITORIUM UPGRADES

OWNER
BROOKVILLE INDEPENDENT SCHOOL DISTRICT
8125 EAST BROWLAMP
HALTOM CITY, TX 76117

INTERIM REVIEW ONLY
These documents are incomplete, and are released for interim review only and are not intended for regulatory approval, permit, or construction purposes.
Architect: [Signature]
Arch. Reg. No.: [Number]
Date: 12.18.2019



REVISION NO.	DESCRIPTION	DATE

PROJECT CASE NUMBER
SP 2019-18

HKS PROJECT NUMBER
22526.000

DATE
18 DECEMBER, 2019

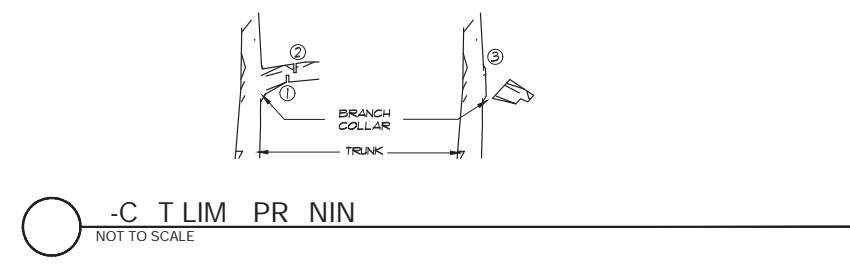
ISSUE
75% CONSTRUCTION DOCUMENTS

SHEET TITLE
TREE PROTECTION AND REMOVAL DETAILS

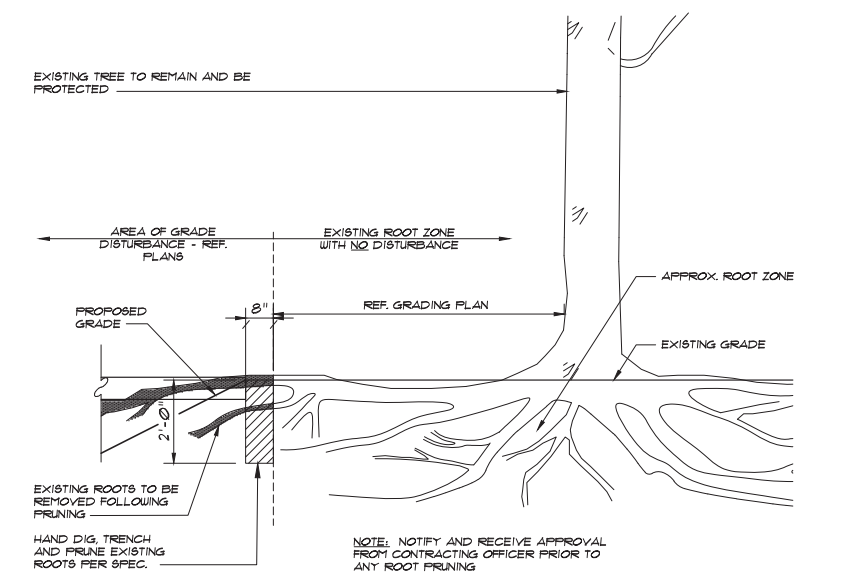
SHEET NO.

CASE SP 2019-18
© 2019 HKS, INC.

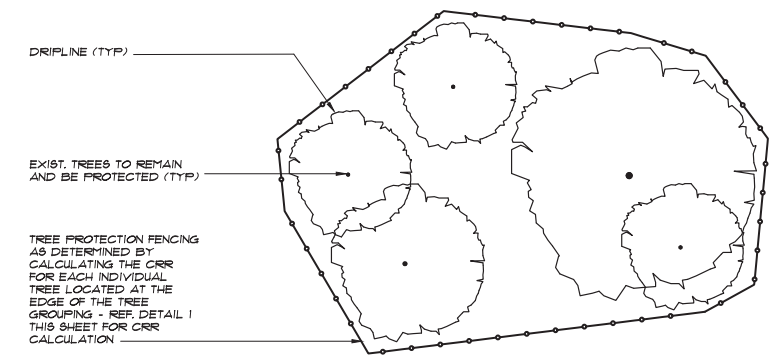
L1.02



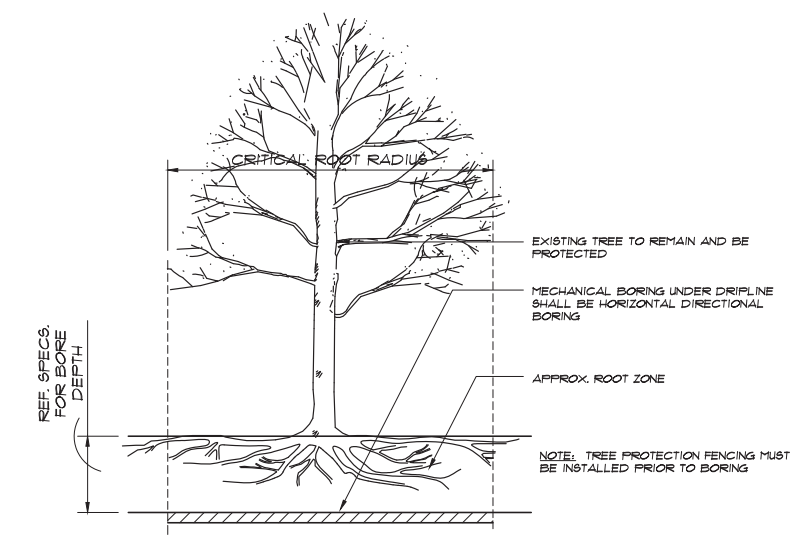
1 -C T LIM PR NIN
NOT TO SCALE



2 ROOT PR NIN AT E ISTIN TREES - SECTION
NTS



1 TREE PROT FENCE NEAR CONSTR CTION ACTIVITY
NOT TO SCALE



2 ORIN NDER OR NEAR CRO N DRIPLINE - ELEVATION
NOT TO SCALE

USE TO REMOVE TREE LIMBS AS NECESSARY. COMPLY WITH HORTICULTURAL PRACTICES.

STEP 1: SAW BOTTOM CUT APPROX. 6-12" AWAY FROM TRUNK AND APPROX. 1/3 OF THE WAY THROUGH THE LIMB.

STEP 2: MAKE A SECOND CUT APPROX. 3" FURTHER FROM THE TRUNK THAN THE FIRST CUT UNTIL THE WEIGHT OF THE BRANCH PULLS THE BRANCH DOWN.

STEP 3: CUT THE STUB BACK TO THE COLLAR OF THE BRANCH - DO NOT CUT FLUSH WITH TRUNK.

REMOVE AND DISPOSE OF ALL BRANCHES PER NOTES ON SHEET L1 AND SPECIFICATIONS.

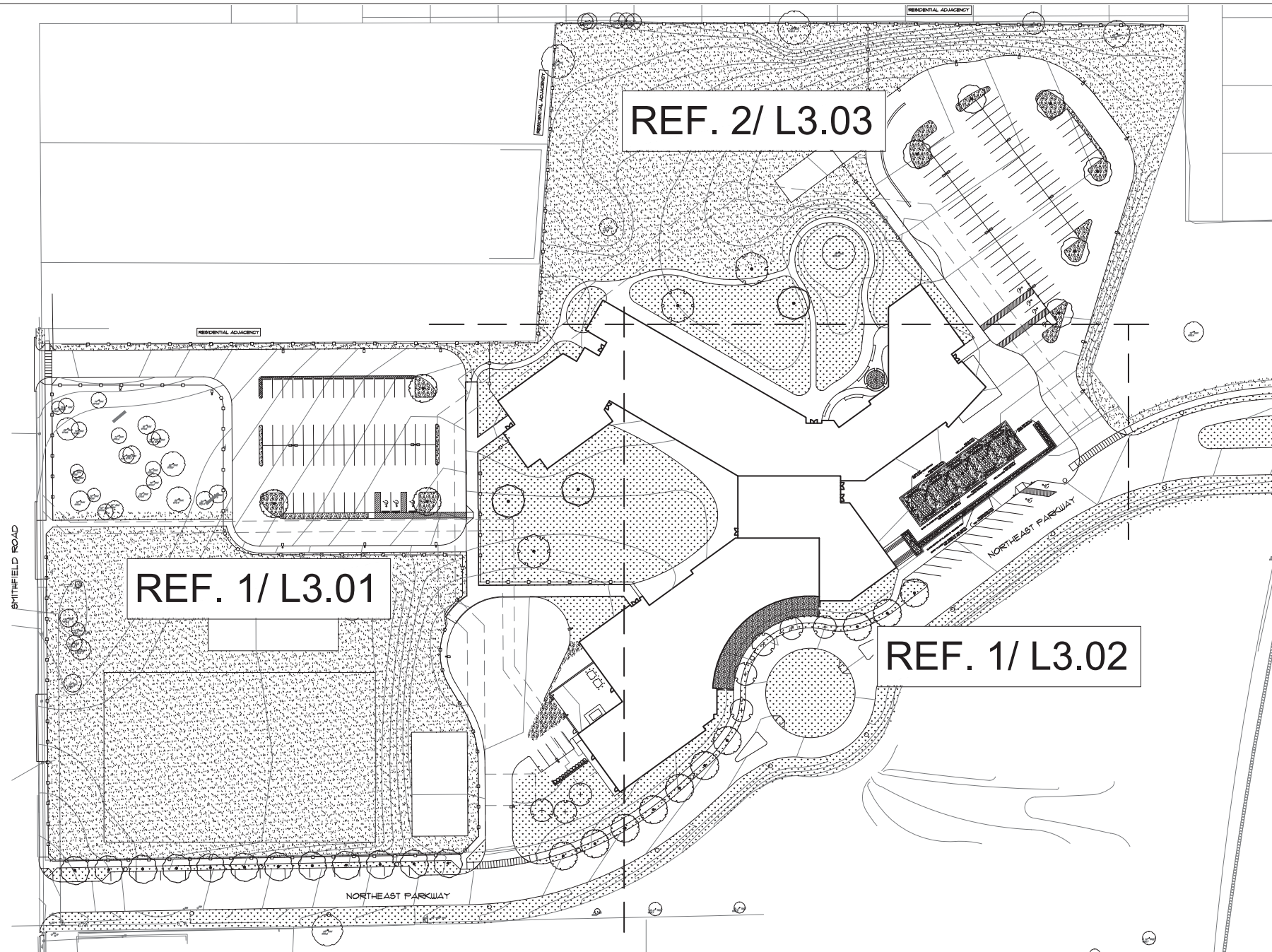
NOTE: PRIOR TO LIMB REMOVAL ON EXISTING TREES, GET WRITTEN PERMISSION AND FIELD VERIFICATION FROM OWNER'S REPRESENTATIVE.

PLOT DATE: 12/18/2019

LEGEND		
TREES	CODE	TREE
		EXISTING TREE TO REMAIN
	CE	CEDAR ELM
	CP	CHINESE PISTACHE
	LO	LIVE OAK
	SO	SHUMARD RED OAK
	CMN	CRAPE MYRTLE
SHRUBS	CODE	SHRUB
	RY	RED YUCCA
	IH	INDIAN HAWTHORN
	DBH	DWARF BURFORD HOLLY PARKING LOT SCREENING SHRUB
TURF	CODE	TURF / LAWN
	BG2	BERMUDA GRASS (HYDROMULCH)
	BG1	BERMUDA GRASS (SOLID SOD)
GRND COVER	CODE	DESCRIPTION
	DG	DECOMPOSED GRANITE AGGREGATE
	LS	LIRIOPE SPICATA
MATERIAL	CODE	DESCRIPTION
		CONC. MOW STRIP / EDGING

IRRIGATION NOTES

- ALL SOLID SOD AREAS TO RECEIVE PERMANENT IRRIGATION UNLESS OTHERWISE NOTED
- PLAY / SOCCER FIELD TO RECEIVE PERMANENT IRRIGATION AS ADD ALTERNATE
- ALL SEEDED AREAS TO RECEIVE TEMPORARY IRRIGATION TO ESTABLISHMENT UNLESS OTHERWISE NOTED



1 SMITHFIELD ELEMENTARY SCHOOL - PLANTING PLAN - EY PLAN
1" = 50'-0"

LANDSCAPE PLANTING NOTES

- FINAL GRADING SHALL BE INSTALLED BY THE CONTRACTOR AND APPROVED BY THE OWNER'S REPRESENTATIVE IN THE FIELD PRIOR TO PLANTING OR PLANTING LAYOUT.
- TREES ARE TO BE CENTERED IN EACH TREE PLANTER. CONTRACTOR SHALL STAKE OUT ALL TREE LOCATIONS FOR REVIEW AND APPROVAL BY THE OWNER'S REPRESENTATIVE PRIOR TO EXCAVATION. OWNER'S REPRESENTATIVE RESERVES THE RIGHT TO ADJUST TREES TO EXACT LOCATION IN FIELD.
- UNLESS DIMENSIONED ON THE PLAN, ALL PROPOSED TREE LOCATIONS ARE DIAGNOSTIC. CONTRACTOR SHALL STAKE OUT ALL INFORMAL TREE LOCATIONS IN THE FIELD USING COLORED FLAGS FOR REVIEW AND APPROVAL BY THE OWNER'S REPRESENTATIVE PRIOR TO EXCAVATION. OWNER'S REPRESENTATIVE RESERVES THE RIGHT TO ADJUST PLANTS TO EXACT LOCATION IN THE FIELD.
- SHRUB BED LAYOUTS SHALL BE STAKED FOR APPROVAL BY OWNER'S REPRESENTATIVE PRIOR TO SOIL PREPARATION. ALIGN AND EQUALLY SPACE IN ALL DIRECTIONS, ALL SHRUBS AS NOTED IN THE DRAWINGS.
- FINISH GRADE OF SHRUB BEDS SHALL BE THREE AND ONE HALF (3 1/2) INCHES BELOW ADJACENT PAVEMENT OR CURB WHERE TWO (2) INCHES COMPOST AND TWO (2) INCHES MULCH IS TO BE APPLIED.
- UNLESS OTHERWISE INDICATED, ALL SHRUB BEDS SHALL BE TOPDRESSED WITH A TWO (2) INCH COMPOST LAYER COVERED WITH A TWO (2) INCH MULCH LAYER. CONTRACTOR SHALL PROVIDE SAMPLES OF COMPOST AND MULCH TO THE OWNER'S REPRESENTATIVE ALONG WITH SPECIFIC TEST DATA PER THE REQUIREMENTS OF THE SPECIFICATIONS.
- IT IS THE RESPONSIBILITY OF THE CONTRACTOR TO ADVISE THE OWNER'S REPRESENTATIVE OF ANY CONDITION FOUND ON THE SITE WHICH PROHIBITS INSTALLATION AS SHOWN ON THESE DRAWINGS.
- ALL PLANT MATERIAL SHALL BE MAINTAINED IN A HEALTHY AND GROWING CONDITION AND MUST BE REPLACED WITH PLANT MATERIAL OF SIMILAR VARIETY, CHARACTER, AND SIZE IF DAMAGED, DESTROYED, OR REMOVED.
- CONTRACTOR SHALL MEET OR EXCEED ALL MINIMUM SIZES LISTED IN PLANT SCHEDULE INCLUDING CONTAINER SIZE.
- LANDSCAPE AREAS SHALL BE KEPT FREE OF TRUNK LITTER AND WEEDS AT ALL TIMES DURING CONSTRUCTION.
- THE CONTRACTOR SHALL BE RESPONSIBLE FOR FINE GRADING, REMOVAL OF MISCELLANEOUS DEBRIS AND ANY ADDITIONAL FILL REQUIRED TO CREATE A SMOOTH CONDITION PRIOR TO PLANTING IN ALL PLANTER LEAVE-OUTS.
- EXCESS SOIL FROM LANDSCAPE GRADING TO BE REMOVED AND DISPOSED OFF-SITE BY CONTRACTOR.
- FINISH MULCH GRADES OF ALL TREE BEDS SHALL BE (1/2") BELOW ADJACENT PAVEMENT ELEVATION. IN AREAS WHERE A COMBINED (4") LAYER OF MULCH AND COMPOST IS TO BE APPLIED FINISH SOIL GRADES SHALL BE (4 1/2") BELOW ADJACENT PAVEMENT OR CURB.
- CONTRACTOR SHALL PATCH ALL AREAS OF DISTURBED LAWN WITH SOLID SOD COMMON BERMUDA GRASS - REF. PLANS. NEW SOD SHALL BE FLUSH TO EXISTING TURF.
- REPLACE DEAD PLANTS WITHIN 1 DAY'S AFTER DETERMINATION OF CONDITION.

TREE REQUIREMENTS

- ROOT SYSTEM DEVELOPMENT:**
- ALL NAMED CULTIVARS WILL BE OWN ROOT CLONES, NO GRAFTER OR BUD-GRAFTED TREES WILL BE ACCEPTED.
 - 100% MECHANICALLY ROOT-PRUNED AT LEAST ONCE AND TRANSPLANTED A MINIMUM OF 3 TIMES DURING THE FIRST 3 YEARS OF THE TREE'S LIFE.
 - THE TREES WILL HAVE BEEN GROWN IN HEAVY CLAY SOIL AND IRRIGATED WITH DRIP IRRIGATION.
 - THE TRUNK FLARE MUST BE ABOVE GROUND AND VISIBLE AT NURSERY BEFORE HARVEST AND AFTER TRANSPLANTING INTO THE LANDSCAPE.
 - THE ROOT BALLS WILL HAVE BEEN HEELED IN FOR AT LEAST 30 DAYS AND HAVE A FRESH FLUSH OF NEW ROOT GROWTH INTO THE BURLAP.
 - NO GIRDLING ROOTS.
 - CANOPY DEVELOPMENT:
 - TREES WILL HAVE A STRONG CENTRAL LEADER TO TOP OF THE CANOPY. THE TIP OF THE LEADER ON THE MAIN TRUNK MUST BE INTACT AND TERMINAL BUD AT THE HIGHEST PART.
 - NO BRANCH CAN HAVE A DIAMETER GREATER THAN 2/3 THE TRUNK DIAMETER MEASURED DIRECTLY ABOVE THE BRANCH CROTCH. THE TREE WILL HAVE NO INCLUSIONS OR CO-DOMINANT BRANCHES.
 - THE TREE CROWN MUST BE STRUCTURALLY UNIFORM. BRANCHES WILL BE EVENLY DISTRIBUTED AROUND THE TRUNK. THE CROWN WILL BE FULL OF FOLIAGE EVENLY DISTRIBUTED AROUND THE TREE.

NORTH RICHLAND HILLS LANDSCAPE REQUIREMENTS

- Landscape Area** - 15% of total lot is required to be landscaped. Article III Sec. 114.71
Minimum of 15% of the total lot is required to be landscaped with turf, groundcover, shrubs, or trees. Pavement and aggregate areas do not count.
481,302 sf (total site) x 15% = 72,195 sf. Note: site meets and exceeds this requirement.
- Street Trees / Landscape Setback Along Road**
City Ordinance = 1 large tree or 2 ornamental trees per 50 LF of street frontage (minimum 3" caliper tree required). General Street - 60-ft ROW.
- New Road = 1,117 LF / 50 = 23 large trees (existing or proposed) within 15-foot buffer. This includes PH 1 and PH 2 area
 - Smithfield Road = 460 LF / 50 = 10 large trees (existing or proposed) within 15-foot buffer
- Street Tree Total: City Ord = 33 Trees. Trees provided = 9 shade and 7 ornamental along Northeast Parkway. (0 along Smithfield in order to preserve existing trees in this location). Also, no trees planted between school and Davis Blvd. along Northeast Parkway.
- Note: Overhead utility lines are along Smithfield Road
- Parking Lot Screening** TOD pg. 32, Sec 118-567
City Ordinance = One of the following is required to screen parking from public right-of-way and open space:
- Screening Shrubs - 3-ft o.c., 2-ft height at time of planting
 - Walls - masonry (height not specified)
 - Berms - 1-3 slopes 30-inch height
- Parking Lot A (West Parking Lot) = Screen Wall / Fence**
Parking Lot B (East Parking Lot) = no screening shrubs
Parking Lot at Cafeteria = Screening shrubs (11' 5-gal evergreen) with 46-LF conc. mow strip per TDG
- Parking Lot Trees**
City Ordinance = 1 large tree per 20 spaces
- East Parking Lot A = 80 spaces / 20 = 5 trees
 - West Parking Lot B = 60 spaces / 20 = 3 trees
- Parking Lot Tree Total: City Ord = 8 Trees; Trees Provided = 9 Trees
- Residential Buffer** - City Ordinance = 15 FT buffer yard with 1 large tree per 30 LF required where non-residential and residential zoning are adjacent. Article III Sec. 114.72
Residential Adjacency per City Ordinance = 1,275 LF / 30 = 43 Trees. None provided - existing trees to remain along perimeter. Fence provided in some locations. ref. arch.



ARCHITECT
HKS, INC.
300 N. SAINT PAUL ST.
SUITE 190
DALLAS, TX 75201

CIVIL ENGINEER
RAYMOND L. GOODSON JR., INC.
12001 N. CENTRAL EXPRESSWAY, SUITE 300
DALLAS, TEXAS 75243

LANDSCAPE
CCA LANDSCAPE ARCHITECTS, INC.
12700 HALLORETT RD, SUITE 148
DALLAS, TX 75220

STRUCTURAL
JQ INFRASTRUCTURE, LLC
100 GLASS STREET, SUITE 201
DALLAS, TEXAS 75201

MEP
ESTER MCCLURE & ASSOCIATES, INC.
3008 WEST WAY STREET
TYLER, TX 75703

FOOD SERVICE
JAM FOODSERVICE CONSULTING & DESIGN, LLC
3431 LAKEVIEW PKWY, STE 205
ROWLETT, TX 75088

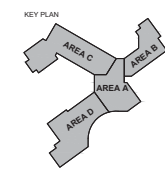


SMITHFIELD ELEMENTARY SCHOOL CAMPUS
REPLACEMENT AND THREE HIGH SCHOOL FINE
ARTS AUDITORIUM UPGRADES

OWNER
BROOKVILLE INDEPENDENT SCHOOL DISTRICT
8125 EAST BELLWAY
HALTOM CITY, TX 76117

INTERIM REVIEW ONLY
These documents are incomplete, and are released for interim review only and are not intended for regulatory approval, permit, or construction purposes.

Architect: [Signature]
Arch. Reg. No.: [Number]
Date: 12.19.2019



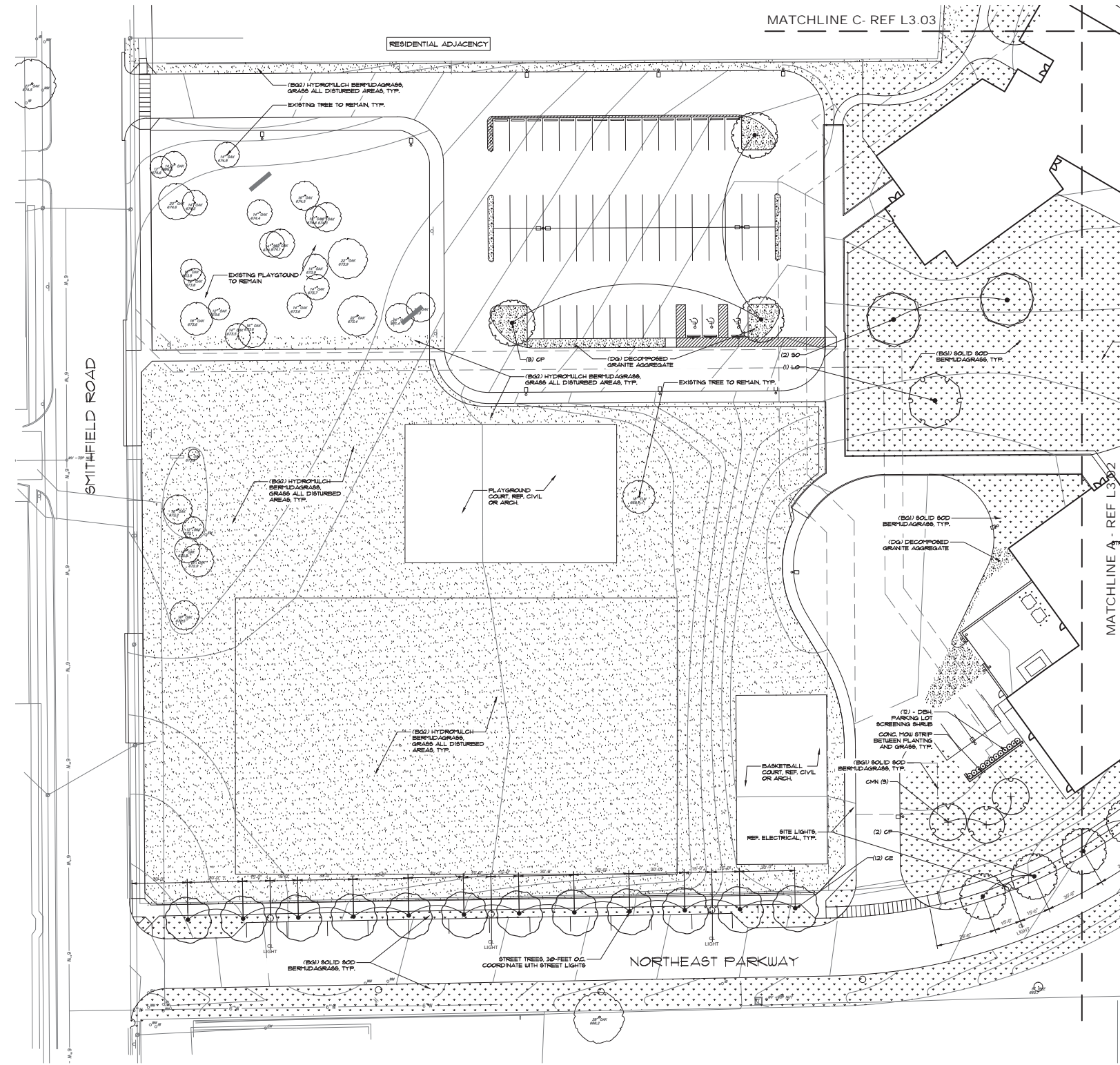
REVISION NO.	DESCRIPTION	DATE

PROJECT CASE NUMBER
SP 2019-18
HKS PROJECT NUMBER
22526.000
DATE
18 DECEMBER, 2019
ISSUE
75% CONSTRUCTION DOCUMENTS
SHEET TITLE
PLANTING PLAN

SHEET NO.
L3.00

CASE SP 2019-18
© 2019 HKS, INC.

LEGEND		
TREES		
CODE	TREE	
14" OAK	EXISTING TREE TO REMAIN	
CE	CEDAR ELM	
CP	CHINESE PISTACHE	
LO	LIVE OAK	
SO	SHUMARD RED OAK	
CMN	GRAPE MYRTLE	
SHRUBS		
CODE	SHRUB	
RY	RED YUCCA	
IH	INDIAN HAWTHORN	
DBH	DWARF BURFORD HOLLY	
	PARKING LOT SCREENING SHRUB	
TURF		
CODE	TURF / LAWN	
BG2	BERMUDA GRASS (HYDROMULCH)	
BG1	BERMUDA GRASS (SOLID SOD)	
GRND-COVER		
CODE	DESCRIPTION	
DG	DECOMPOSED GRANITE AGGREGATE	
LS	LIRIOPE SPICATA	
MATERIAL		
CODE	DESCRIPTION	
====	CONC. MOW STRIP / EDGING	



1 SMITHFIELD ELEMENTARY SCHOOL - PLANTING PLAN
1" = 30'-0"



ARCHITECT
HKS, INC.
300 N. SAINT PAUL ST.
SUITE 300
DALLAS, TX 75201

CIVIL ENGINEER
RAYMOND L. GOODSON JR., INC.
12001 N. CENTRAL EXPRESSWAY, SUITE 300
DALLAS, TEXAS 75243

LANDSCAPE
OCA LANDSCAPE ARCHITECTS, INC.
12700 HALLOCK RD., SUITE 148
DALLAS, TX 75230

STRUCTURAL
JQ INFRASTRUCTURE, LLC
100 GLASS STREET, SUITE 201
DALLAS, TEXAS 75201

MEP
ESTER MCCLURE & ASSOCIATES, INC.
308 WEST WAY STREET
TYLER, TX 75703

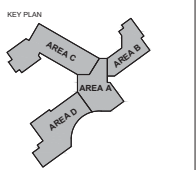
FOOD SERVICE
JMK FOODSERVICE CONSULTING & DESIGN, LLC
3431 LAKEVIEW PKWY., STE 205
ROWLETT, TX 75088



SMITHFIELD ELEMENTARY SCHOOL CAMPUS
REPLACEMENT AND THREE HIGH SCHOOL FINE
ARTS AUDITORIUM UPGRADES

OWNER
BROOKVILLE INDEPENDENT SCHOOL DISTRICT
8125 EAST BROWNWAY
HALTOM CITY, TX 76117

INTERIM REVIEW ONLY
These documents are incomplete, and are released for interim review only and are not intended for regulatory approval, permit, or construction purposes.
Architect: [Signature]
Arch. Reg. No.: [Number]
Date: 12.18.2019



REVISION NO.	DESCRIPTION	DATE

PROJECT CASE NUMBER
SP 2019-18
HKS PROJECT NUMBER
22526.000
DATE
18 DECEMBER, 2019
ISSUE
75% CONSTRUCTION DOCUMENTS
SHEET TITLE
PLANTING PLAN

SHEET NO.
L3.01

CASE SP 2019-18
© 2019 HKS, INC.



ARCHITECT
HKS, INC.
300 N. SAINT PAUL ST.
SUITE 500
DALLAS, TX 75201

CIVIL ENGINEER
RAYMOND L. GOODSON JR., INC.
12001 N. CENTRAL EXPRESSWAY, SUITE 300
DALLAS, TEXAS 75243

LANDSCAPE
CCA LANDSCAPE ARCHITECTS, INC.
12700 HALLOREST RD., SUITE 140
DALLAS, TX 75230

STRUCTURAL
JO INFRASTRUCTURE, LLC
100 GLASS STREET, SUITE 201
DALLAS, TEXAS 75201

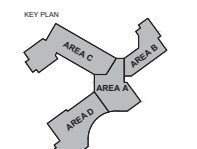
MEP
ESTER MCCLURE & ASSOCIATES, INC.
3008 WEST MAY STREET
TYLER, TX 75703

FOOD SERVICE
JMK FOODSERVICE CONSULTING & DESIGN, LLC
3431 LAKEVIEW PKWY., STE 205
ROWLETT, TX 75089

**SMITHFIELD ELEMENTARY SCHOOL CAMPUS
REPLACEMENT AND THREE HIGH SCHOOL FINE
ARTS AUDITORIUM UPGRADES**

OWNER
BROOKVILLE INDEPENDENT SCHOOL DISTRICT
8125 EAST BROWN
HALTOM CITY, TX 76117

INTERIM REVIEW ONLY
These documents are incomplete, and are released for interim review only and are not intended for regulatory approval, permit, or construction purposes.
Architect: [Signature]
Arch. Reg. No.: [Number]
Date: 12.19.2019



REVISION NO.	DESCRIPTION	DATE

PROJECT CASE NUMBER
SP 2019-18

HKS PROJECT NUMBER
22526.000

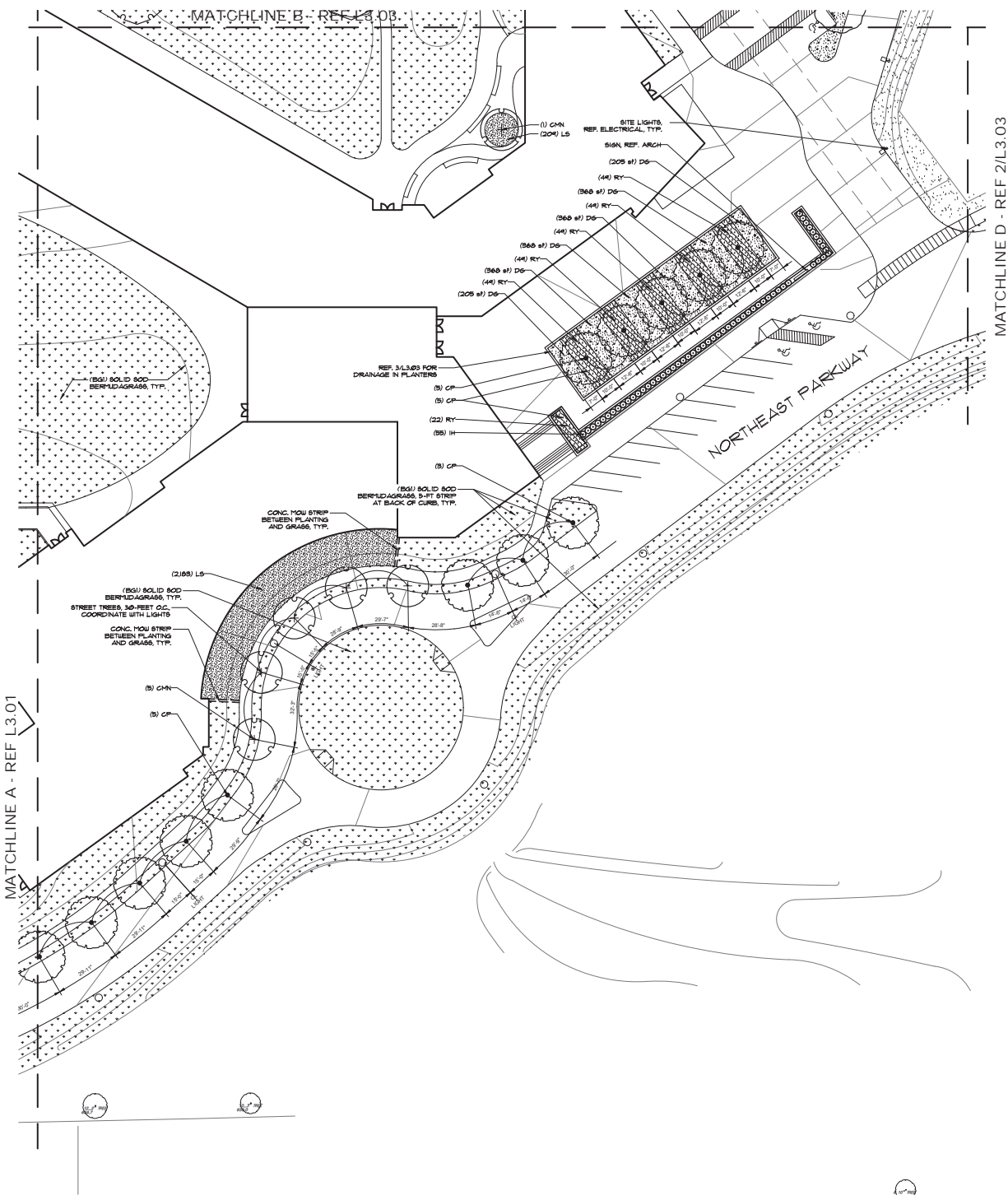
DATE
18 DECEMBER, 2019

ISSUE
75% CONSTRUCTION DOCUMENTS

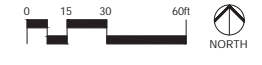
SHEET TITLE
PLANTING PLAN

SHEET NO.
L3.02

TREES	CODE	TREE
		EXISTING TREE TO REMAIN
	CE	CEDAR ELM
	CP	CHINESE PISTACHE
	LO	LIVE OAK
	SO	SHUMARD RED OAK
	CMN	GRAPE MYRTLE
SHRUBS	CODE	SHRUB
	RY	RED YUCCA
	IH	INDIAN HAWTHORN
	DBH	DWARF BURFORD HOLLY PARKING LOT SCREENING SHRUB
TURF	CODE	TURF / LAWN
	BG2	BERMUDA GRASS (HYDROMULCH)
	BG1	BERMUDA GRASS (SOLID SOD)
GRND-COVER	CODE	DESCRIPTION
	DG	DECOMPOSED GRANITE AGGREGATE
	LS	LIRIOPE SPICATA
MATERIAL	CODE	DESCRIPTION
		CONC. MOW STRIP / EDGING



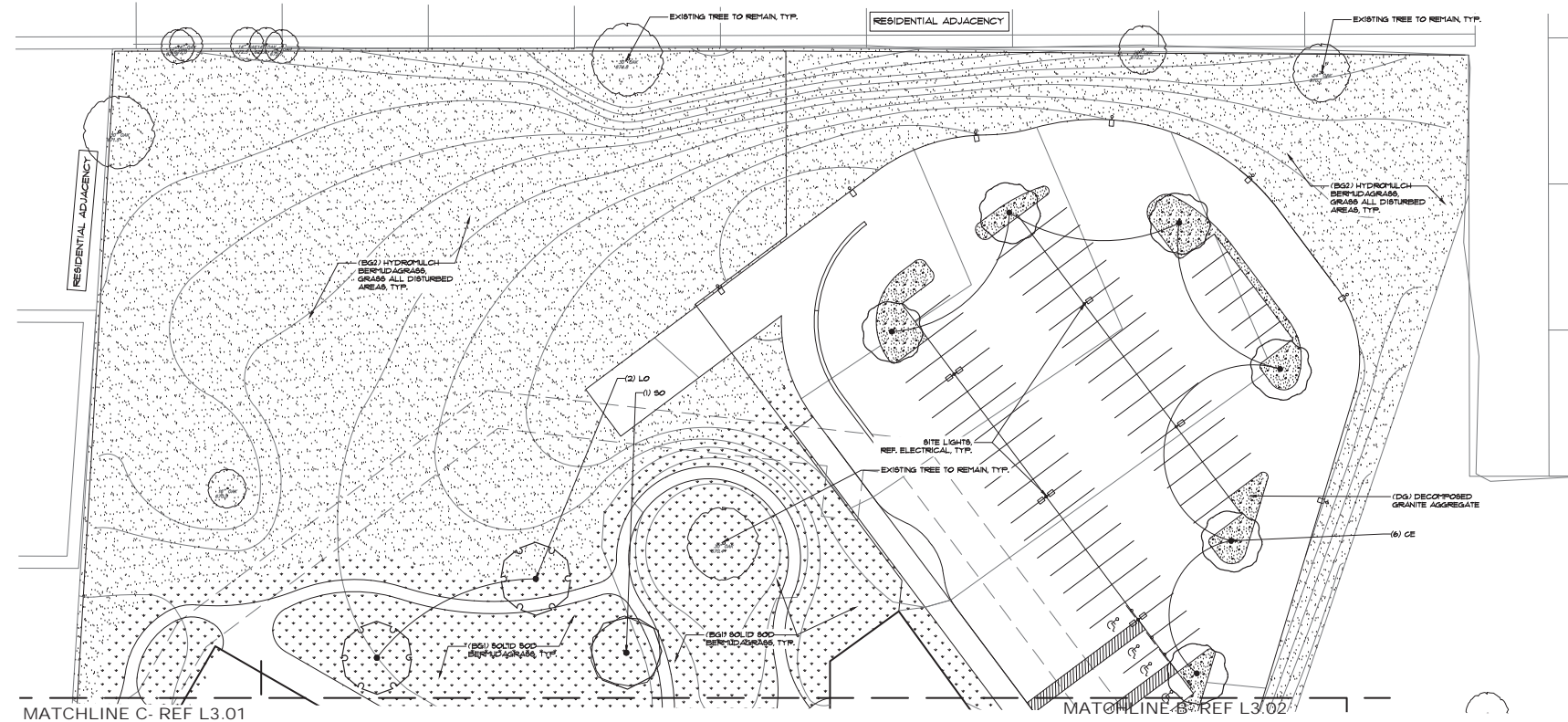
1 SMITHFIELD ELEMENTARY SCHOOL - PLANTING PLAN
1" = 30'-0"



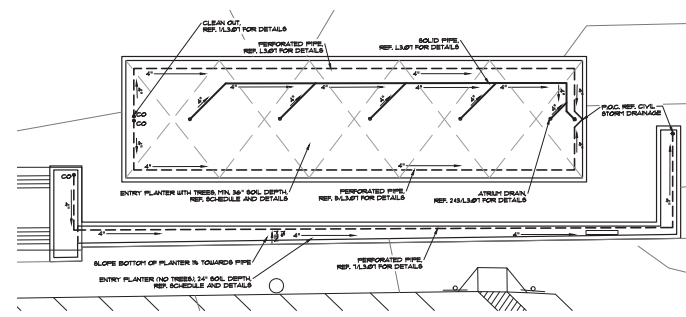
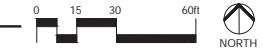
PLOT DATE: 12/19/2019

CASE SP 2019-18
© 2019 HKS, INC.

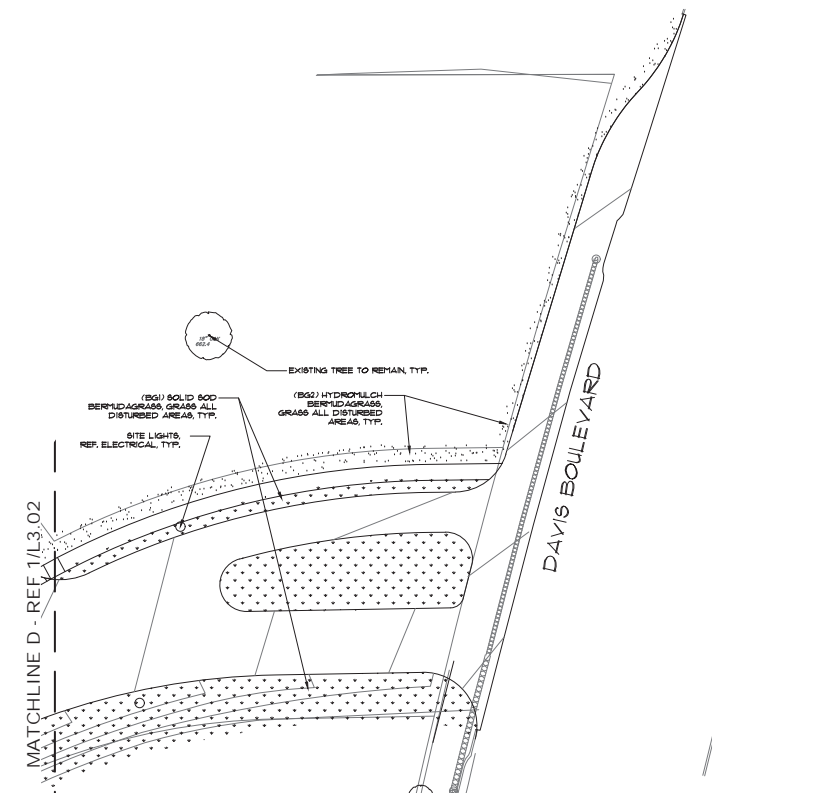
LEGEND		
TREES		
TREES	CODE	TREE
		EXISTING TREE TO REMAIN
	CE	CEDAR ELM
	CP	CHINESE PISTACHE
	LO	LIVE OAK
	SO	SHUMARD RED OAK
	CMN	GRAPE MYRTLE
SHRUBS		
SHRUBS	CODE	SHRUB
	RY	RED YUCCA
	IH	INDIAN HAWTHORN
	DBH	DWARF BURFORD HOLLY PARKING LOT SCREENING SHRUB
TURF		
TURF	CODE	TURF / LAWN
	BG2	BERMUDA GRASS (HYDROMULCH)
	BG1	BERMUDA GRASS (SOLID SOD)
GRND-COVER		
GRND-COVER	CODE	DESCRIPTION
	DG	DECOMPOSED GRANITE AGGREGATE
	LS	LIRIOPE SPICATA
MATERIAL		
MATERIAL	CODE	DESCRIPTION
	====	CONC. MOW STRIP / EDGING



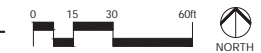
1 SMITHFIELD ELEMENTARY SCHOOL - PLANTING PLAN
1" = 30'-0"



3 SMITHFIELD ELEMENTARY SCHOOL - LANDSCAPE DRAINAGE PLAN
1" = 0'-0"



SMITHFIELD ELEMENTARY SCHOOL - PLANTING PLAN
1" = 30'-0"



ARCHITECT
HKS, INC.
300 N. SAINT PAUL ST.
SUITE 100
DALLAS, TX 75201

CIVIL ENGINEER
RAYMOND L. GOODSON JR., INC.
12001 N. CENTRAL EXPRESSWAY, SUITE 300
DALLAS, TEXAS 75243

LANDSCAPE
CCA LANDSCAPE ARCHITECTS, INC.
12700 HILLCREST RD., SUITE 149
DALLAS, TX 75230

STRUCTURAL
JO INFRASTRUCTURE, LLC
100 GLASS STREET, SUITE 201
DALLAS, TEXAS 75201

MEP
ESTES MCCLURE & ASSOCIATES, INC.
308 WEST WAY STREET
TYLER, TX 75703

FOOD SERVICE
JMK FOODSERVICE CONSULTING & DESIGN, LLC
3431 LAKEVIEW PKWY., STE 205
ROWLETT, TX 75088

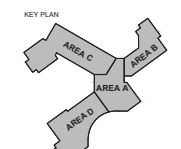


SMITHFIELD ELEMENTARY SCHOOL CAMPUS
REPLACEMENT AND THREE HIGH SCHOOL FINE
ARTS AUDITORIUM UPGRADES

OWNER
BROOKVILLE INDEPENDENT SCHOOL DISTRICT
8128 SAINT BELLEVILLE
HALTOM CITY, TX 76117

INTERIM REVIEW ONLY
These documents are incomplete, and
are released for interim review only and
are not intended for regulatory approval,
permits, or construction purposes.

Architect: HKS, INC.
Arch. Reg. No.: 1000000000
Date: 12.19.2019



REVISION NO.	DESCRIPTION	DATE

PROJECT CASE NUMBER
SP 2019-18

HKS PROJECT NUMBER
22526.000

DATE
18 DECEMBER, 2019

ISSUE
75% CONSTRUCTION
DOCUMENTS

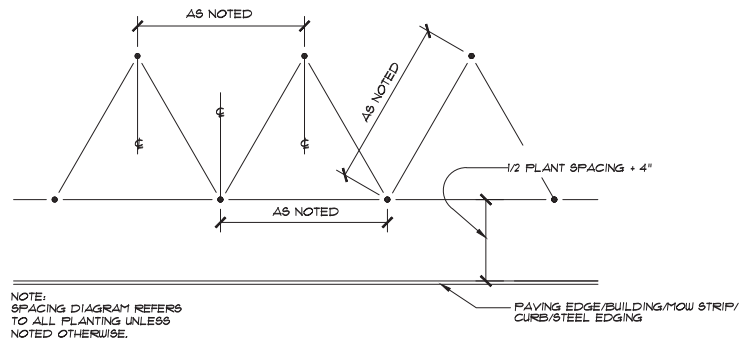
SHEET TITLE
PLANTING
PLAN

SHEET NO.
L3.03

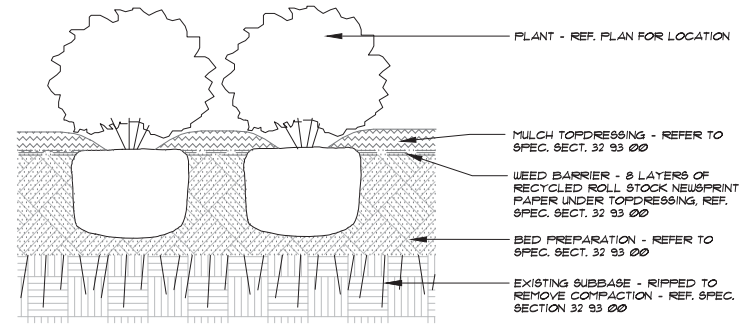
CASE SP 2019-18
© 2019 HKS, INC.

PLANT AND MATERIAL SCHEDULE

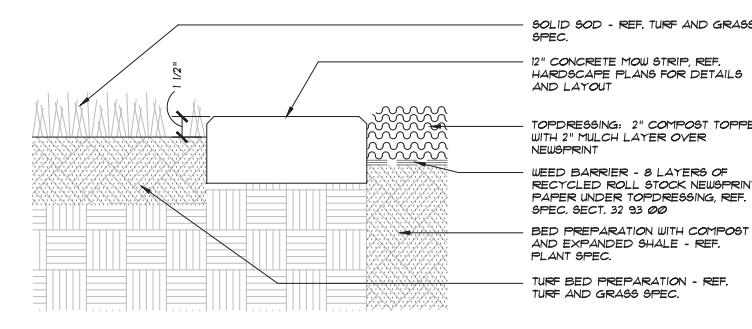
TREES	CODE	COMMON NAME / BOTANICAL NAME	CONT	CAL	SIZE	REMARKS	QTY
	CE	CEDAR ELM / ULMUS CRASSIFOLIA	B&B	3" CAL. MIN.	11'-13'H X 4'-6"W MIN.	FULL, WELL BRANCHED, VERTICAL GROWTH HABIT NO CROSSING OR RUBBING BRANCHES	18
	CP	CHINESE PISTACHE / PISTACIA CHINENSIS	B&B / CONT.	3" CAL. MIN.	11'-13'H X 4'-6"W MIN.	FULL, WELL BRANCHED, VERTICAL GROWTH HABIT	18
	LO	LIVE OAK / QUERCUS VIRGINIANA	B&B	3" CAL. MIN.	11'-13'H X 4'-6"W MIN.	FULL, WELL BRANCHED, VERTICAL GROWTH HABIT	3
	SO	RED OAK / QUERCUS SHUMARDII	B&B	3" CAL. MIN.	11'-13'H X 4'-6"W MIN.	FULL, WELL BRANCHED, VERTICAL GROWTH HABIT	3
	CMN	CRAPE MYRTLE / LAGERSTROEMIA x 'NATCHEZ'	B&B / CONT.	2" CAL. MIN. 15 GAL. MIN.	8'H X 3'-5"W MIN.	FULL, WELL BRANCHED, VERTICAL GROWTH HABIT, STANDARD, NO CROSSING OR RUBBING BRANCHES	9
SHRUBS	CODE	COMMON NAME / BOTANICAL NAME	SIZE	REMARKS	SPACING	QTY	
	RY	RED YUCCA / HESPERALOE PARVIFLORA	3 GAL	FULL TO BASE, HEAVILY ROOTED	TRIANGULAR SPACING AT 24" O.C., 0.28 PLANTS PER SF	+/- 267	
	IH	INDIAN HAWTHORN / HESPERALOE PARVIFLORA	3 GAL	FULL TO BASE, HEAVILY ROOTED	SINGLE ROW AT 36" O.C.	+/- 55	
	DBH	PARKING LOT SCREENING SHRUB DWARF BURFORD HOLLY / ILEX CORNUTA 'BURFORDII NANA'	5 GAL.	FULL TO BASE, HEAVILY ROOTED	SINGLE ROW AT 36" O.C.	12	
GROUND COVERS	CODE	COMMON NAME / BOTANICAL NAME	CONT	REMARKS	QTY		
	BG2	BERMUDA GRASS / CYNODON DACTYLON	SEED	HYDROMULCH, REF. SPEC 329200	+/- 185,200 SF		
	BG1	BERMUDA GRASS / CYNODON DACTYLON 'TIFFWAY 419'	SOD	SOLID SOD, REF. SPEC 329200	+/- 98,700 SF		
	DG	AGGREGATE - DECOMPOSED GRANITE OVER 2 LAYERS FILTER FABRIC	3-1/2" DEPTH	REF. SPEC 329300	+/- 4,710 SF		
	LS	LIRIOPE SPICATA	4" POT	FULL TO BASE, HEAVILY ROOTED	TRIANGULAR SPACING AT 12" O.C., 1.15 PLANT PER SF	+/- 2,536	
MATERIALS	ITEM	DEPTH	REMARKS	QTY			
PLANTING BEDS FOR SHRUBS AND GROUNDCOVER: NOTE - FIELD VERIFY ALL QUANTITIES, ALL BEDS TO BE FULL, REFER TO DETAILS AND SPECS							
	MULCH - TOPDRESSING PLANTING BEDS	3" DEPTH	RUSTIC CUT HARDWOOD OR APPROVED EQUIVALENT, COMPACTED DEPTH, REF. SPEC SECT 32 9300	FIELD VERIFY			
	COMPOST - PLANTING BEDS	3" DEPTH	ORGANIC, WELL-DECOMPOSED, REF. SPEC SECT 329300	FIELD VERIFY			
	WEED BARRIER - NEWSPRINT PLANTING BEDS	8 LAYERS	8 LAYERS OF NEWSPRINT AT PLANTING BEDS, REF. DETAILS AND SPEC SECT 32 9300	FIELD VERIFY			
	EXPANDED SHALE - PLANTING BEDS	3" DEPTH	PLANTING BEDS, SUPPLIED BY SOIL BUILDING SYSTEMS OR APPROVED EQUAL, REF. SPEC SECT 32 9300	FIELD VERIFY			
	ORGANIC BIOLOGICAL FERTILIZER - PLANTING B.		REF. SPEC SECT 329200 FOR MATERIAL AND APPLICATION RATE	FIELD VERIFY			
	FILTER FABRIC	2 LAYERS	2 LAYERS BENEATH AGGREGATE, REF. SPEC SECT 32 9300	FIELD VERIFY			
	CONC. MOW STRIP - LANDSCAPE EDGING		12-INCH WIDE CONC. MOW STRIP PER BIRD STANDARDS	100 LF			
LAWN / TURF GRASS: NOTE - FIELD VERIFY ALL QUANTITIES, ALL DISTURBED AREAS TO BE GRASSED, REFER TO DETAILS AND SPECS							
	TOPSOIL - LAWN / TURF GRASS	1 1/2" DEPTH	REF. DETAILS AND SPECS	FIELD VERIFY			
	COMPOST - LAWN / TURF GRASS	1/2" DEPTH	ORGANIC, WELL-DECOMPOSED, REF. DETAILS AND SPECS SUPPLIED BY SOIL SYSTEMS OR APPROVED EQUAL, REF. SPEC 32 9300	FIELD VERIFY			
	ORGANIC BIOLOGICAL FERTILIZER - LAWN		REF. SPEC SECT 329200 FOR MATERIAL AND APPLICATION RATE	FIELD VERIFY			
PLANTERS AT ENTRY:							
	SOIL MIX - TREE MIX	+/- 36" WITH TREES +/- 24" WITHOUT TREES	SUPPLIED BY SOIL BUILDING SYSTEMS OR APPROVED EQUAL, REF. SPECS FOR PRODUCT INFO AND INSTALLATION	FIELD VERIFY			
	MULCH - TOPDRESSING	3"	FINE CUT HARDWOOD SUPPLIED BY SOIL BUILDING SYSTEMS OR APPROVED EQUAL, REF. SPEC 32 9300	FIELD VERIFY			
	COMPOST - TOPDRESSING	2"	ORGANIC, WELL-DECOMPOSED, SUPPLIED BY SOIL BUILDING SYSTEMS OR APPROVED EQUAL, REF. SPEC 32 9300	FIELD VERIFY			
	DG / DECOMPOSED GRANITE AGG.	3 1/2"	THICK LAYER OVER 2 LAYERS FILTER FABRIC, AS SUPPLIED BY JEWEL/OLD CASTLE OR APPROVED EQUAL, REF. SPEC 32 9300	+/- 1,882 SF			
	FILTER FABRIC		2 LAYERS BENEATH AGGREGATE, REF. SPEC 32 9300	1,882 SF X 2 LAYERS			
	SUB-DRAINAGE - AGGREGATE - #8 STONE	3"	AS SUPPLIED BY JEWEL/OLD CASTLE, VAQUERO STONE AND SUPPLY, APPROVED EQUAL, REF. SPECS	FIELD VERIFY			
	SUB-DRAINAGE - AGGREGATE - #57 STONE	3"	AS SUPPLIED BY JEWEL/OLD CASTLE, VAQUERO STONE AND SUPPLY, APPROVED EQUAL, REF. SPECS	FIELD VERIFY			
NOTE - QUANTITIES ARE APPROXIMATE, FIELD VERIFY FOR ACCURACY. ALL PLANTING BEDS TO BE FULL AND PREPARED PER SPECIFICATIONS. ALL DISTURBED AREAS TO BE GRASSED AND SOIL PREPARED PER SPECIFICATIONS.							
NOTE - PLANT OR MATERIAL SUBSTITUTIONS MUST BE SUBMITTED FOR APPROVAL PRIOR TO INSTALLATION.							
NOTE - SUBMITTALS TO BE PROVIDED TO OWNER'S REPRESENTATIVE FOR APPROVAL PRIOR TO INSTALLATION.							
NOTE - SAMPLES / SUBMITTALS TO BE PROVIDED TO OWNER'S REPRESENTATIVE FOR APPROVAL PRIOR TO INSTALLATION.							



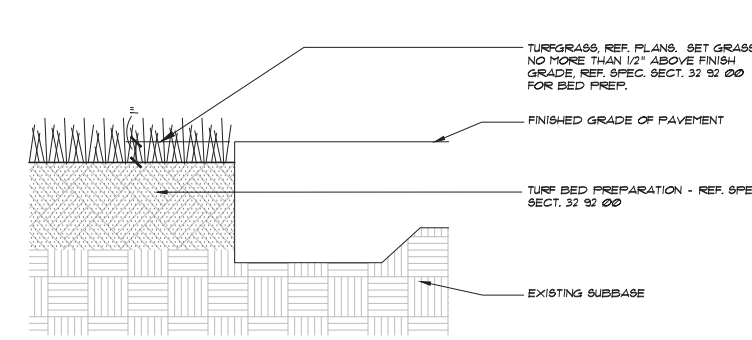
1 TRIANGULAR SPACING - PLAN
NTS



2 SHR PERENNIAL ORNAMENTAL AT EDS - SECT
NTS



3 TURF BED AT MOW STRIP AT PLANTER BED - SECTION
NTS



4 LAWN AT PAVEMENT - SECTION
NTS



ARCHITECT
HKS, INC.
300 N GANT PAUL ST
SUITE 500
DALLAS, TX 75201

CIVIL ENGINEER
RAYMOND L. GOODSON JR., INC.
12001 N. CENTRAL EXPRESSWAY, SUITE 300
DALLAS, TEXAS 75243

LANDSCAPE
CSA LANDSCAPE ARCHITECTS, INC.
12700 HALLOCK RD, SUITE 148
DALLAS, TX 75220

STRUCTURAL
JO INFRASTRUCTURE, LLC
100 GLASS STREET, SUITE 201
DALLAS, TEXAS 75201

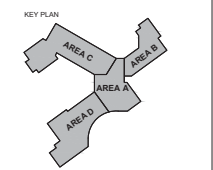
MEP
ESTER MCCLURE & ASSOCIATES, INC.
3008 WEST WAY STREET
TYLER, TX 75703

FOOD SERVICE
JRM FOODSERVICE CONSULTING & DESIGN, LLC
3431 LAKEVIEW PKWY, STE 205
ROWLETT, TX 75088

SMITHFIELD ELEMENTARY SCHOOL CAMPUS
REPLACEMENT AND THREE HIGH SCHOOL FINE
ARTS AUDITORIUM UPGRADES

OWNER
BROOKVILLE INDEPENDENT SCHOOL DISTRICT
8125 EAST BELLWAMP
HALTOM CITY, TX 76117

INTERIM REVIEW ONLY
These documents are incomplete, and are released for interim review only and are not intended for regulatory approval, permit, or construction purposes.
Architect: [Signature]
Arch. Reg. No.: [Number]
Date: 12.13.2019



REVISION NO.	DESCRIPTION	DATE

PROJECT CASE NUMBER
SP 2019-18
HKS PROJECT NUMBER
22526.000
DATE
18 DECEMBER, 2019
ISSUE
75% CONSTRUCTION DOCUMENTS
SHEET TITLE
PLANTING DETAILS

SHEET NO.
L3.04

CASE SP 2019-18
© 2019 HKS, INC.

ARCHITECT
HKS, INC.
300 N SAINT PAUL ST
SUITE 300
DALLAS, TX 75201

CIVIL ENGINEER
RAYMOND L. GOODSON JR., INC.
12001 N. CENTRAL EXPRESSWAY, SUITE 300
DALLAS, TEXAS 75243

LANDSCAPE
OCA LANDSCAPE ARCHITECTS, INC.
12700 HALLOCK RD, SUITE 148
DALLAS, TX 75220

STRUCTURAL
JQ INFRASTRUCTURE, LLC
100 GLASS STREET, SUITE 201
DALLAS, TEXAS 75201

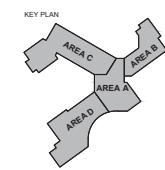
MEP
ESTER MCCLURE & ASSOCIATES, INC.
308 WEST WAY STREET
TYLER, TX 75703

FOOD SERVICE
JMK FOODSERVICE CONSULTING & DESIGN, LLC
3431 LAKEVIEW PKWY, STE 205
ROWLETT, TX 75088

BS&D
SMITHFIELD ELEMENTARY SCHOOL CAMPUS
REPLACEMENT AND THREE HIGH SCHOOL FINE
ARTS AUDITORIUM UPGRADES

OWNER
BROOKVILLE INDEPENDENT SCHOOL DISTRICT
8125 EAST BELLWAMP
HALTOM CITY, TX 76117

INTERIM REVIEW ONLY
These documents are incomplete, and are released for interim review only and are not intended for regulatory approval, permit, or construction purposes.
Architect: HKS, INC.
Arch. Reg. No.: 0000000000
Date: 12.18.2019

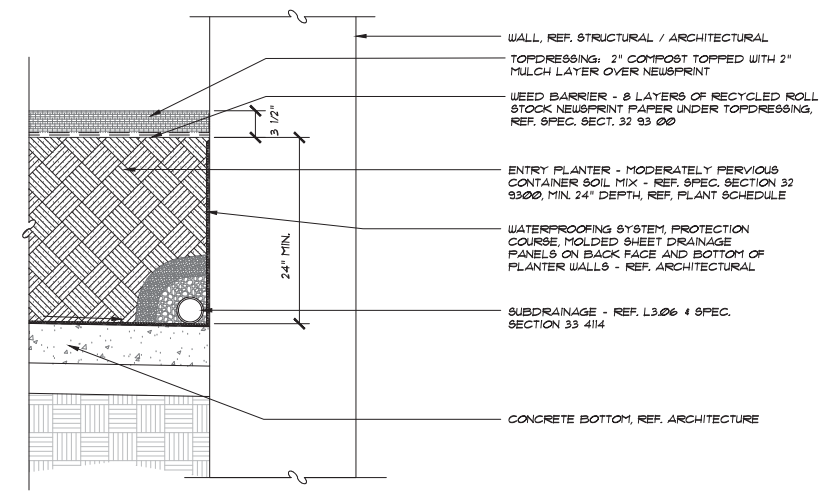


REVISION NO.	DESCRIPTION	DATE

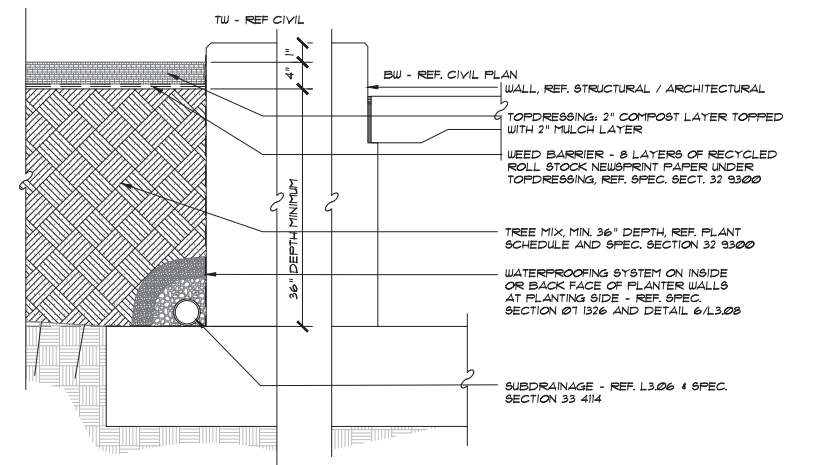
PROJECT CASE NUMBER
SP 2019-18
HKS PROJECT NUMBER
22526.000
DATE
18 DECEMBER, 2019

ISSUE
75% CONSTRUCTION DOCUMENTS
SHEET TITLE
PLANTING DETAILS

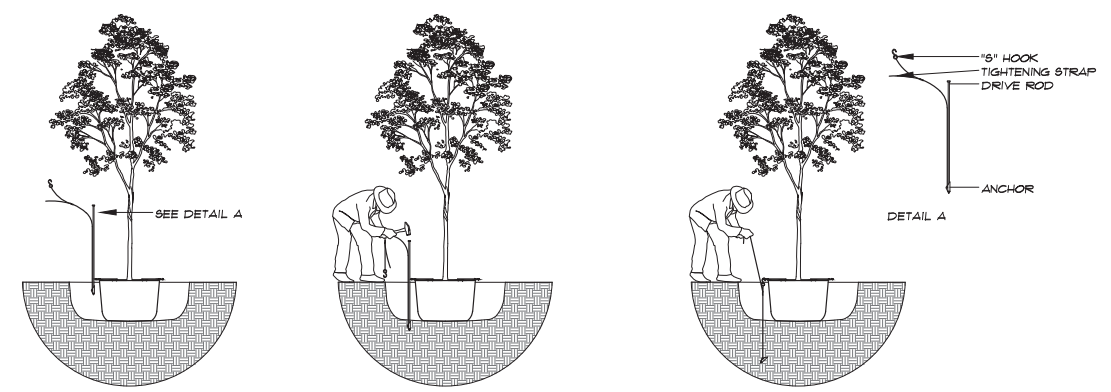
SHEET NO.
L3.05



3 SOIL MIX AT ENTRY PLANTER - SECTION
1" = 1'-0"

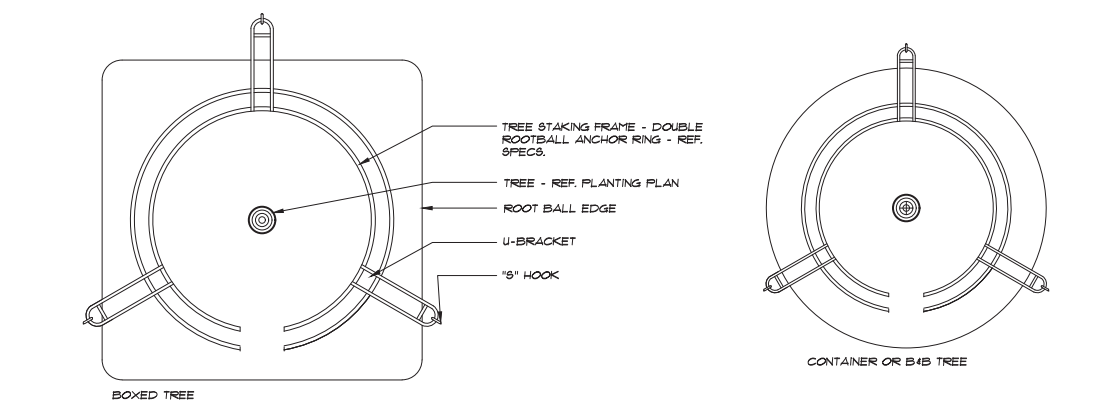


4 SOIL MIX AT PLANTERS AT ENTRY WITH TREE - SECTION
1" = 1'-0"

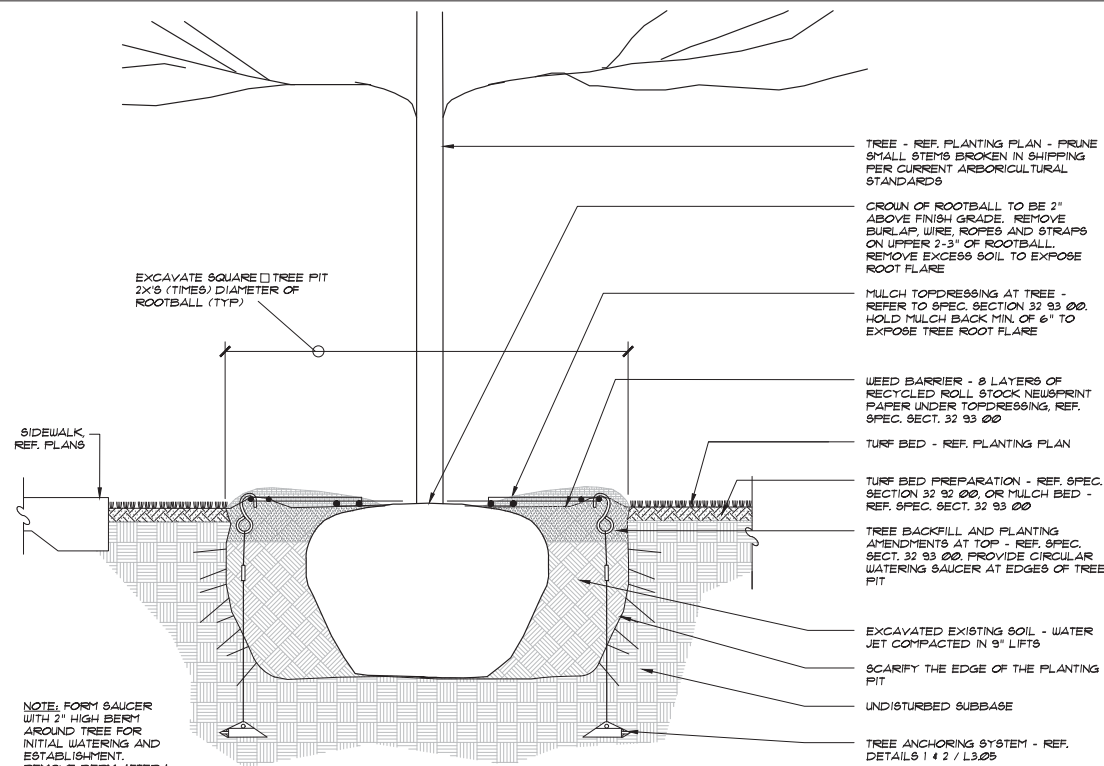


- STEP 1:**
- SET TREE IN PLANTING PIT
 - CENTER ROOT ANCHOR'S INNER RING(S) AROUND TRUNK OF TREE
 - ALIGN DRIVE ROD AS CLOSE AS POSSIBLE TO OUTSIDE EDGE OF U-BRACKET
- STEP 2:**
- DRIVE ANCHOR STRAIGHT DOWN INTO UNDISTURBED SUBBASE SOIL AT MINIMUM OF 18" TO 24" DEPTH
 - SEE CHART FOR RECOMMENDED DEPTHS PER TREE SIZE
- STEP 3:**
- REMOVE DRIVE ROD
 - REPEAT STEPS 1 & 2 FOR ALL THREE (3) ANCHOR LOCATIONS
 - PULL BACK ON STRAP APPROXIMATELY 3" FOR THE V-BB ANCHOR OR 6" TO 1" FOR THE V-BB ANCHOR TO SET ANCHOR INTO A HORIZONTAL OR LOCKED POSITION. A FULCRUM MAY BE REQUIRED TO ASSIST IN SETTING THE ANCHOR
 - PLACE 1/2" HOOK OVER THE END OF THE U-BRACKET
 - PULL STRAP UP VERTICALLY UNTIL ROOT ANCHOR RINGS BITE INTO THE TOP OF THE ROOT BALL AND U-BRACKETS ARE SETTING FLUSH ON TOP OF THE ROOT BALL
 - TIE EXCESS STRAP OFF TO THE U-BRACKET ALLOWING ENOUGH REMAINING STRAP TO ADJUST TREE, IF NECESSARY
 - BACK FILL ONLY AFTER THE TREE IS STRAIGHTENED AND SECURE
- OPTIONAL ANCHORING SEQUENCES:**
- A. FOR ANCHOR INSTALLATION PRIOR TO TREE INSTALLATION - ANCHORS MAY BE PLACED PER THE ROOT BALL DIAMETER AND INSTALLED FROM THE BOTTOM OF THE EXCAVATED TREE PIT TO ENSURE THE DEPTH OF THE ANCHORS MEET THE REQUIRED 18" TO 24" DEPTH INTO UNDISTURBED SOILS.
- B. FOR ANCHOR INSTALLATION AFTER THE PLANTING BACKFILL - BE SURE TO MARK THE DRIVE PIN TO THE REQUIRED DEPTH TO ENSURE THAT WORKERS ARE DRIVING THE ANCHOR THE REQUIRED 18" TO 24" DEPTH INTO UNDISTURBED SOILS BELOW THE BOTTOM OF THE EXCAVATED TREE PIT. IMPROPER DEPTH OF ANCHORING WILL BE CORRECTED AS NECESSARY TO ENSURE TREE IS STABLE.

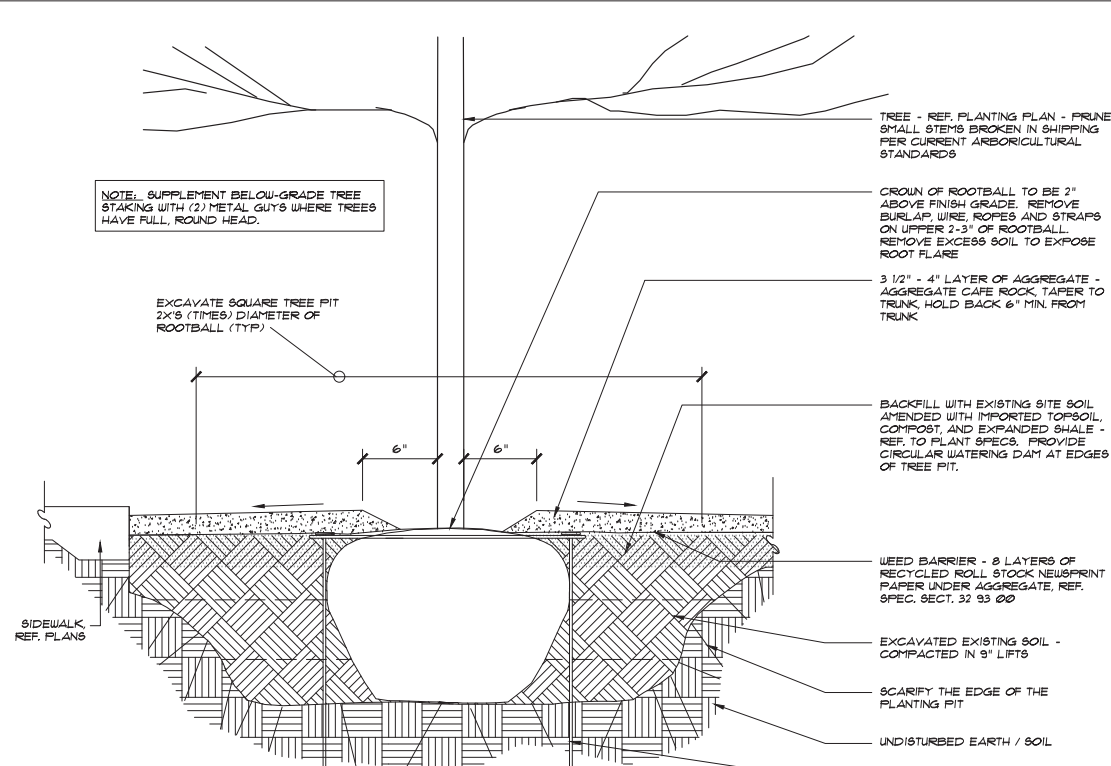
1 TREE ANCHORING
NTS



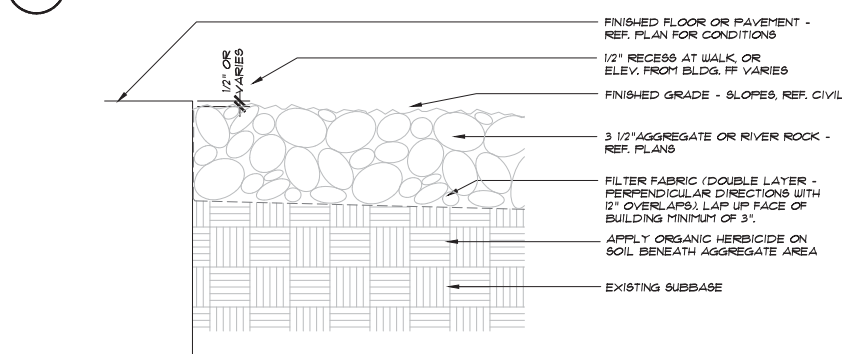
2 TYPICAL TREE GROUND ANCHORING - PLANS
NTS



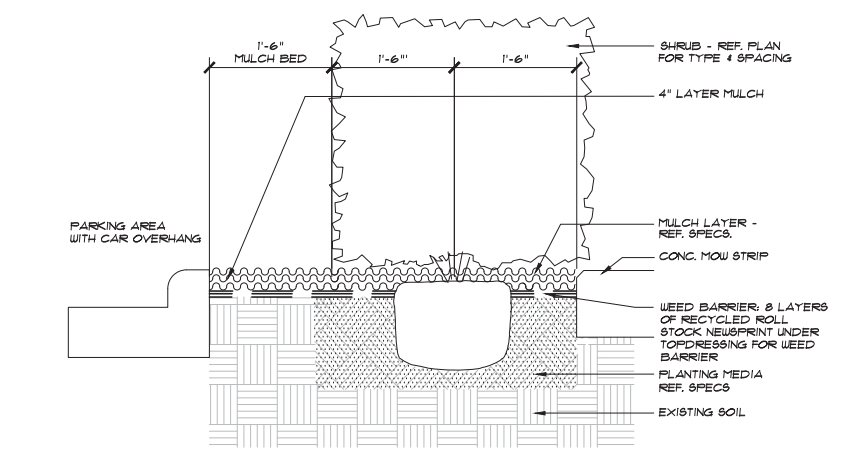
3 SINGLE TR N TREE PLANTING STA ING IN T RF - SECTION



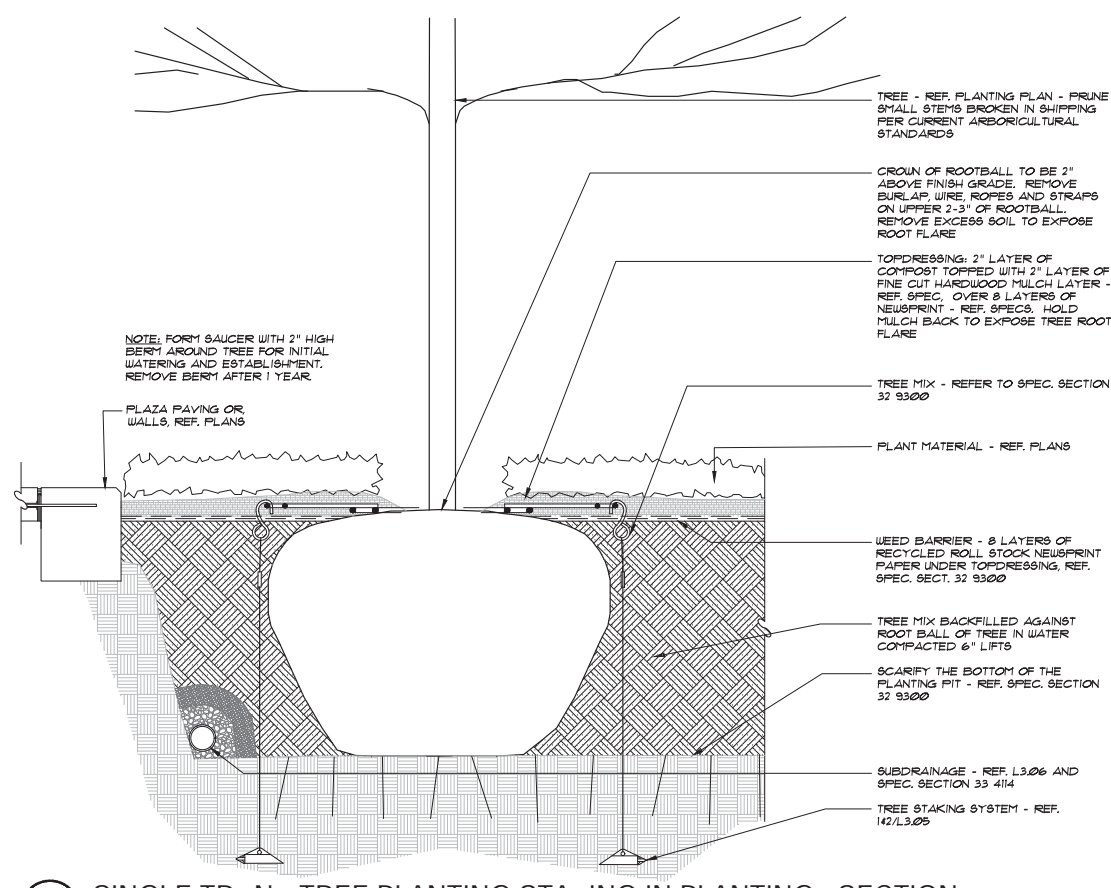
1 SINGLE TREE PLANTING STA ING IN AGGREGATE - SECTION



4 A E AT E AT IL IN PAVIN - SECTION



5 SHR PLANTING AT PAR ING - SECTION



0 SINGLE TR N TREE PLANTING STA ING IN PLANTING - SECTION



ARCHITECT
HKS, INC.
301 N. EAST PAUL ST.
SUITE 300
DALLAS, TX 75201

CIVIL ENGINEER
RAYMOND L. GOODSON JR., INC.
12001 N. CENTRAL EXPRESSWAY, SUITE 300
DALLAS, TEXAS 75243

LANDSCAPE
OCA LANDSCAPE ARCHITECTS, INC.
12700 HALLOCK RD, SUITE 140
DALLAS, TX 75220

STRUCTURAL
JO INFRASTRUCTURE, LLC
100 GLASS STREET, SUITE 201
DALLAS, TEXAS 75201

MEP
ESTER MCCLURE & ASSOCIATES, INC.
3008 WEST WALK STREET
TYLER, TX 75703

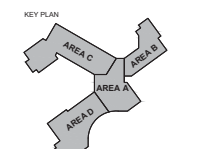
FOOD SERVICE
JAM FOODSERVICE CONSULTING & DESIGN, LLC
3431 LAKEVIEW PKWY, STE 205
ROWLETT, TX 75088

SMITHFIELD ELEMENTARY SCHOOL CAMPUS
REPLACEMENT AND THREE HIGH SCHOOL FINE
ARTS AUDITORIUM UPGRADES

OWNER
BROOKVILLE INDEPENDENT SCHOOL DISTRICT
8125 EAST BROWNWAY
HALTOM CITY, TX 76117

INTERIM REVIEW ONLY
These documents are incomplete, and are released for interim review only and are not intended for regulatory approval, permit, or construction purposes.

Architect: [Signature]
Arch. Reg. No.: [Number]
Date: 12.13.2019



REVISION NO.	DESCRIPTION	DATE

PROJECT CASE NUMBER
SP 2019-18

HKS PROJECT NUMBER
22526.000

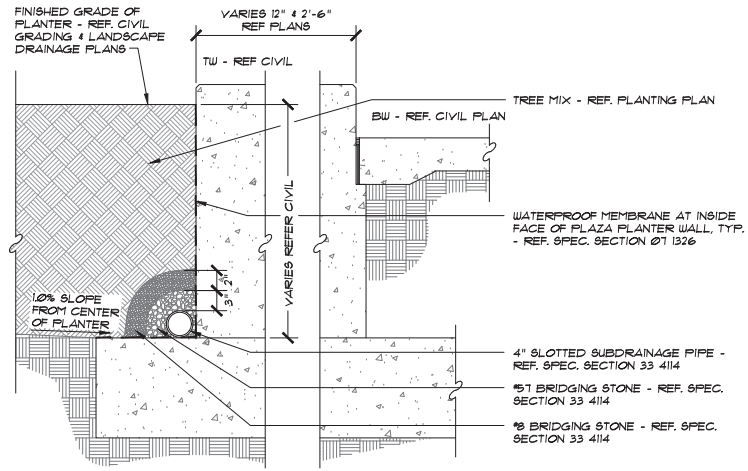
DATE
18 DECEMBER, 2019

ISSUE
75% CONSTRUCTION DOCUMENTS

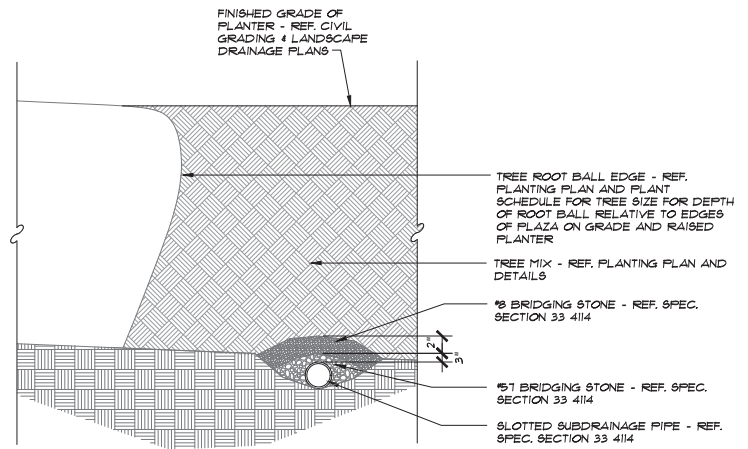
SHEET TITLE
PLANTING DETAILS

SHEET NO.
L3.06

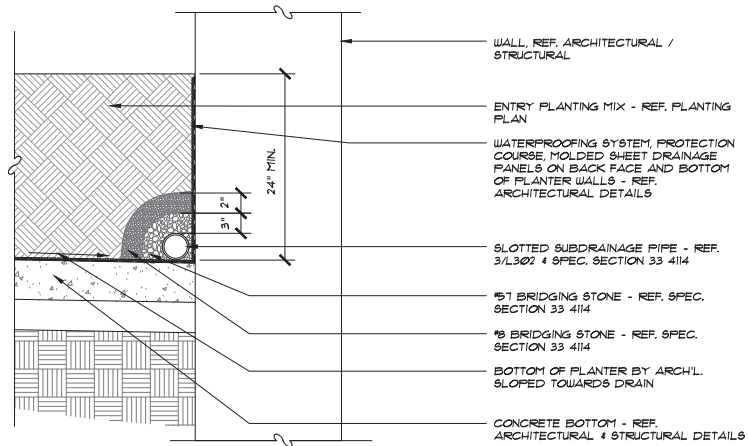
CASE SP 2019-18
© 2019 HKS, INC.



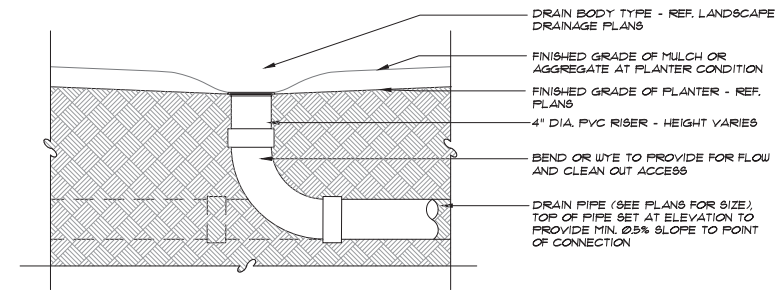
5 UNDERDRAIN SYSTEM AT TREE PLANTER ALL - SECTION
1" = 1'-0"



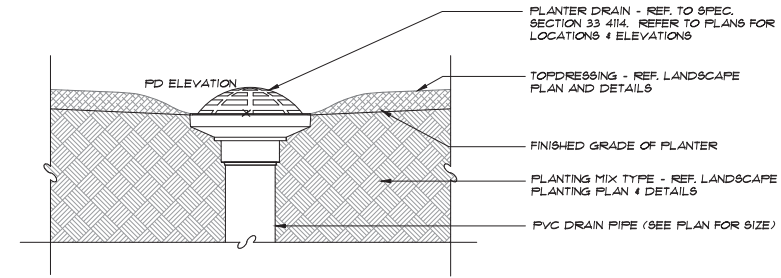
6 UNDERDRAIN SYSTEM AT TREE ROOT ALLS - SECTION
1" = 1'-0"



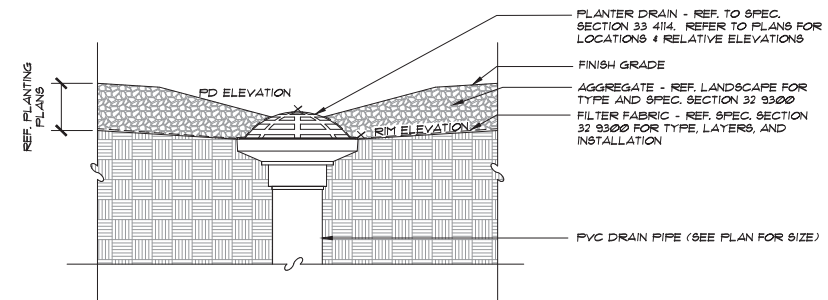
7 UNDERDRAIN SYSTEM AT ENTRY PLANTER - SECTION
1" = 1'-0"



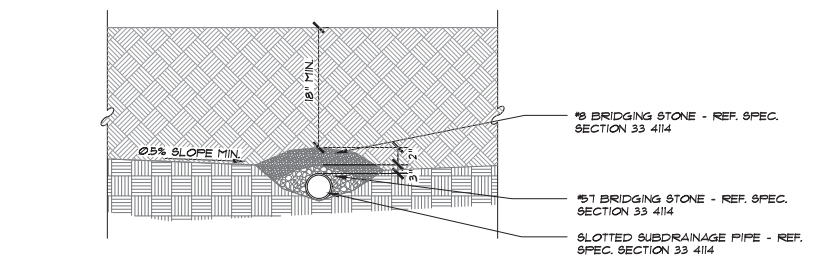
1 TR N LINE - SECTION
1" = 1'-0"



2 PLANTER DRAIN IN PLANTER - SECTION
NTS



3 PLANTER DRAIN AT AGGREGATE - SECTION
NTS



4 UNDERDRAIN SYSTEM IN PLANTER AREA - SECTION
1" = 1'-0"

HKS

ARCHITECT
HKS, INC.
300 N SAINT PAUL ST
SUITE 300
DALLAS, TX 75201

CIVIL ENGINEER
RAYMOND L. GOODSON JR., INC.
12001 N. CENTRAL EXPRESSWAY, SUITE 300
DALLAS, TEXAS 75243

LANDSCAPE
OCA LANDSCAPE ARCHITECTS, INC.
12700 HALLOCK RD, SUITE 140
DALLAS, TX 75230

STRUCTURAL
JQ INFRASTRUCTURE, LLC
100 GLASS STREET, SUITE 201
DALLAS, TEXAS 75201

MEP
ESTER MCCLURE & ASSOCIATES, INC.
3008 WEST WYK STREET
TYLER, TX 75703

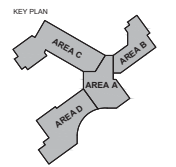
FOOD SERVICE
JAM FOODSERVICE CONSULTING & DESIGN, LLC
3431 LAKEVIEW PKWY, STE 205
ROWLETT, TX 75088

ISD

SMITHFIELD ELEMENTARY SCHOOL CAMPUS
REPLACEMENT AND THREE HIGH SCHOOL FINE
ARTS AUDITORIUM UPGRADES

OWNER
BROOKVILLE INDEPENDENT SCHOOL DISTRICT
8125 EAST BELLWAMP
HALTOM CITY, TX 76117

INTERIM REVIEW ONLY
These documents are incomplete, and are released for interim review only and are not intended for regulatory approval, permit, or construction purposes.
Architect: HKS, INC.
Arch. Reg. No.: 0000000000
Date: 12.18.2019



REVISION NO.	DESCRIPTION	DATE

PROJECT CASE NUMBER
SP 2019-18

HKS PROJECT NUMBER
22526.000

DATE
18 DECEMBER, 2019

ISSUE
75% CONSTRUCTION DOCUMENTS

SHEET TITLE
PLANTING DRAINAGE DETAILS

SHEET NO.
L3.07

CASE SP 2019-18
© 2019 HKS, INC.