

CONSTRUCTION PLANS FOR GREEN VALLEY RACEWAY HISTORICAL AREA NORTH RICHLAND HILLS, TEXAS

OWNER:

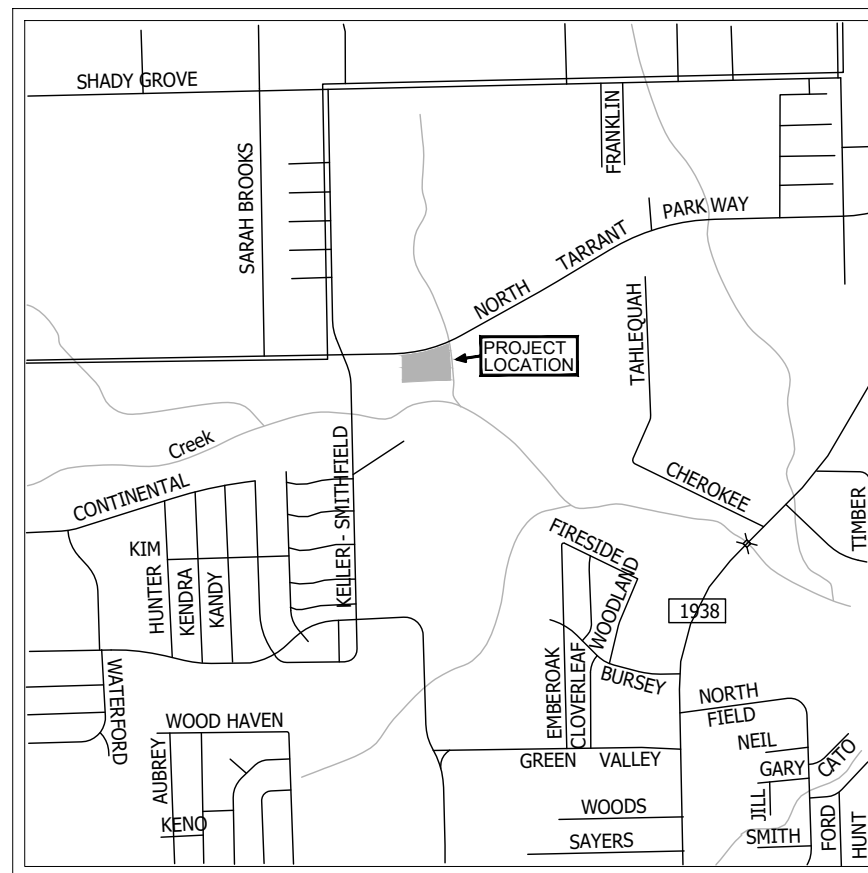
CITY OF NORTH RICHLAND HILLS
4301 CITY POINT DRIVE
NORTH RICHLAND HILLS, TX 76108
PHONE: (817) 427-6620

CITY COUNCIL:

OSCAR TREVINO	MAYOR
TITO RODRIGUEZ	PLACE 1
RITA WRIGHT OUJESKY	PLACE 2, MAYOR PRO TEM
SUZY COMPTON	PLACE 3,
MASON ORR	PLACE 4,
BLAKE VAUGHN	PLACE 5
SCOTT TURNAGE	PLACE 6 ASSOCIATE MAYOR PRO TEM
KELVIN DEUPREE	PLACE 7 DEPUTY MAYOR PRO TEM

PARKS AND RECREATION BOARD:

TRACYE LEWIS	PLACE 1, VICE CHAIR
KATE BECK	PLACE 2
RUSSELL MITCHELL	PLACE 3
VANESSA COPELAND	PLACE 4, CHAIR
CASEY DANIEL	PLACE 5
BRAD EVANS	PLACE 6
RUSS MURDOCK	PLACE 7
SAMUEL ROBISON	ALTERNATE



LOCATION MAP
(NOT TO SCALE)

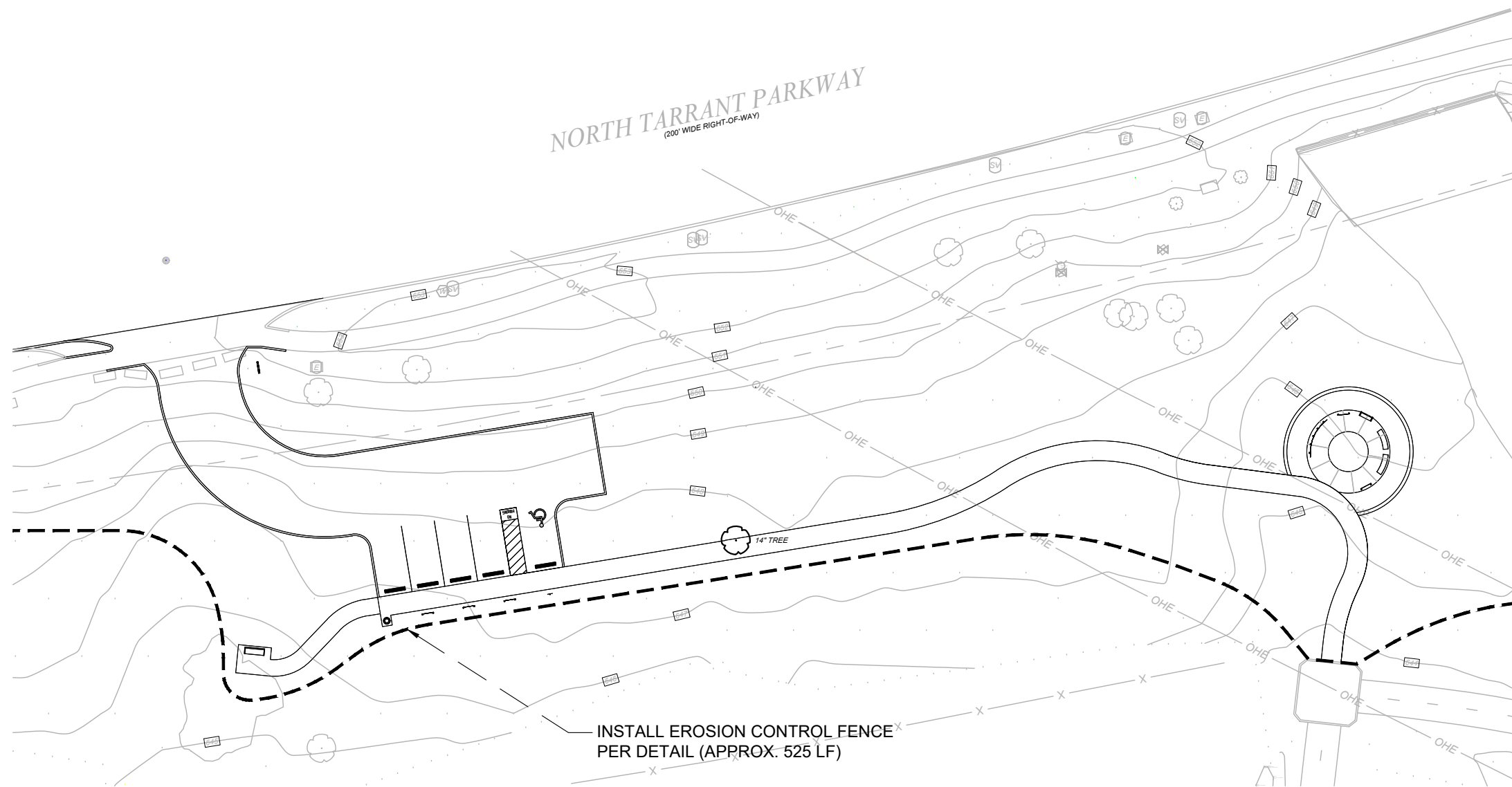
SHEET INDEX:

Sheet Number	Sheet Title
L-00	COVER SHEET
L-01	SURVEY CONTROL
L-02	EROSION CONTROL PLAN
L-03	DEMOLITION PLAN
L-04	GRADING PLAN
L-05	MATERIALS PLAN
L-06	LAYOUT PLAN - PARKING LOT
L-07	LAYOUT PLAN - TRAIL CONNECTION
L-08	LAYOUT PLAN - ENLARGEMENT A
L-09	LAYOUT PLAN - ENLARGEMENT B
L-10	SITE DETAILS
L-11	SITE DETAILS
L-12	SITE DETAILS
L-13	SITE DETAILS
L-14	SITE DETAILS
L-15	PLANTING PLAN (ALTERNATE 2)
L-16	PLANTING DETAILS (ALTERNATE 2)
L-17	IRRIGATION PLAN (ALTERNATE 2)
L-18	IRRIGATION DETAILS (ALTERNATE 2)



CITY OF NORTH
RICHLAND HILLS





EROSION CONTROL NOTES:

1. PURSUANT TO THE PROJECT REQUIREMENTS, THE CONTRACTOR SHALL PREPARE A STORM WATER POLLUTION PREVENTION PLAN.
2. THE DRAWINGS CONTAINED HEREIN ARE NOT, AND SHOULD NOT BE CONSIDERED TO BE A STORM WATER POLLUTION PREVENTION PLAN. SHOULD THE CONTRACTOR CHOOSE TO USE THE INFORMATION HEREIN, THEY SHALL DO SO WITH THE PROVISION THAT THEY AT A MINIMUM MEET ALL OF THE PERMIT REQUIREMENTS FOR CONSTRUCTION ACTIVITIES UNDER APPLICABLE TCEQ PERMITS, RULES, REGULATIONS, AND CODES.

CONSTRUCTION PHASING

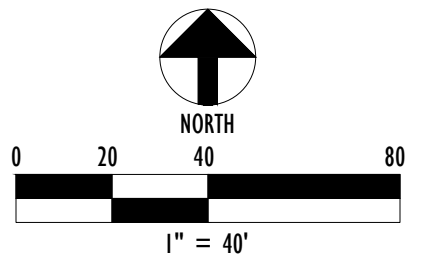
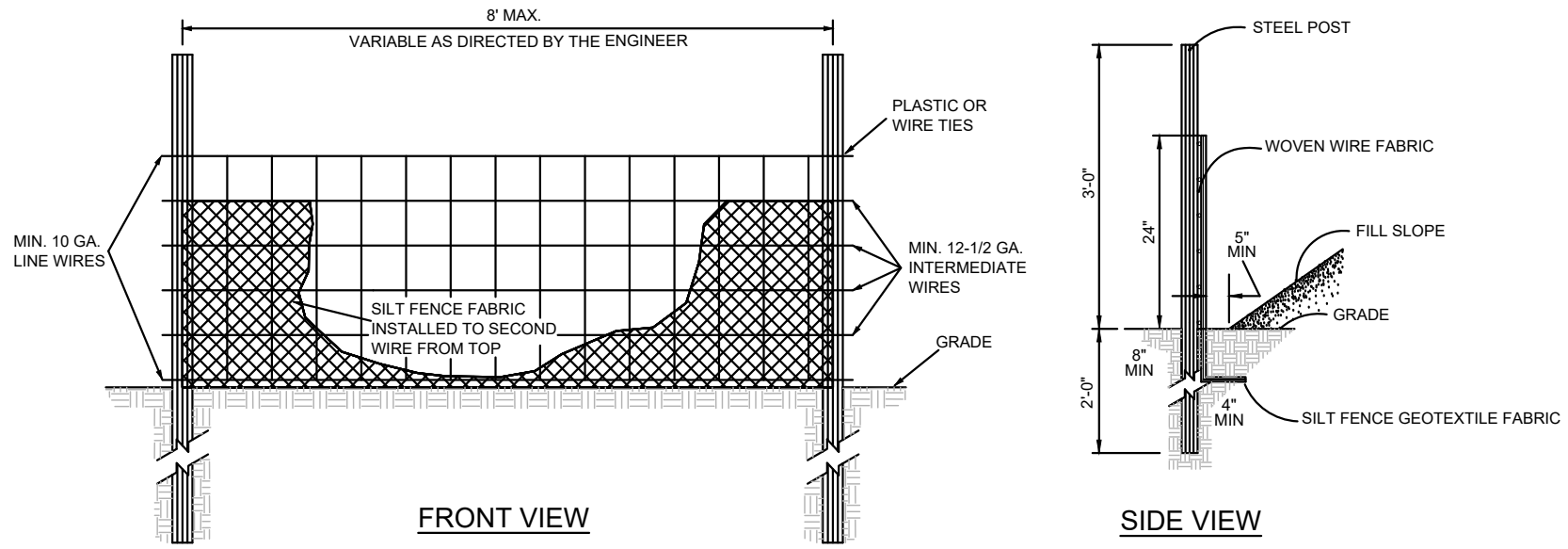
- PHASE I INSTALL EROSION CONTROL DEVICES
- PHASE II SITE CLEARING, DEMOLITION & GRADING EXCAVATION
- PHASE III GRADING & SITE UTILITIES
- PHASE IV SITE PAVING, LANDSCAPE & IRRIGATION
- PHASE V FINAL STABILIZATION

PHASE I
 INSTALL EROSION CONTROLS:
 REINFORCED SILT FENCES, FILTER TUBE, INLET PROTECTION STABILIZED CONSTRUCTION ENTRANCE/EXIT

PHASE II, III, IV
 MAINTAIN EXISTING EROSION CONTROLS, ADD ADDITIONAL EROSION CONTROLS AS NEEDED

PHASE V
 REVEGETATE ALL DISTURBED AREAS NOT COVERED IN THE LANDSCAPE PLAN, ESTABLISH MIN. COVER OF 70% OF THE NATIVE BACKGROUND COVER. REMOVE EROSION CONTROLS WHEN 70% MIN. COVER HAS BEEN ESTABLISHED.

REVISIONS	REV #	DATE	DESCRIPTION



PROJECT #	PK1801	SHEET #
ISSUED DATE	02-09-23	L-02
DRAWN BY	MAW	
CHECKED BY	MAW	

GREEN VALLEY RACEWAY HISTORICAL AREA

GRADING PLAN

PROJECT TITLE

SHEET TITLE

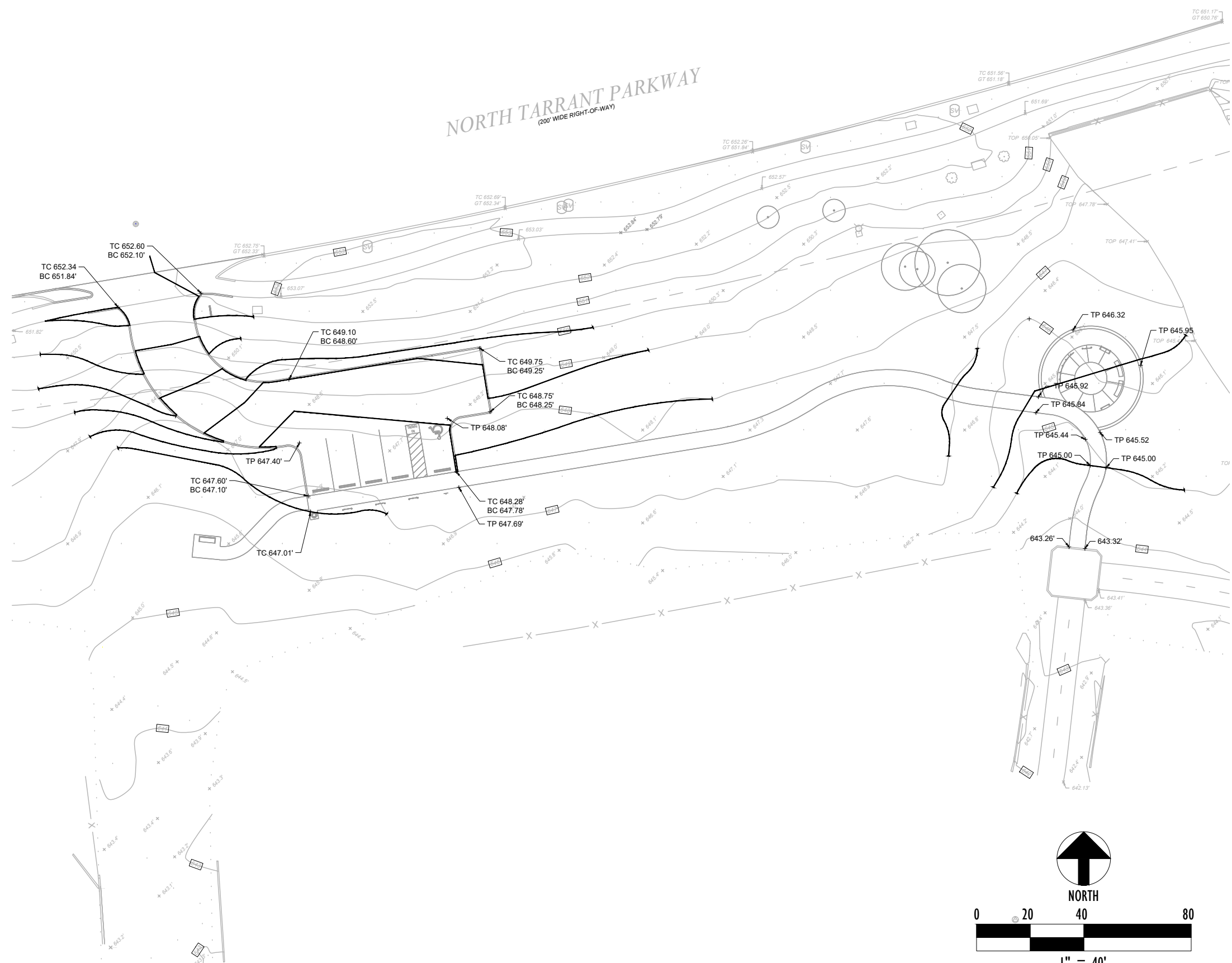
LEGEND

- EXISTING CONTOURS
- PROPOSED CONTOURS
- - - - - PROPOSED SWALE CENTERLINE

- TC TOP OF CURB
- BC BOTTOM OF CURB
- TP TOP OF PAVEMENT

GRADING NOTES:

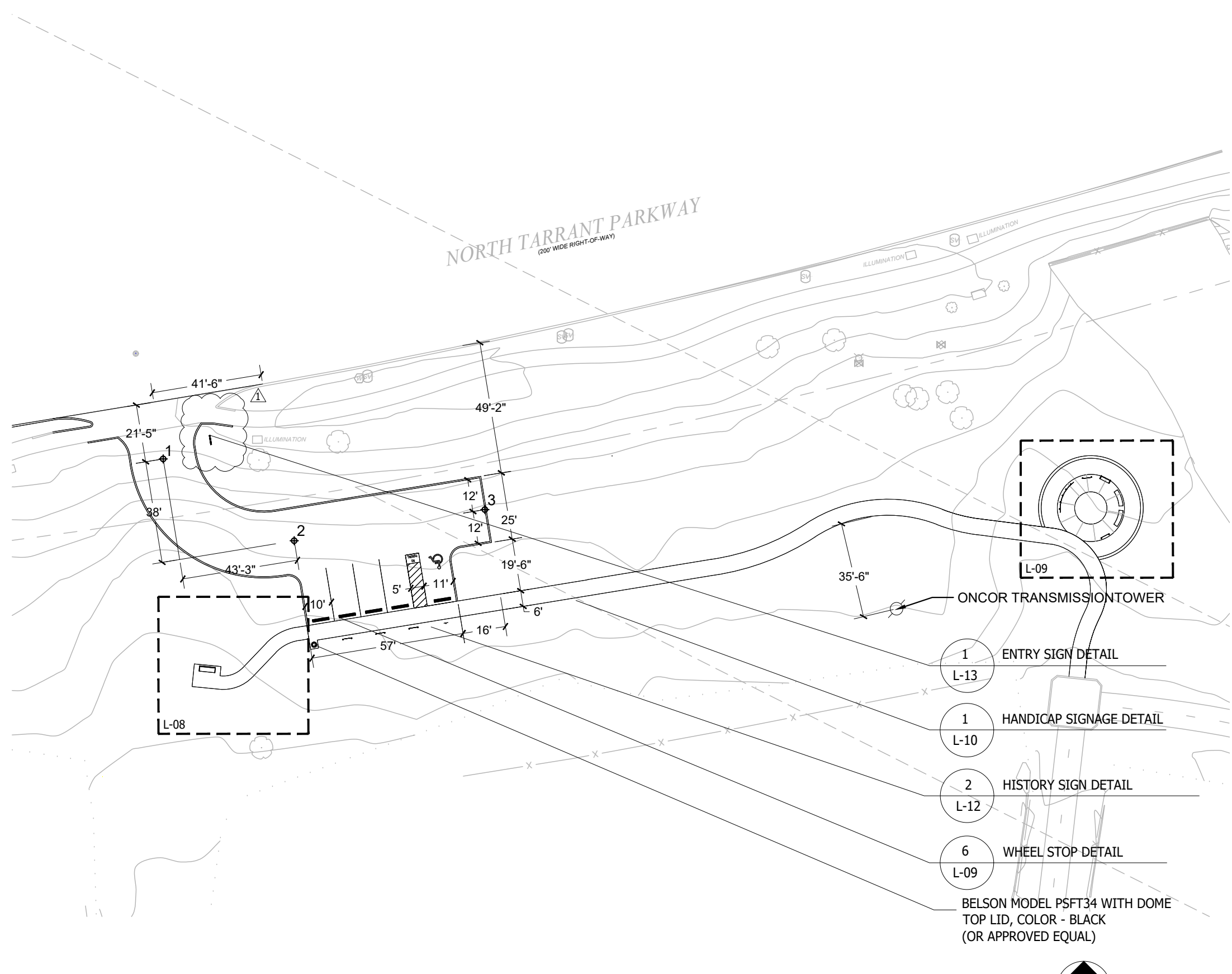
1. ALL PROPOSED GRADES INDICATED ARE FINISHED GRADES. THE CONTRACTOR IS RESPONSIBLE FOR EXCAVATING FOR IMPROVEMENTS AS PART OF THE OVERALL MASS GRADING.
2. ALL LANDFORMS AND SWALES SHALL BE GRADED TO BE A SMOOTH, FLOWING, ROUNDED SURFACE PROVIDING POSITIVE DRAINAGE AND VISUAL CONTINUITY.
3. NO GRADE CHANGES MORE THAN 3" IS ALLOWED WITHIN THE ROOT PROTECTION ZONE OF ANY TREE ON THE SITE.
4. GRADING FOR IMPROVEMENTS SHALL OCCUR AS DIRECTED BY THE LANDSCAPE ARCHITECT WITH THE FOLLOWING GUIDELINES:
 - ALL WALKS SHALL HAVE A MAXIMUM CROSS SLOPE OF 2% (1:48) IN THE DIRECTION OF THE DOWNHILL SIDE.
 - THE LONGITUDINAL SLOPE OF THE WALKS SHALL BE NO GREATER THAN 5% (1:20).
 - ALL GRADES SHALL BE FINISHED TO A SMOOTH, FLOWING CONTOUR, MAINTAINING EXISTING FLOW PATTERNS UNLESS OTHERWISE DIRECTED.
5. REFER TO EXISTING CONDITIONS AND REMOVAL ITEMS PLAN FOR SURVEY, BENCHMARKS, AND CLEARING INFORMATION.
6. REFER TO LAYOUT PLAN FOR LAYOUT INFORMATION.
7. CONTRACTOR WILL BE RESPONSIBLE FOR PROVIDING 4" OF TOPSOIL AND ESTABLISHING COMPLETE STAND OF BERMUDAGRASS ON ALL DISTURBED AREAS PRIOR TO FINAL ACCEPTANCE.



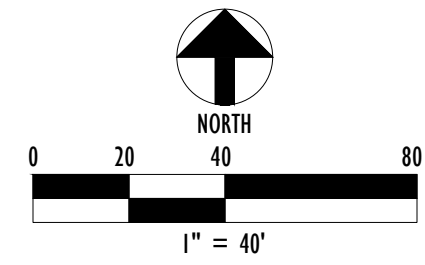
REVISIONS	REV #	DATE	DESCRIPTION

PROJECT #	PK1801	SHEET #
ISSUED DATE	02-09-23	L-04
DRAWN BY	MAW	
CHECKED BY	MAW	

PROJECT TITLE
**GREEN VALLEY RACEWAY
HISTORICAL AREA**
SHEET TITLE
LAYOUT PLAN - PARKING LOT



POINT	NORTHING	EASTING
1	7,012,778.689	2,363,686.414
2	7,012,748.178	2,363,735.267
3	7,012,759.795	2,363,806.319



- LEGEND**
- CONTROL POINT
 - POWER POLE
 - LIGHT POLE
 - TREE (AS DESCRIBED)
 - CM (CREPE MYRTLE)
 - WATER VALVE
 - FIRE HYDRANT

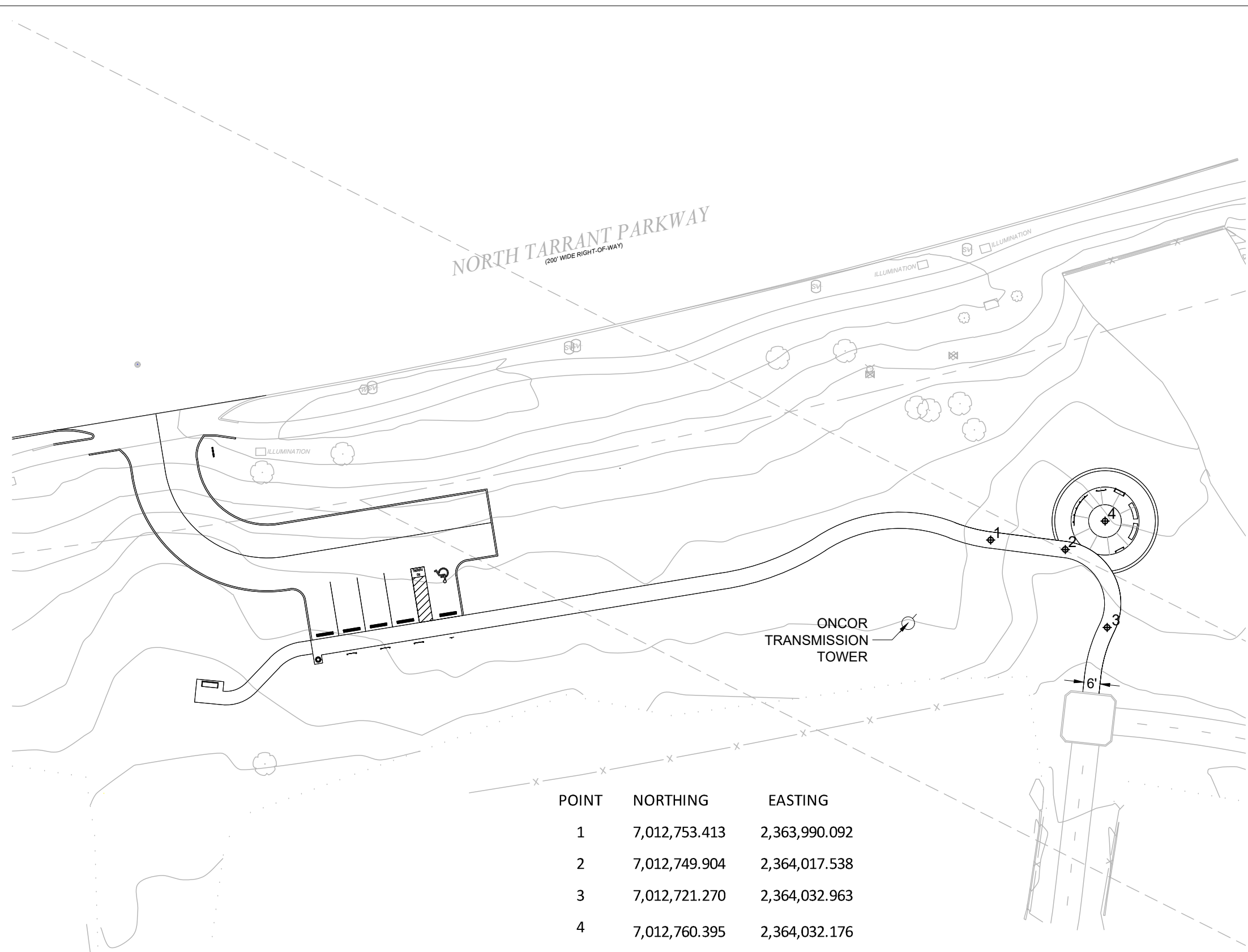
- LAYOUT NOTES:**
- WRITTEN DIMENSIONS AND COORDINATES SHALL GOVERN OVER SCALED DRAWINGS.
 - THE CONTRACTOR SHALL NOTIFY THE DESIGN CONSULTANT AND/OR OWNER'S INSPECTOR A MINIMUM OF 24 HOURS PRIOR TO THE PLANNED PLACEMENT OF CONCRETE. THE CITY INSPECTOR MUST HAVE OBSERVED AND APPROVED THE FORM WORK AND REINFORCEMENT PRIOR TO PLACEMENT OF CONCRETE.
 - ALL EXPANSION AND CONTROL JOINTS SHALL BE PLACED AS SPECIFIED ON THE CONSTRUCTION PLANS AND DETAILS.
 - ALL SAW JOINTS SHALL BE SAWN WITHIN 24 HOURS OF CONCRETE PLACEMENT. ANY CONCRETE SAWN LATER THAN THIS WHICH, IN THE OPINION OF THE DESIGN CONSULTANT AND/OR OWNER, HAS EXCESSIVE SHRINKAGE CRACKS DUE TO NOT HAVING BEEN SAWN IN A TIMELY MANNER, SHALL BE REMOVED AND REPLACED AT THE CONTRACTOR'S EXPENSE.
 - THE EDGES OF ALL FINISHED PAVING SHALL BE STRAIGHT OR SMOOTH CURVES WITH NO INTERRUPTIONS SUCH AS CHORDS, WAVES, JOGS, OR MISSED TANGENTS. PAVEMENT WITH SUCH INTERRUPTIONS SHALL BE REMOVED AND REPLACED AT THE CONTRACTOR'S EXPENSE.
 - ALL EXPANSION JOINTS SHALL BE PRE-MOLDED JOINT MATERIAL OR CEDAR EXPANSION JOINT WITH ZIP-STRIP. ALL JOINTS SHALL RECEIVE SELF-LEVELING JOINT SEALANT COLOR MATCHED TO CONCRETE FINISH.
 - NO CONCRETE SHALL BE PLACED IN INCLEMENT WEATHER AS SPECIFIED IN THE CITY'S STANDARD CONSTRUCTION SPECIFICATIONS.
 - CONTRACTOR IS NOT TO PLACE ASPHALT PRODUCTS ON GROUND WITHIN 48 HOURS OF FORECASTED RAIN.

REVISIONS








REV #	DATE	DESCRIPTION



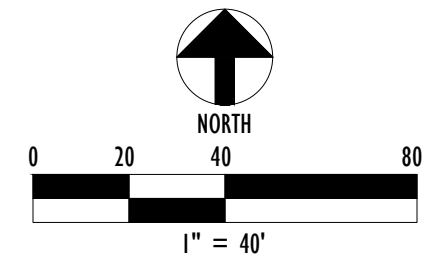
PROJECT #	PK1801	SHEET #
ISSUED DATE	02-09-23	L-06
DRAWN BY	MAW	
CHECKED BY	MAW	



LEGEND

-  CONTROL POINT
-  POWER POLE
-  LIGHT POLE
-  TREE (AS DESCRIBED)
-  CM (CREPE MYRTLE)
-  WATER VALVE
-  FIRE HYDRANT

POINT	NORTHING	EASTING
1	7,012,753.413	2,363,990.092
2	7,012,749.904	2,364,017.538
3	7,012,721.270	2,364,032.963
4	7,012,760.395	2,364,032.176



PROJECT TITLE
**GREEN VALLEY RACEWAY
 HISTORICAL AREA**

SHEET TITLE
LAYOUT PLAN - TRAIL CONNECTION

REVISIONS	REV #	DATE	DESCRIPTION



PROJECT #	PK1801	SHEET #
ISSUED DATE	02-09-23	L-07
DRAWN BY	MAW	
CHECKED BY	MAW	

PROJECT TITLE
**GREEN VALLEY RACEWAY
HISTORICAL AREA**

SHEET TITLE
LAYOUT PLAN ENLARGEMENT A

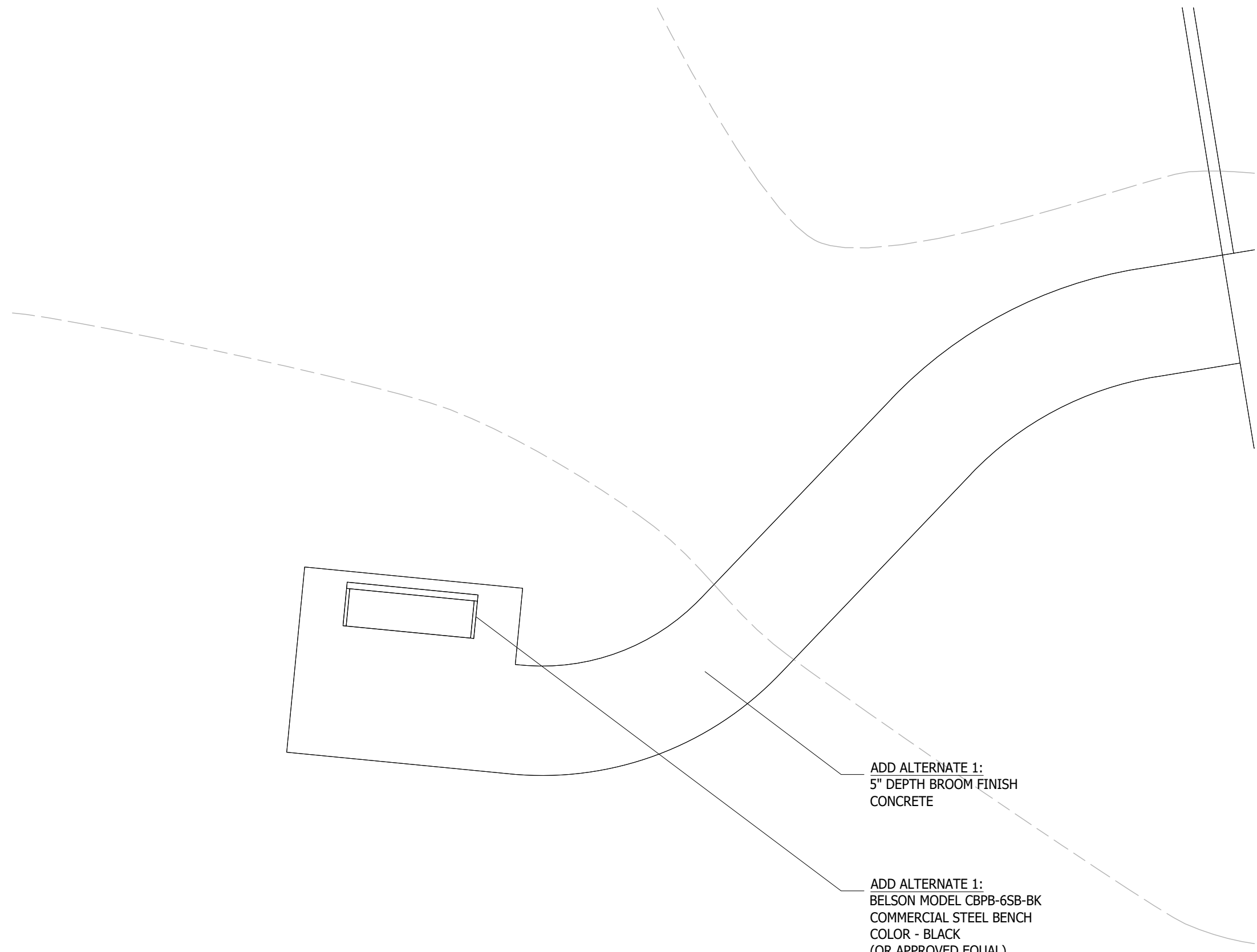
PROJECT TITLE

SHEET TITLE

REVISIONS		DATE	DESCRIPTION
REV #			

2-9-23

PROJECT #	PK1801	SHEET #
ISSUED DATE	02-09-23	L-08
DRAWN BY	MAW	
CHECKED BY	MAW	

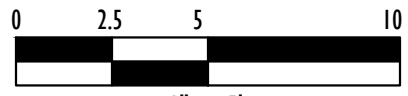


ADD ALTERNATE 1:
5" DEPTH BROOM FINISH
CONCRETE

ADD ALTERNATE 1:
BELSON MODEL CBPB-6SB-BK
COMMERCIAL STEEL BENCH
COLOR - BLACK
(OR APPROVED EQUAL)



NORTH



1" = 5'

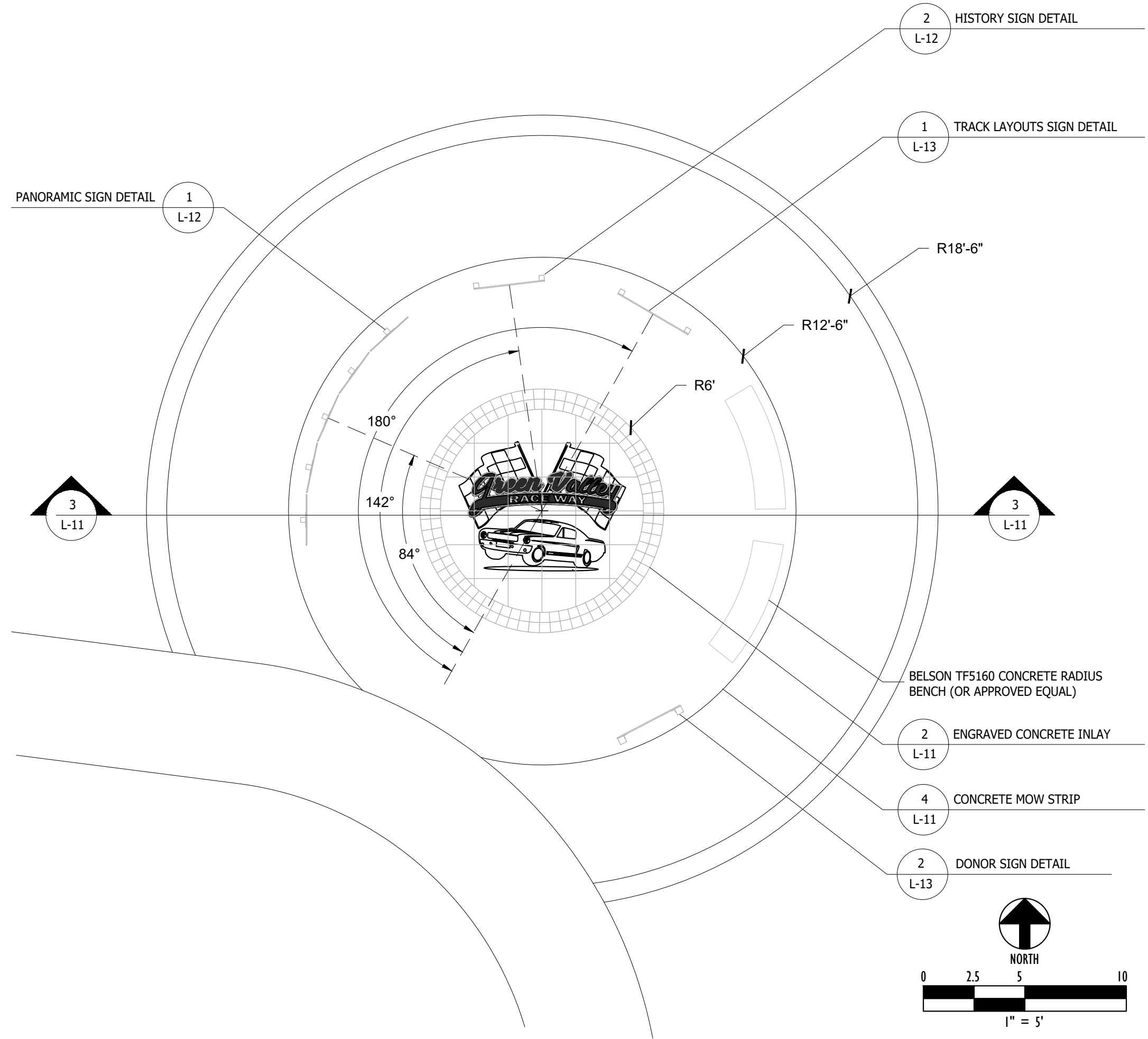
PROJECT TITLE
**GREEN VALLEY RACEWAY
HISTORICAL AREA**

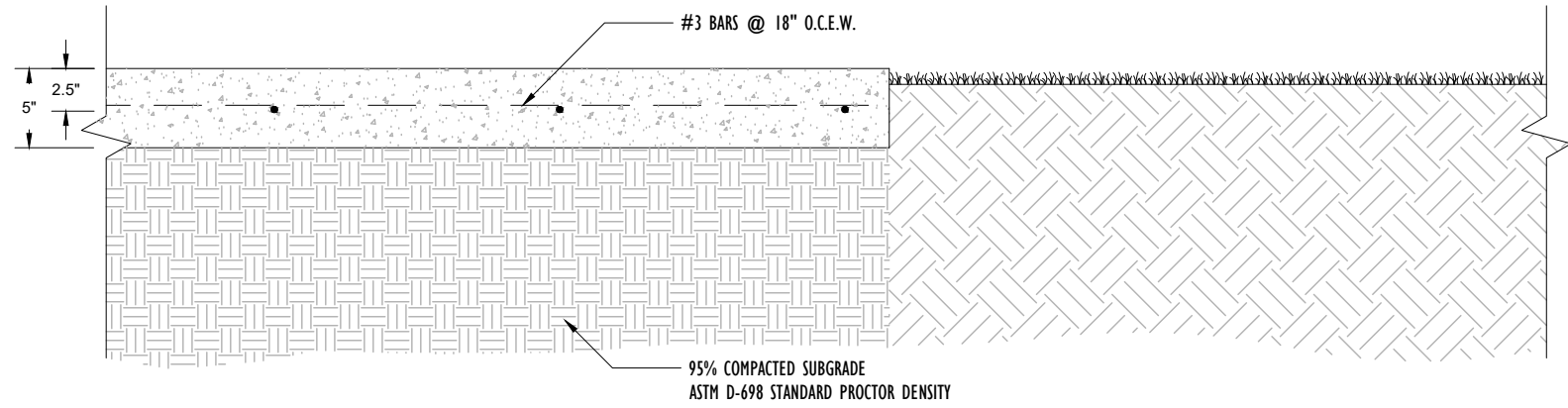
SHEET TITLE
LAYOUT PLAN ENLARGEMENT B

REVISIONS	REV #	DATE	DESCRIPTION

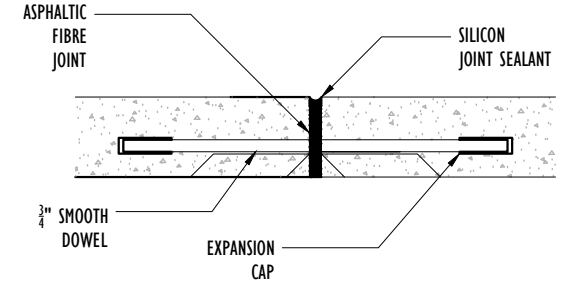


PROJECT #	PK1801	SHEET #
ISSUED DATE	02-09-23	L-09
DRAWN BY	MAW	
CHECKED BY	MAW	

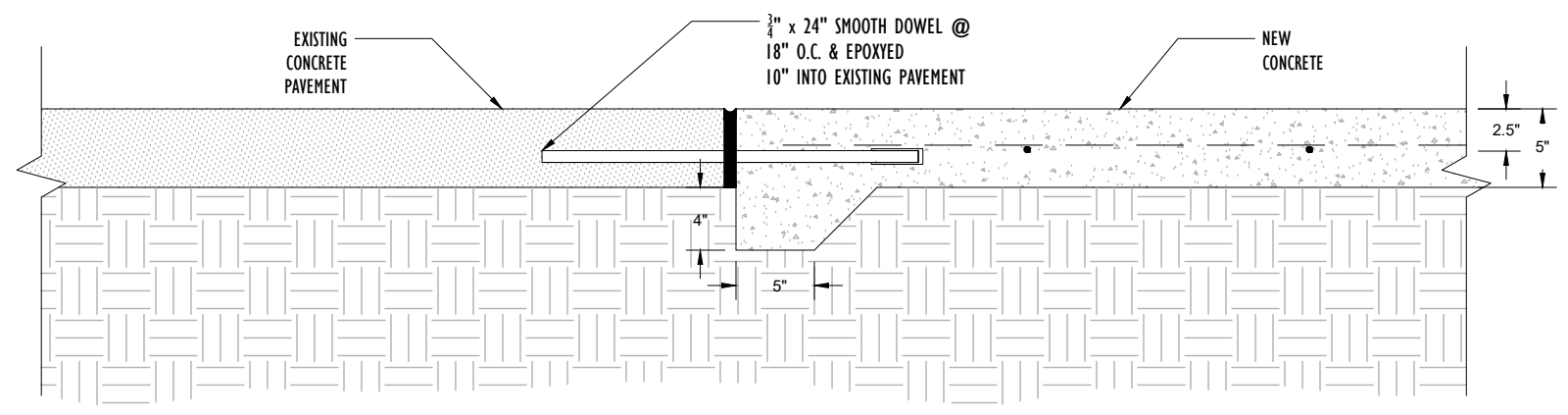




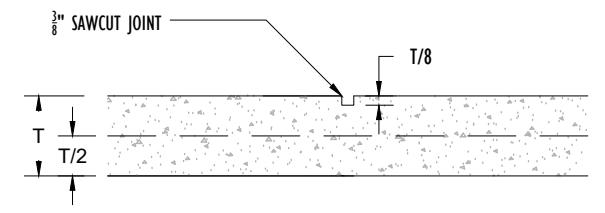
1 TYPICAL PAVING - PEDESTRIAN, VEHICULAR, INTEGRAL COLOR
NTS



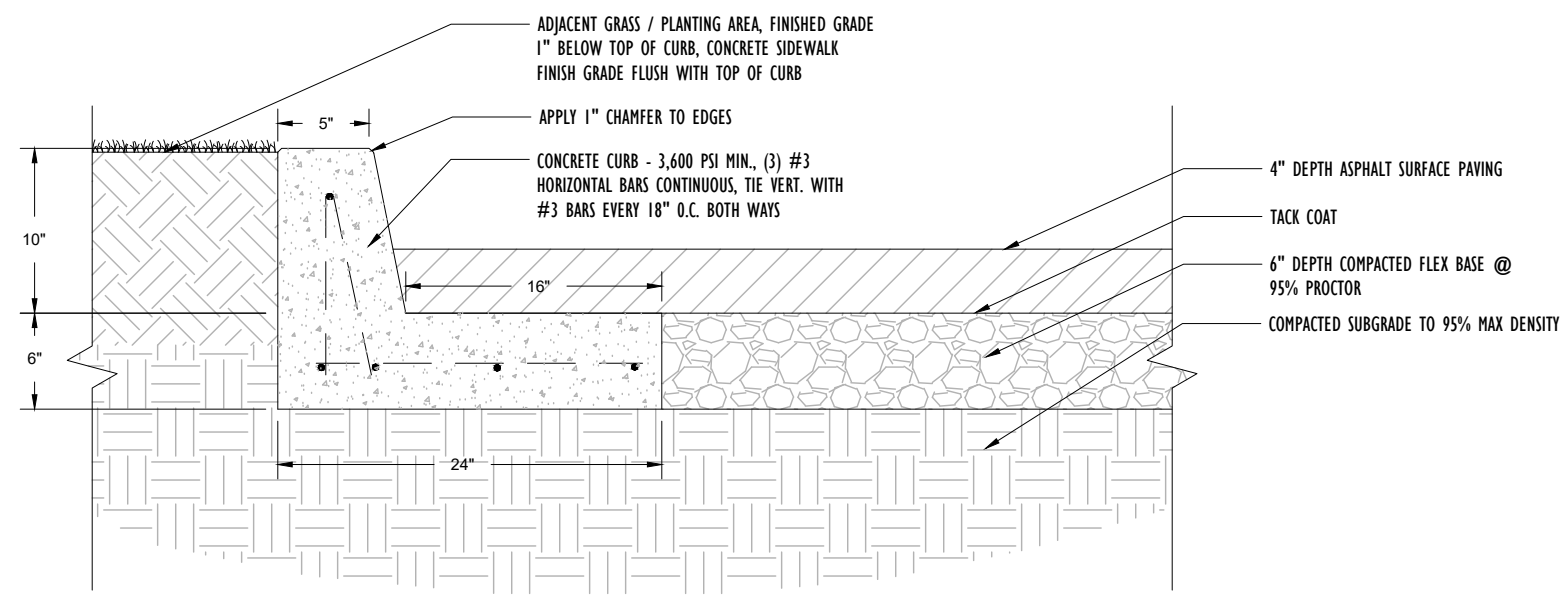
2 EXPANSION JOINT DETAIL
NTS



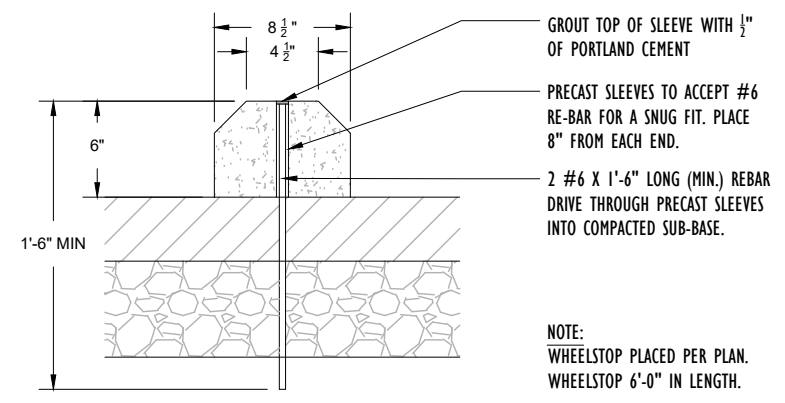
3 EXPANSION CONSTRUCTION JOINT
(BETWEEN EXISTING AND PROPOSED PAVEMENT)
NTS



4 CONTROL JOINT DETAIL
NTS



5 ASPHALT VEHICULAR PAVING WITH CONCRETE CURB
NTS



6 CONTROL JOINT DETAIL
NTS

REVISIONS	REV #	DATE	DESCRIPTION

REGISTERED LANDSCAPE ARCHITECT
MICHAEL WILSON
STATE OF TEXAS
3068
2-9-23

PROJECT #	PK1801	SHEET #
ISSUED DATE	02-09-23	L-10
DRAWN BY	MAW	
CHECKED BY	MAW	

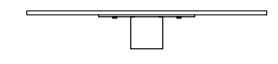
PROJECT TITLE
**GREEN VALLEY RACEWAY
HISTORICAL AREA**

SHEET TITLE
SITE DETAILS

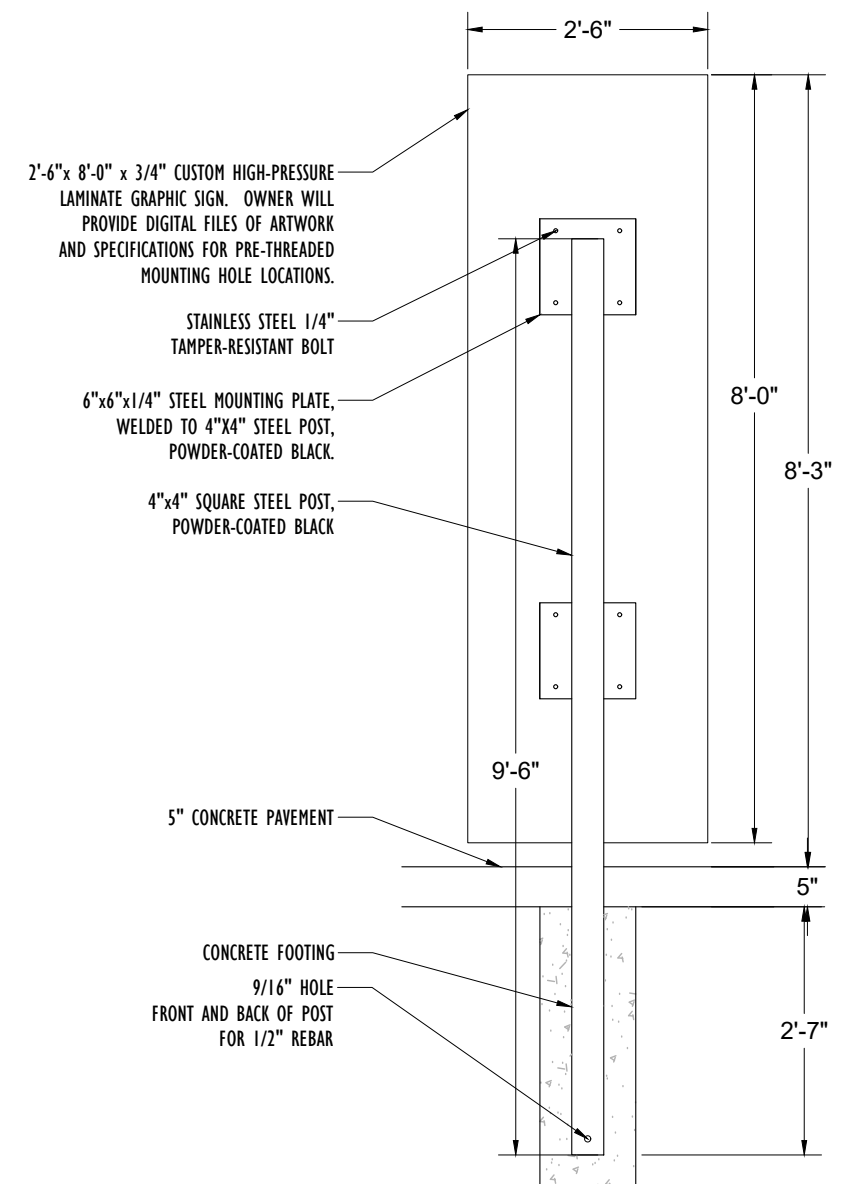
REVISIONS	REV #	DATE	DESCRIPTION

REGISTERED LANDSCAPE ARCHITECT
MICHAEL WILSON
3068
STATE OF TEXAS
2-9-23

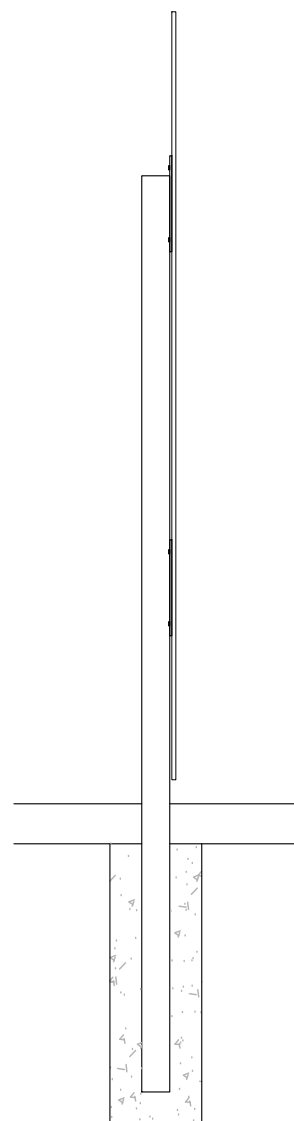
PROJECT #	PK1801	SHEET #
ISSUED DATE	02-09-23	L-12
DRAWN BY	MAW	
CHECKED BY	MAW	



TOP VIEW



REAR VIEW

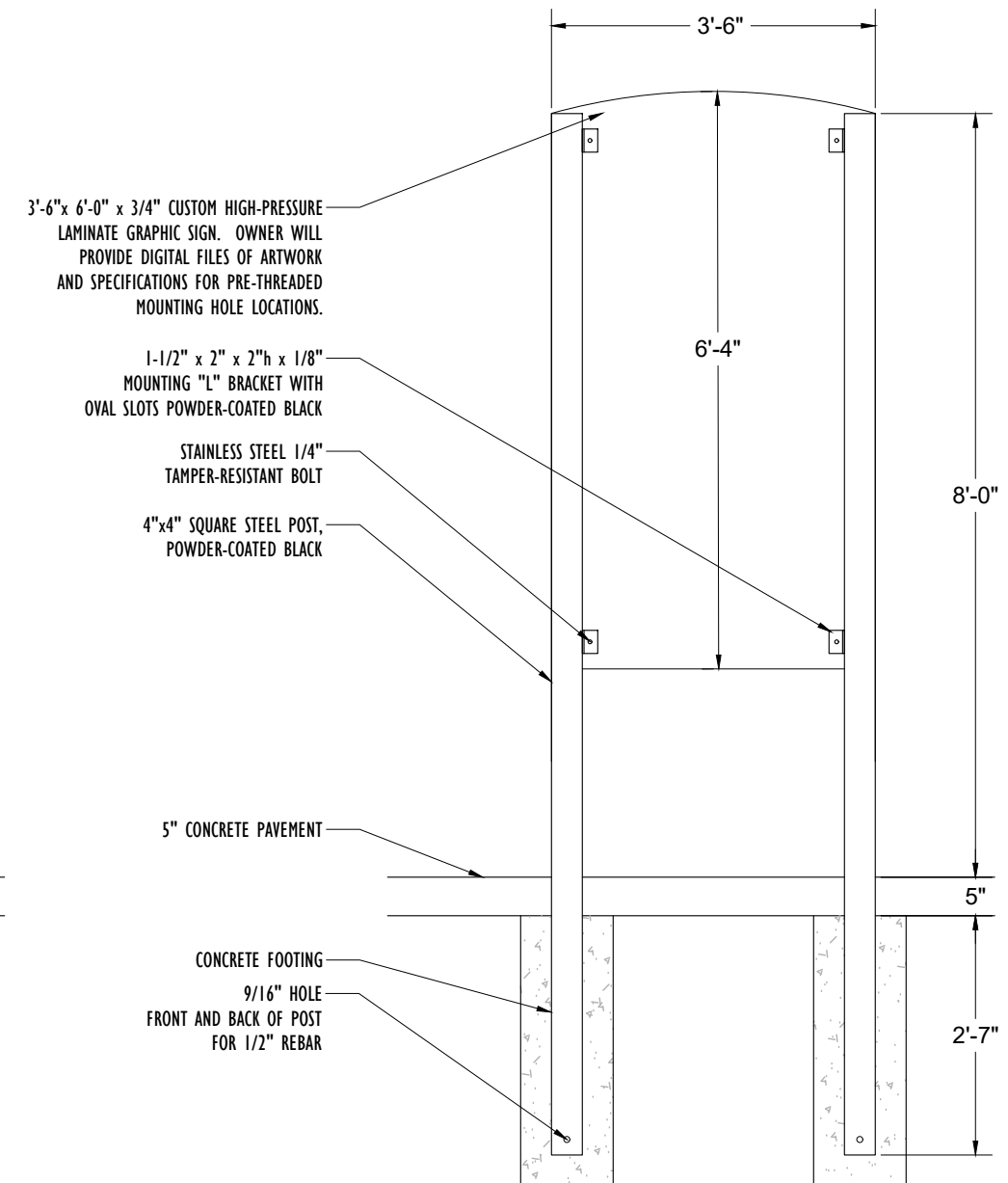


SIDE VIEW

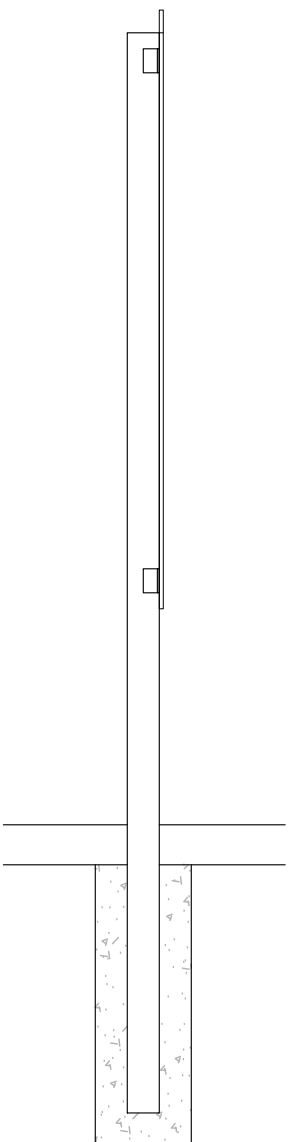
1 PANORAMIC DISPLAY SIGN DETAIL
NTS



TOP VIEW



REAR VIEW

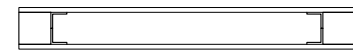


SIDE VIEW

2 HISTORY SIGN DETAIL
NTS

PROJECT TITLE
**GREEN VALLEY RACEWAY
HISTORICAL AREA**

SHEET TITLE
SITE DETAILS



TOP VIEW

3'-6" x 3'-6 1/2" x 3/4" CUSTOM HIGH-PRESSURE LAMINATE GRAPHIC SIGN. OWNER WILL PROVIDE DIGITAL FILES OF ARTWORK AND SPECIFICATIONS FOR PRE-THREADED MOUNTING HOLE LOCATIONS.

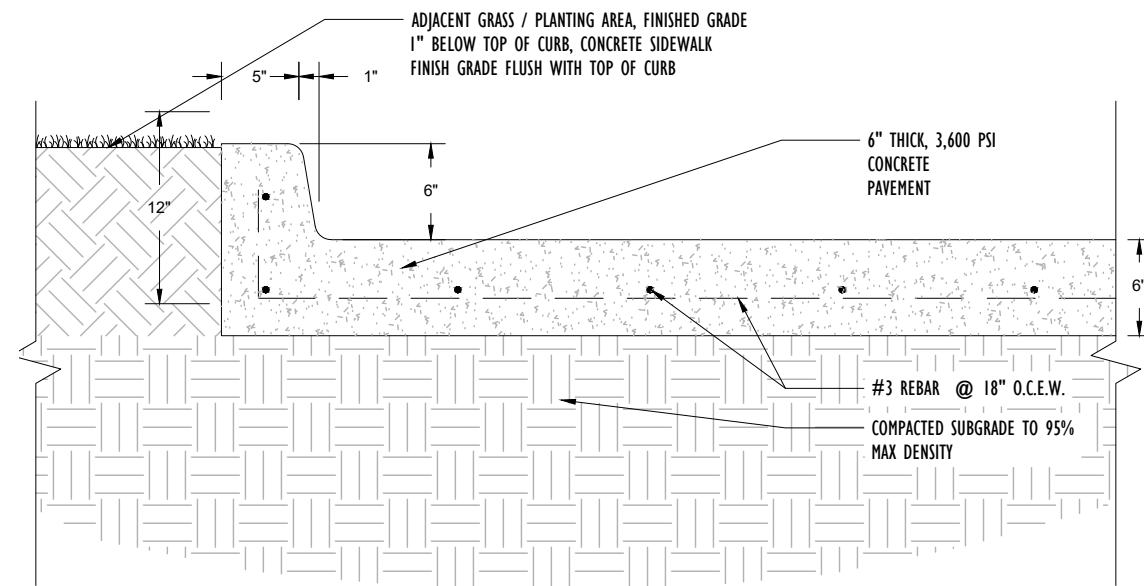
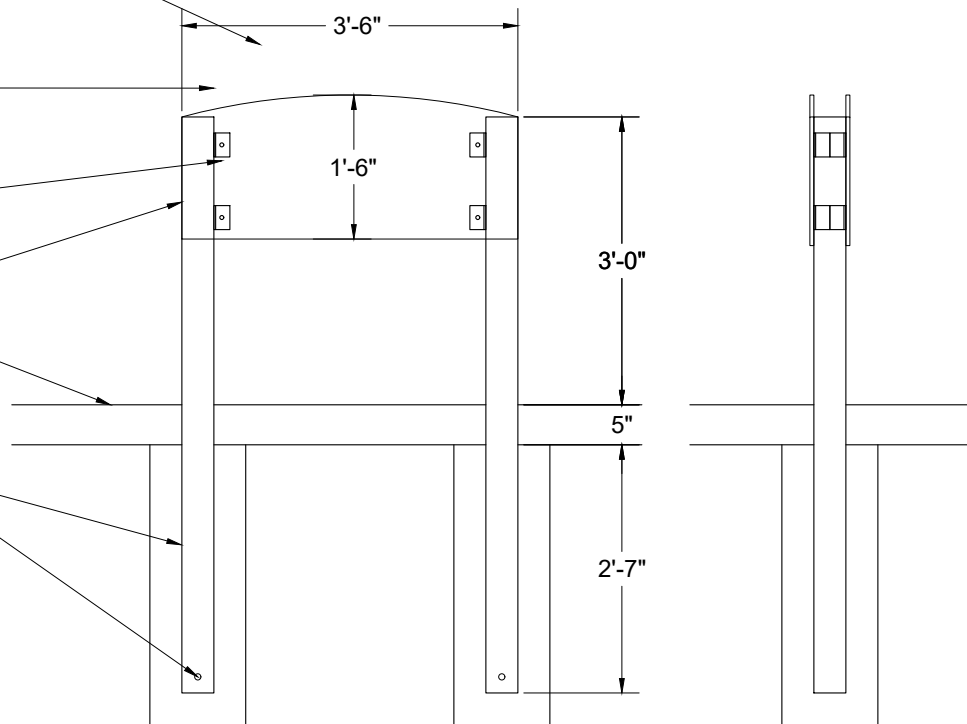
1-1/2" x 2" x 2" h x 1/8" MOUNTING "L" BRACKET WITH OVAL SLOTS POWDER-COATED BLACK

STAINLESS STEEL 1/4" TAMPER-RESISTANT BOLT

4"x4" SQUARE STEEL POST, POWDER-COATED BLACK

5" CONCRETE PAVEMENT

CONCRETE FOOTING
9/16" HOLE
FRONT AND BACK OF POST
FOR 1/2" REBAR



1 ENTRY SIGN DETAIL
NTS

2 CONCRETE VEHICULAR PAVING WITH MONOLITHIC CURB
NTS

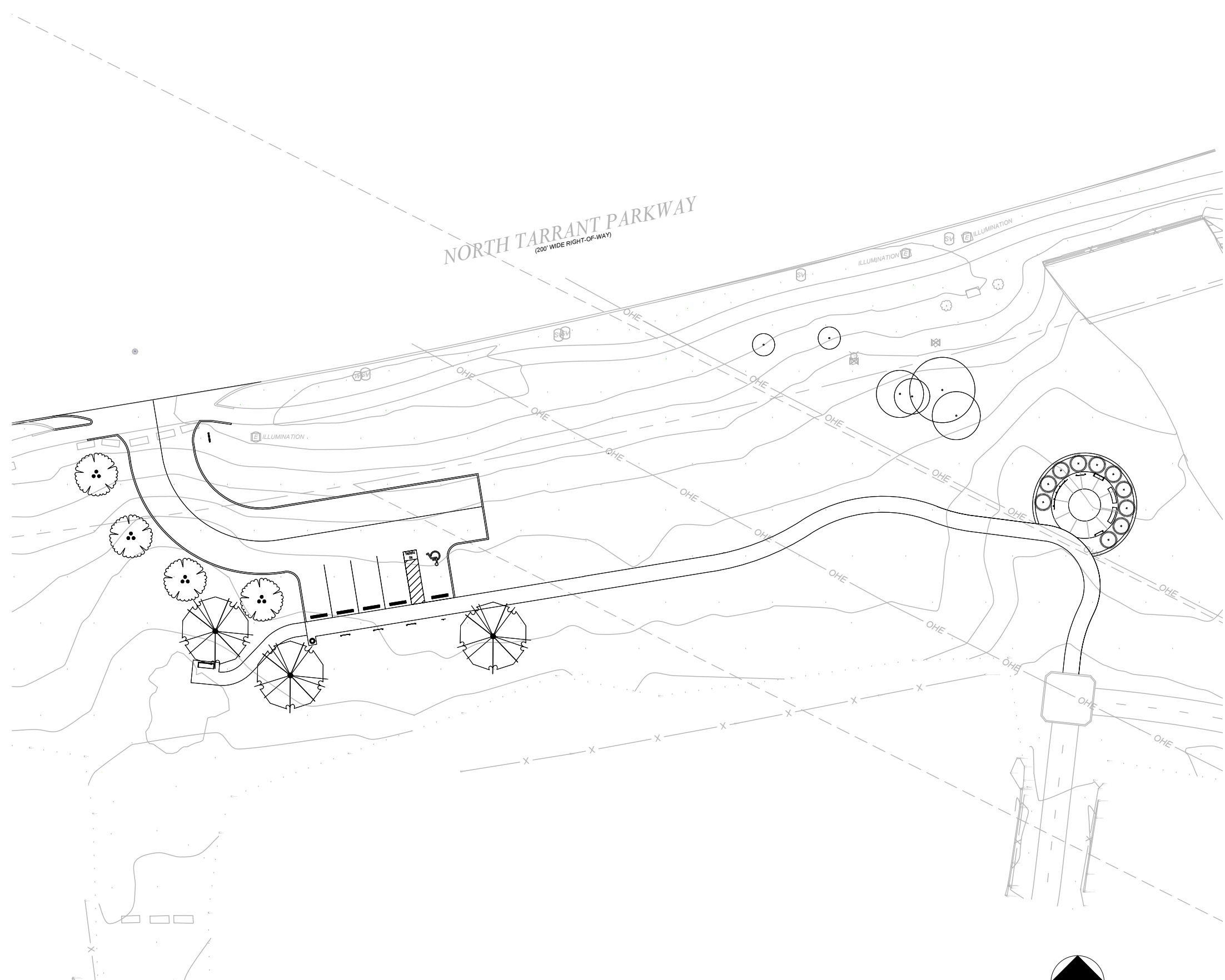
REVISIONS	REV #	DATE	DESCRIPTION

2-9-23

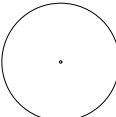
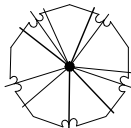


PROJECT #	PK1801	SHEET #
ISSUED DATE	02-09-23	L-13
DRAWN BY	MAW	
CHECKED BY	MAW	

PROJECT TITLE
**GREEN VALLEY RACEWAY
HISTORICAL AREA**

SHEET TITLE
PLANTING PLAN (ADD ALTERNATE 2)



LEGEND

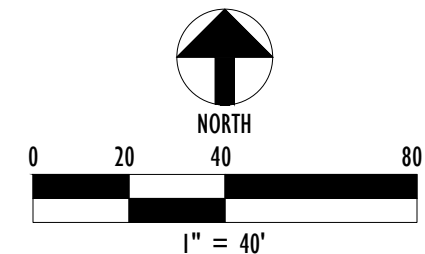
-  EXISTING TREE
(TO BE PRESERVED)
-  CEDAR ELM
-  DESERT WILLOW
-  'NELLIE R STEVENS' HOLLY

LAYOUT NOTES:

1. ALL PLANT LOCATIONS SHALL BE STAKED IN FIELD BY CONTRACTOR AND APPROVED BY THE LANDSCAPE ARCHITECT OR OWNER PRIOR TO INSTALLATION.
2. PLANTING SHALL OCCUR ONLY WHEN IRRIGATION IS COMPLETELY INSTALLED AND OPERATIONAL.
3. THE CONTRACTOR SHALL PROVIDE POSITIVE DRAINAGE AWAY FROM ALL SITE FEATURES.
4. CONTRACTOR WILL BE RESPONSIBLE FOR RE-ESTABLISHING TURFGRASS ON ALL DISTURBED AREAS.
5. PREPARED SOIL SHALL BE FROM APPROVED SOURCES. MATERIALS TO BE A MIXTURE OF PARTIALLY DECOMPOSED ORGANIC MATTER, SANDY LOAM TOPSOIL TO BE PREPARED BY: VITAL EARTH, SOIL BUILDING SYSTEMS, SILVER CREEK, ETC. SOIL MIX TO BE APPROVED BY OWNER PRIOR TO INSTALLATION.
6. ALL PLANT MATERIALS SHALL CONFORM TO SPECIFICATION REQUIREMENTS AND BE HEALTHY, VIGOROUS STOCK GROWN IN A RECOGNIZED NURSERY IN ACCORDANCE WITH SOUND HORTICULTURAL PRACTICES, BE FREE FROM DISEASE, INSECTS, AND DEFECTS. PROVIDE REPRESENTATIVE SAMPLES TO OWNER FOR APPROVAL.
7. THROUGHOUT THE SCOPE OF CONSTRUCTION, THE CONTRACTOR WILL BE RESPONSIBLE FOR MAINTAINING THE LANDSCAPE IN A NEAT AND ORDERLY MANNER AT ALL TIMES.

PLANT LIST

LATIN NAME	COMMON NAME	QTY	SIZE
ULMUS CRASSIFOLIA	CEDAR ELM	3	45G, 8-10FT HEIGHT, CONTAINER GROWN
CHILOPSIS LINEARIS	DESERT WILLOW	4	25G
ILEX X 'NELLIE R STEVENS'	'NELLIE R STEVENS' HOLLY	10	15G



REVISIONS

REV #	DATE	DESCRIPTION



Michael Wilson
2-9-23

PROJECT #	PK1801	SHEET #
ISSUED DATE	02-09-23	L-15
DRAWN BY	MAW	
CHECKED BY	MAW	

LEGEND

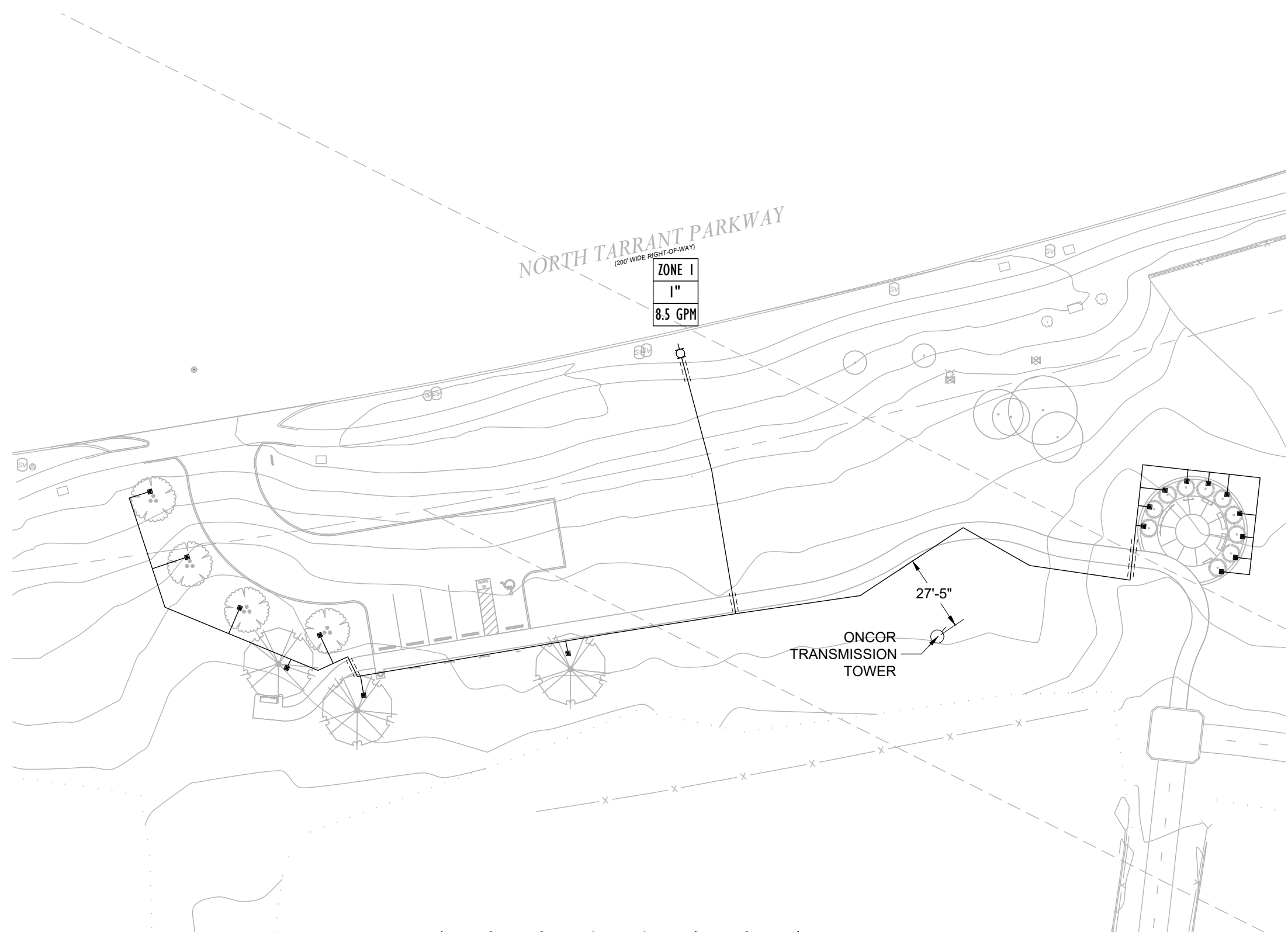
- 3/4" CLASS 200 LATERAL LINE AND BURIED TO 12" DEPTH MINIMUM
- - - - 2" SLEEVES, SCHED 40 THROUGHOUT WIRES AND PIPING IN SEPARATE SLEEVES

ZONE X	STATION LABEL
X"	zone #
X GPM	valve size gpm

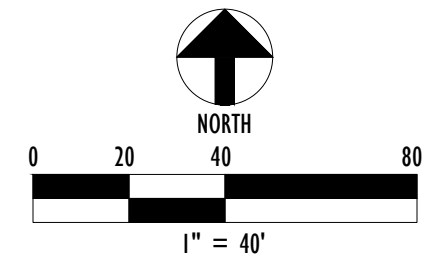
- HUNTER PGV-100G 1" REMOVE CONTROL VALVE WITH TUCOR DECODER, TO BE CONNECTED TO EXISTING TUCOR 2-WIRE IRRIGATION SYSTEM
- HUNTER MSBN-50Q MULTI-STREAM BUBBLER (0.5 GPM) ON HUNTER PROS-04-PRS30 BODY

IRRIGATION NOTES:

1. SYSTEM LAYOUT IS SCHEMATIC ONLY, ACTUAL LOCATION OF SYSTEM COMPONENTS TO BE FIELD APPROVED BY OWNER'S REPRESENTATIVE. SYSTEM IS DESIGNED TO PERMIT 100% HEAD TO HEAD COVERAGE. CONTRACTOR SHALL MAKE NECESSARY FIELD ADJUSTMENTS TO ENSURE PROPER COVERAGE.
2. CONTRACTOR SHALL BE LICENSED FOR STATE AND MUNICIPALITY WHERE APPLICABLE. CONTRACTOR SHALL OBTAIN AND PAY FOR ALL PERMITS AND COORDINATE APPROPRIATE INSPECTIONS.
3. ALL PIPE CONNECTIONS SHALL BE SOLVENT WELDED PER MANUFACTURER'S RECOMMENDATIONS.



Pipe Leg	Length	Flow	Pipe Size	Velocity	Friction Loss / 100	Friction Loss
1	16	0.5	3/4"	0.49	0.07	0.011
2	8	1	3/4"	0.49	0.07	0.006
3	8	1.5	3/4"	0.49	0.07	0.006
4	25	2	3/4"	0.99	0.24	0.060
5	7	2.5	3/4"	0.99	0.24	0.017
6	8	3	3/4"	1.48	0.52	0.042
7	25	3.5	3/4"	1.48	0.52	0.130
8	7	4	3/4"	1.97	0.88	0.062
9	7	4.5	3/4"	1.97	0.88	0.062
10	162	5	3/4"	2.46	1.33	2.155
11	94	8.5	3/4"	4.43	3.94	3.704
Pressure Required at RCV outlet						6.252
Pressure Required at connection to existing mainline						8.252



REVISIONS		DATE	DESCRIPTION



PROJECT #	PK1801	SHEET #
ISSUED DATE	02-09-23	L-17
DRAWN BY	MAW	
CHECKED BY	MAW	

