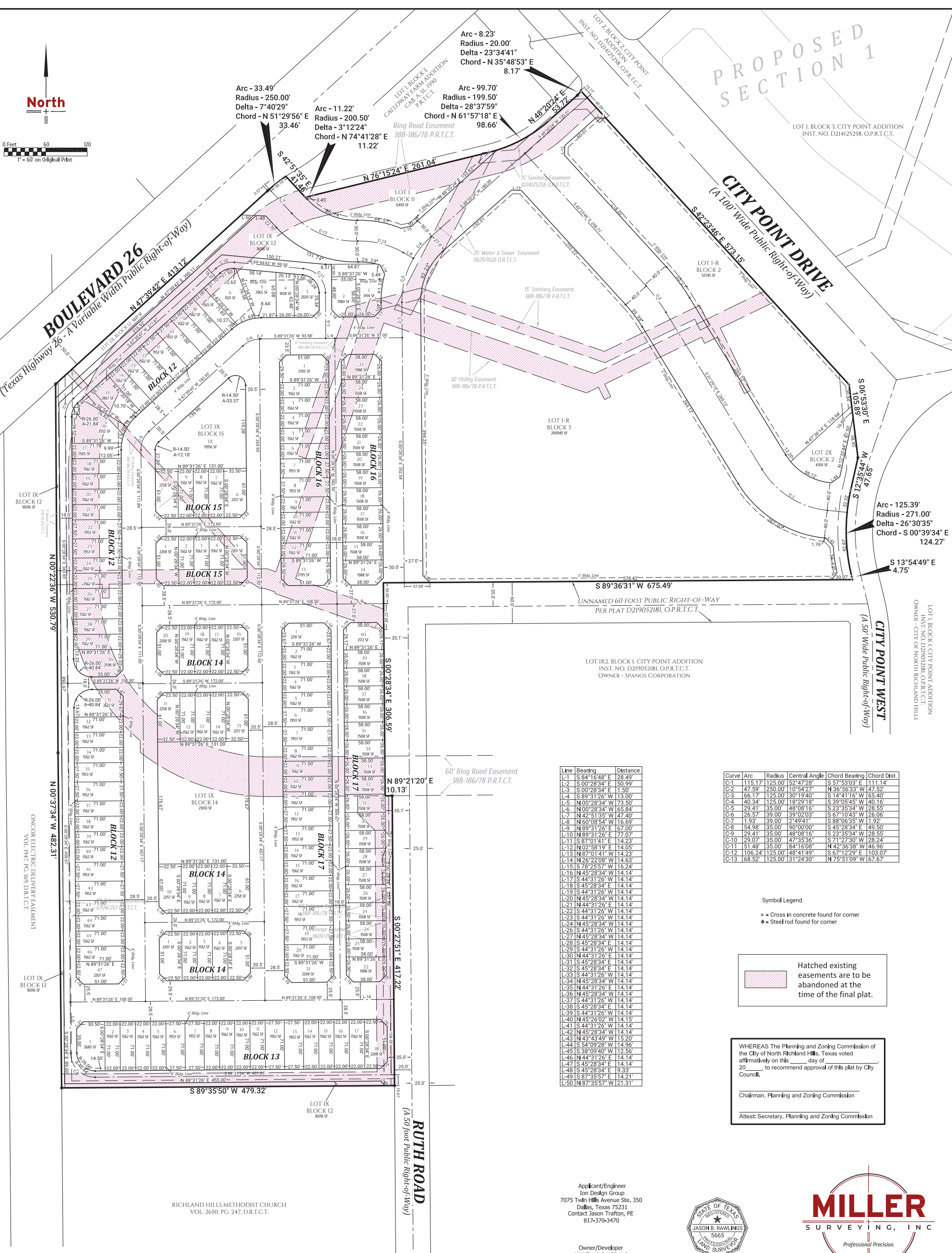
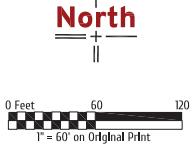


PROPOSED SECTION 1

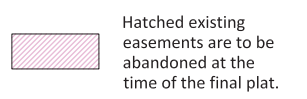


Line	Bearing	Distance
L-1	S 84°16'48" E	28.49'
L-2	S 00°28'34" E	50.99'
L-3	S 00°28'34" E	1.50'
L-4	S 89°31'26" W	13.00'
L-5	N 00°28'34" W	73.50'
L-6	N 00°28'34" W	65.84'
L-7	N 42°51'35" E	47.40'
L-8	N 60°08'54" W	16.69'
L-9	N 89°31'26" E	67.00'
L-10	N 89°31'26" E	77.07'
L-11	S 87°01'41" E	14.23'
L-12	N 02°58'19" E	14.05'
L-13	N 87°01'41" W	14.23'
L-14	N 26°22'08" W	14.63'
L-15	S 78°25'57" W	16.24'
L-16	N 45°28'34" W	14.14'
L-17	S 44°31'26" W	14.14'
L-18	S 45°28'34" E	14.14'
L-19	S 44°31'26" W	14.14'
L-20	S 45°28'34" W	14.14'
L-21	N 44°31'26" E	14.14'
L-22	S 44°31'26" W	14.14'
L-23	S 44°31'26" W	14.14'
L-24	S 45°28'34" W	14.14'
L-25	S 44°31'26" W	14.14'
L-26	S 45°28'34" W	14.14'
L-27	N 45°28'34" W	14.14'
L-28	S 45°28'34" E	14.14'
L-29	S 44°31'26" W	14.14'
L-30	N 44°31'26" E	14.14'
L-31	S 45°28'34" W	14.14'
L-32	S 45°28'34" W	14.14'
L-33	S 44°31'26" W	14.14'
L-34	N 45°28'34" W	14.14'
L-35	N 44°31'26" E	14.14'
L-36	N 45°28'34" W	14.14'
L-37	S 44°31'26" W	14.14'
L-38	S 45°28'34" E	14.14'
L-39	S 44°31'26" W	14.14'
L-40	N 45°26'02" W	14.15'
L-41	S 44°31'26" W	14.14'
L-42	N 45°28'34" W	14.14'
L-43	N 43°43'49" W	15.20'
L-44	S 54°09'28" W	14.96'
L-45	S 38°09'40" W	12.56'
L-46	N 44°31'26" E	14.14'
L-47	S 45°28'34" E	14.14'
L-48	S 45°28'34" E	9.33'
L-49	S 87°35'57" E	14.21'
L-50	N 87°35'57" W	21.31'

Curve	Arc	Radius	Central Angle	Chord Bearing	Chord Dist.
C-1	115.17'	125.00'	52°47'28"	S 57°53'03" E	111.14'
C-2	47.59'	250.00'	10°54'27"	S 36°56'33" W	47.52'
C-3	66.17'	125.00'	30°19'40"	S 14°41'16" W	65.40'
C-4	40.34'	125.00'	18°29'18"	S 39°05'45" W	40.16'
C-5	29.41'	35.00'	48°08'16"	S 23°35'34" W	28.55'
C-6	26.57'	39.00'	39°02'03"	S 67°10'43" W	26.06'
C-7	1.93'	39.00'	2°49'41"	S 88°06'35" W	1.92'
C-8	54.98'	35.00'	90°00'00"	S 45°28'34" E	49.50'
C-9	29.41'	35.00'	48°08'16"	S 23°35'34" W	28.55'
C-10	29.07'	35.00'	47°35'36"	S 71°27'30" W	28.24'
C-11	51.48'	35.00'	84°16'08"	N 42°36'38" W	46.96'
C-12	106.24'	125.00'	48°41'49"	S 67°12'29" E	103.07'
C-13	68.52'	125.00'	31°24'30"	N 75°51'09" W	67.67'

Symbol Legend

- × = Cross in concrete found for corner
- = Steel rod found for corner



WHEREAS The Planning and Zoning Commission of the City of North Richland Hills, Texas voted affirmatively on this _____ day of _____ 20____ to recommend approval of this plat by City Council.

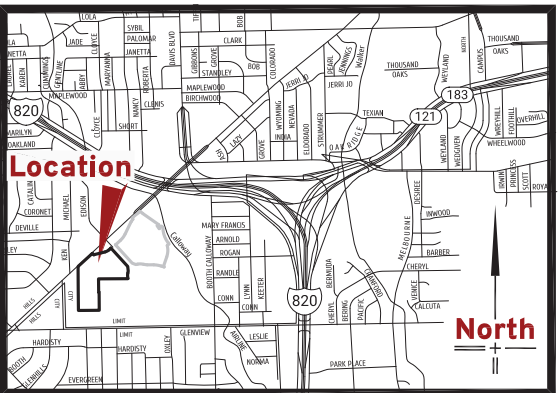
Chairman, Planning and Zoning Commission _____

Attest: Secretary, Planning and Zoning Commission _____



Applicant/Engineer
 Jon Design Group
 7075 Twin Hills Avenue Ste. 350
 Dallas, Texas 75231
 Contact Jason Traflet, PE
 817-370-3470

Owner/Developer
 MM City Point 53 LLC
 1800 Valley View Lane Ste. 300
 Farmers Branch, Texas



PRELIMINARY REPLAT
CITY POINT VILLAGE
 BLOCKS 2 AND 3, AND BLOCKS II THRU XVII

BEING 21.5520 ACRES OUT OF THE W. W. WALLACE SURVEY AND BEING A REVISION OF LOT IRI, BLOCK 2, CITY POINT ADDITION, AN ADDITION TO THE CITY OF NORTH RICHLAND HILLS, TARRANT COUNTY, TEXAS ACCORDING TO THE PLAT THEREOF RECORDED AS INSTRUMENT NO. D214125258 OF THE OFFICIAL PUBLIC RECORDS OF TARRANT COUNTY, TEXAS

NOVEMBER 2019

City Case No. _____