

EXHIBIT B



The play components located on this site are intended to be used by children 2-5 years of age and are designed to meet the requirements of ASTM F1487-15, the public safety standard, and meet the following requirements:

THIS PLAY AND PLAY EQUIPMENT IS DESIGNED FOR A MAXIMUM USE LIFE OF 15 YEARS UNLESS OTHERWISE NOTED ON PLAN.

IT IS THE MANUFACTURER'S OPINION THAT THE PLAY AND PLAY EQUIPMENT MEETS THE ADA ACCESSIBILITY STANDARDS, ASSUMING AN ACCESSIBLE ROUTING, SURFACE, AND PLAY COMPONENTS LOCATED WITHIN THE ENTIRE USE ZONE.

THIS COMPANY SHALL BE RESPONSIBLE TO THE USER FOR THE PROPER INSTALLATION, MAINTENANCE, AND REPAIRS. THE USER SHALL BE RESPONSIBLE FOR THE PROPER MAINTENANCE AND REPAIRS OF ALL PLAY COMPONENTS AND EQUIPMENT. THE USER SHALL BE RESPONSIBLE FOR THE PROPER MAINTENANCE AND REPAIRS OF ALL PLAY COMPONENTS AND EQUIPMENT. THE USER SHALL BE RESPONSIBLE FOR THE PROPER MAINTENANCE AND REPAIRS OF ALL PLAY COMPONENTS AND EQUIPMENT.

ONLY A LICENSED TRADESMAN IN ACCORDANCE WITH THE MANUFACTURER'S INSTRUCTIONS SHALL BE PERMITTED TO MAKE ANY MODIFICATIONS TO THE EQUIPMENT. THE USER SHALL BE RESPONSIBLE FOR THE PROPER MAINTENANCE AND REPAIRS OF ALL PLAY COMPONENTS AND EQUIPMENT. THE USER SHALL BE RESPONSIBLE FOR THE PROPER MAINTENANCE AND REPAIRS OF ALL PLAY COMPONENTS AND EQUIPMENT.

ACCESSIBLE/PROTECTIVE LOOSE-TALL MATERIAL (NUMBERED SHOWN) IS NOT RECOMMENDED.

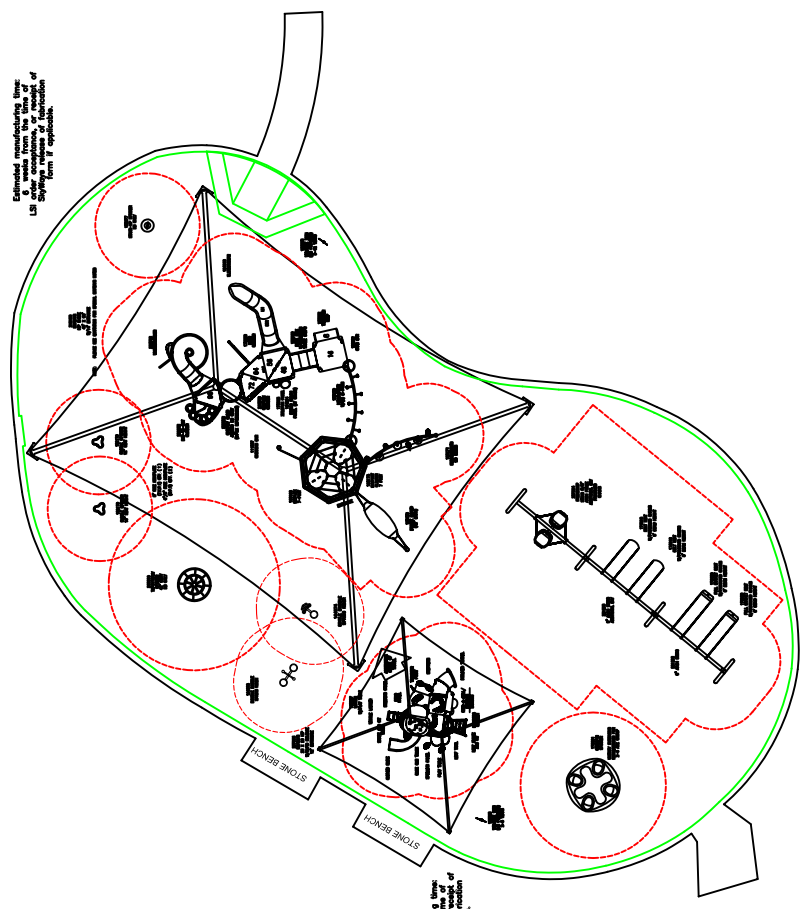
IT IS THE MANUFACTURER'S OPINION AND COMPANY'S POLICY THAT THESE COMPONENTS CONFORM WITH THE U.S. CONSUMER PRODUCT SAFETY COMMISSION (CPSC) "HANDBOOK FOR PUBLIC PLAYGROUND SAFETY."

DESIGNED BY:
JCF

DATE: 3/7/18
COMPANY: LANDSCAPE STRUCTURES, INC.
ADDRESS: 111070-1-1
PHONE: 408-252-1000 FAX: 408-252-1001

2/15/18	111070-1-2	NAH
1/29/18	111070-1-1	NAH
Date	Previous Drawing #	Notes

Estimated manufacturing time is 6 weeks from the date of order. Lead time for shipping is 4 weeks. Lead time for installation is 2 weeks. Lead time for site preparation is 2 weeks. Lead time for site preparation is 2 weeks.



Estimated manufacturing time is 6 weeks from the date of order. Lead time for shipping is 4 weeks. Lead time for installation is 2 weeks. Lead time for site preparation is 2 weeks.

Smart Play® (2-5 years)
Max Fall Height: 96 inches

PlayBooster® (5-12 years)
Max Fall Height: 96 inches

TOTAL ELEVATED PLAY COMPONENTS	10	0	REQUIRED	0
TOTAL ELEVATED COMPONENTS ACCESSIBLE BY RAMP	0	0	REQUIRED	0
TOTAL ELEVATED COMPONENTS ACCESSIBLE BY TRANSFER	10	0	REQUIRED	5
TOTAL ACCESSIBLE GROUND LEVEL COMPONENTS SHOWN	10	10	REQUIRED	3
TOTAL DIFFERENT TYPES OF GROUND LEVEL COMPONENTS	6	6	REQUIRED	6

TOTAL ELEVATED PLAY COMPONENTS	8	0	REQUIRED	0
TOTAL ELEVATED COMPONENTS ACCESSIBLE BY RAMP	0	0	REQUIRED	0
TOTAL ELEVATED COMPONENTS ACCESSIBLE BY TRANSFER	6	0	REQUIRED	4
TOTAL ACCESSIBLE GROUND LEVEL COMPONENTS SHOWN	10	10	REQUIRED	3
TOTAL DIFFERENT TYPES OF GROUND LEVEL COMPONENTS	6	6	REQUIRED	6



Norich Park Playground
North Richland Hills, TX

Whirlix Design, LLC
Steve Main

SYSTEM TYPE:
PlayBooster/Smart Play
DRAWING #: 1125507-01-01

