

- KEYNOTES
- 1. SMOOTH FACE CONCRETE BLOCK -BEST BLOCK #685
  - 2. EIFS - INTEGRAL COLOR TO MATCH SHERWIN WILLIAMS #2835 CRAFTSMAN BROWN
  - 3. EIFS - INTEGRAL COLOR TO MATCH SHERWIN WILLIAMS #2834 BIRDSEYE MAPLE
  - 4. EIFS - INTEGRAL COLOR TO MATCH SHERWIN WILLIAMS #6105 DIVINE WHITE
  - 5. MTL. MAN DOOR. PAINT TO MATCH MASONRY
  - 6. ALUMINUM/GLASS STOREFRONT CLEAR ANODIZED ALUMINUM
  - 7. ALUMINUM SECTIONAL OVERHEAD DOORS CLEAR ANODIZED ALUMINUM
  - 8. INTERNALLY-ILLUMINATED "BRAKES PLUS" SIGNAGE
  - 9. PRE-FINISHED METAL CAP FLASHING PREFINISHED TO MATCH FINISH #4
  - 10. DOWNSPOUT AND OVERFLOW SCUPPER - PAINT TO MATCH ADJACENT MATERIAL
  - 11. DECORATIVE LIGHT FIXTURE.
  - 12. KEY DROP BOX
  - 13. 1 1/2" X 3/4" EIFS REVEAL
  - 14. NOT USED.
  - 15. FAUX STONE - WHITE OAK COUNTRY LEDGESTONE CV-20046
  - 16. MECH. GRILLE - PAINT TO MATCH BLOCK
  - 17. METAL ANNING - BERRIDGE "ZINC-COTE"

DATE	REVISIONS	NAME

AUTHORIZATION	
CLIENT	DATE
ACCOUNT EXECUTIVE	DATE
LANDLORD	DATE
ALL CHANGES MUST BE INITIALED BY CLIENT AND ACCOUNT EXECUTIVE ON FINAL APPROVED PRINT.	

This drawing is the exclusive property of Accent Graphics, Inc. and is the result of the original work of its employees. The plans are provided to your company for the sole purpose of considering the purchase of a sign manufactured by Accent Graphics, Inc. based on these plans. OR the purchase of the plans and design concepts contained therein for manufacture elsewhere. Distribution or exhibition of the plans to anyone outside of your company or the use of the plans by others to manufacture or design a similar sign as displayed in the plans is expressly forbidden. In the event that such exhibition occurs, Accent Graphics will expect payment of a minimum \$2000 design fee in recompense for the time and effort entailed to produce the plans.

CLIENT BRAKES PLUS STORE #       

INSTALLATION ADDRESS NORTH RICHLAND HILLS, TX

DESIGNER KD ACCOUNT EXECUTIVE NT

DATE 2-27-2020 SHEET 7 OF 7 DESIGN # 20-185 REV-1

Gerber FILE = P:\1-2020-Jobs\B\Brakes Plus\N Richland Hills\Production\JOBS  
Corel FILE = P:\1-2020-Jobs\B\Brakes Plus\N Richland Hills\Drawings

**accent****graphics**

COMPLETE **SIGN** SERVICE & FABRICATION

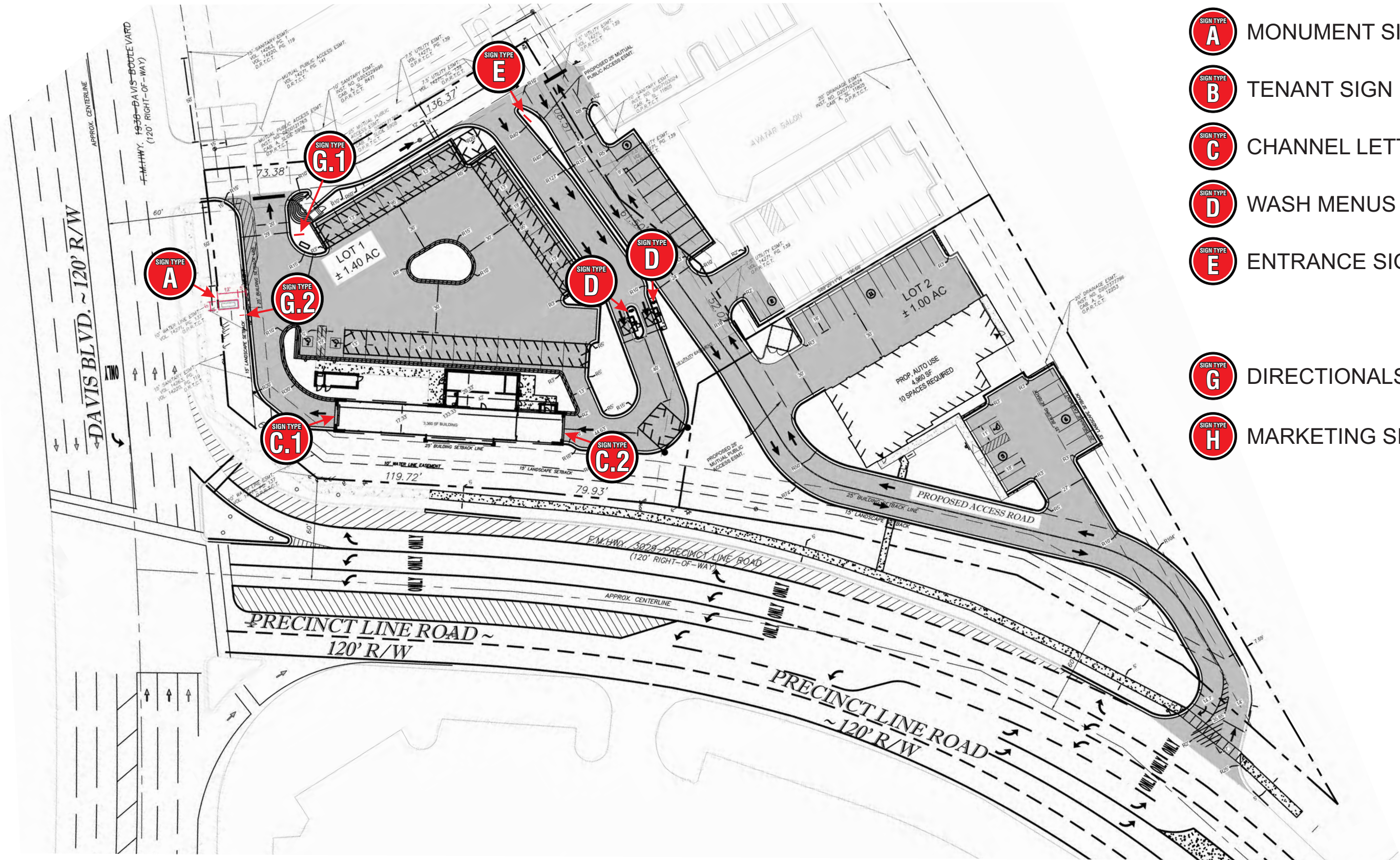
523 E. ROCK ISLAND  
GRAND PRAIRIE, TX 75050

TOLL FREE (800) 810-3044  
METRO (972) 399-0333  
FAX (972) 986-4456  
FAX (800) 810-3045

EMAIL  
WEBSITE

www.accentgraphicsinc.com





MONUMENT SIGN



TENANT SIGN (SHARED)



CHANNEL LETTERS



WASH MENUS



ENTRANCE SIGN



DIRECTIONALS



MARKETING SIGNS



5198 NORTH LAKE DRIVE  
LAKE CITY, GA 30260  
404-361-3800  
FAX 404-361-7038  
WWW.CLAYTONSIGNS.COM

DATE - 04/2/2020  
SIGN TYPE  
EXTERIOR SIGN PACKAGE

CLIENT  
TIDAL WAVE  
8616 DAVIS BLVD  
NORTH RICHLAND HILLS, TX 75028

REVISIONS:  
REVISION # - DATE

DESIGNER Ryan McAllister  
ACCOUNT REP. NAME

SCALE: AS INDICATED  
DRAWING FILE NAME  
O:\BM\TIDAL WAVE\NORTH RICHLAND HILLS\  
TIDAL WAVE NORTH RICHLAND HILLS -  
04\_20.CDR

DRAWING  
STATUS:



THIS DRAWING IS AN ORIGINAL, UNPUBLISHED  
DESIGN CREATED BY CLAYTON SIGNS, INC. IT IS  
NOT TO BE REPRODUCED, CHANGED, OR  
EXHIBITED TO ANYONE OUTSIDE OF YOUR  
COMPANY IN WHOLE OR IN PART WITHOUT  
WRITTEN PERMISSION FROM THE OWNER OF  
CLAYTON SIGNS, INC. ANY SUCH ACTIONS MAY BE  
SUBJECT TO LEGAL ACTION IN A COURT OF LAW.  
©2019 ALL RIGHTS RESERVED

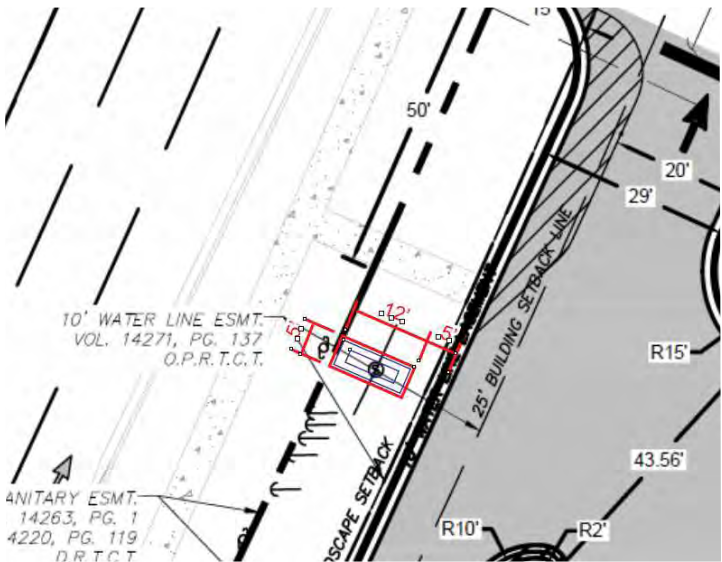
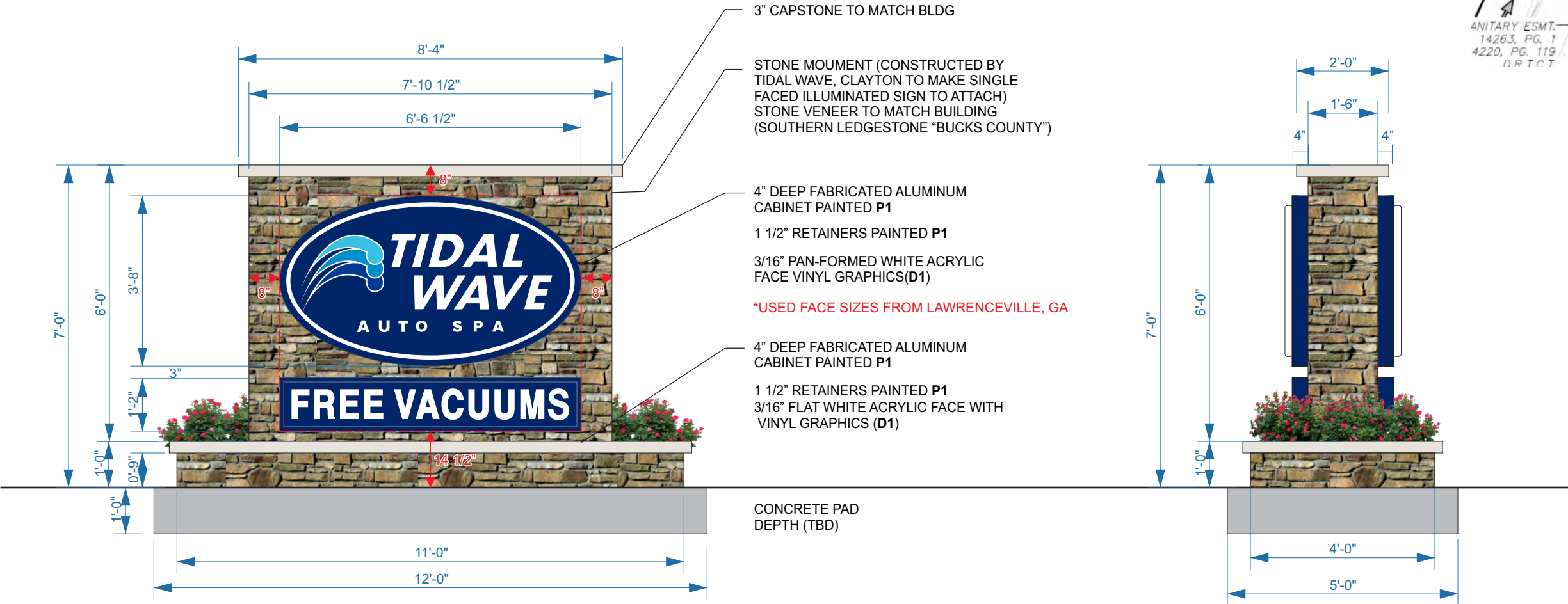
PAGE  
1



SIGN TYPE A: ENTRANCE MONUMENT  
DOUBLE-SIDED, INTERNALLY ILLUMINATED  
QTY: 1



SIGN MESSAGE AREA = 33.25 SQ. FT.  
SIGN STRUCTURE AREA = 65 SQ. FT.  
8" MASONRY BORDER AROUND COPY



- P1** PAINT - MATCH PANTONE 281 C (GLOSS FINISH)
- P2** PAINT - WHITE (GLOSS FINISH)

- D1** DIGITAL PRINT ON TRANSLUCENT VINYL
- MATCH PANTONE 2985 C
- MATCH PANTONE 287 C
- MATCH PANTONE 368 C
- MATCH PANTONE PROCESS BLUE



5198 NORTH LAKE DRIVE  
LAKE CITY, GA 30260  
404-361-3800  
FAX 404-361-7038  
WWW.CLAYTONSIGNS.COM

DATE - 04/ 2/ 2020  
SIGN TYPE  
EXTERIOR SIGN PACKAGE

CLIENT  
TIDAL WAVE  
8616 DAVIS BLVD  
NORTH RICHLAND HILLS, TX 75028

REVISIONS:  
REVISION # - DATE

DESIGNER Ryan McAllister  
ACCOUNT REP. NAME

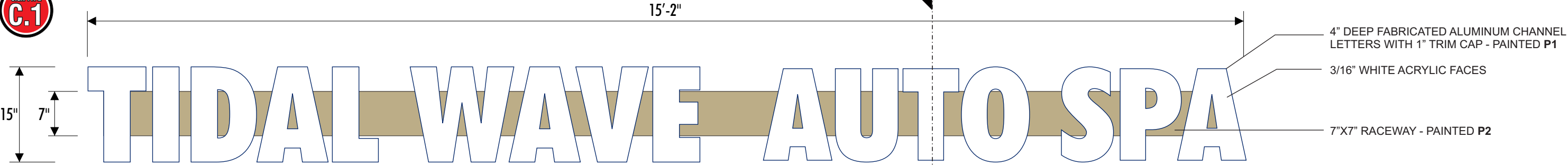
SCALE: AS INDICATED  
DRAWING FILE NAME  
O:\ BM\ TIDAL WAVE \ NORTH RICHLAND HILLS \  
TIDAL WAVE NORTH RICHLAND HILLS -  
04\_2\_20.CDR

DRAWING  
STATUS:

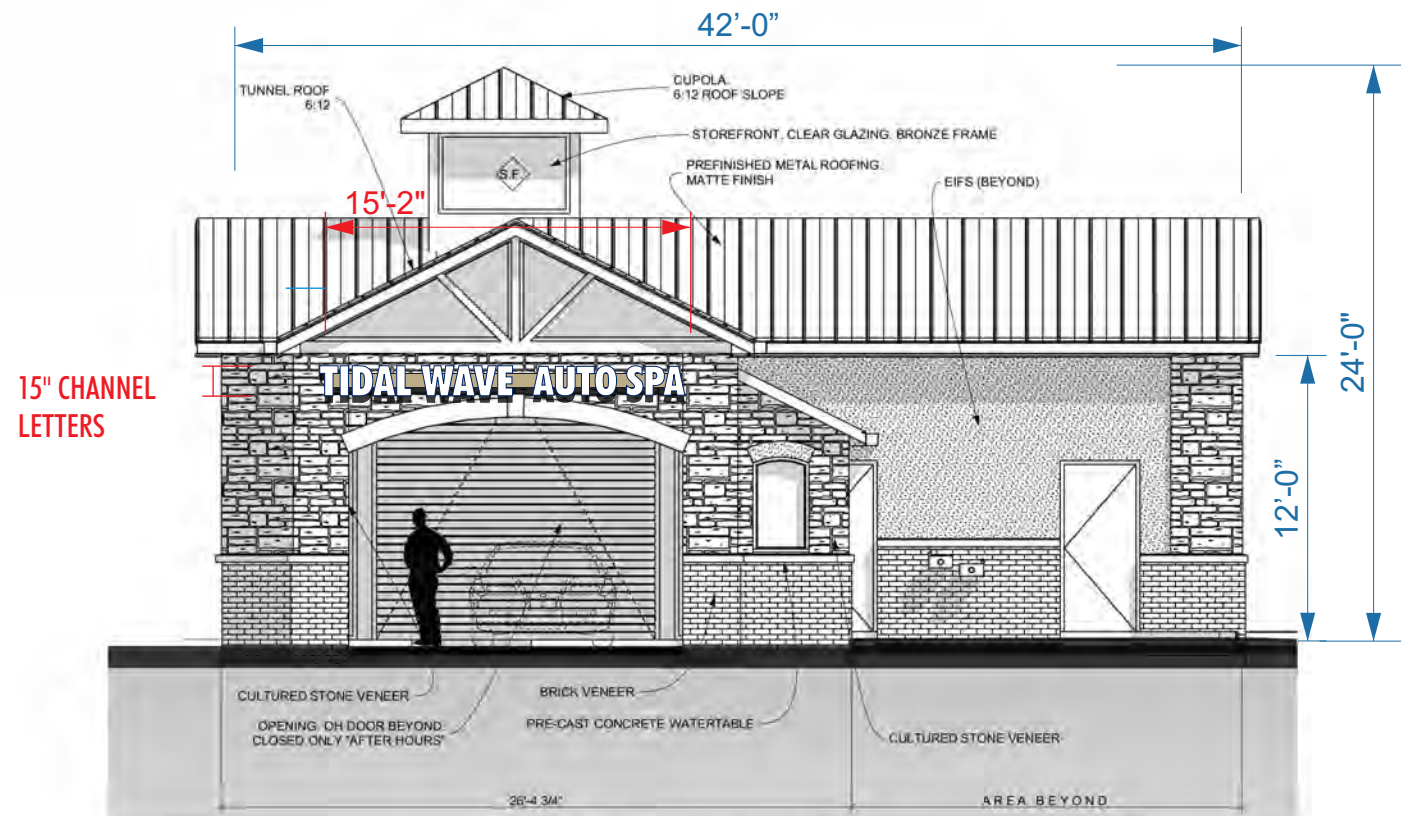


THIS DRAWING IS AN ORIGINAL, UNPUBLISHED  
DESIGN CREATED BY CLAYTON SIGNS, INC. IT IS  
NOT TO BE REPRODUCED, CHANGED, OR  
EXHIBITED TO ANYONE OUTSIDE OF YOUR  
COMPANY IN WHOLE OR IN PART WITHOUT  
WRITTEN PERMISSION FROM THE OWNER OF  
CLAYTON SIGNS, INC. ANY SUCH ACTIONS MAY BE  
SUBJECT TO LEGAL ACTION IN A COURT OF LAW.  
© 2019 ALL RIGHTS RESERVED

SIGN TYPE C: FACE-LIT CHANNEL LETTERS  
QTY: 1 SET FOR TUNNEL EXIT- **19.01 SQ. FT.**

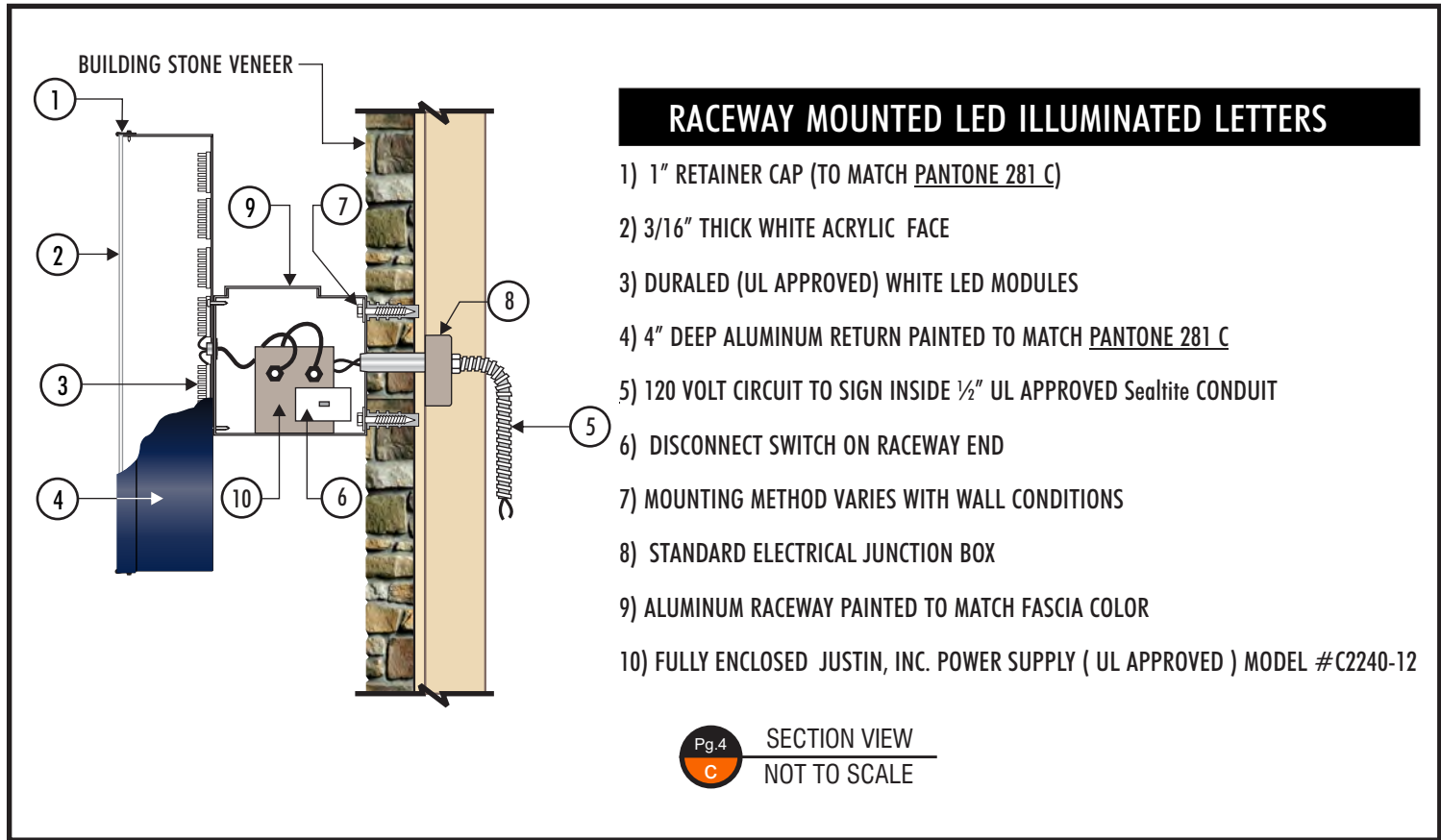


Pg.4  
a FRONT VIEW  
Scale: 3/4"=1'


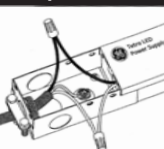


3 RIGHT ELEVATION  
SCALE: 1/4" = 1'-0"

- P1** PAINT - MATCH PANTONE 281 C (GLOSS FINISH)  
**P2** PAINT - MATCH BUILDING FACADE (GLOSS FINISH)



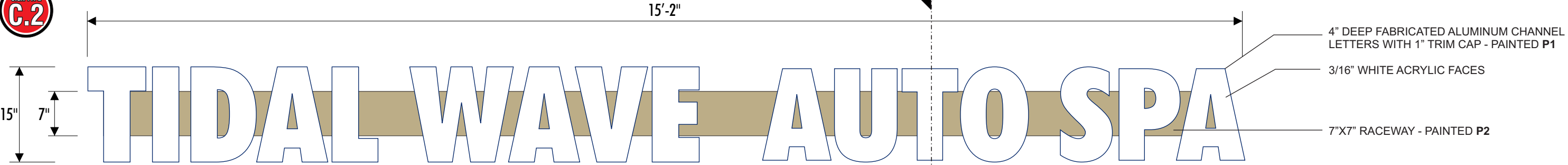
Pg.4  
c SECTION VIEW  
NOT TO SCALE

CHANNEL LETTERS (WHITE ILLUMINATION) WET LOCATION			
 <b>UL LISTED</b>	LED's JTSL065W-0.5 WHITE LED POWER SUPPLY BL-120-12-60 POWER SUPPLY		CONNECT THE AC LINE TO THE BLACK (LINE) AND WHITE (NEUTRAL) INPUT WIRES OF THE POWER SUPPLY USING 18-14 AWG TWIST ON WIRE CONNECTORS. GROUND POWER SUPPLY GREEN WIRE TO GROUNDING SCREW. REPLACE JUNCTION BOX COVER.
THIS SIGN IS INTENDED TO BE INSTALLED IN ACCORDANCE WITH REQUIREMENTS OF ARTICLE 600 OF THE NATIONAL ELECTRICAL CODE AND/OR APPLICABLE LOCAL CODES. THIS INCLUDES PROPER GROUNDING & BONDING OF THE SIGN.			

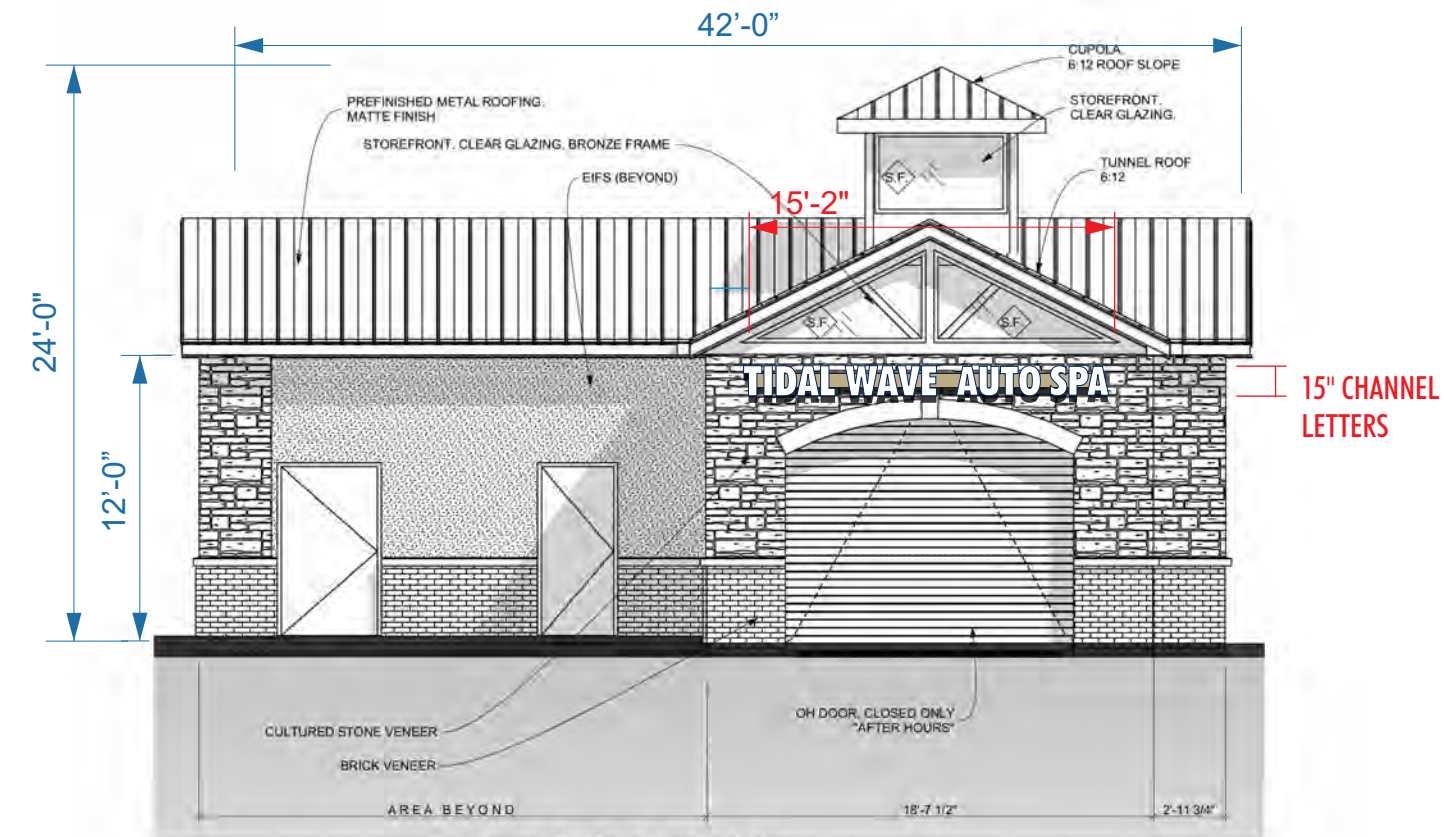




SIGN TYPE C: FACE-LIT CHANNEL LETTERS  
QTY: 1 SET FOR TUNNEL ENTRANCE- 19.01 SQ. FT.

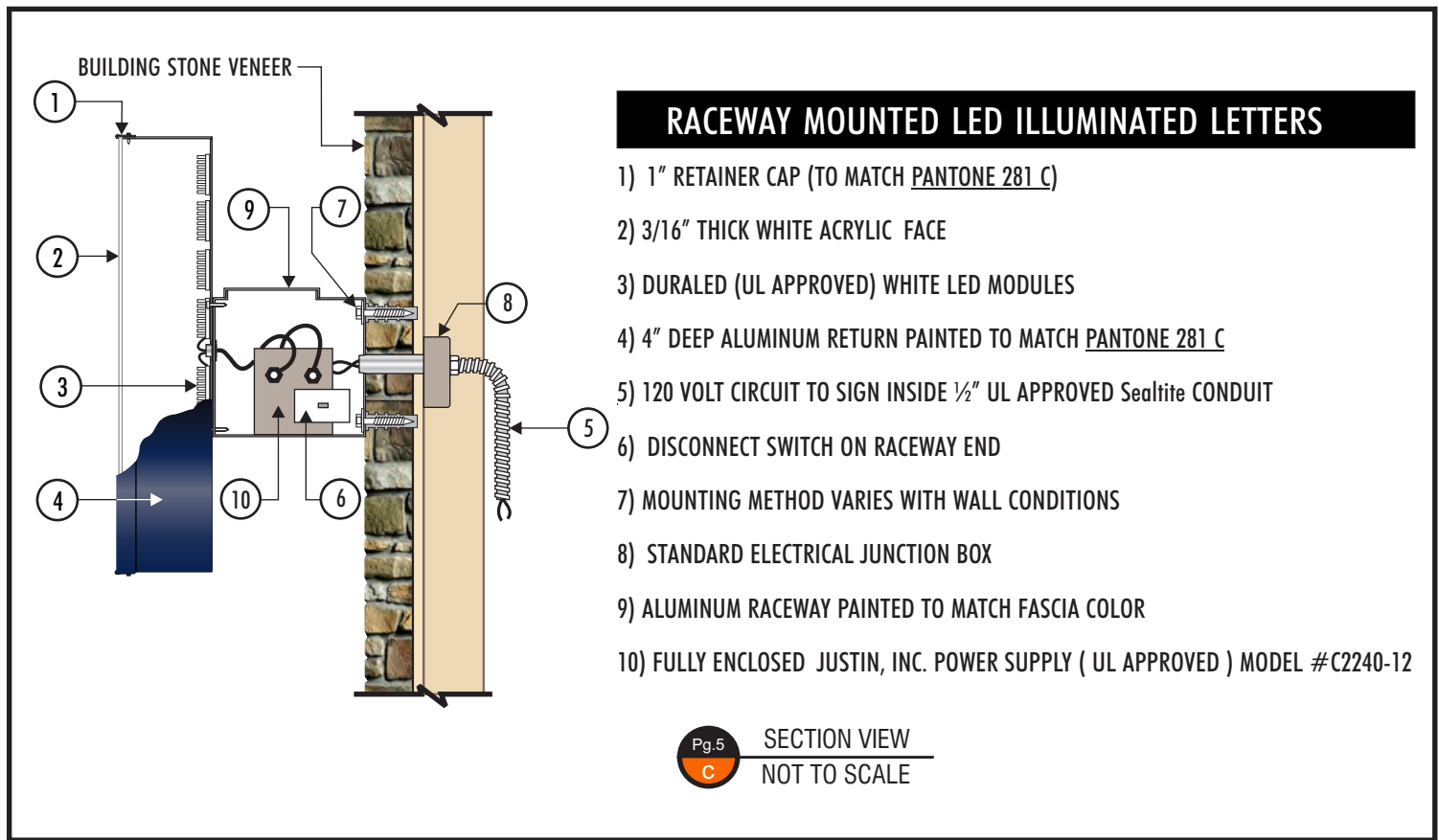


Pg.5  
a FRONT VIEW  
Scale: 3/4"=1'



4 LEFT ELEVATION  
SCALE: 1/4" = 1'-0"

- P1 PAINT - MATCH PANTONE 281 C (GLOSS FINISH)  
P2 PAINT - MATCH BUILDING FACADE (GLOSS FINISH)



CHANNEL LETTERS (WHITE ILLUMINATION) WET LOCATION			
	LED's JTSL065W-0.5 WHITE LED POWER SUPPLY BL-120-12-60 POWER SUPPLY		CONNECT THE AC LINE TO THE BLACK (LINE) AND WHITE (NEUTRAL) INPUT WIRES OF THE POWER SUPPLY USING 18-14 AWG TWIST ON WIRE CONNECTORS. GROUND POWER SUPPLY GREEN WIRE TO GROUNDING SCREW. REPLACE JUNCTION BOX COVER.
THIS SIGN IS INTENDED TO BE INSTALLED IN ACCORDANCE WITH REQUIREMENTS OF ARTICLE 600 OF THE NATIONAL ELECTRICAL CODE AND/OR APPLICABLE LOCAL CODES. THIS INCLUDES PROPER GROUNDING & BONDING OF THE SIGN.			



5198 NORTH LAKE DRIVE  
LAKE CITY, GA 30260  
404-361-3800  
FAX 404-361-7038  
WWW.CLAYTONSIGNS.COM

DATE - 04/ 2/ 2020  
SIGN TYPE  
EXTERIOR SIGN PACKAGE

CLIENT  
TIDAL WAVE  
8616 DAVIS BLVD  
NORTH RICHLAND HILLS, TX 75028

REVISIONS:  
REVISION # - DATE

DESIGNER Ryan McAllister  
ACCOUNT REP. NAME

SCALE: AS INDICATED  
DRAWING FILE NAME  
O:\ BM\ TIDAL WAVE\ NORTH RICHLAND HILLS\  
TIDAL WAVE NORTH RICHLAND HILLS -  
04\_2\_20.CDR

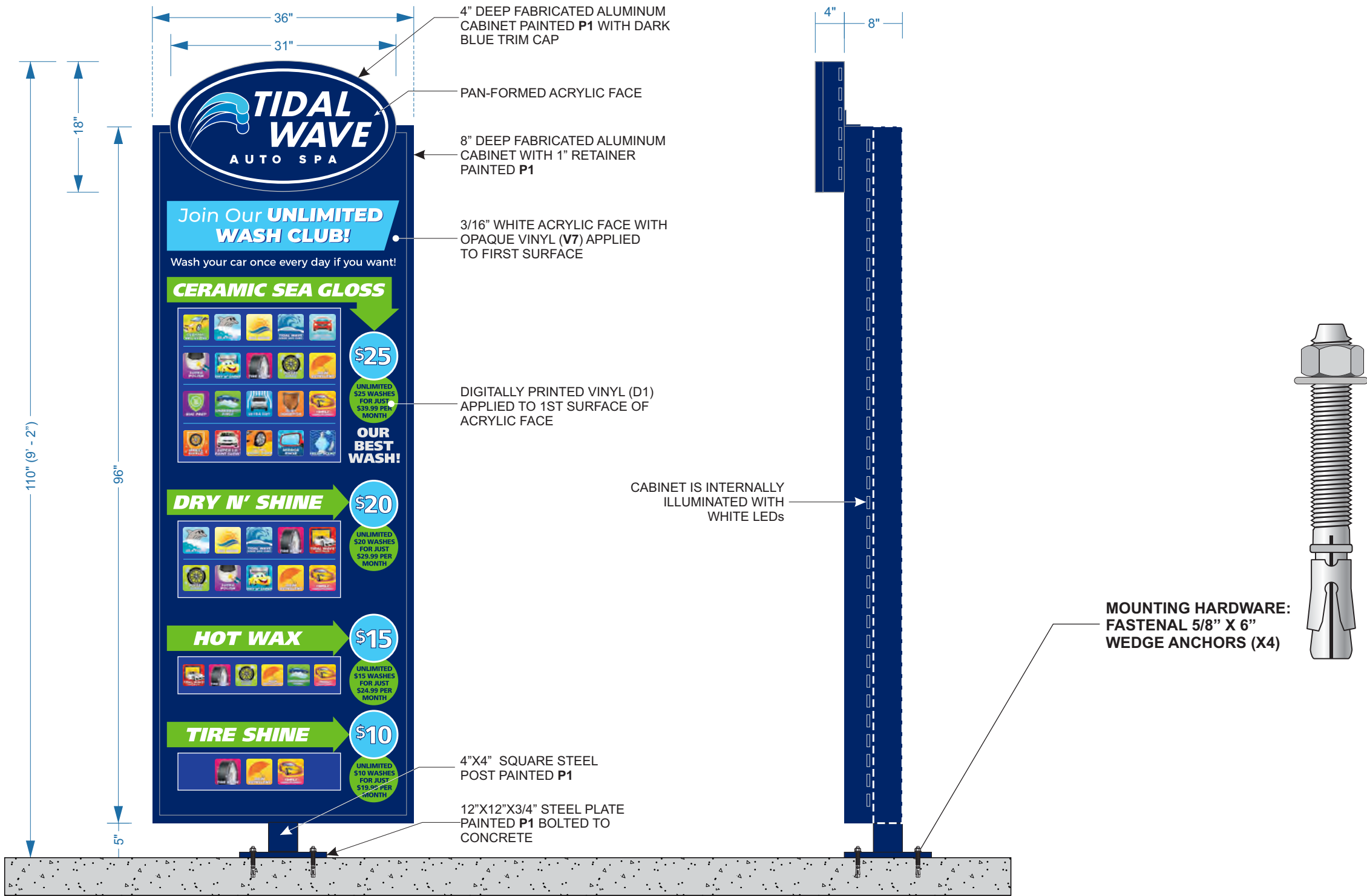
DRAWING  
STATUS:



THIS DRAWING IS AN ORIGINAL, UNPUBLISHED DESIGN CREATED BY CLAYTON SIGNS, INC. IT IS NOT TO BE REPRODUCED, CHANGED, OR EXHIBITED TO ANYONE OUTSIDE OF YOUR COMPANY IN WHOLE OR IN PART WITHOUT WRITTEN PERMISSION FROM THE OWNER OF CLAYTON SIGNS, INC. ANY SUCH ACTIONS MAY BE SUBJECT TO LEGAL ACTION IN A COURT OF LAW.  
©2019 ALL RIGHTS RESERVED



SIGN TYPE D: MENUS  
SINGLE-SIDED, INTERNALLY ILLUMINATED  
QTY: 2



P1 PAINT - MATCH PANTONE 281C

D1 DIGITALLY PRINTED TRANSLUCENT VINYL  
MATCH PANTONE 281C  
MATCH PANTONE 2985C  
MATCH PANTONE PROCESS BLUE  
MATCH PANTONE 368C

**DOUBLE FACED CABINET**  
LEDs  
GEWHDSR6-71K-DOUBLE SIDED  
POWER SUPPLY  
GEPS24-24V POWER SUPPLY  
CUL LISTED

**WET LOCATION**  
CONNECT THE AC LINE TO THE BLACK (LINE) AND WHITE (NEUTRAL) INPUT WIRES OF THE POWER SUPPLY USING 18-14 AWG TWIST ON WIRE CONNECTORS. GROUND POWER SUPPLY GREEN WIRE TO GROUNDING SCREW. REPLACE JUNCTION BOX COVER.

THIS SIGN IS INTENDED TO BE INSTALLED IN ACCORDANCE WITH REQUIREMENTS OF ARTICLE 600 OF THE NATIONAL ELECTRICAL CODE AND/OR APPLICABLE LOCAL CODES. THIS INCLUDES PROPER GROUNDING & BONDING OF THE SIGN.

V7 OPAQUE VINYL - MATCH PANTONE 281C

Pg.6  
a FRONT ELEVATION  
Scale: 3/4"=1'

Pg.6  
b SIDE PROFILE  
Scale: 3/4"=1'



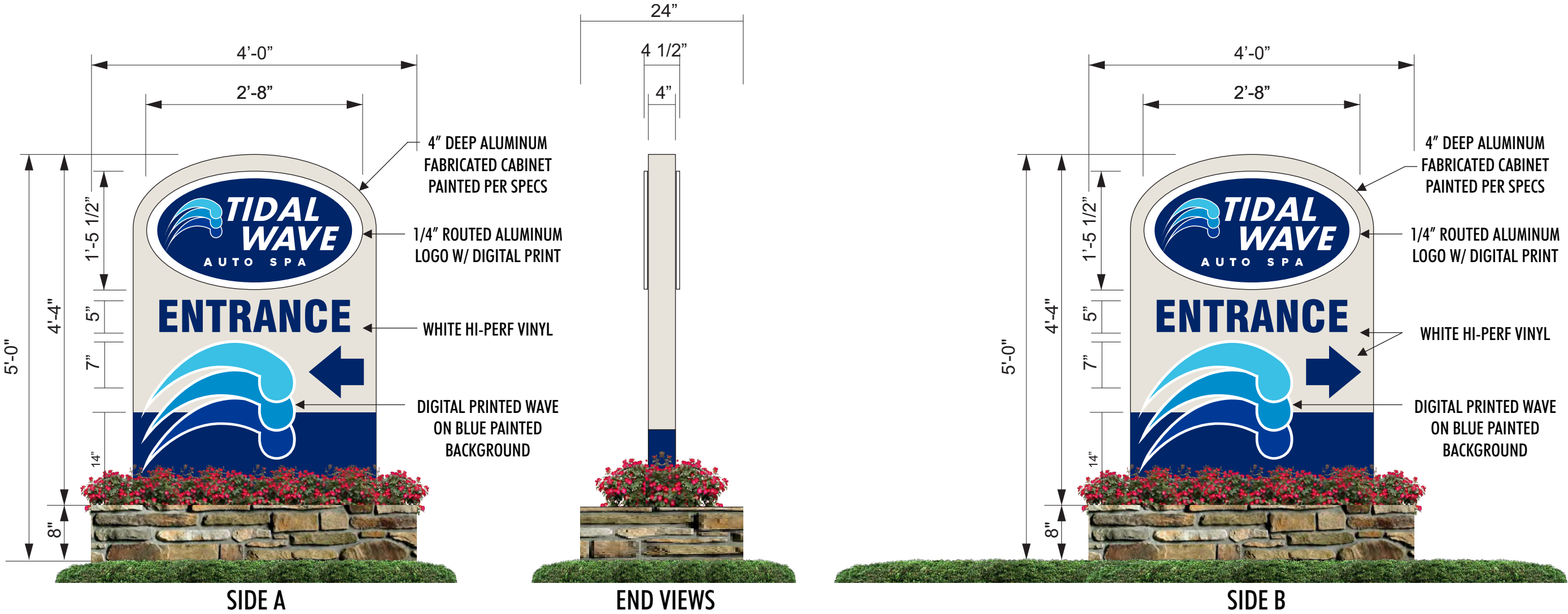
SIGN TYPE E: NON-ILLUMINATED ENTRANCE SIGN  
QTY: 1



PAINT COLOR FOR SIGN CABINET

TO MATCH PANTONE 281 C, GLOSS FINISH

TO MATCH PANTONE COOL GRAY 1C, GLOSS FINISH



- D1 DIGITAL PRINT ON TRANSLUCENT VINYL
- MATCH PANTONE 2985 C
  - MATCH PANTONE 287 C
  - MATCH PANTONE 368 C
  - MATCH PANTONE PROCESS BLUE



5198 NORTH LAKE DRIVE  
LAKE CITY, GA 30260  
404-361-3800  
FAX 404-361-7038  
WWW.CLAYTONSIGNS.COM

DATE - 04/ 2/ 2020  
SIGN TYPE  
EXTERIOR SIGN PACKAGE

CLIENT  
TIDAL WAVE  
8616 DAVIS BLVD  
NORTH RICHLAND HILLS, TX 75028

REVISIONS:  
REVISION # - DATE

DESIGNER Ryan McAllister  
ACCOUNT REP. NAME

SCALE: AS INDICATED  
DRAWING FILE NAME  
O:\BM\ TIDAL WAVE \ NORTH RICHLAND HILLS \  
TIDAL WAVE NORTH RICHLAND HILLS -  
04\_2\_20.CDR

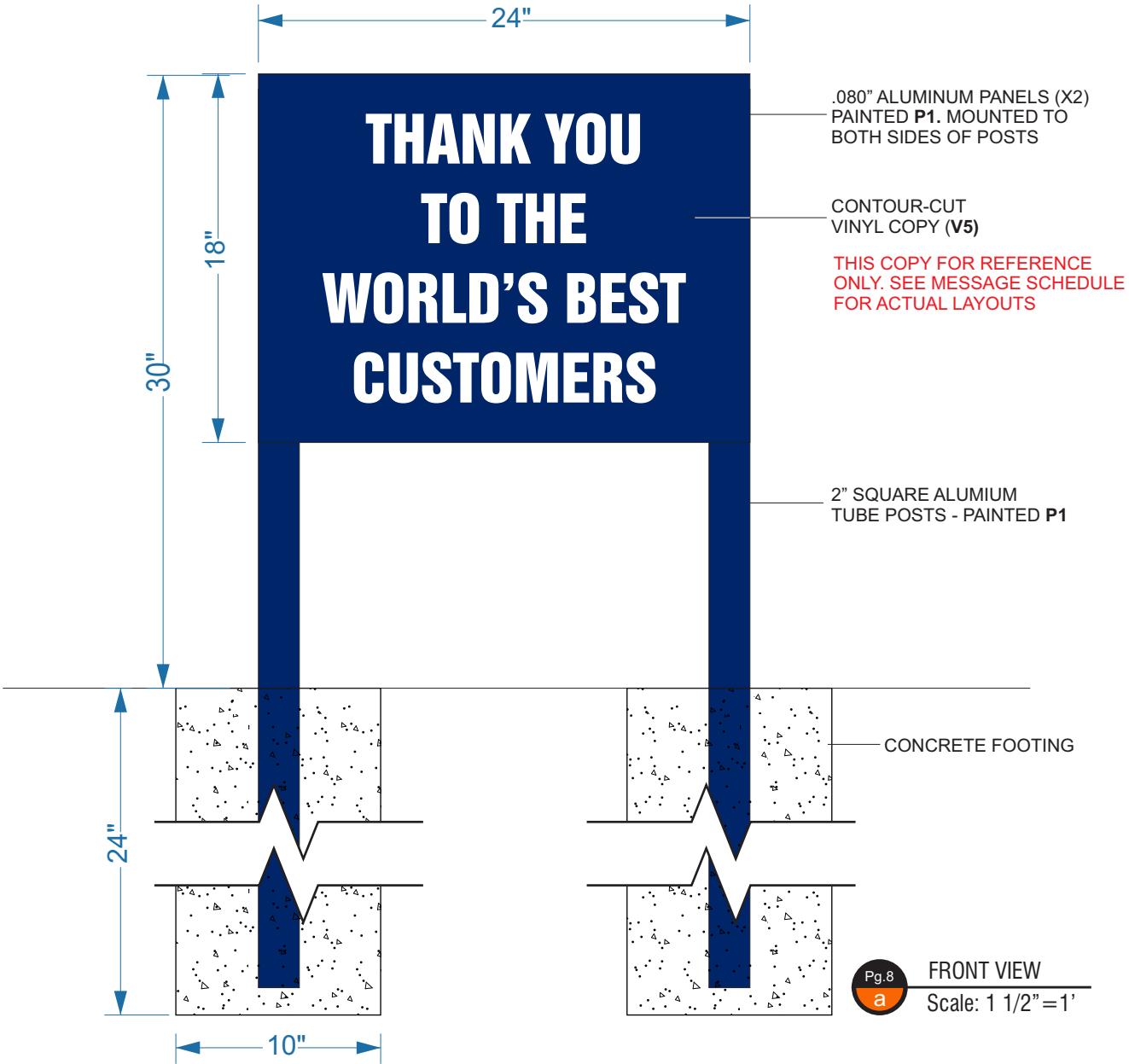
DRAWING  
STATUS:



THIS DRAWING IS AN ORIGINAL, UNPUBLISHED  
DESIGN CREATED BY CLAYTON SIGNS, INC. IT IS  
NOT TO BE REPRODUCED, CHANGED, OR  
EXHIBITED TO ANYONE OUTSIDE OF YOUR  
COMPANY IN WHOLE OR IN PART WITHOUT  
WRITTEN PERMISSION FROM THE OWNER OF  
CLAYTON SIGNS, INC. ANY SUCH ACTIONS MAY BE  
SUBJECT TO LEGAL ACTION IN A COURT OF LAW.  
© 2019 ALL RIGHTS RESERVED



SIGN TYPE G: DIRECTIONAL SIGNS  
DOUBLE-SIDED (SEE MESSAGE SCHED.)  
QTY: 2



P1 PAINT - MATCH PANTONE 281C

V1 VINYL - AVERY 700-101-0 WHITE



5198 NORTH LAKE DRIVE  
LAKE CITY, GA 30260  
404-361-3800  
FAX 404-361-7038  
WWW.CLAYTONSIGNS.COM

DATE - 04/ 2/ 2020  
SIGN TYPE  
EXTERIOR SIGN PACKAGE

CLIENT  
TIDAL WAVE  
8616 DAVIS BLVD  
NORTH RICHLAND HILLS, TX 75028

REVISIONS:  
REVISION # - DATE

DESIGNER Ryan McAllister  
ACCOUNT REP. NAME

SCALE: AS INDICATED  
DRAWING FILE NAME  
O:\BM\TIDAL WAVE\NORTH RICHLAND HILLS\  
TIDAL WAVE NORTH RICHLAND HILLS -  
04\_2\_20.CDR

DRAWING  
STATUS:



THIS DRAWING IS AN ORIGINAL, UNPUBLISHED  
DESIGN CREATED BY CLAYTON SIGNS, INC. IT IS  
NOT TO BE REPRODUCED, CHANGED, OR  
EXHIBITED TO ANYONE OUTSIDE OF YOUR  
COMPANY IN WHOLE OR IN PART WITHOUT  
WRITTEN PERMISSION FROM THE OWNER OF  
CLAYTON SIGNS, INC. ANY SUCH ACTIONS MAY BE  
SUBJECT TO LEGAL ACTION IN A COURT OF LAW.  
© 2019 ALL RIGHTS RESERVED



SIGN TYPE H: MARKETING SIGNS / DIGITAL PRINT ON 3/8" FLUTED PLASTIC ON SPRING FRAME  
QTY: 1 EACH



QTY. 1



Double Sided

QTY. 1



Double Sided

QTY. 1



Double Sided

QTY. 1



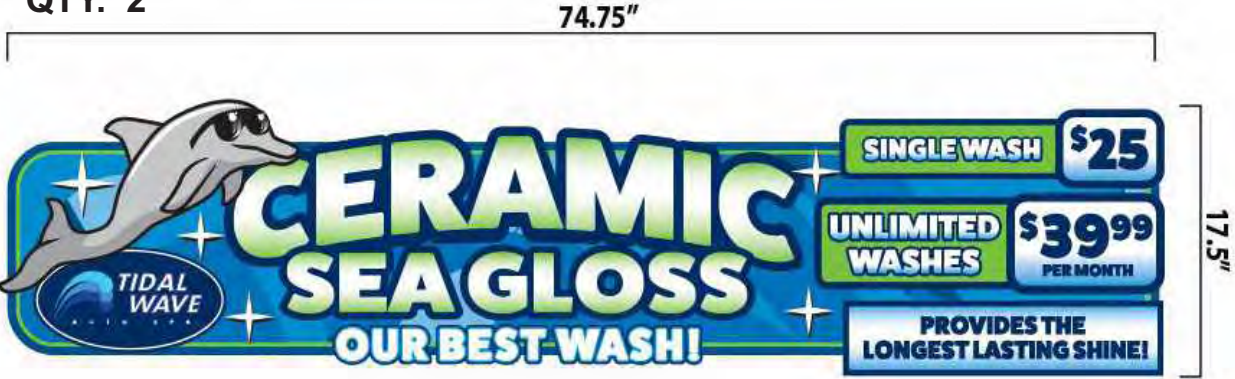
Double Sided

QTY. 1



\*Black Outline Represents Finished Sign in Frame

QTY. 2



GATE ARM SIGN



5198 NORTH LAKE DRIVE  
LAKE CITY, GA 30260  
404-361-3800  
FAX 404-361-7038  
WWW.CLAYTONSIGNS.COM

DATE - 04/2/2020  
SIGN TYPE  
EXTERIOR SIGN PACKAGE

CLIENT  
TIDAL WAVE  
8616 DAVIS BLVD  
NORTH RICHLAND HILLS, TX 75028

REVISIONS:  
REVISION # - DATE

DESIGNER Ryan McAllister  
ACCOUNT REP. NAME

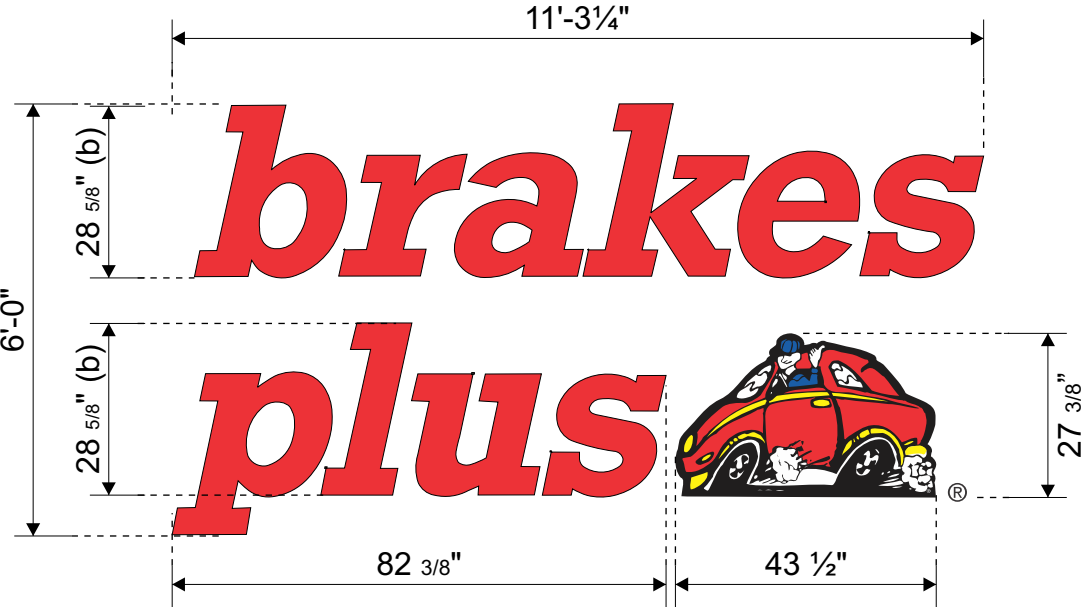
SCALE: AS INDICATED  
DRAWING FILE NAME  
O:\BM\TIDAL WAVE\NORTH RICHLAND HILLS\  
TIDAL WAVE NORTH RICHLAND HILLS -  
04\_2\_20.CDR

DRAWING  
STATUS:



THIS DRAWING IS AN ORIGINAL, UNPUBLISHED  
DESIGN CREATED BY CLAYTON SIGNS, INC. IT IS  
NOT TO BE REPRODUCED, CHANGED, OR  
EXHIBITED TO ANYONE OUTSIDE OF YOUR  
COMPANY IN WHOLE OR IN PART WITHOUT  
WRITTEN PERMISSION FROM THE OWNER OF  
CLAYTON SIGNS, INC. ANY SUCH ACTIONS MAY BE  
SUBJECT TO LEGAL ACTION IN A COURT OF LAW.  
©2019 ALL RIGHTS RESERVED

SOUTH & WEST ELEVATION



PLEX FACE CHANNEL LETTERS

QTY: ( 2 ) REQUIRED

67.625 SQ FT

SCALE: 3/8"=1'-0"

**INSTALLATION REQUIREMENTS** for all signs unless specified otherwise on individual sign specifications. Variation from this criteria without written approval from Accent Graphics is strictly forbidden.  
\* All freestanding signs are to be engineered for local conditions by a licensed and registered engineer.

SIGN SIZE	MOUNTING SURFACE							
	SQUARE FOOTAGE	WOOD	SHEET METAL	BRICK	CONCRETE	CONCRETE BLOCK	DRYVIT / EIFIS	STUCCO over wire mesh
	UNDER 10 SQ. FT.	3/8" THRU BOLTS w/ 2" angle iron backer A minimum of ( 4 ) 3/8" bolts are required.	3/8" THRU BOLTS w/ 2" angle iron backer A minimum of ( 4 ) 3/8" bolts are required.	3/8" LEAD ANCHORS A minimum of ( 4 ) 3/8" bolts are required.	3/8" LEAD ANCHORS A minimum of ( 4 ) 3/8" bolts are required.	3/8" TOGGLE A minimum of ( 4 ) 3/8" bolts are required.	3/8" THRU BOLTS w/ 2" angle iron backer A minimum of ( 4 ) 3/8" bolts are required.	3/8" THRU BOLTS w/ 2" angle iron backer A minimum of ( 4 ) 3/8" bolts are required.
	10 SQ. FT. TO 50 SQ. FT.	3/8" THRU BOLTS w/ 2" angle iron backer A minimum of ( 4 ) 3/8" bolts are required.	3/8" THRU BOLTS w/ 2" angle iron backer A minimum of ( 4 ) 3/8" bolts are required.	3/8" LEAD ANCHORS A minimum of ( 4 ) 3/8" bolts are required.	3/8" LEAD ANCHORS A minimum of ( 4 ) 3/8" bolts are required.	3/8" TOGGLE A minimum of ( 4 ) 3/8" bolts are required.	3/8" THRU BOLTS w/ 2" angle iron backer A minimum of ( 4 ) 3/8" bolts are required.	3/8" THRU BOLTS w/ 2" angle iron backer A minimum of ( 4 ) 3/8" bolts are required.
	50 SQ. FT. TO 100 SQ. FT.	3/8" THRU BOLTS w/ 3" angle iron backer A minimum of ( 10 ) 3/8" bolts are required.	3/8" THRU BOLTS w/ 3" angle iron backer A minimum of ( 10 ) 3/8" bolts are required.	1/2" LEAD ANCHORS A minimum of ( 10 ) 1/2" bolts are required.	1/2" LEAD ANCHORS A minimum of ( 10 ) 1/2" bolts are required.	3/8" THRU BOLTS w/ 3" angle iron backer A minimum of ( 10 ) 3/8" bolts are required.	3/8" THRU BOLTS w/ 3" angle iron backer A minimum of ( 10 ) 3/8" bolts are required.	3/8" THRU BOLTS w/ 3" angle iron backer A minimum of ( 10 ) 3/8" bolts are required.
	100 SQ. FT. TO 200 SQ. FT.	1/2" THRU BOLTS w/ 3" angle iron backer A minimum of ( 1 ) 1/2" bolt per each 15 sq ft. is required.	1/2" THRU BOLTS w/ 3" angle iron backer A minimum of ( 1 ) 1/2" bolt per each 15 sq ft. is required.	1/2" WEDGE ANCHOR A minimum of ( 1 ) 1/2" bolt per each 15 sq ft. is required.	1/2" WEDGE ANCHOR A minimum of ( 1 ) 1/2" bolt per each 15 sq ft. is required.	1/2" THRU BOLTS w/ 3" angle iron backer A minimum of ( 1 ) 1/2" bolt per each 15 sq ft. is required.	REQUIRES SPECIAL ENGINEERING	REQUIRES SPECIAL ENGINEERING
	OVER 200 SQ. FT.	REQUIRES SPECIAL ENGINEERING	REQUIRES SPECIAL ENGINEERING	1/2" THRU BOLTS w/ at least 3" angle iron backer A minimum of ( 1 ) 1/2" bolt per each 15 sq ft. is required.	1/2" THRU BOLTS w/ at least 3" angle iron backer A minimum of ( 1 ) 1/2" bolt per each 15 sq ft. is required.	REQUIRES SPECIAL ENGINEERING	REQUIRES SPECIAL ENGINEERING	REQUIRES SPECIAL ENGINEERING

Backers = 24" or 36" long steel angle iron ( 1 1/2" x 1 1/2" min )

**NOTE:**  
ACCESS REQUIRED FOR  
ELECTRICAL & INSTALLATION

**MET** **us** **MET** **Laboratories**

☒ YES  
☐ NO

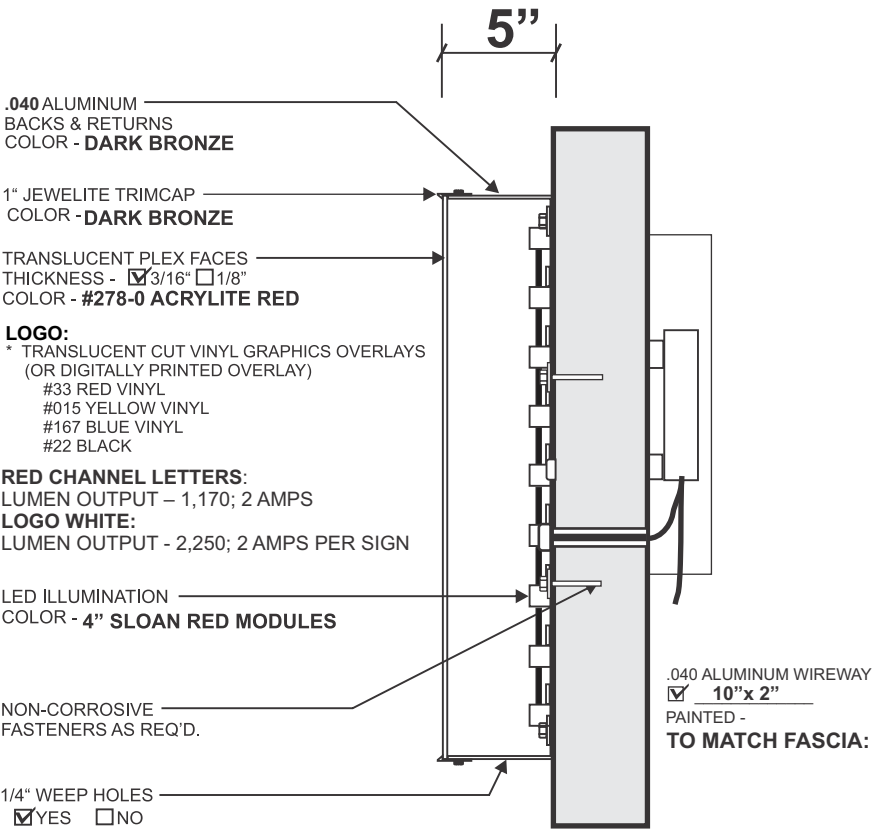
**CLN**

☐ YES ☐ NO

**REMOTE POWER SUPPLY UNIT:**  
120 VAC PRIMARY  
12volt DC SECONDARY.

NUMBER REQ'D. = \_\_\_\_\_

**THIS SIGN IS  
MET/UL COMPLIANT**



**\*WHERE LETTERS LOGO ARE MOUNTED ON PARAPET WALL  
CONCEAL ALL ELECTRICAL IN WIREWAY**

SECTION DETAIL: FLUSH MOUNT CHANNEL LETTERS

DATE	REVISIONS	NAME
3-2-2020	REVISION ON PG. 6, REVISED PANEL & LOGO HEIGHTS TO BE EQUAL	KD

AUTHORIZATION	
CLIENT	DATE
ACCOUNT EXECUTIVE	DATE
LANDLORD	DATE
ALL CHANGES MUST BE INITIALED BY CLIENT AND ACCOUNT EXECUTIVE ON FINAL APPROVED PRINT.	

This drawing is the exclusive property of Accent Graphics, Inc. and is the result of the original work of its employees. The plans are provided to your company for the sole purpose of considering the purchase of a sign manufactured by Accent Graphics, Inc. based on these plans. **OR** the purchase of the plans and design concepts contained therein for manufacture elsewhere. Distribution or exhibition of the plans to anyone outside of your company or the use of the plans by others to manufacture or design a similar sign as displayed in the plans is expressly forbidden. In the event that such exhibition occurs, Accent Graphics will expect payment of a minimum \$2000 design fee in recompense for the time and effort entailed to produce the plans.

CLIENT \_\_\_\_\_ BRAKES PLUS \_\_\_\_\_ STORE # \_\_\_\_\_

INSTALLATION ADDRESS \_\_\_\_\_  
NORTH RICHLAND HILLS, TX

DESIGNER \_\_\_\_\_ KD \_\_\_\_\_ ACCOUNT EXECUTIVE \_\_\_\_\_ NT

DATE \_\_\_\_\_ 2-27-2020 \_\_\_\_\_ SHEET \_\_\_\_\_ 1 \_\_\_\_\_ OF \_\_\_\_\_ 7 \_\_\_\_\_ DESIGN # \_\_\_\_\_ 20-185 REV-1

Gerber FILE = P:\1-2020-Jobs\B\Brakes Plus\N Richland Hills\Production\JOBS  
Corel FILE = P:\1-2020-Jobs\B\Brakes Plus\N Richland Hills\Drawings

**accent** **signs** **graphics**

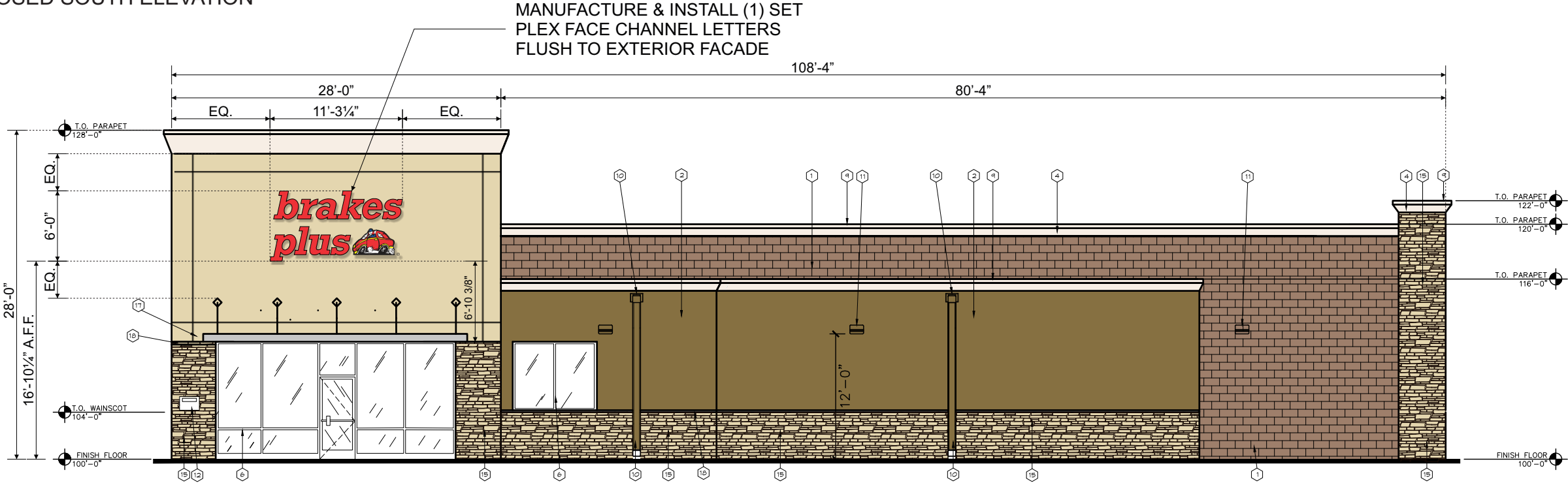
COMPLETE SIGN SERVICE & FABRICATION

523 E. ROCK ISLAND  
GRAND PRAIRIE, TX 75050  
EMAIL  
WEBSITE www.accentgraphicsinc.com

TOLL FREE (800) 810-3044  
METRO (972) 399-0333  
FAX (972) 986-4456  
FAX (800) 810-3045



PROPOSED SOUTH ELEVATION



PLEX FACE ILLUMINATED CHANNEL LETTERS - FLUSH MOUNT

QTY: (1) REQUIRED

Scale: 3/32" = 1'-0"

DATE	REVISIONS	NAME

AUTHORIZATION	
CLIENT	DATE
ACCOUNT EXECUTIVE	DATE
LANDLORD	DATE
ALL CHANGES MUST BE INITIALED BY CLIENT AND ACCOUNT EXECUTIVE ON FINAL APPROVED PRINT.	

This drawing is the exclusive property of Accent Graphics, Inc. and is the result of the original work of its employees. The plans are provided to your company for the sole purpose of considering the purchase of a sign manufactured by Accent Graphics, Inc. based on these plans. OR the purchase of the plans and design concepts contained therein for manufacture elsewhere. Distribution or exhibition of the plans to anyone outside of your company or the use of the plans by others to manufacture or design a similar sign as displayed in the plans is expressly forbidden. In the event that such exhibition occurs, Accent Graphics will expect payment of a minimum \$2000 design fee in recompense for the time and effort entailed to produce the plans.

CLIENT BRAKES PLUS STORE #           

INSTALLATION ADDRESS NORTH RICHLAND HILLS, TX

DESIGNER KD ACCOUNT EXECUTIVE NT

DATE 2-27-2020 SHEET 2 OF 7 DESIGN # 20-185 REV-1

Gerber FILE = P:\1-2020-Jobs\B\Brakes Plus\N Richland Hills\Production\JOBS  
Corel FILE = P:\1-2020-Jobs\B\Brakes Plus\N Richland Hills\Drawings

**accent****graphics**

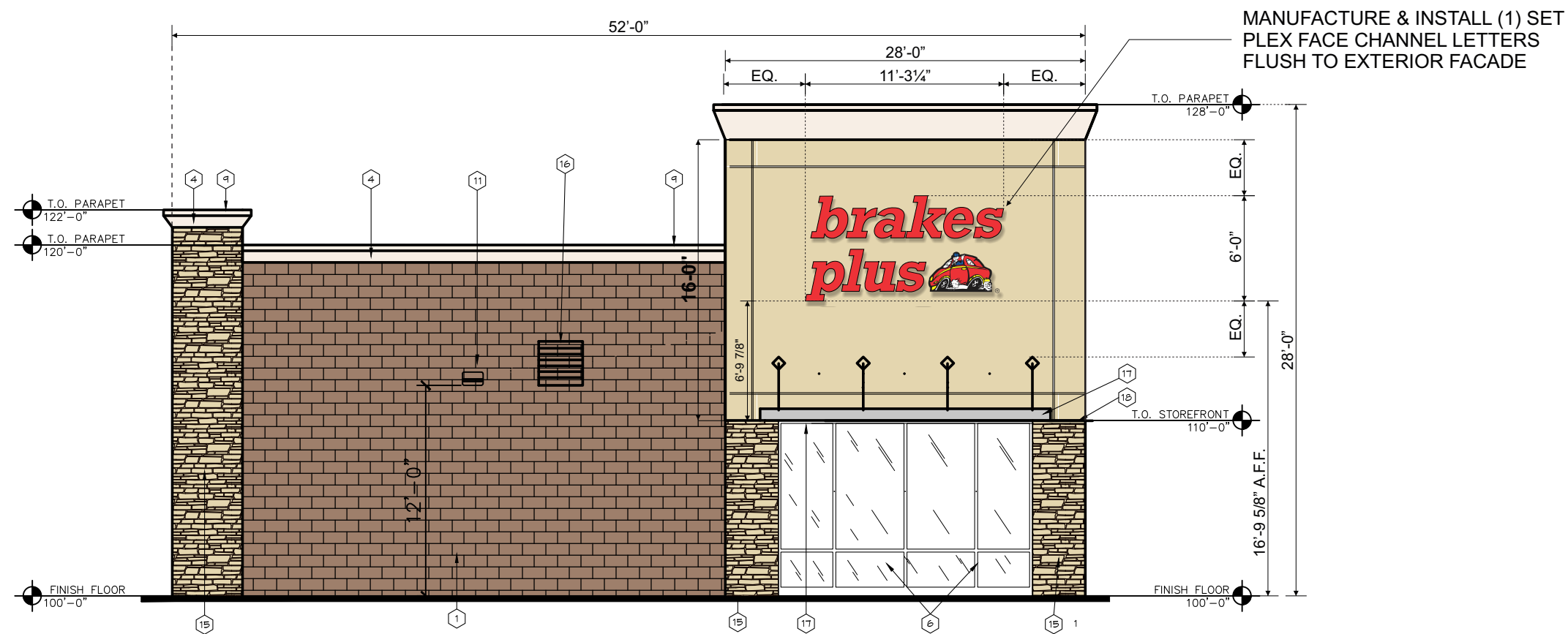
COMPLETE **SIGN** SERVICE & FABRICATION

523 E. ROCK ISLAND  
GRAND PRAIRIE, TX 75050

TOLL FREE (800) 810-3044  
METRO (972) 399-0333  
FAX (972) 986-4456  
EMAIL  
WEBSITE [www.accentgraphicsinc.com](http://www.accentgraphicsinc.com)

FAX (800) 810-3045

PROPOSED WEST ELEVATION



PLEX FACE ILLUMINATED CHANNEL LETTERS - FLUSH MOUNT

QTY: (1) REQUIRED

Scale: 1/8" = 1'-0"

DATE	REVISIONS	NAME

AUTHORIZATION	
CLIENT	DATE
ACCOUNT EXECUTIVE	DATE
LANDLORD	DATE
ALL CHANGES MUST BE INITIALED BY CLIENT AND ACCOUNT EXECUTIVE ON FINAL APPROVED PRINT.	

This drawing is the exclusive property of Accent Graphics, Inc. and is the result of the original work of its employees. The plans are provided to your company for the sole purpose of considering the purchase of a sign manufactured by Accent Graphics, Inc. based on these plans. OR the purchase of the plans and design concepts contained therein for manufacture elsewhere. Distribution or exhibition of the plans to anyone outside of your company or the use of the plans by others to manufacture or design a similar sign as displayed in the plans is expressly forbidden. In the event that such exhibition occurs, Accent Graphics will expect payment of a minimum \$2000 design fee in recompense for the time and effort entailed to produce the plans.

CLIENT BRAKES PLUS STORE #       

INSTALLATION ADDRESS NORTH RICHLAND HILLS, TX

DESIGNER KD ACCOUNT EXECUTIVE NT

DATE 2-27-2020 SHEET 3 OF 7 DESIGN # 20-185 REV-1

Gerber FILE = P:\1-2020-Jobs\B\Brakes Plus\N Richland Hills\Production\JOBS  
Corel FILE = P:\1-2020-Jobs\B\Brakes Plus\N Richland Hills\Drawings

**accent****graphics**

COMPLETE **SIGN** SERVICE & FABRICATION

523 E. ROCK ISLAND  
GRAND PRAIRIE, TX 75050

TOLL FREE (800) 810-3044  
METRO (972) 399-0333  
FAX (972) 986-4456  
EMAIL (800) 810-3045  
WEBSITE [www.accentgraphicsinc.com](http://www.accentgraphicsinc.com)





PLEX FACE CHANNEL LETTERS

( 1 ) SET REQUIRED

WEST ELEVATION

Scale: 1/2" = 1'-0"

NOTE:  
ACCESS REQUIRED FOR  
ELECTRICAL & INSTALLATION

.040 ALUMINUM  
BACKS & RETURNS  
COLOR - **DARK BRONZE**

1" JEWELITE TRIMCAP  
COLOR - **DARK BRONZE**

TRANSLUCENT PLEX FACES  
THICKNESS - ☒ 3/16" ☐ 1/8"  
COLOR - **#278-0 ACRYLITE RED**

LED ILLUMINATION  
COLOR - **4" SLOAN RED MODULES**

NON-CORROSIVE  
FASTENERS AS REQ'D.

1/4" WEEP HOLES  
☒ YES ☐ NO

.040 ALUMINUM WIREWAY  
☒ 10"x 2"  
PAINTED - **TO MATCH FASCIA:**

INSTALLATION REQUIREMENTS for all signs unless specified otherwise on individual sign specifications.  
Variation from this criteria without written approval from Accent Graphics is strictly forbidden.  
\* All freestanding signs are to be engineered for local conditions by a licensed and registered engineer.

SIGN SIZE	MOUNTING SURFACE					
	SQUARE FOOTAGE	WOOD	SHEET METAL	BRICK	CONCRETE	CONCRETE BLOCK
	UNDER 10 SQ. FT.	3/8" THRU BOLTS w/ 2" angle iron backer A minimum of ( 4 ) 3/8" bolts are required.	3/8" THRU BOLTS w/ 2" angle iron backer A minimum of ( 4 ) 3/8" bolts are required.	3/8" LEAD ANCHORS A minimum of ( 4 ) 3/8" bolts are required.	3/8" LEAD ANCHORS A minimum of ( 4 ) 3/8" bolts are required.	3/8" THRU BOLTS w/ 2" angle iron backer A minimum of ( 4 ) 3/8" bolts are required.
	10 SQ. FT. TO 50 SQ. FT.	3/8" THRU BOLTS w/ 2" angle iron backer A minimum of ( 4 ) 3/8" bolts are required.	3/8" THRU BOLTS w/ 2" angle iron backer A minimum of ( 4 ) 3/8" bolts are required.	3/8" LEAD ANCHORS A minimum of ( 4 ) 3/8" bolts are required.	3/8" LEAD ANCHORS A minimum of ( 4 ) 3/8" bolts are required.	3/8" THRU BOLTS w/ 2" angle iron backer A minimum of ( 4 ) 3/8" bolts are required.
	50 SQ. FT. TO 100 SQ. FT.	3/8" THRU BOLTS w/ 3" angle iron backer A minimum of ( 10 ) 3/8" bolts are required.	3/8" THRU BOLTS w/ 3" angle iron backer A minimum of ( 10 ) 3/8" bolts are required.	1 1/2" LEAD ANCHORS A minimum of ( 10 ) 1/2" bolts are required.	1 1/2" LEAD ANCHORS A minimum of ( 10 ) 1/2" bolts are required.	3/8" THRU BOLTS w/ 1" angle iron backer A minimum of ( 10 ) 3/8" bolts are required.
	100 SQ. FT. TO 200 SQ. FT.	1 1/2" THRU BOLTS w/ 3" angle iron backer A minimum of ( 1 ) 1 1/2" bolt per each 15 sq ft. is required.	1 1/2" THRU BOLTS w/ 3" angle iron backer A minimum of ( 1 ) 1 1/2" bolt per each 15 sq ft. is required.	1 1/2" WEDGE ANCHOR A minimum of ( 1 ) 1 1/2" bolt per each 15 sq ft. is required.	1 1/2" WEDGE ANCHOR A minimum of ( 1 ) 1 1/2" bolt per each 15 sq ft. is required.	1 1/2" THRU BOLTS w/ 3" angle iron backer A minimum of ( 1 ) 1 1/2" bolt per each 15 sq ft. is required.
	OVER 200 SQ. FT.	REQUIRES SPECIAL ENGINEERING	REQUIRES SPECIAL ENGINEERING	1 1/2" THRU BOLTS w/ at least 3" angle iron backer A minimum of ( 1 ) 1 1/2" bolt per each 15 sq ft. is required.	1 1/2" THRU BOLTS w/ at least 3" angle iron backer A minimum of ( 1 ) 1 1/2" bolt per each 15 sq ft. is required.	REQUIRES SPECIAL ENGINEERING

Backers = 24" or 36" long steel angle iron ( 1 1/2" x 1 1/2" min. )

**\*WHERE LETTERS LOGO ARE MOUNTED ON PARAPET WALL  
CONCEAL ALL ELECTRICAL IN WIREWAY**

**SECTION DETAIL: FLUSH MOUNT CHANNEL LETTERS**

DATE	REVISIONS	NAME	AUTHORIZATION
			CLIENT _____ DATE _____
			ACCOUNT EXECUTIVE _____ DATE _____
			LANDLORD _____ DATE _____
			ALL CHANGES MUST BE INITIALED BY CLIENT AND ACCOUNT EXECUTIVE ON FINAL APPROVED PRINT.

This drawing is the exclusive property of Accent Graphics, Inc. and is the result of the original work of its employees. The plans are provided to your company for the sole purpose of considering the purchase of a sign manufactured by Accent Graphics, Inc. based on these plans. **OR** the purchase of the plans and design concepts contained therein for manufacture elsewhere. Distribution or exhibition of the plans to anyone outside of your company or the use of the plans by others to manufacture or design a similar sign as displayed in the plans is expressly forbidden. In the event that such exhibition occurs, Accent Graphics will expect payment of a minimum \$2000 design fee in recompense for the time and effort entailed to produce the plans.

CLIENT \_\_\_\_\_ BRAKES PLUS \_\_\_\_\_ STORE # \_\_\_\_\_  
INSTALLATION ADDRESS \_\_\_\_\_  
NORTH RICHLAND HILLS, TX  
DESIGNER \_\_\_\_\_ KD \_\_\_\_\_ ACCOUNT EXECUTIVE \_\_\_\_\_ NT  
DATE 2-27-2020 SHEET 4 OF 7 DESIGN # 20-185 REV-1  
Gerber FILE = P:\1-2020-Jobs\B\Brakes Plus\N Richland Hills\Production\JOBS  
Corel FILE = P:\1-2020-Jobs\B\Brakes Plus\N Richland Hills\Drawings

**accent****graphics**

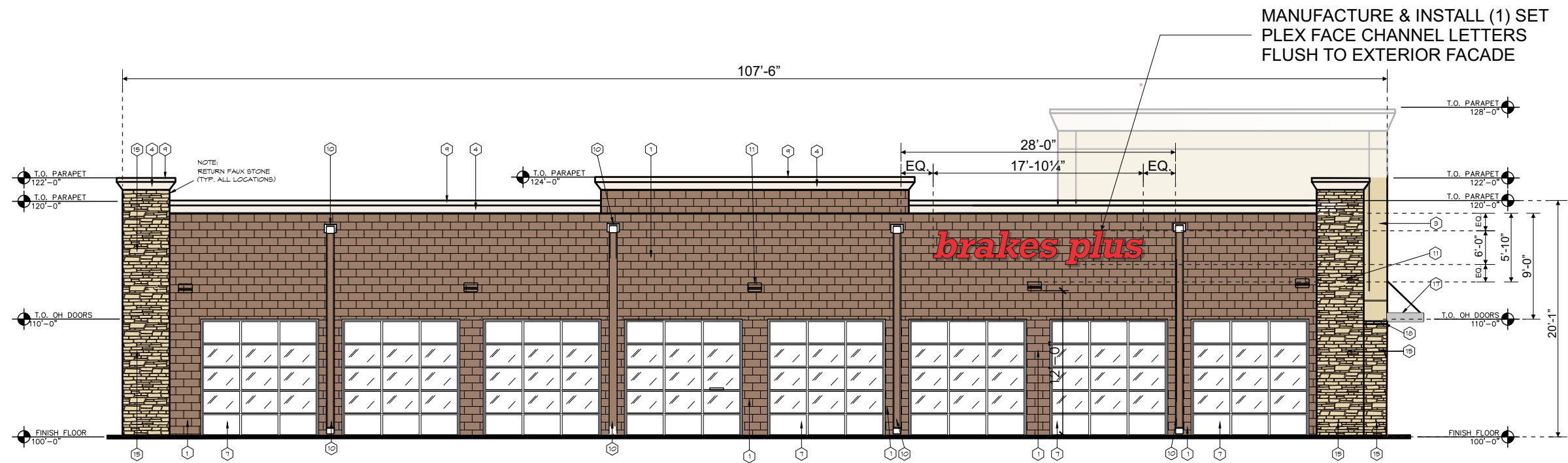
COMPLETE **SIGN** SERVICE & FABRICATION

523 E. ROCK ISLAND  
GRAND PRAIRIE, TX 75050  
EMAIL  
WEBSITE www.accentgraphicsinc.com

TOLL FREE (800) 810-3044  
METRO (972) 399-0333  
FAX (972) 986-4456  
FAX (800) 810-3045

Regulated by the Texas Department of Licensing and Regulation P. O. Box 12157, Austin, TX 78711 Tel: 512.463.6599 Toll Free (in TX): 800.803.9202 Online: http://www.license.state.tx.us/complaints State of Texas Contractor #18050

PROPOSED NORTH ELEVATION



PLEX FACE ILLUMINATED CHANNEL LETTERS - FLUSH MOUNT

QTY: (1) REQUIRED

Scale: 3/32" = 1'-0"

DATE	REVISIONS	NAME

AUTHORIZATION	
CLIENT	DATE
ACCOUNT EXECUTIVE	DATE
LANDLORD	DATE
ALL CHANGES MUST BE INITIALED BY CLIENT AND ACCOUNT EXECUTIVE ON FINAL APPROVED PRINT.	

This drawing is the exclusive property of Accent Graphics, Inc. and is the result of the original work of its employees. The plans are provided to your company for the sole purpose of considering the purchase of a sign manufactured by Accent Graphics, Inc. based on these plans. OR the purchase of the plans and design concepts contained therein for manufacture elsewhere. Distribution or exhibition of the plans to anyone outside of your company or the use of the plans by others to manufacture or design a similar sign as displayed in the plans is expressly forbidden. In the event that such exhibition occurs, Accent Graphics will expect payment of a minimum \$2000 design fee in recompense for the time and effort entailed to produce the plans.

CLIENT BRAKES PLUS STORE #           

INSTALLATION ADDRESS NORTH RICHLAND HILLS, TX

DESIGNER KD ACCOUNT EXECUTIVE NT

DATE 2-27-2020 SHEET 5 OF 7 DESIGN # 20-185 REV-1

Gerber FILE = P:\1-2020-Jobs\B\Brakes Plus\N Richland Hills\Production\JOBS  
Corel FILE = P:\1-2020-Jobs\B\Brakes Plus\N Richland Hills\Drawings

accent

SIGNS

graphics

COMPLETE SIGN SERVICE & FABRICATION

523 E. ROCK ISLAND  
GRAND PRAIRIE, TX 75050

TOLL FREE (800) 810-3044  
METRO (972) 399-0333  
FAX (972) 986-4456  
FAX (800) 810-3045

EMAIL  
WEBSITE

www.accentgraphicsinc.com






D/F MONUMENT SIGN W/ ILLUMINATED PLEX FACE CABINETS  
QTY: (2) LED ILLUMINATED CABINETS REQUIRED Scale: 3/4" = 1'-0"  
STONE/MASONRY BY OTHERS

DATE	REVISIONS	NAME
3-2-2020	REVISED PANEL & LOGO HEIGHTS TO BE EQUAL	KD

AUTHORIZATION	
CLIENT	DATE
ACCOUNT EXECUTIVE	DATE
LANDLORD	DATE
ALL CHANGES MUST BE INITIALED BY CLIENT AND ACCOUNT EXECUTIVE ON FINAL APPROVED PRINT.	

This drawing is the exclusive property of Accent Graphics, Inc. and is the result of the original work of its employees. The plans are provided to your company for the sole purpose of considering the purchase of a sign manufactured by Accent Graphics, Inc. based on these plans. OR the purchase of the plans and design concepts contained therein for manufacture elsewhere. Distribution or exhibition of the plans to anyone outside of your company or the use of the plans by others to manufacture or design a similar sign as displayed in the plans is expressly forbidden. In the event that such exhibition occurs, Accent Graphics will expect payment of a minimum \$2000 design fee in recompense for the time and effort entailed to produce the plans.

CLIENT BRAKES PLUS STORE #             
INSTALLATION ADDRESS NORTH RICHLAND HILLS, TX  
DESIGNER KD ACCOUNT EXECUTIVE NT  
DATE 2-27-2020 SHEET 6 OF 7 DESIGN # 20-185 REV-1  
Gerber FILE = P:\1-2020-Jobs\B\Brakes Plus\N Richland Hills\Production\JOBS  
Corel FILE = P:\1-2020-Jobs\B\Brakes Plus\N Richland Hills\Drawings

**accent****graphics**

COMPLETE **SIGN** SERVICE & FABRICATION

523 E. ROCK ISLAND  
GRAND PRAIRIE, TX 75050  
EMAIL  
WEBSITE [www.accentgraphicsinc.com](http://www.accentgraphicsinc.com)

TOLL FREE (800) 810-3044  
METRO (972) 399-0333  
FAX (972) 986-4456  
FAX (800) 810-3045