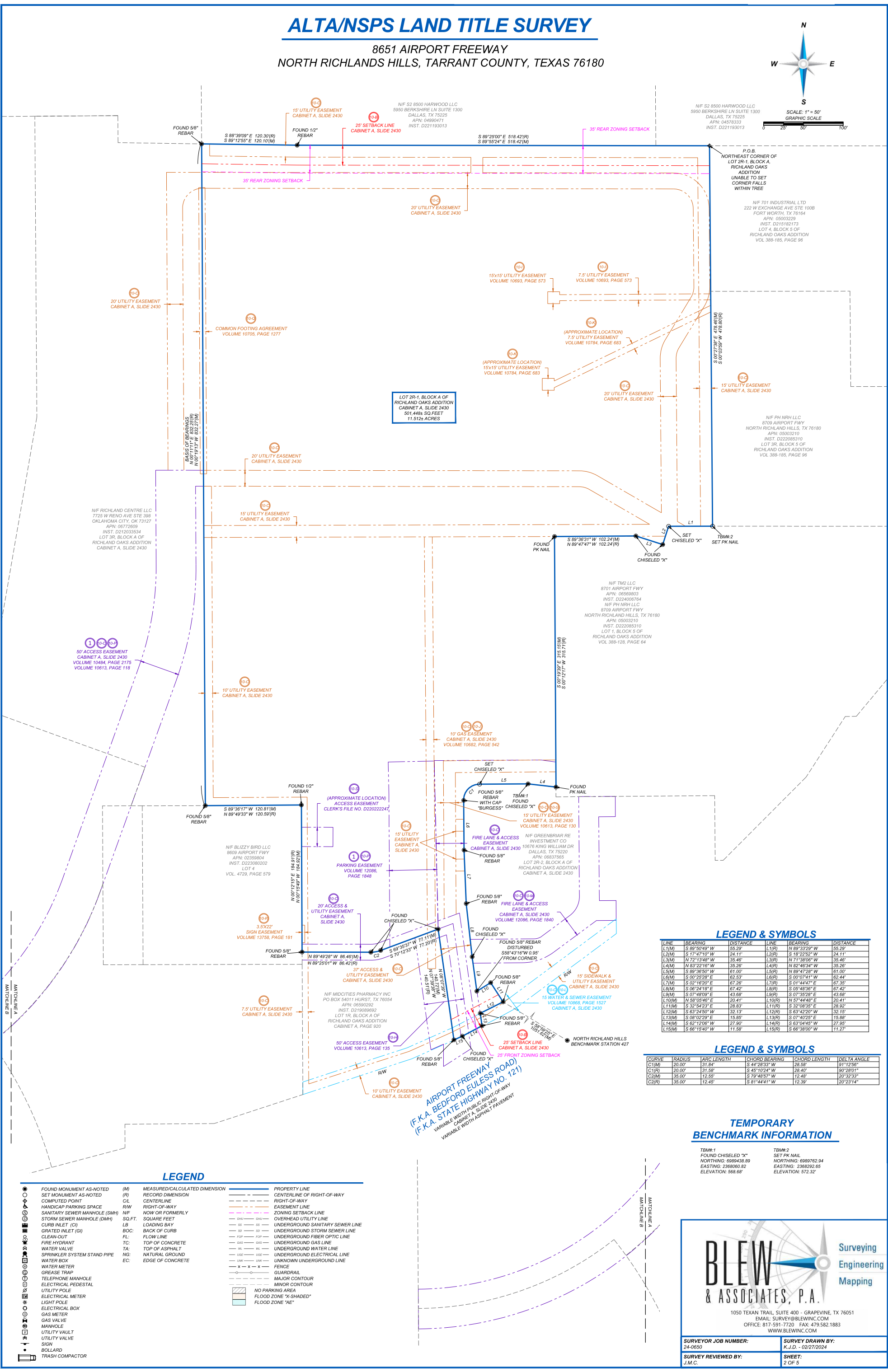
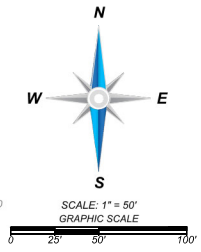


ALTA/NSPS LAND TITLE SURVEY

8651 AIRPORT FREEWAY NORTH RICHLANDS HILLS, TARRANT COUNTY, TEXAS 76180



LEGEND & SYMBOLS

LINE	BEARING	DISTANCE	LINE	BEARING	DISTANCE
L1(M)	S 89°50'49" W	55.29'	L1(R)	N 89°33'29" W	55.29'
L2(M)	S 17°47'10" W	24.11'	L2(R)	S 18°22'22" W	24.11'
L3(M)	N 72°13'48" W	35.46'	L3(R)	N 71°38'08" W	35.46'
L4(M)	N 83°22'16" E	35.26'	L4(R)	N 82°46'34" W	35.26'
L5(M)	S 89°36'50" W	61.00'	L5(R)	N 89°47'28" W	61.00'
L6(M)	S 00°25'28" E	62.53'	L6(R)	S 00°07'41" W	62.44'
L7(M)	S 02°16'20" E	67.76'	L7(R)	S 01°44'47" E	67.35'
L8(M)	S 06°24'18" E	67.42'	L8(R)	S 05°48'36" E	67.42'
L9(M)	S 07°48'09" E	43.68'	L9(R)	S 07°35'28" E	43.68'
L10(M)	N 58°05'46" E	20.41'	L10(R)	N 57°44'48" E	20.41'
L11(M)	S 32°54'23" E	28.83'	L11(R)	S 32°05'35" E	28.92'
L12(M)	S 63°24'50" W	32.13'	L12(R)	S 63°42'20" W	32.15'
L13(M)	S 08°02'29" E	15.85'	L13(R)	S 07°40'25" E	15.88'
L14(M)	S 62°12'06" W	27.90'	L14(R)	S 63°04'45" W	27.95'
L15(M)	S 66°15'40" W	11.58'	L15(R)	S 66°38'00" W	11.27'

LEGEND & SYMBOLS

CURVE	RADIUS	ARC LENGTH	CHORD BEARING	CHORD LENGTH	DELTA ANGLE
C1(M)	20.00'	31.84'	S 44°28'31" W	26.58'	91°12'56"
C1(R)	20.00'	31.88'	S 45°10'24" W	28.40'	90°28'01"
C2(M)	35.00'	12.55'	S 79°48'57" W	12.48'	20°32'33"
C2(R)	35.00'	12.45'	S 81°44'41" W	12.39'	20°23'14"

TEMPORARY BENCHMARK INFORMATION

TBM#1 FOUND CHISELED "X" NORTHING: 6989438.89 EASTING: 2366060.82 ELEVATION: 569.69'	TBM#2 SET PK NAIL NORTHING: 6989762.04 EASTING: 2368292.65 ELEVATION: 572.32'
--	---

LEGEND

● FOUND MONUMENT AS-NOTED (M)	MEASURED/CALCULATED DIMENSION	— PROPERTY LINE
○ SET MONUMENT AS-NOTED (R)	RECORD DIMENSION	— CENTERLINE OF RIGHT-OF-WAY
○ COMPUTED POINT (CL)	CENTERLINE	— RIGHT-OF-WAY
○ HANDICAP PARKING SPACE (RW)	RIGHT-OF-WAY	— EASEMENT LINE
○ SANITARY SEWER MANHOLE (SMH)	NOW OR FORMERLY	— ZONING SETBACK LINE
○ STORM SEWER MANHOLE (DMH)	SQ.FT.	— OVERHEAD UTILITY LINE
○ CURB INLET (CI)	SQUARE FEET	— SS — SS UNDERGROUND SANITARY SEWER LINE
○ GRATED INLET (GI)	BOC: BACK OF CURB	— SO — SO UNDERGROUND STORM SEWER LINE
○ CLEAN-OUT (FL)	FL: FLOW LINE	— FOP — FOP UNDERGROUND FIBER OPTIC LINE
○ FIRE HYDRANT (TC)	TC: TOP OF CONCRETE	— GAS — GAS UNDERGROUND GAS LINE
○ WATER VALVE (TA)	TA: TOP OF ASPHALT	— USE — USE UNDERGROUND WATER LINE
○ SPRINKLER SYSTEM STAND PIPE (LNK)	NG: NATURAL GROUND	— UNK — UNK UNKNOWN UNDERGROUND LINE
○ WATER BOX (X-X-X-X)	EC: EDGE OF CONCRETE	— FENCE
○ WATER METER (GUARDRAIL)		— GUARDRAIL
○ GREASE TRAP (MAJOR CONTOUR)		— MAJOR CONTOUR
○ TELEPHONE MANHOLE (MINOR CONTOUR)		— MINOR CONTOUR
○ ELECTRICAL PEDESTAL (NO PARKING AREA)		— NO PARKING AREA
○ UTILITY POLE (FLOOD ZONE "X-SHADED")		— FLOOD ZONE "X-SHADED"
○ ELECTRICAL METER (FLOOD ZONE "A")		— FLOOD ZONE "A"
○ LIGHT POLE		
○ ELECTRICAL BOX		
○ GAS METER		
○ GAS VALVE		
○ MANHOLE		
○ UTILITY VALVT		
○ UTILITY VALVE		
○ SIGN		
○ BOLLARD		
○ TRASH COMPACTOR		

BLEW & ASSOCIATES, P.A.

Surveying
Engineering
Mapping

1050 TEXAN TRAIL, SUITE 400 - GRAPEVINE, TX 76051
EMAIL: SURVEY@BLEWINC.COM
OFFICE: 817-551-7720 FAX: 479-582-1883
WWW.BLEWINC.COM

SURVEYOR JOB NUMBER: 24-0650	SURVEY DRAWN BY: K.J.D. - 02/27/2024
SURVEY REVIEWED BY: J.M.C.	SHEET: 2 OF 5

