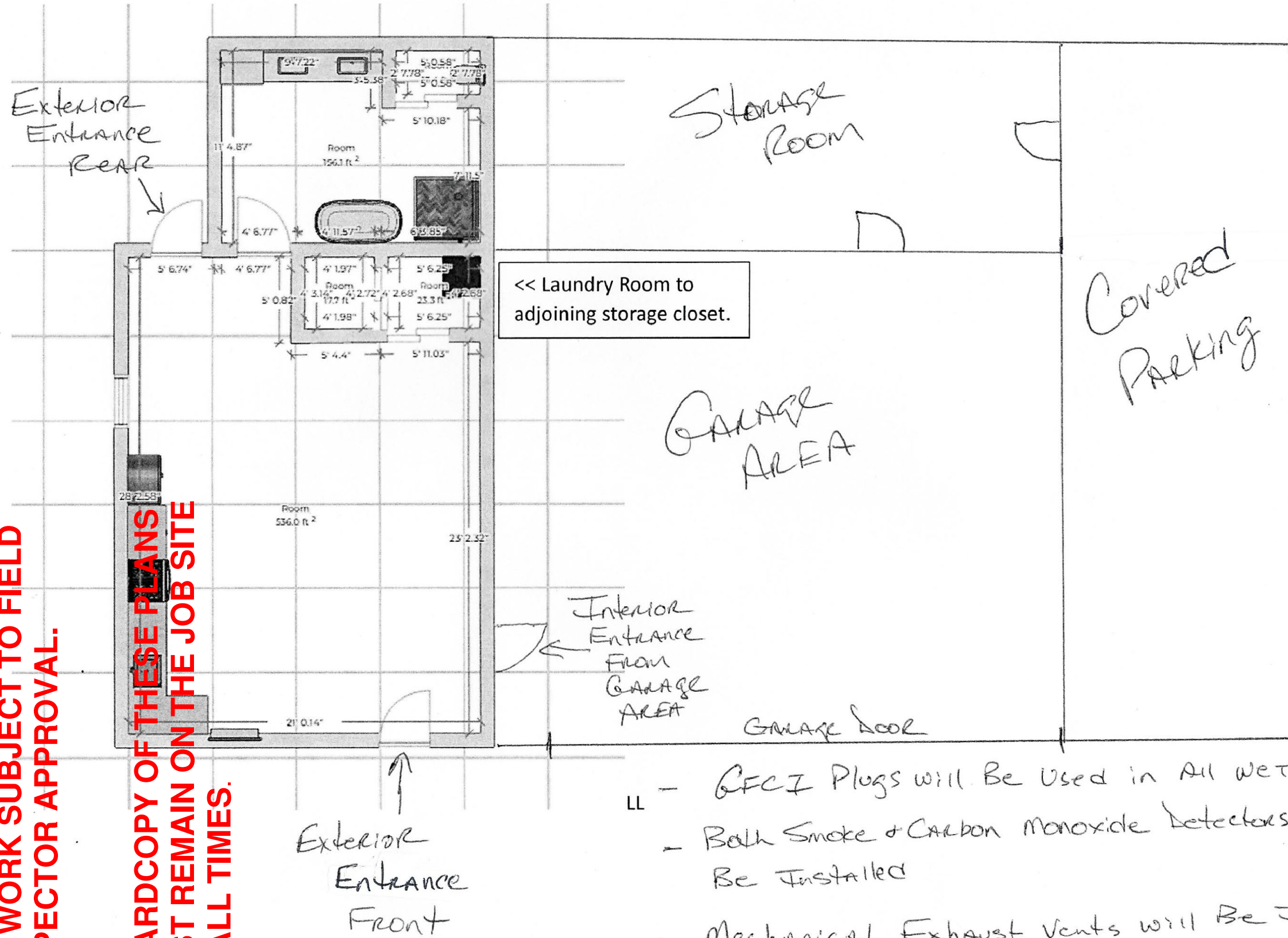


10-28-24

APPROVED BY KK

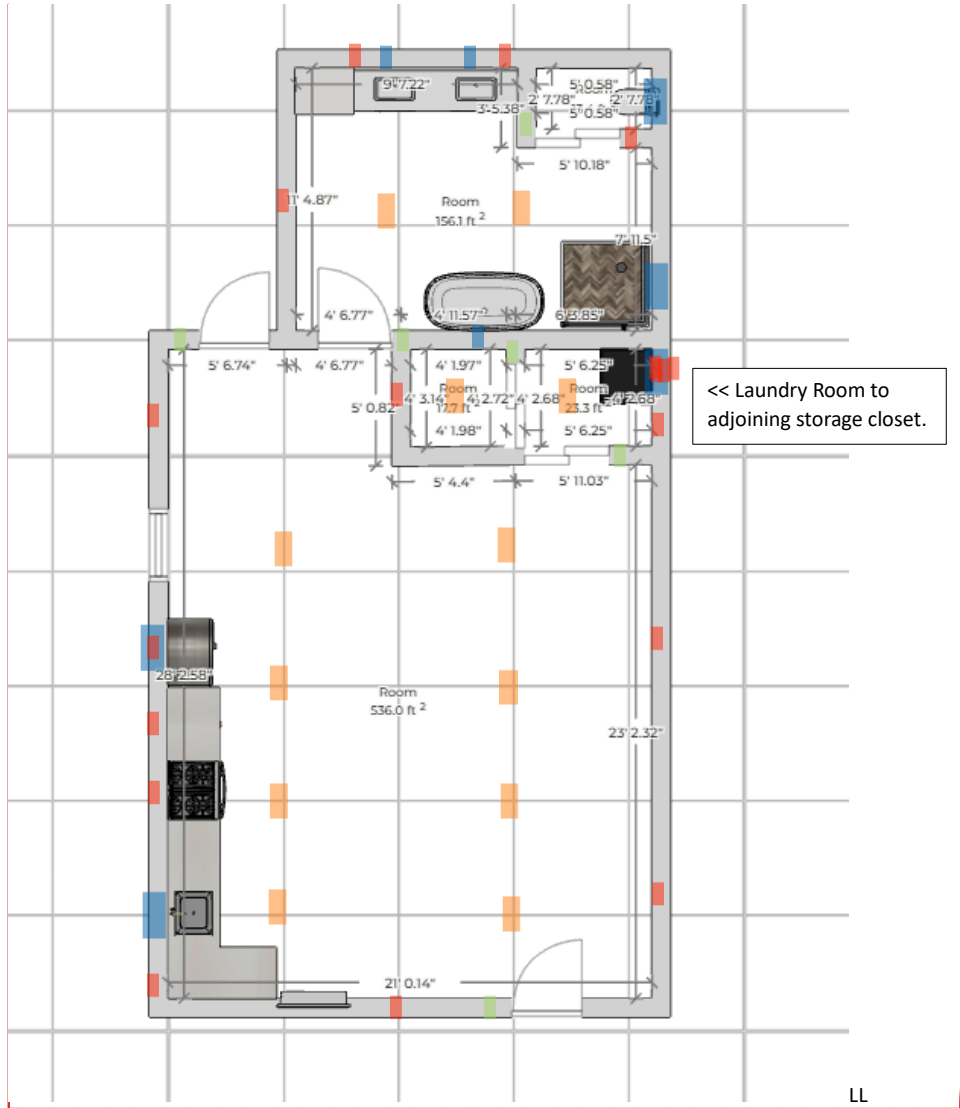
ALL WORK SUBJECT TO FIELD INSPECTOR APPROVAL.

A HARDCOPY OF THESE PLANS MUST REMAIN ON THE JOB SITE AT ALL TIMES.



- LL - GFCI Plugs will Be Used in All wet AREAS
- Bath Smoke + Carbon Monoxide Detectors will Be Installed
- Mechanical Exhaust Vents will Be Installed In the Bathroom, Laundry Room, ETC

APPROVED BY KK



Commented [KP1]: Electric Outlets

Commented [KP2]: Plumbing Locations

Commented [KP3]: Recessed Lighting

Commented [KP4]: Light Switches

