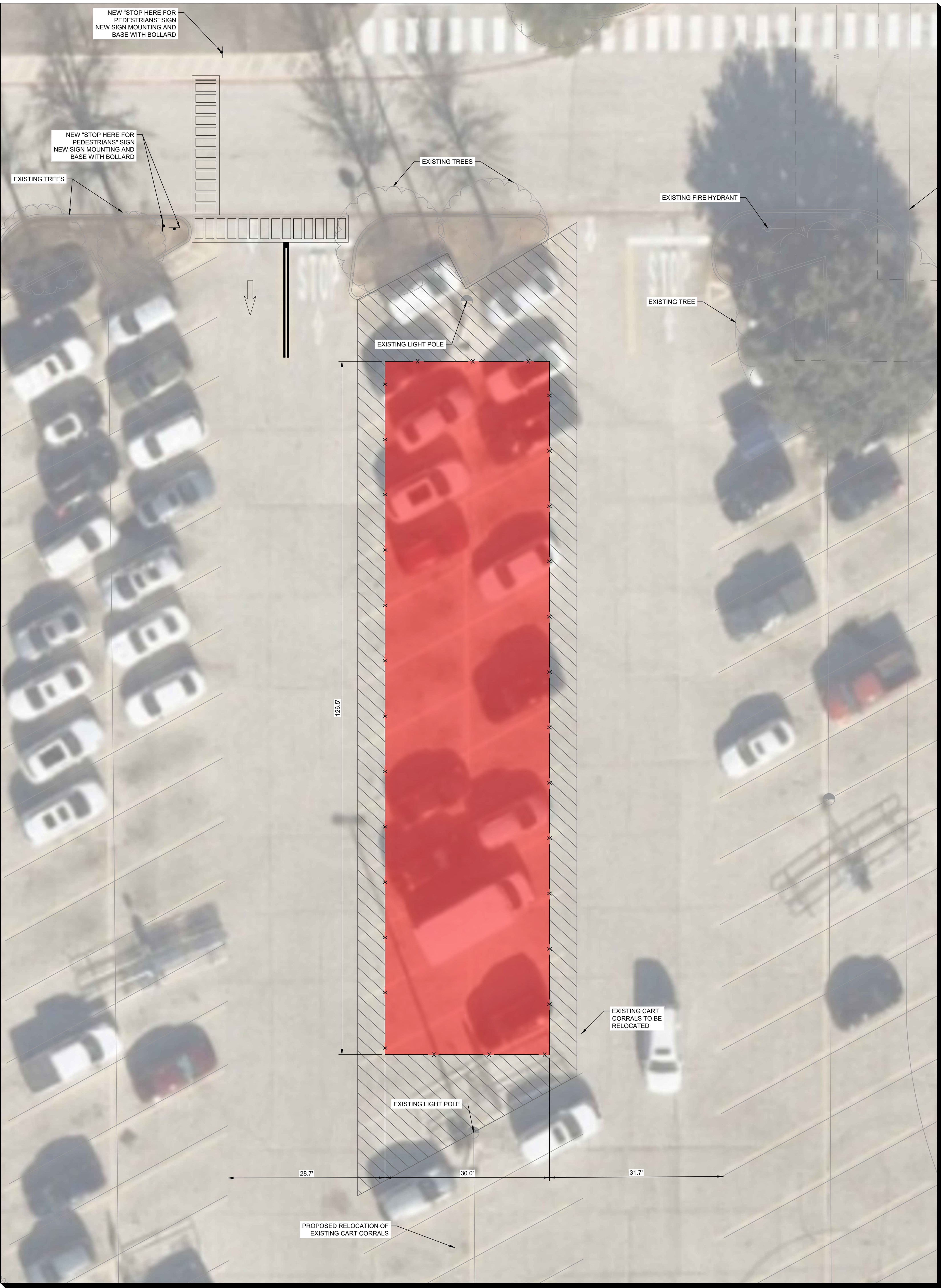


- NOTES
1. SITE PLAN IS BASED OF AERIAL.

2. A GENERATOR IS SCHEDULED TO BE USED AS THE PRIMARY SOURCE OF ELECTRICITY FOR THE PROPOSED WINGS DELIVERY PROGRAM DURING THE FIRST 12 MONTHS OF SERVICE.

| SITE DATA TABLE | |
|-------------------|--|
| GENERAL SITE DATA | |
| LEGAL DESCRIPTION | WAL-MART ADDITION-NR.H Block 1 Lot 1A1 |
| ZONING | PD-38 (RETAIL DEVELOPMENT) |
| SITE ACREAGE | 23.347 ACRES |
| ADDRESS | 9101 N TARRANT PKWY |



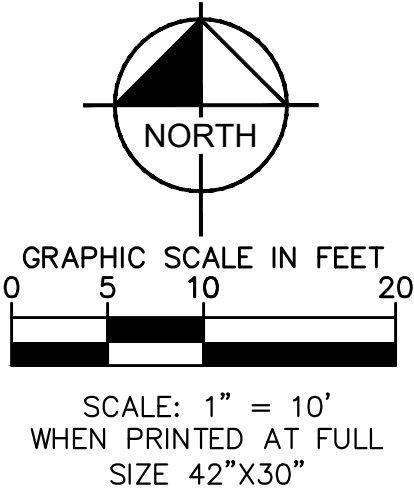
INSET A
SCALE: 1"=10'

| PARKING INFORMATION | | | | | | | | | | |
|-----------------------|--------------------------|------------------------|--------------------------|---------------------------------|-----------------------------|-----------------------------|-----------------------------|-----------------------|-------------------------|-----------------------------|
| WALMART BUILDING INFO | | AHJ PARKING REQUIRED | WALMART PARKING REQUIRED | REGULAR PARKING STALLS PROVIDED | OGP PARKING STALLS PROVIDED | ADA PARKING STALLS PROVIDED | CART CORRAL STALLS PROVIDED | TOTAL STALLS PROVIDED | TOTAL AHJ PARKING RATIO | TOTAL WALMART PARKING RATIO |
| WALMART | BUILDING SF ¹ | SPACES | SPACES | SPACES ^{2,3} | SPACES ^{2,3} | SPACES ^{2,3} | SPACES ^{2,3} | SPACES ^{2,3} | SPACES ³ | SPACES ³ |
| EXISTING | 206,913 SF | 828 SPACES 1.00/250 SF | 828 SPACES 4.00/1,000 SF | 840 | 16 | 19 | 20 | 875 | 1.06/250 SF | 4.23/1,000 SF |
| PROPOSED | 206,913 SF | 828 SPACES 1.00/250 SF | 828 SPACES 4.00/1,000 SF | 815 | 16 | 19 | 18 | 850 | 1.03/250 SF | 4.11/1,000 SF |

- PARKING INFORMATION NOTES:
1. USABLE FLOOR AREA IS PER INFORMATION SHOWN IN THE WALMART STORE PLANNING PROJECT MANAGEMENT APPLICATION SYSTEM (LUCERNEX).

2. EXISTING PARKING COUNTS ARE BASED ON ORIGINAL CONSTRUCTION PLANS AND A REVIEW OF AVAILABLE AERIAL PHOTOGRAPHS.

3. PARKING SPACES OCCUPIED BY CART CORRALS HAVE BEEN EXCLUDED FROM THE PARKING COUNTS AND PARKING RATIOS.



DESIGN / CODE SUMMARY

REDUCTION OF PARKING STALLS:
OPTION 1 - 27 STALLS

ENTITLEMENT SUMMARY:
TBD

DISCLAIMERS

* PRELIMINARY DESIGN CONCEPT ONLY

* WALMART CM PARTNERS HAVE NOT REVIEWED TO VERIFY/APPROVE AS OF 02/05/2024

| | |
|----------------------------------|------------|
| SCOPE TRIP: | MM/DD/YYYY |
| PROJECTED ENTITLEMENT SUBMITTAL: | MM/DD/YYYY |
| PROJECTED ENTITLEMENT APPROVAL: | MM/DD/YYYY |
| PROJECTED PWO: | MM/DD/YYYY |
| PROJECTED PERMIT APPROVAL: | MM/DD/YYYY |
| POSSESSION DATE: | MM/DD/YYYY |
| CONSTRUCTION COMPLETE: | MM/DD/YYYY |



02/05/2024

#3274
NORTH RICHLAND
HILLS, TX
Kimley»Horn