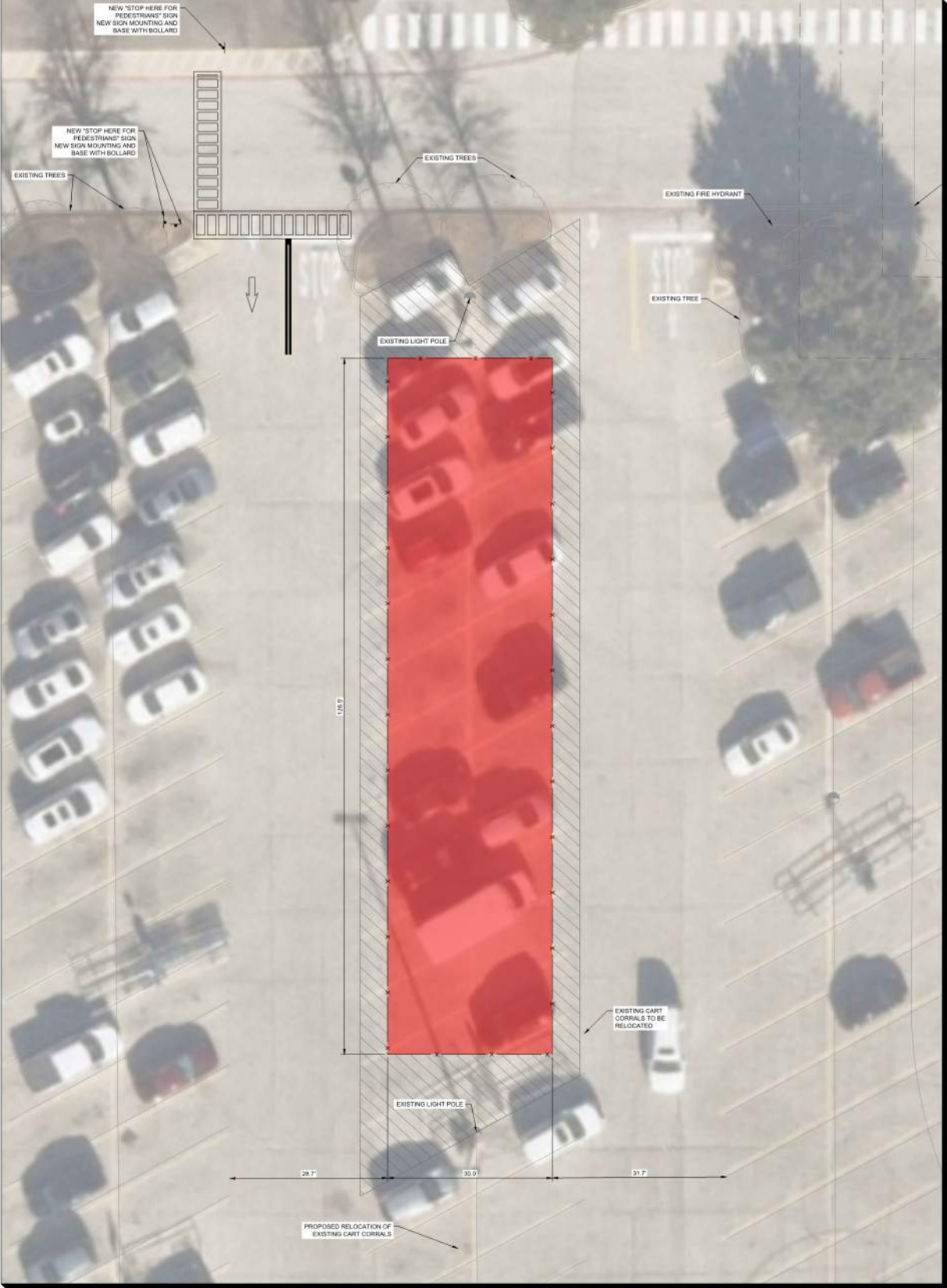


NOTES	
1.	SITE PLAN IS BASED ON AERIAL.
2.	A GENERATOR IS SCHEDULED TO BE USED AS THE PRIMARY SOURCE OF ELECTRICITY FOR THE PROPOSED WINGS DELIVERY PROGRAM DURING THE FIRST 12 MONTHS OF SERVICE.

SITE DATA TABLE	
GENERAL SITE DATA	
LEGAL DESCRIPTION	WAL-MART ADDITION-NRH Block 1 Lot 1A)
ZONING	PD-36 (RETAIL DEVELOPMENT)
SITE ACREAGE	23.347 ACRES
ADDRESS	9101 N TARRANT PKWY



INSET A
SCALE: 1"=10'

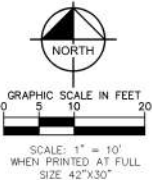
PARKING INFORMATION										
WALMART BUILDING INFO		AHJ PARKING REQUIRED	WALMART PARKING REQUIRED	REGULAR PARKING STALLS PROVIDED	OGP PARKING STALLS PROVIDED	ADA PARKING STALLS PROVIDED	CART CORRAL STALLS PROVIDED	TOTAL STALLS PROVIDED	TOTAL AHJ PARKING RATIO	TOTAL WALMART PARKING RATIO
WALMART	BUILDING SF ¹	SPACES	SPACES	SPACES ^{2,3}	SPACES ^{2,3}	SPACES ^{2,3}	SPACES ^{2,3}	SPACES ^{2,3}	SPACES ³	SPACES ³
EXISTING	206,913 SF	828 SPACES 1.00/250 SF	828 SPACES 4.00/1,000 SF	840	16	19	20	875	1.06/250 SF	4.23/1,000 SF
PROPOSED	206,913 SF	828 SPACES 1.00/250 SF	828 SPACES 4.00/1,000 SF	815	16	19	18	850	1.03/250 SF	4.11/1,000 SF

PARKING INFORMATION NOTES:

1. USABLE FLOOR AREA IS PER INFORMATION SHOWN IN THE WALMART STORE PLANNING PROJECT MANAGEMENT APPLICATION SYSTEM (LUCERNE).

2. EXISTING PARKING COUNTS ARE BASED ON ORIGINAL CONSTRUCTION PLANS AND A REVIEW OF AVAILABLE AERIAL PHOTOGRAPHS.

3. PARKING SPACES OCCUPIED BY CART CORRALS HAVE BEEN EXCLUDED FROM THE PARKING COUNTS AND PARKING RATIOS.



DESIGN / CODE SUMMARY

REDUCTION OF PARKING STALLS:
OPTION 1 - 27 STALLS

ENTITLEMENT SUMMARY:
TBD

DISCLAIMERS

* PRELIMINARY DESIGN CONCEPT ONLY

* WALMART CM PARTNERS HAVE NOT REVIEWED TO VERIFY/APPROVE AS OF 02/05/2024

SCOPE TRIP:	MM/DD/YYYY
PROJECTED ENTITLEMENT SUBMITTAL:	MM/DD/YYYY
PROJECTED ENTITLEMENT APPROVAL:	MM/DD/YYYY
PROJECTED PWO:	MM/DD/YYYY
PROJECTED PERMIT APPROVAL:	MM/DD/YYYY
POSSESSION DATE:	MM/DD/YYYY
CONSTRUCTION COMPLETE:	MM/DD/YYYY



02/05/2024

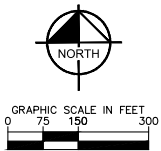
#3274
NORTH RICHLAND
HILLS, TX
Kimley»Horn



NOTES

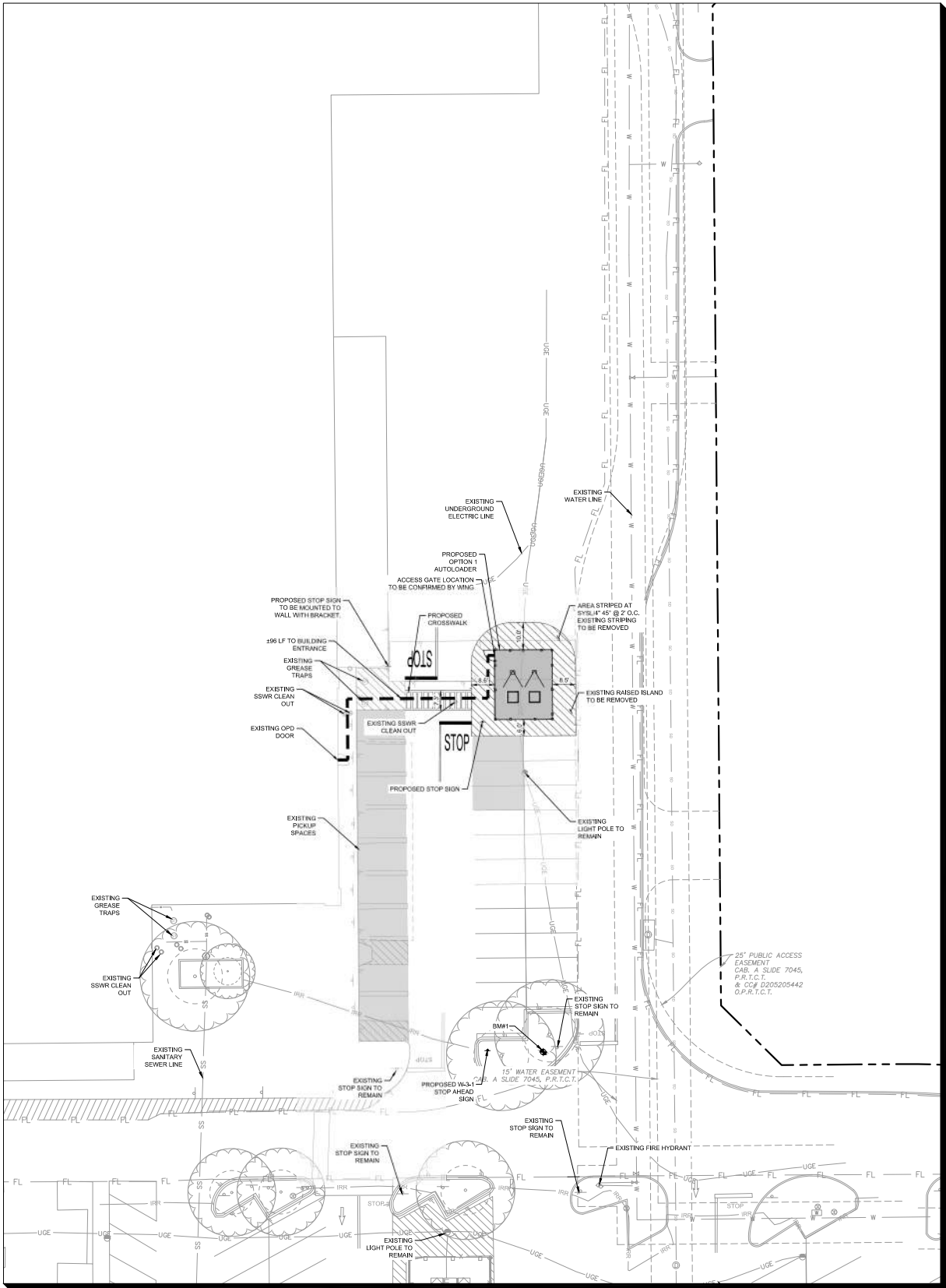
1. SITE PLAN IS BASED ON AERIAL AND ORIGINAL STORE PLANS.

SITE DATA TABLE	
GENERAL SITE DATA	
LEGAL DESCRIPTION	WAL-MART ADDITION LOT 1A1, BLOCK 1
ZONING	PD-36 - PLANNED DEVELOPMENT DISTRICT
SITE ACREAGE	24.67 ACRES
ADDRESS	9101 N TARRANT PKWY, NORTH RICHLAND HILLS, TX, 76182

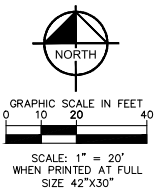


SITE ANALYSIS TABLE (EXISTING STORE)		
	EXISTING	PROPOSED
TOTAL BUILDING AREA¹	206,913 S.F.	206,913 S.F.
REQUIRED PARKING (PER CITY OF NRH)	828 SPACES	828 SPACES
REQUIRED PARKING RATIO (PER CITY OF NRH)	4.00/1000 S.F.	4.00/1000 S.F.
CUSTOMER AND ASSOCIATE PARKING	812 SPACES	812 SPACES
ACCESSIBLE PARKING	23	23
EV PARKING	0 SPACES	0 SPACES
PICKUP PARKING	12 SPACES	12 SPACES
CART CORRALS (NOT INCLUDED IN PARKING COUNTS BELOW)	13 CORRALS / 25 SPACES	13 CORRALS / 25 SPACES
PROPOSED TOTAL PARKING INCLUDING PICKUP STALLS	847 SPACES	847 SPACES
PROPOSED PARKING RATIO INCLUDING PICKUP STALLS	4.09/1,000 S.F.	4.09/1,000 S.F.

1. USABLE FLOOR AREA IS PER INFORMATION OBTAINED FROM LEXI BAUER OF GALLOWAY ON 01/29/2025.
2. PARKING SPACES OCCUPIED BY CART CORRALS AND WING HAVE BEEN EXCLUDED FROM THE PARKING COUNTS AND PARKING RATIOS.
3. PARKING AND STORAGE OF VEHICLES, EQUIPMENT, OR STAGING AREAS OUTSIDE OF THE FENCED AREA IS NOT ALLOWED
4. REQUIRED AHJ PARKING FROM NORTH RICHLAND HILLS BUILDING AND LAND USE REGULATIONS SECTION 118-470.
5. PARKING COUNT WAS OBTAINED BY A SITE VISIT CONDUCTED ON 02/25/2025



INSET A
SCALE: 1"=20'



DESIGN / CODE SUMMARY

REDUCTION OF PARKING STALLS:
OPTION 1 - 0 STALLS

ENTITLEMENT SUMMARY:
- PORTFOLIO HAS NOT BEEN
REVIEWED

DISCLAIMERS

* PRELIMINARY DESIGN CONCEPT ONLY

* WALMART CM PARTNERS HAVE NOT REVIEWED TO VERIFY/APPROVE AS OF 8/5/2025

SCOPE TRIP: MM/DD/YYYY

PROJECTED ENTITLEMENT SUBMITTAL: MM/DD/YYYY

PROJECTED ENTITLEMENT APPROVAL: MM/DD/YYYY

PROJECTED PWO: MM/DD/YYYY

PROJECTED PERMIT APPROVAL: MM/DD/YYYY

POSSESSION DATE: MM/DD/YYYY

CONSTRUCTION COMPLETE: MM/DD/YYYY



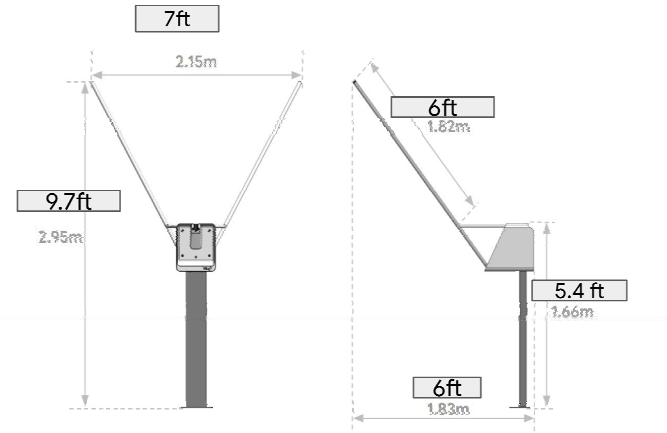
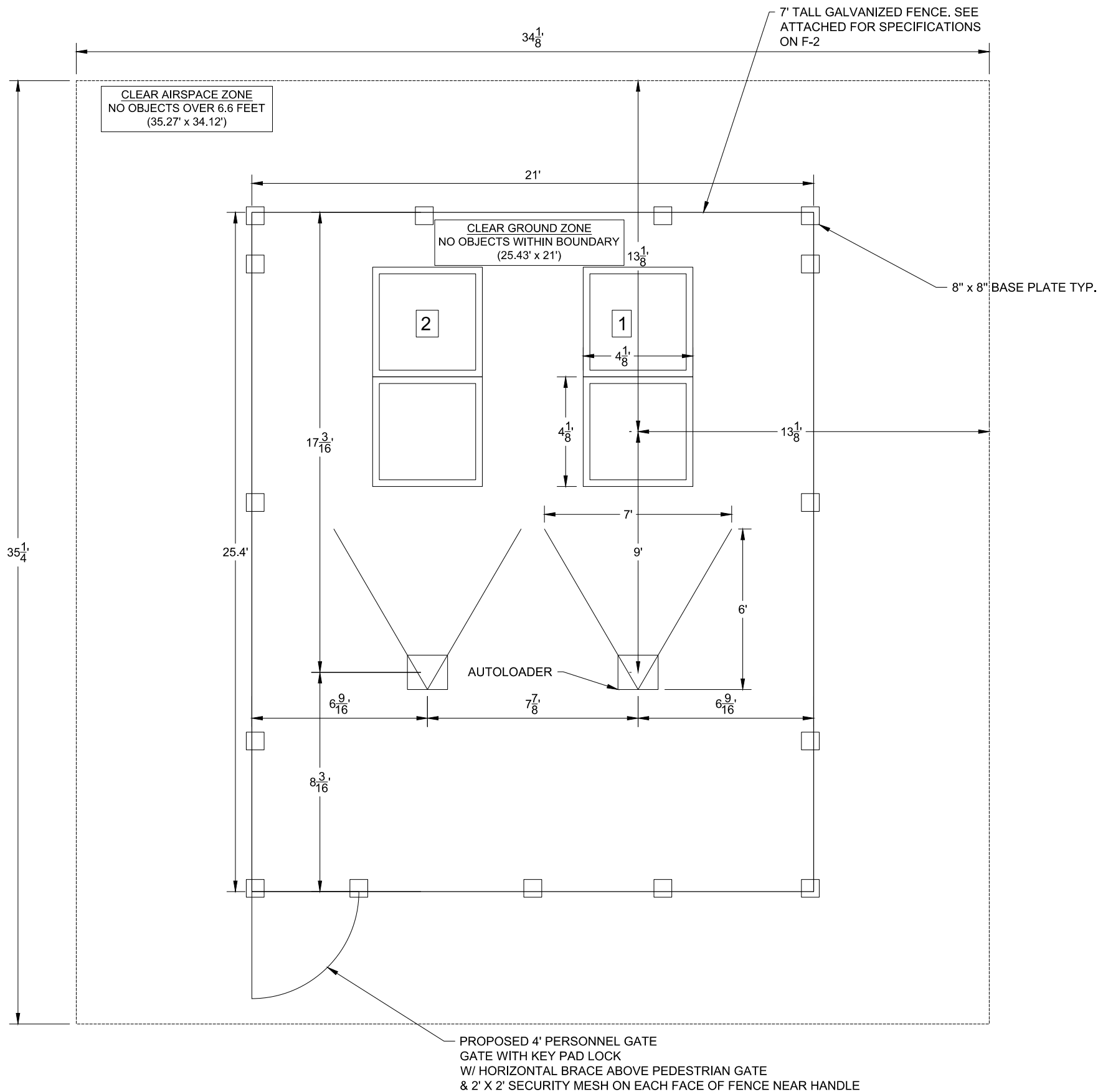
WINGS SITE PLAN CONCEPT

8/5/2025

#3274-1011
NORTH RICHLAND HILLS,
TX
Kimley»Horn

10/26/25
KIMLEY-HORN
DESIGNED BY
DRAWN BY
CHECKED BY
DATE
PROJECT
KHA PROJECT
XXXXXXXXXX
DATE
MAY 2025
SCALE
AS SHOWN
DESIGNED BY
CMD
DRAWN BY
CMD
CHECKED BY
JUT

This document, together with the concepts and designs presented herein, as an instrument of service, is intended only for the specific purpose and client for which it was prepared. Reuse of and improper reliance on this document without written authorization and adaptation by Kimley-Horn and Associates, Inc. shall be without liability to Kimley-Horn and Associates, Inc.



AUTOLOADER DETAIL
NTS

- NOTES:
1. CONVENTIONAL DIMENSIONING MAY BE USED.
 2. THIS IS A REDUCED DIMENSION DRAWING, NOT TO SCALE.
 3. ANY DEVIATION REQUIRES WING ENGINEER APPROVAL.
 4. CONTRACTOR TO VERIFY EXISTING SLAB MATERIAL PRIOR TO INSTALLATION.
 5. MINIMUM CONCRETE SLAB THICKNESS = 5".
 6. MINIMUM ANCHOR EDGE DISTANCE = 6".
 7. MINIMUM CONCRETE GRADE FOR SLAB = 3000 PSI.
 8. REFER DETAILS SHEETS AS SHOWN IN THIS PLAN.
CONTRACTOR REACH OUT TO MANUFACTURER FOR ALL DIMENSIONAL/DETAIL INFORMATION.

2

TYPICAL AUTOLOADER FENCE DETAIL N.T.S.

AUTOLOADER FENCE
DETAIL

SHEET NUMBER
F-1

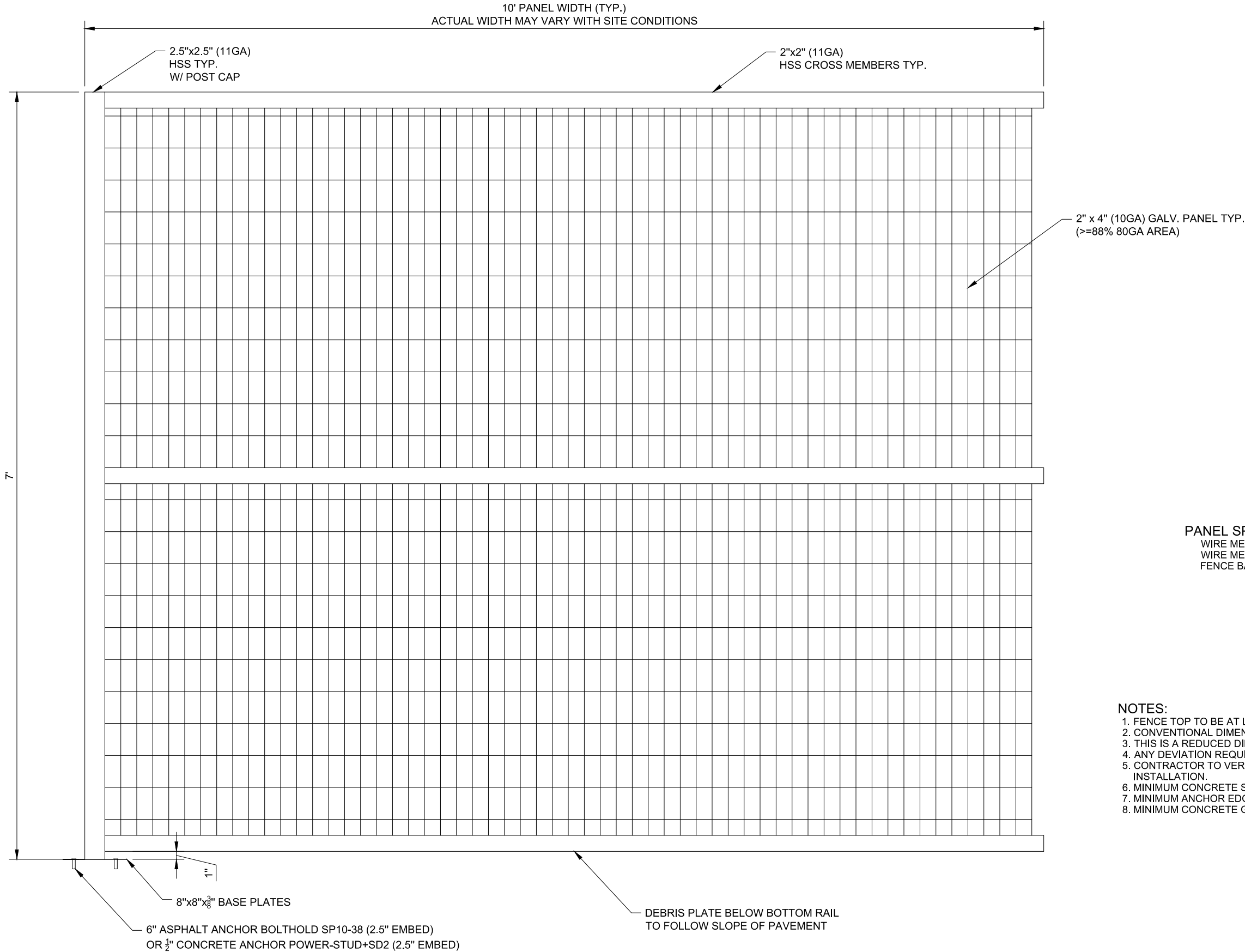
Kimley»Horn

© 2025 KIMLEY-HORN AND ASSOCIATES, INC.
260 EAST DAVIS STREET, SUITE 100, MC KINNEY, TX 75069
PHONE: 469-301-2580 FAX: 972-238-3820
WWW.KIMLEY-HORN.COM TX F-528

REVISIONS
No. BY DATE

10/26/25
KIMLEY-HORN
DESIGNED BY
PLOTTER
DWG NAME
2025 FENCE DETAIL.DWG
10/26/25 2:02 PM
KIMLEY-HORN
2025 FENCE DETAIL.DWG
10/26/25 2:02 PM

This document, together with the concepts and designs presented herein, is an instrument of service, is intended only for the specific purpose and client for which it was prepared. Reuse of and improper reliance on this document without written authorization and adaptation by Kimley-Horn and Associates, Inc. shall be without liability to Kimley-Horn and Associates, Inc.



PANEL SPECIFICATION:
WIRE MESH THICKNESS: 10GA
WIRE MESH PATTERN: 4"x2"
FENCE BASE PLATES: 4"x34"

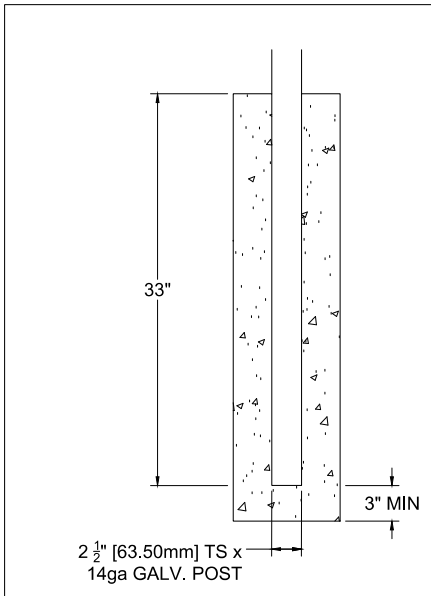
- NOTES:
1. FENCE TOP TO BE AT LEAST 2.2 METERS TALL (7.22 FEET).
 2. CONVENTIONAL DIMENSIONING MAY BE USED.
 3. THIS IS A REDUCED DIMENSION DRAWING, NOT TO SCALE.
 4. ANY DEVIATION REQUIRES WING ENGINEER APPROVAL.
 5. CONTRACTOR TO VERIFY EXISTING SLAB MATERIAL PRIOR TO INSTALLATION.
 6. MINIMUM CONCRETE SLAB THICKNESS = 5".
 7. MINIMUM ANCHOR EDGE DISTANCE = 6".
 8. MINIMUM CONCRETE GRADE FOR SLAB = 3000 PSI.

1 TYPICAL GALVANIZED FENCE DETAIL

N.T.S.

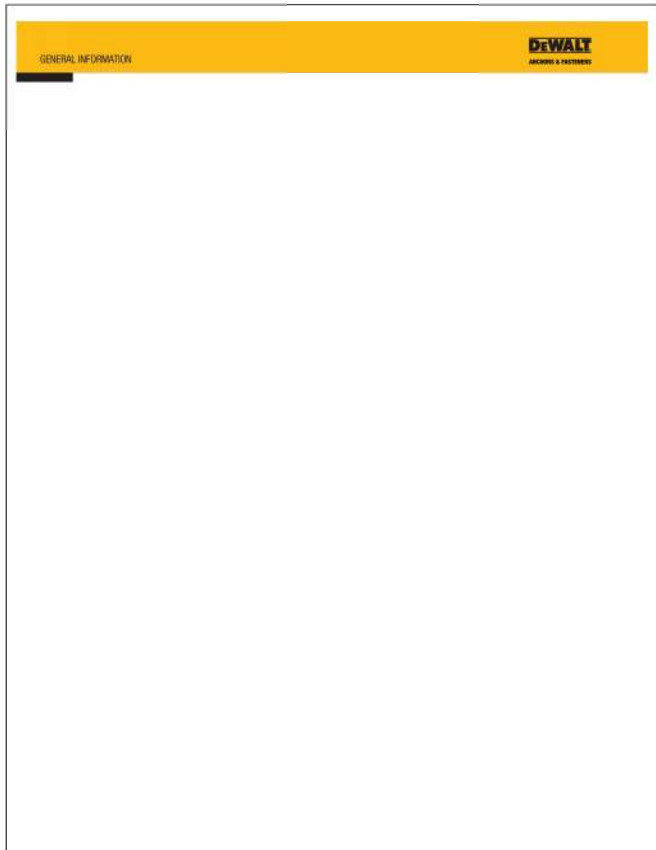
SHEET NUMBER F-2										AUTOLOADER FENCE DETAIL										<div><div></div><div></div><div></div><div></div><div></div><div></div><div></div><div></div><div></div><div></div><div></div><div></div><div></div><div></div><div></div><div></div><div></div><div></div><div></div><div></div><div></div><div></div><div></div><div></div><div></div><div></div><div></div><div></div><div></div><div></div><div></div><div></div><div></div><div></div><div></div><div></div><div></div><div></div><div></div><div></div><div></div><div></div><div></div><div></div><div></div><div></div><div></div><div></div><div></div><div></div><div></div><div></div><div></div><div></div><div></div><div></div><div></div><div></div><div></div><div></div><div></div><div></div><div></div><div></div><div></div><div></div><div></div><div></div><div></div><div></div><div></div><div></div><div></div><div></div><div></div><div></div><div></div><div></div><div></div><div></div><div></div><div></div><div></div><div></div><div></div><div></div><div></div><div></div><div></div><div></div><div></div><div></div><div></div><div></div><div></div><div></div><div></div><div></div><div></div><div></div><div></div><div></div><div></div><div></div><div></div><div></div><div></div><div></div><div></div><div></div><div></div><div></div><div></div><div></div><div></div><div></div><div></div><div></div><div></div><div></div><div></div><div></div><div></div><div></div><div></div><div></div><div></div><div></div><div></div><div></div><div></div><div></div><div></div><div></div><div></div><div></div><div></div><div></div><div></div><div></div><div></div><div></div><div></div><div></div><div></div><div></div><div></div><div></div><div></div><div></div><div></div><div></div><div></div><div></div><div></div><div></div><div></div><div></div><div></div><div></div><div></div><div></div><div></div><div></div><div></div><div></div><div></div><div></div><div></div><div></div><div></div><div></div><div></div><div></div><div></div><div></div><div></div><div></div><div></div><div></div><div></div><div></div><div></div><div></div><div></div><div></div><div></div><div></div><div></div><div></div><div></div><div></div><div></div><div></div><div></div><div></div><div></div><div></div><div></div><div></div><div></div><div></div><div></div><div></div><div></div><div></div><div></div><div></div><div></div><div></div><div></div><div></div><div></div><div></div><div></div><div></div><div></div><div></div><div></div><div></div><div></div><div></div><div></div><div></div><div></div><div></div><div></div><div></div><div></div><div></div><div></div><div></div><div></div><div></div><div></div><div></div><div></div><div></div><div></div><div></div><div></div><div></div><div></div><div></div><div></div><div></div><div></div><div></div><div></div><div></div><div></div><div></div><div></div><div></div><div></div><div></div><div></div><div></div><div></div><div></div><div></div><div></div><div></div><div></div><div></div><div></div><div></div><div></div><div></div><div></div><div></div><div></div><div></div><div></div><div></div><div></div><div></div><div></div><div></div><div></div><div></div><div></div><div></div><div></div><div></div><div></div><div></div><div></div><div></div><div></div><div></div><div></div><div></div><div></div><div></div><div></div><div></div><div></div><div></div><div></div><div></div><div></div><div></div><div></div><div></div><div></div><div></div><div></div><div></div><div></div><div></div><div></div><div></div><div></div><div></div><div></div><div></div><div></div><div></div><div></div><div></div><div></div><div></div><div></div><div></div><div></div><div></div><div></div><div></div><div></div><div></div><div></div><div></div><div></div><div></div><div></div><div></div><div></div><div></div><div></div><div></div><div></div><div></div><div></div><div></div><div></div><div></div><div></div><div></div><div></div><div></div><div></div><div></div><div></div><div></div><div></div><div></div><div></div><div></div><div></div><div></div><div></div><div></div><div></div><div></div><div></div><div></div><div></div><div></div><div></div><div></div><div></div><div></div><div></div><div></div><div></div><div></div><div></div><div></div><div></div><div></div><div></div><div></div><div></div><div></div><div></div><div></div><div></div><div></div><div></div><div></div><div></div><div></div><div></div><div></div><div></div><div></div><div></div><div></div><div></div><div></div><div></div><div></div><div></div><div></div><div></div><div></div><div></div><div></div><div></div><div></div><div></div><div></div><div></div><div></div><div></div><div></div><div></div><div></div><div></div><div></div><div></div><div></div><div></div><div></div><div></div><div></div><div></div><div></div><div></div><div></div><div></div><div></div><div></div><div></div><div></div><div></div><div></div><div></div><div></div><div></div><div></div><div></div><div></div><div></div><div></div><div></div><div></div><div></div><div></div><div></div><div></div><div></div><div></div><div></div><div></div><div></div><div></div><div></div><div></div><div></div><div></div><div></div><div></div><div></div><div></div><div></div><div></div><div></div><div></div><div></div><div></div><div></div><div></div><div></div><div></div><div></div><div></div><div></div><div></div><div></div><div></div><div></div><div></div><div></div><div></div><div></div><div></div><div></div><div></div><div></div><div></div><div></div><div></div><div></div><div></div><div></div><div></div><div></div><div></div><div></div><div></div><div></div><div></div><div></div><div></div><div></div><div></div><div></div><div></div><div></div><div></div><div></div><div></div><div></div><div></div><div></div><div></div><div></div><div></div><div></div><div></div><div></div><div></div><div></div><div></div><div></div><div></div><div></div><div></div><div></div><div></div><div></div><div></div><div></div><div></div><div></div><div></div><div></div><div></div><div></div><div></div><div></div><div></div><div></div><div></div><div></div><div></div><div></div><div></div><div></div><div></div><div></div><div></div><div></div><div></div><div></div><div></div><div></div><div></div><div></div><div></div><div></div><div></div><div></div><div></div><div></div><div></div><div></div><div></div><div></div><div></div><div></div><div></div><div></div><div></div><div></div><div></div><div></div><div></div><div></div><div></div><div></div><div></div><div></div><div></div><div></div><div></div><div></div><div></div><div></div><div></div><div></div><div></div><div></div><div></div><div></div><div></div><div></div><div></div><div></div><div></div><div></div><div></div><div></div><div></div><div></div><div></div><div></div><div></div><div></div><div></div><div></div><div></div><div></div><div></div><div></div><div></div><div></div><div></div><div></div><div></div><div></div><div></div><div></div><div></div><div></div><div></div><div></div><div></div><div></div><div></div><div></div><div></div><div></div><div></div><div></div><div></div><div></div><div></div><div></div><div></div><div></div><div></div><div></div><div></div><div></div><div></div><div></div><div></div><div></div><div></div><div></div><div></div><div></div><div></div><div></div><div></div><div></div><div></div><div></div><div></div><div></div><div></div><div></div><div></div><div></div><div></div><div></div><div></div><div></div><div></div><div></div><div></div><div></div><div></div><div></div><div></div><div></div><div></div><div></div><div></div><div></div><div></div><div></div><div></div><div></div><div></div><div></div><div></div><div></div><div></div><div></div><div></div><div></div><div></div><div></div><div></div><div></div><div></div><div></div><div></div><div></div><div></div><div></div><div></div><div></div><div></div><div></div><div></div><div></div><div></div><div></div><div></div><div></div><div></div><div></div><div></div><div></div><div></div><div></div><div></div><div></div><div></div><div></div><div></div><div></div><div></div><div></div><div></div><div></div><div></div><div></div><div></div><div></div><div></div><div></div><div></div><div></div><div></div><div></div><div></div><div></div><div></div><div></div><div></div><div></div><div></div><div></div><div></div><div></div><div></div><div></div><div></div><div></div><div></div><div></div><div></div><div></div><div></div><div></div><div></div><div></div><div></div><div></div><div></div><div></div><div></div><div></div><div></div><div></div><div></div><div></div><div></div><div></div><div></div><div></div><div></div><div></div><div></div><div></div><div></div><div></div><div></div><div></div><div></div><div></div><div></div><div></div><div></div><div></div><div></div><div></div><div></div><div></div><div></div><div></div><div></div><div></div><div></div><div></div><div></div><div></div><div></div><div></div><div></div><div></div><div></div><div></div><div></div><div></div><div></div><div></div><div></div><div></div><div></div><div></div><div></div><div></div><div></div><div></div><div></div><div></div><div></div><div></div><div></div><div></div><div></div><div></div><div></div><div></div><div></div><div></div><div></div><div></div><div></div><div></div><div></div><div></div><div></div><div></div><div></div><div></div><div></div><div></div><div></div><div></div><div></div><div></div><div></div><div></div><div></div><div></div><div></div><div></div><div></div><div></div><div></div><div></div><div></div><div></div><div></div><div></div><div></div><div></div><div></div><div></div><div></div><div></div><div></div><div></div><div></div><div></div><div></div><div></div><div></div><div></div><div></div><div></div><div></div><div></div><div></div><div></div><div></div><div></div><div></div><div></div><div></div><div></div><div></div><div></div><div></div><div></div><div></div><div></div><div></div><div></div><div></div><div></div><div></div><div></div><div></div><div></div><div></div><div></div><div></div><div></div><div></div><div></div><div></div><div></div><div></div><div></div><div></div><div></div><div></div><div></div><div></div><div></div><div></div><div></div><div></div><div></div><div></div><div></div><div></div><div></div><div></div><div></div><div></div><div></div><div></div><div></div><div></div><div></div><div></div><div></div><div></div><div></div><div></div><div></div><div></div><div></div><div></div><div></div><div></div><div></div><div></div><div></div><div></div><div></div><div></div><div></div><div></div><div></div><div></div><div></div><div></div><div></div><div></div><div></div><div></div><div></div><div></div><div></div><div></div><div></div><div></div><div></div><div></div><div></div><div></div><div></div><div></div><div></div><div></div><div></div><div></div><div></div><div></div><div></div><div></div><div></div><div></div><div></div><div></div><div></div><div></div><div></div><div></div><div></div><div></div><div></div><div></div><div></div><div></div><div></div><div></div><div></div><div></div><div></div><div></div><div></div><div></div><div></div><div></div><div></div><div></div><div></div><div></div><div></div><div></div><div></div><div></div><div></div><div></div><div></div><div></div><div></div><div></div><div></div><div></div><div></div><div></div><div></div><div></div><div></div><div></div><div></div><div></div><div></div><div></div><div></div><div></div><div></div><div></div><div></div><div></div><div></div><div></div><div></div><div></div><div></div><div></div><div></div><div></div><div></div><div></div><div></div><div></div><div></div><div></div><div></div><div></div><div></div><div></div><div></div><div></div><div></div><div></div><div></div><div></div><div></div><div></div><div></div><div></div><div></div><div></div><div></div><div></div><div></div><div></div><div></div><div></div><div></div><div></div><div></div><div></div><div></div><div></div><div></div><div></div><div></div><div></div><div></div><div></div><div></div><div></div><div></div><div></div><div></div><div></div><div></div><div></div><div></div><div></div><div></div><div></div><div></div><div></div><div></div><div></div><div></div><div></div><div></div><div></div><div></div><</div>									
---------------------	--	--	--	--	--	--	--	--	--	----------------------------	--	--	--	--	--	--	--	--	--	--	--	--	--	--	--	--	--	--	--

This document, together with the concepts and designs presented herein, as an instrument of service, is intended only for the specific purpose and client for which it was prepared. Reuse of said improper reliance on this document without written authorization and adaptation by Kimley-Horn and Associates, Inc. shall be without liability to Kimley-Horn and Associates, Inc.



CAST IN PLACE FENCE POST

TYP BASE PLATE



CONCRETE ANCHOR BOLT DETAILS

BOLTHOLD™ SP10-38 Asphalt Anchors Datasheet v4.1.6/24/2022	BOLTHOLD™ SP10-38 Asphalt Anchors Datasheet v4.1.6/24/2022														
Overview	About Asphalt														
<p>Asphalt Anchors Corp. has developed the <i>Bolthold™</i> family of anchors suitable for mounting objects to asphalt surfaces. The SP10-38 anchors body is 6" long and 3/8" in diameter, with a 3/8"-16 female thread. The anchor is bonded to the asphalt using special grouts such as our EPX3 or EPX3.</p> <p>The SP10-38 is recommended for most light applications, where pull forces are less than 1,500 lb. per anchor and shear forces are moderate (less than 1,000 lb. per anchor).</p>	<p>Asphalt is 20 times weaker than concrete. Asphalt flows under pressure over time and thus cannot support expansion-type wedge anchors that are so effective in concrete. Bolthold anchors use a stress-free bond between the anchors and the asphalt, assuring long term stability.</p> <p>The length of the anchor serves to increase the shear resistance by embedding the anchor in the compacted gravel below the asphalt layer.</p>														
Description	Installation														
<p>The SP10-38 is constructed from a thick-walled tube. The bottom is flared and sealed to act as a wedge when pushing the anchor into the ground. A welded spiral along the length of the anchor provides a strong bond with the grout.</p> <p>The top of the anchor incorporates a large washer with an internal 3/8" female thread. The washer prevents the anchor from dropping below the surface.</p> <p>The standard SP10 is made of zinc plated steel, with 20-hour salt spray rating. An all-stainless-steel version is available. Each anchor is preinstalled with a 1" long grade 5 hex bolt and a 1" washer.</p>	<p>The installation requires drilling a 3/4", 6" deep hole into the asphalt and the gravel below it. The hole is then filled with grout and the anchor is dropped in. The anchor is ready for use in 15-45 minutes depending on the grout and ambient temperature. Below 45°F use our EPX3 resin grout.</p> <p>Always consult the latest online installation instructions (https://aac.fi/ly/Guide) before installing these anchors. This comprehensive installation manual is updated regularly to reflect the availability of grouts, new installation techniques and user feedback.</p>														
Force Rating	<table border="1"> <tr> <td>Set Carton weight</td><td>2.5 lb. / 1.14 Kg</td></tr> <tr> <td>Set Carton Volume</td><td>0.001 CBM</td></tr> <tr> <td>Number of anchors per Master</td><td>54</td></tr> <tr> <td>Master Carton dimensions, mm</td><td>200 x 340 x 191</td></tr> <tr> <td>Master Carton dimensions, inch</td><td>7.8 x 13.4 x 7.5</td></tr> <tr> <td>Master Carton Gross Weight</td><td>20 lb. / 9 kg</td></tr> <tr> <td>Master carton Volume</td><td>0.013 CBM</td></tr> </table>	Set Carton weight	2.5 lb. / 1.14 Kg	Set Carton Volume	0.001 CBM	Number of anchors per Master	54	Master Carton dimensions, mm	200 x 340 x 191	Master Carton dimensions, inch	7.8 x 13.4 x 7.5	Master Carton Gross Weight	20 lb. / 9 kg	Master carton Volume	0.013 CBM
Set Carton weight	2.5 lb. / 1.14 Kg														
Set Carton Volume	0.001 CBM														
Number of anchors per Master	54														
Master Carton dimensions, mm	200 x 340 x 191														
Master Carton dimensions, inch	7.8 x 13.4 x 7.5														
Master Carton Gross Weight	20 lb. / 9 kg														
Master carton Volume	0.013 CBM														
<p>The resistance of the installed anchors to extraction depends on the nature of the asphalt and the gravel below it. The SP10-38 is pulled at 1,500 lb.(6.7kN) when installed with the EPX3 or EPX3 grouts [see sec 3]. At ground level, the anchor can resist 1,000 lb. of shear force. The anchor is rated for 200 in-lb. rotary torque; this torque is exerted when tightening the attaching bolt.</p> <p>To find out if an anchor is suitable for your application, the safe way is to make a test installation. You will be able to leave the anchors in place after the test without the need to remove them as they are flush with the roadway surface.</p>	<p>Tariffs</p> <p>The SP10-38 are shipped under schedule 55, HTS code (export) 7318.19.0000</p>														
<p>Note 1: When installing anchors close together, derate the pull strength of additional anchors by 6% for every 1 inch less than 12". For example, 4 SP10 arranged 4" apart will resist a total pull force of 5,800 lb. $(1,500 \times 4) \times 0.94$ (52% = 5,800lb). Use our online calculator (https://aac.fi/GroupCalc) to arrive at the total pull resistance for a group of anchors. The calculator also takes into consideration the thickness of the asphalt layer.</p>	<p>Links</p> <p>Installation Manual Prices and Discounts</p>														
<div>  <div> 10 Ridge Rd, West Orange, NJ 07052 USA email: marketing@asphaltanchors.com </div> <div> Tel: 1.973.669.8214 Fax: 1.973.669.5161 WEB: www.asphaltanchors.com </div> </div>	<div>  <div> 10 Ridge Rd, West Orange, NJ 07052 USA email: marketing@asphaltanchors.com </div> <div> Tel: 1.973.669.8214 Fax: 1.973.669.5161 WEB: www.asphaltanchors.com </div> </div>														

ASPHALT ANCHOR BOLT DETAILS

[illegible]