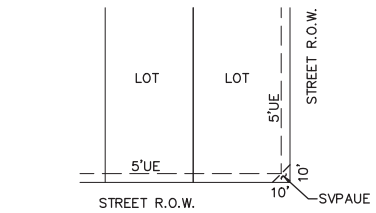
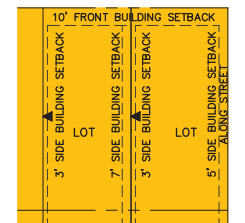




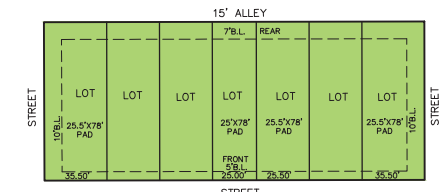
NOTE:  
NO OVERHEAD STRUCTURES WITHIN  
5' OF ADJACENT STRUCTURES.  
STREET R.O.W.



TYPICAL CORNER CLIP  
SIGHT VISIBILITY, PUBLIC ACCESS, &  
UTILITY EASEMENT DETAIL  
N.T.S.



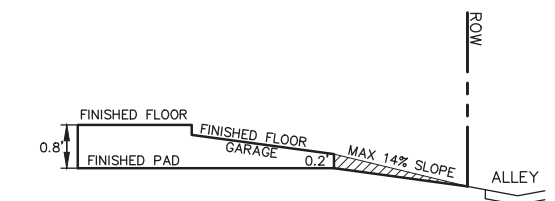
TYPICAL GARDEN  
LOT DETAIL  
N.T.S.



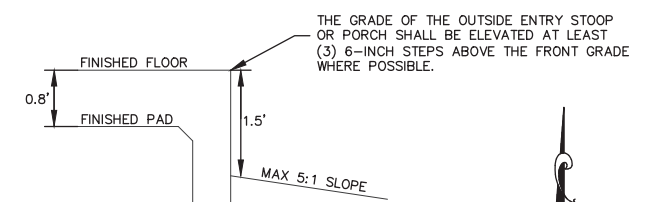
TYPICAL TOWNHOME  
LOT DETAIL  
N.T.S.

**LEGEND**

- PROPOSED STORM INLET
- IRREGULAR PAD WITH CLIPS
- 9 UNITS GARDEN (35'x93' TYPICAL PAD)
- 15 UNITS GARDEN (35'x98' TYPICAL PAD)
- 49 UNITS COTTAGE (25'x78' TYPICAL PAD)
- 56 UNITS TOWNHOME (25'x78' TYPICAL PAD)
- 129 UNITS



DRIVEWAY DETAIL  
N.T.S.



FRONT DROP BEAM DETAIL  
N.T.S.



**BENCHMARKS**

- SQUARE CUT FOUND IN CENTER OF CURB INLET LOCATED ON THE SOUTH SIDE OF MID-CITIES BOULEVARD APPROXIMATELY 350 FEET WEST OF ICE HOUSE DRIVE. ELEVATION = 606.11
- SQUARE CUT FOUND IN CENTER OF CURB INLET LOCATED ON THE SOUTH SIDE OF ICE HOUSE DRIVE APPROXIMATELY 300 FEET EAST OF BRIDGE STREET. ELEVATION = 614.44
- P.K. NAIL WITH SHINER LOCATED IN CONCRETE TRAIL LOCATED ON THE SOUTH SIDE OF BRIDGE STREET APPROXIMATELY 450 FEET WEST OF PARKER BOULEVARD. ELEVATION = 599.27

NO.	REVISIONS DURING CONSTRUCTION	BY	DATE	NO.	SUBMITTALS	DATE

This document is released for the purpose of interim review under the authority of Joshua A. Luke, P.E. 103636 on 8/23/2019. It is not to be used for construction or permitting purposes.

**JBI PARTNERS**  
2121 Midway Road  
Suite 300  
Carrollton, Texas 75006  
972.248.7676  
TBPE No. F-438  
TBPLS No. 10076000

**PAD MAP**

**THE HOMETOWN CANAL DISTRICT, PHASE 6**  
CITY OF NORTH RICHLAND HILLS, TARRANT COUNTY, TEXAS

PROJECT NO. **ARC039**  
SHEET NO. **1 OF 1**