



CRITICAL RESPONSE GROUP
America's Common Operating Picture™

Critical Response Group, Inc., proudly proposes a mapping solution born from lessons learned by US Special Operation Forces (USSOF) and successfully transitioned for use by domestic public safety professionals. Our simple but sophisticated communication tool, called a Collaborative Response Graphic® (CRG®), is usable under stress – regardless of safety discipline – to coordinate an emergency response inside and outside of a building.



Each floor of a building gets a “Micro” CRG to coordinate response inside a building.

CRGs are standardized, site-specific and geo-rectified common operating pictures that combine facility floor plans, high resolution imagery and a gridded overlay together into one map. They include the accurate labeling of key features like room numbers or descriptions, hallways, external doors, stairwells, key utility locations, and parking areas. CRGs can enhance response time and improve command and control during an incident.

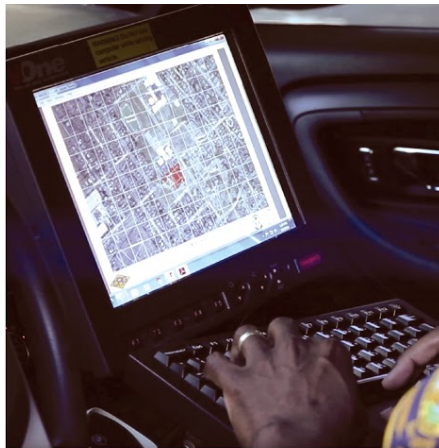


Each campus gets a “MACRO” CRG to coordinate response outside of a building

Our company’s origins are grounded in thousands of real-life direct-action raids conducted by USSOF over the past two decades and dozens of county-wide mapping deployments domestically over the past three years. Our management team’s mix of decorated and combat-tested USSOF officers and senior law enforcement executives has given us a unique perspective on building and implementing CRGs for domestic first responders, with a focus on CRGs being used when a crisis occurs. Our commitment to you is that CRGs will be easily accessible to those who need them and will increase the readiness level for public safety professionals during emergency situations.



Printed maps at an incident command post



Computer-Aided Dispatch Integration



Phone / Tablet Integration



Service Order

Critical Response Group



Order Date: June 16, 2021

From: The Critical Response Group
 PO Box 831
 Island Heights, NJ 08732
 Phone 732.779.4393
 CRGplans.com

To: Richard Curtis
 Community Services Sergeant
 Community Resources Division
 RCurtis@nrhtx.com
 (817) 427-7025

PRODUCT(s)	QTY	UNIT PRICE	TOTAL
Birdville High School •0 MACRO Collaborative Response Graphic (CRG), •2 Micro CRG(s) with GeoRelevant Integrated Floor Plans*	2	\$961.00	\$1,922.00
Richland High School •1 MACRO Collaborative Response Graphic (CRG), •2 Micro CRG(s) with GeoRelevant Integrated Floor Plans*	3	\$961.00	\$2,883.00
Birdville Center Technology and Advanced Learning •0 MACRO Collaborative Response Graphic (CRG), •1 Micro CRG(s) with GeoRelevant Integrated Floor Plans*	1	\$961.00	\$961.00
Haltom High School •1 MACRO Collaborative Response Graphic (CRG), •3 Micro CRG(s) with GeoRelevant Integrated Floor Plans*	4	\$961.00	\$3,844.00
Shannon High School •1 MACRO Collaborative Response Graphic (CRG), •1 Micro CRG(s) with GeoRelevant Integrated Floor Plans*	2	\$961.00	\$1,922.00
Haltom Middle School •1 MACRO Collaborative Response Graphic (CRG), •1 Micro CRG(s) with GeoRelevant Integrated Floor Plans*	2	\$961.00	\$1,922.00
North Oaks Middle School •1 MACRO Collaborative Response Graphic (CRG), •1 Micro CRG(s) with GeoRelevant Integrated Floor Plans*	2	\$961.00	\$1,922.00
North Richland Middle School •1 MACRO Collaborative Response Graphic (CRG), •2 Micro CRG(s) with GeoRelevant Integrated Floor Plans*	3	\$961.00	\$2,883.00
North Ridge Middle School •1 MACRO Collaborative Response Graphic (CRG), •1 Micro CRG(s) with GeoRelevant Integrated Floor Plans*	2	\$961.00	\$1,922.00
Richland Middle School •0 MACRO Collaborative Response Graphic (CRG), •1 Micro CRG(s) with GeoRelevant Integrated Floor Plans*	1	\$961.00	\$961.00
Smithfield Middle School •1 MACRO Collaborative Response Graphic (CRG),	2	\$961.00	\$1,922.00

•1 Micro CRG(s) with GeoRelevant Integrated Floor Plans*			
Watauga Middle School •1 MACRO Collaborative Response Graphic (CRG), •1 Micro CRG(s) with GeoRelevant Integrated Floor Plans*	2	\$961.00	\$1,922.00
Jack C. Binion Elementary •1 MACRO Collaborative Response Graphic (CRG), •2 Micro CRG(s) with GeoRelevant Integrated Floor Plans*	3	\$961.00	\$2,883.00
Birdville Elementary •0 MACRO Collaborative Response Graphic (CRG), •2 Micro CRG(s) with GeoRelevant Integrated Floor Plans*	2	\$961.00	\$1,922.00
Foster Village Elementary •1 MACRO Collaborative Response Graphic (CRG), •1 Micro CRG(s) with GeoRelevant Integrated Floor Plans*	2	\$961.00	\$1,922.00
W.T. Francisco Elementary •1 MACRO Collaborative Response Graphic (CRG), •1 Micro CRG(s) with GeoRelevant Integrated Floor Plans*	2	\$961.00	\$1,922.00
Green Valley Elementary •1 MACRO Collaborative Response Graphic (CRG), •1 Micro CRG(s) with GeoRelevant Integrated Floor Plans*	2	\$961.00	\$1,922.00
Grace E. Hardeman Elementary •0 MACRO Collaborative Response Graphic (CRG), •1 Micro CRG(s) with GeoRelevant Integrated Floor Plans*	1	\$961.00	\$961.00
Holiday Heights Elementary •0 MACRO Collaborative Response Graphic (CRG), •1 Micro CRG(s) with GeoRelevant Integrated Floor Plans*	1	\$961.00	\$961.00
Alliene Mullendore Elementary •1 MACRO Collaborative Response Graphic (CRG), •1 Micro CRG(s) with GeoRelevant Integrated Floor Plans*	2	\$961.00	\$1,922.00
North Ridge Elementary •0 MACRO Collaborative Response Graphic (CRG), •1 Micro CRG(s) with GeoRelevant Integrated Floor Plans*	1	\$961.00	\$961.00
W.A. Porter Elementary •1 MACRO Collaborative Response Graphic (CRG), •1 Micro CRG(s) with GeoRelevant Integrated Floor Plans*	2	\$961.00	\$1,922.00
Richland/Cheney Combined Elementary •1 MACRO Collaborative Response Graphic (CRG), •1 Micro CRG(s) with GeoRelevant Integrated Floor Plans*	2	\$961.00	\$1,922.00
David E. Smith Elementary •0 MACRO Collaborative Response Graphic (CRG), •1 Micro CRG(s) with GeoRelevant Integrated Floor Plans*	1	\$961.00	\$961.00
Smithfield Elementary •1 MACRO Collaborative Response Graphic (CRG), •1 Micro CRG(s) with GeoRelevant Integrated Floor Plans*	2	\$961.00	\$1,922.00
Snow Heights Elementary •0 MACRO Collaborative Response Graphic (CRG), •1 Micro CRG(s) with GeoRelevant Integrated Floor Plans*	1	\$961.00	\$961.00
John D. Spicer Elementary •1 MACRO Collaborative Response Graphic (CRG), •1 Micro CRG(s) with GeoRelevant Integrated Floor Plans*	2	\$961.00	\$1,922.00

O.H. Stowe Elementary •1 MACRO Collaborative Response Graphic (CRG), •2 Micro CRG(s) with GeoRelevant Integrated Floor Plans*	3	\$961.00	\$2,883.00
Academy at C.F. Thomas •1 MACRO Collaborative Response Graphic (CRG), •1 Micro CRG(s) with GeoRelevant Integrated Floor Plans*	2	\$961.00	\$1,922.00
Walker Creek Elementary •0 MACRO Collaborative Response Graphic (CRG), •2 Micro CRG(s) with GeoRelevant Integrated Floor Plans*	2	\$961.00	\$1,922.00
Watauga Elementary •1 MACRO Collaborative Response Graphic (CRG), •1 Micro CRG(s) with GeoRelevant Integrated Floor Plans*	2	\$961.00	\$1,922.00
West Birdville Elementary •1 MACRO Collaborative Response Graphic (CRG), •1 Micro CRG(s) with GeoRelevant Integrated Floor Plans*	2	\$961.00	\$1,922.00
<i>On-Site Walk-Through Fee (per building)</i>	32	\$300.00	\$9,600.00
CRG Annual Maintenance Plan for 3 years coverage	3	\$36,855.00	\$36,855.00
Total:			\$106,998.00
Payment Terms			
100% of project fee due upon delivery of Collaborative Response Graphics			\$106,998.00
Proposal valid for 90 days			

Service Order

Critical Response Group



Accepted and Agreed By:
North Richland Hills - Texas

Signature: _____

Printed Name: _____

Title: _____

Date: _____

The information and pricing contained in this service order are strictly confidential.

Service and Implementation Plan

Collaborative Response Graphics



Distribution to First Responders

Those who need your maps will have your maps

We ensure your local law enforcement and other approved first responders have access to current CRGs of your site every year. This includes your 911-Emergency Center and the SWAT unit that provide coverage of your area.



Training those who protect you

Keeping your CRGs accessible and usable by your first responders.

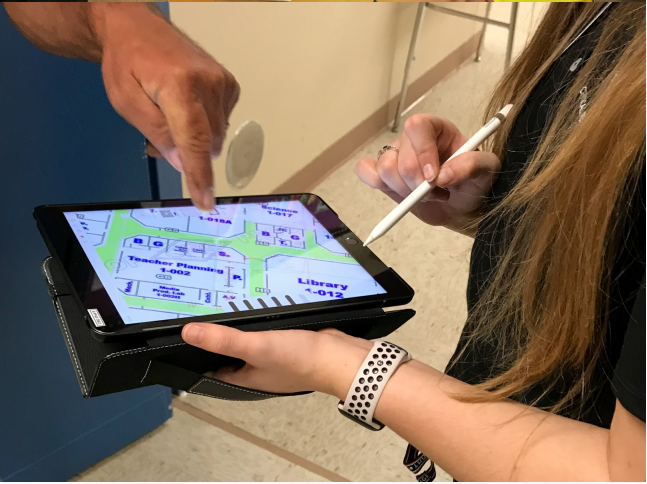
We provide annual training for your local first responders. We focus on making CRGs accessible and usable to improve planning, response, and incident command.



Support to Emergency Response Drills

Ensuring your CRGs are implemented correctly

We support our clients in table-top and emergency response drills to ensure the maps are used to improve planning, response, and incident command.



Annual Site Visits

Ensuring you have a living map of your building.

We conduct annual site visits and update CRGs to reflect the current layout of your buildings and grounds.