

SITE DATA TABLE	
Land Use	Starbucks
Gross Floor Area	2,346 sq. ft.
Parking Ratio	1 stall per 150 sq ft
Required	16
Total	29
Typ.	27
ADA	2
Lot Area	0.66 AC
Total Impervious Area	22,295 sf
Total Pervious Area	6,455 SF

NOTES BY SYMBOL

- ① FURNISH AND INSTALL WHEEL STOP(S) AS DETAILED
- ② PAINT STRIPE 4" WHITE CHEVRONS
- ③ CONSTRUCT NEW ADA PARKING SPACE AS DETAILED
- ④ FURNISH AND INSTALL NEW ADA SIGN AS DETAILED
- ⑤ CONSTRUCT NEW ADA RAMP AS DETAILED
- ⑥ FURNISH AND INSTALL 2. "INVERTED -U" BIKE RACKS AS DETAILED OR PER STARKBUCKS REQUEST
- ⑦ FURNISH AND INSTALL 'DO NOT ENTER' SIGN AS DETAILED
- ⑧ FURNISH AND INSTALL THANK YOU SIGN. REFER TO ARCHITECT
- ⑨ PAINT STRIPE STOP BAR AS DETAILED
- ⑩ FURNISH AND INSTALL 33 LF. OF 8' TALL WOOD SCREENING FENCE AS DETAILED. REFER TO ARCHITECT
- ⑪ PAINT STRIPE DIRECTIONAL ARROW AS SHOWN
- ⑫ PAINT STRIPE DO NOT ENTER SIGN AND 24" WIDE STOP BAR.
- ⑬ NEW MOP SIGN TO BE PROVIDED BY TENANT
- ⑭ FURNISH AND INSTALL PYLON SIGN TO BE PROVIDED BY TENANT
- ⑮ FURNISH AND INSTALL BOLLARDS.REFER TO ARCHITECT AND ELECTRIC SITE PLAN.TENANT TO PROVIDE ILLUMINATED BOLLARDS
- ⑯ FURNISH AND INSTALL PROTECTIVE NON-ILLUMINATED BOLLARDS
- ⑰ FURNISH AND INSTALL STOP SIGN AS DETAILED
- ⑱ FURNISH AND INSTALL TRUNCATED DOMES AS DETAILED
- ⑲ NEW LIGHT POLE. REFER TO ELECTRICAL

NRH CITY POINT STARBUCKS
LOT 3, BLOCK 1,
RICHLAND TERRACE ADDITION
7601 BLVD 26, NORTH RICHLAND HILLS, TEXAS 76180

NO.		REVISION		PROJECT		98-4061
				BY	DATE	
						DATE 10-24-2021
						DESIGNED AA
						DRAWN AA
						CHECKED WAT

HEET

C1.05

PLANT MATERIAL SCHEDULE					
SYM	KEY	QUAN.	COMMON NAME	BOTANICAL NAME	SPECIFICATIONS
TREES					
	CE	—	CEDAR ELM	Ulmus crassifolia	65 gal. container, 3" cal., 8' tall
	LO	—	LIVE OAK	Quercus virginiana	65 gal. container, 3" cal., 8' tall
	SRO	—	SHUMARD RED OAK	Quercus shumardi	65 gal. container, 3" cal., 8' tall
SHRUBS					
☼	BEY	1	BRIGHT EDGE YUCCA	Yucca filamentosa 'Bright Edge'	5 gallon, 36" on center.
☼	DBH	16	DWARF BURFORD HOLLY	Ilex cuneata "Burford nano"	5 gallon, 36" on center.
☼	DTS	13	DWARF TEXAS SAGE	Leucophyllum frutescens "Silverado"	5 gallon, 36" on center.
☼	EE	23	ELAEAGNUS EBBINGEI	Elaeagnus x ebbingei	5 gal. 36" oc, unless noted
☼	KA	11	KALIDOSCOPE ABELIA	Abelia spp. "Kaldioscope"	5 gallon, 36" on center.
☼	RY	14	RED YUCCA	Hesperaloe parviflora	5 gallon, 48" on center.
ORNAMENTAL GRASSES, GROUNDCOVER AND PERENNIALS					
☼	DPG	10	DWARF PAMPUS GRASS	Cortaderia pumila	5 gallon, 42" on center.
☼	LMG	18	LINDHEIMER'S MUHLY GRASS	Muhlenbergia lindheimeri	3 gallon, 36" on center.
☼	HDFG	14	HAMEL'S DWARF FOXTAIL GRASS	Pennisetum daeucurum	1 gallon, 24" on center.
☼	LAN	6	LANTANA	Lantana spp.	2 gallon, 30" on center.
☼	GL	0	GIANT LIRIOPE	Liriope gigantea	1 gallon, 18" on center.
TURF GRASS					
☼	BG		BERMUDA GRASS	Cynodon dactylon	solid sod

WASHED RIVER ROCK - "WRR" - 1-11/2" dia 4" thick over weed barrier fabric.

1. ALL LANDSCAPE REQUIREMENTS AND UNDERGROUND IRRIGATION SYSTEM WILL CONFORM TO THE LOCAL CITY ORDINANCE AND DESIGN STANDARDS AND ANY REQUIREMENTS OF THE STATE OF TEXAS THAT ARE APPLICABLE.
2. NO PLANT MATERIAL SHALL BE PLANTED UNTIL THE LANDSCAPE IRRIGATION SYSTEM HAS BEEN INSTALLED AND IS OPERATING WITH 100% COVERAGE OF PROPOSED LANDSCAPE AREAS.
3. THE LANDSCAPE CONTRACTOR SHALL BE RESPONSIBLE FOR MAKING HIMSELF FAMILIAR WITH ALL UNDERGROUND UTILITIES, PIPES, CABLES, STRUCTURES AND LINE RUNS.
4. THE CONTRACTOR IS RESPONSIBLE FOR VERIFICATION OF ALL QUANTITIES BASED ON THE DRAWINGS AND ACTUALLY FIELD MEASUREMENTS. THE CONTRACTOR HAS BEEN PROVIDED AS A CONVENIENCE ONLY TO THE OWNER(S) AND SHALL NOT BE CONSIDERED ABSOLUTE. CONTRACTOR SHALL FOLLOW DESIGN INTENT.
5. NOTIFY THE OWNER OF ANY DISCREPANCIES THAT ARISE DURING THE CONSTRUCTION PERIOD FIRST IN WRITING. SUCH DISCREPANCIES KNOWN TO OWNER WILL RESULT IN THE CONTRACTOR'S LIABILITY TO REDO WORK AS NECESSARY TO ACHIEVE THE DESIGN INTENT.
6. PROTECT EXISTING VEGETATION, EQUIPMENT, STRUCTURES, UTILITIES, AND OTHER IMPROVEMENTS AT THE PROJECT SITE AND ADJACENT PROPERTIES, EXCEPT THOSE INDICATED TO BE REMOVED OR ALTERED. ALL AREAS DISTURBED BY DEMOLITION AND CONSTRUCTION ACTIVITIES SHALL BE REPAIRED AND RESTORED TO ORIGINAL PRE-CONSTRUCTION CONDITION INCLUDING: PAYMENTS, LANDSCAPE AREAS, TERRAIN AND LIGHTING.
7. PROVIDE MEASURES AS REQUIRED TO PREVENT EROSION AND DISCHARGE OF SOIL-BEARING RUNOFF AND ARBORIC DUST TO UNDISTURBED AREAS AND ADJACENT PROPERTIES, DIRECTLY OR INDIRECTLY, DURING CONSTRUCTION.
8. ALL PROPOSED SUBSTITUTIONS MUST BE APPROVED BY THE LANDSCAPE ARCHITECT PRIOR INSTALLATION.
9. NOTIFY THE LANDSCAPE ARCHITECT IF LAYOUT OF TREES, BEDS AND/OR PLANTS REQUIRE ALTERATION FROM THE LANDSCAPE PLAN. NOTIFICATION WILL BE REQUIRED PRIOR TO ANY CHANGES TO THE LAYOUT.
10. TREES SHALL BE HANDLED BY ROOT BALLS ONLY. DO NOT DAMAGE BALL, TRUNK, OR LOOSEST TRUNK FROM BALL. TREE TRUNKS ARE TO BE PLANTED STRAIGHT AND MAY BE REQUIRED BY THE OWNER AND/OR THE LANDSCAPE ARCHITECT TO BE STAKED.
11. ALL TREES TO BE UNIFORM BY SPECIES WITH STRAIGHT TRUNKS AND MATCHING CHARACTER AND BRANCHING STRUCTURE.
12. ALL TREE LOCATIONS SHALL BE APPROVED BY THE OWNER OR OWNER'S REPRESENTATIVE PRIOR TO PLANTING.
13. STAKE NEW PLANTED TREES FOR A MINIMUM PERIOD OF ONE YEAR. NOTE SPECIFIED "ARBORCUT SYSTEM" STAKING DETAIL, SHEET L-2, IS BIODEGRADABLE AND CAN REMAIN IN PLACE. THE STAKING METHOD SHALL SECURELY ANCHOR THE ROOT BALL, WHILE ALLOWING THE TRUNK AND CROWN TO MOVE NATURALLY. THE SYSTEM SHALL USE MATERIALS AND METHODS THAT PENETRATE OR DAMAGE THE ROOT BALL ABOVE GRADE STAKING SYSTEMS SUCH AS "T" POSTS WITH WIRES, HOSES, STRAPS, OR CUT WIRES WRAPPED AROUND THE TREE TRUNK SHALL NOT BE ALLOWED UNLESS APPROVED BY THE LANDSCAPE ARCHITECT.
14. FINAL LOCATIONS OF PLANT MATERIAL IS SUBJECT FOR REVIEW AND APPROVAL BY OWNER PRIOR TO PLANTING.
15. PROVIDE POSITIVE DRAINAGE THROUGHOUT THE PROJECT AREA. NO PONDING OR STANDING WATER IS ACCEPTABLE.
16. CONTRACTOR SHALL PROVIDE A MINIMUM 2% SLOPE AWAY FROM ALL BUILDINGS.
17. AT NO TIME WILL ANY PLANT MATERIAL BE ALLOWED TO SETTLE BEYOND THE TOP OF THE ROOT FLARE OR POITED SOIL LINE. SHOULD PLANT MATERIAL SETTLE, THE PLANTS WILL BE REPLANTED AT THE PROPER HEIGHT AND/OR REPLACED IF NECESSARY AT THE CONTRACTOR'S COST.
18. ALL BED AREAS SHALL BE SEPARATED FROM TURF AREAS USING 1/8" x 4" STEEL EDGING, PAINTED GREEN. ALL ENDS OF STEEL EDGING SHALL HAVE A RADIUS OF 45 DEGREES. ALL SHARP EDGES, HAND FLANG MAY BE REQUIRED TO ACHIEVE A SMOOTH EDGE.
19. TRIM STEEL EDGING AT A 45 DEGREE ANGLE WHEN EDGING INTERSECTS WITH A WALK OR CURB. DO NOT INSTALL EDGING ALONG CURBS OR WALKS.
20. ALL LANDSCAPE BEDS, NOT COVERED WITH AGGREGATE, SHALL RECEIVE A FOUR INCH (4") TOP DRESS LAYER OF 1/2" IN MAXIMUM HARDWOOD MULCH. ALL TREE WELLS, NOT COVERED WITH AGGREGATE, SHALL RECEIVE A THREE INCH (3") TOP DRESS LAYER OF SHREDDED HARDWOOD MULCH. DO NOT COVER ROOT COLLAR.
21. TOP OF MULCH SHALL BE 1/2" MINIMUM BELOW THE TOP OF WALKS AND CURBS.
22. TURF AREAS SHALL BE CLEAN OF DEBRIS AND RAKED (GRADED) SMOOTH PRIOR TO HYDROMORPH OR SOD INSTALLATION. LANDSCAPE CONTRACTOR TO RECEIVE GRADE WITHIN APPROX. 1/10th of INCH GRADE.
23. OWNER RESPONSIBLE TO PROVIDE ELECTRICAL SERVICE FOR THE IRRIGATION SYSTEM. CONTRACTOR LOCATES A HARDWARE OF 10 VOLTS AT MINIMUM FOR THE CONTROLLER.
24. ALL LANDSCAPE INCLUDING WITHIN THE VISIBILITY TRIANGLES SHALL COMPLY WITH THE VISIBILITY TRIANGLE REQUIREMENTS AS PER THE CITY STANDARDS.
25. ALL LIGHT POLES MAY NOT BE SHOWN ON THE PROJECT SITE OR ADJACENT PROPERTIES. IF A POLED LIGHT IS REQUIRED, THE CONTRACTOR SHALL CONTACT THE LANDSCAPE ARCHITECT, TO DETERMINE OPTIONS, PRIOR TO PLANTING.
26. ALL PLANTS AND TREES ARE TO BE PROVIDED BY THE AMERICAN ASSOCIATION OF NURSERYMEN AND TEXAS ASSOCIATION OF NURSERYMEN STANDARDS.
27. THE LANDSCAPE ARCHITECT RESERVES THE RIGHT TO REFUSE ANY LANDSCAPE MATERIAL ON SITE.

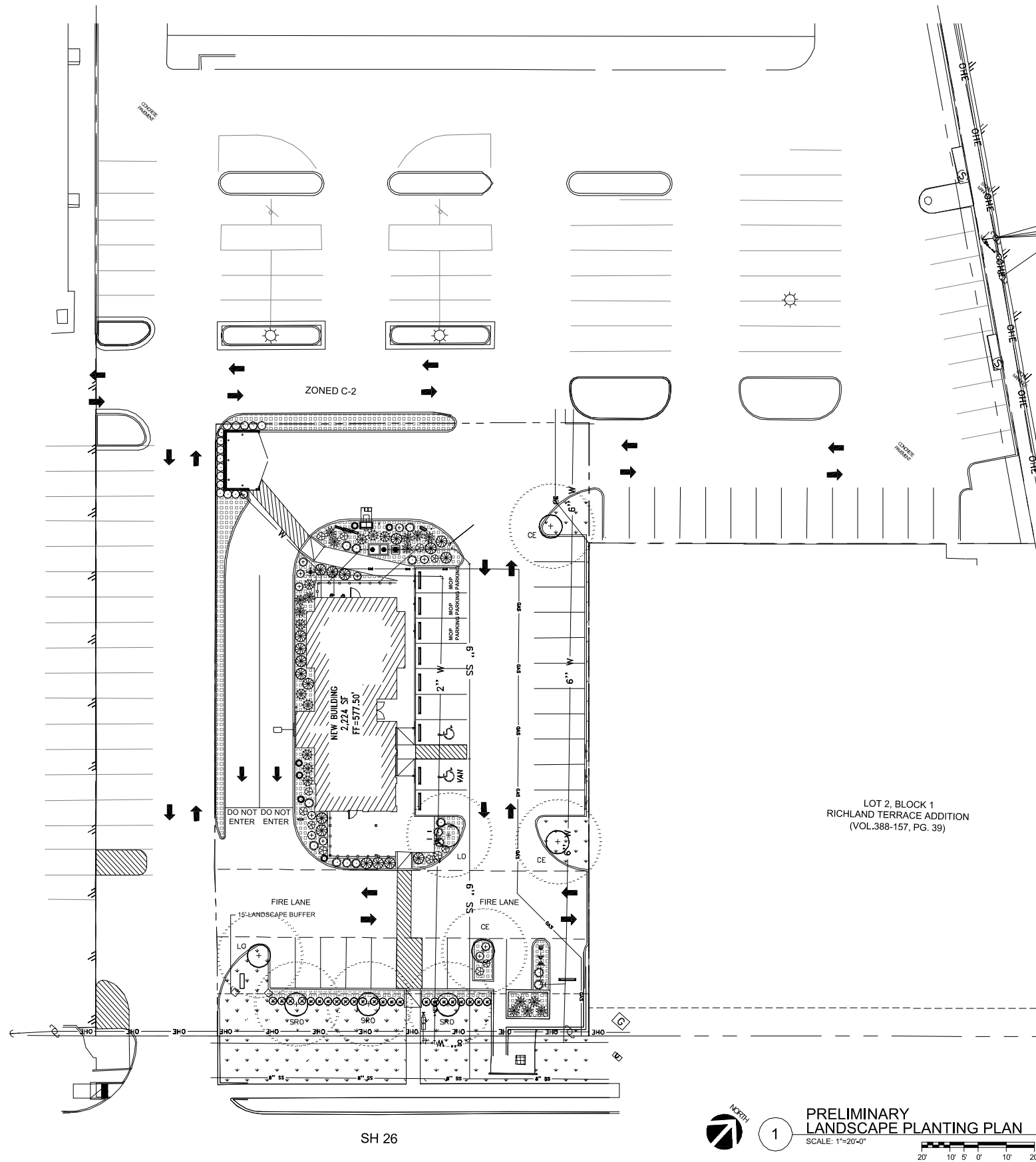
The Owner, tenant and/or their agent, thereof, shall be responsible for the maintenance of all landscaping. Landscaping shall be maintained in a neat and orderly manner at all times. This shall include mowing (of grass six (6) inches (15.24 cm) or higher), weeding, pruning, watering, fertilizing and other such activities common to the maintenance of landscaping. Landscaped areas shall be kept free of trash, litter, weeds and other debris. Landscaping shall be maintained in a healthy and growing condition as is appropriate for the season of the year. All irrigation heads shall be replaced with new or repaired heads. Plant materials which die shall be replaced with plant material of similar variety and size, within ninety (90) days. Trees with a trunk diameter in excess of three (3) inches (7.62 cm) shall be replaced with a tree of similar size and variety. Plant materials which die shall be replaced with ones of similar variety having a trunk diameter of no less than three inches (3") measured twenty-four inches (24") above the ground. A time extension may be granted if the contractor can provide a written explanation and supporting evidence is presented to indicate abnormal circumstances beyond the control of the owner or his agent; failure to maintain any landscaped area in compliance with this section shall result in the disallowed cost of the replacement of the affected occupancy associated with the occupancy of said areas.

REQUIRED SITE LANDSCAPING	15% OF TOTAL SITE TO BE LANDSCAPE AREA	
NEW STARBUCKS LOT: 28,820.22	REQUIRED	PROVIDED
	4,323	5,174 SF = 17.9%
REQUIRED LANDSCAPE SETBACK	MINIMUM 15 FT LANDSCAPE SETBACK	
	REQUIRED	PROVIDED
	15 FT	15 FT
REQUIRED STREET FRONTAGE TREES	1 TREE REQ'D PER EVERY 50 FT OF FRONTAGE	
	REQUIRED	PROVIDED
S.H. 26	132'/50' = 3 TREES	3 TREES
REQUIRED STREET FRONTAGE SHRUBS	1 SHRUB REQ'D PER EVERY 5 FT OF FRONTAGE	
	REQUIRED	PROVIDED
S.H. 26	132'/5' = 27 SHRUBS	27 SHRUBS
REQUIRED PARKING LOT LANDSCAPING	5% LANDSCAPE AREA REQUIRED	
	REQUIRED	PROVIDED
	10,300 SF x 5% = 515 SF	1,122 SF
BUFFER YARD REGULATION	15 FT OF LANDSCAPE BETWEEN DISTRICTS	
	REQUIRED	PROVIDED
	NA	NA
BUFFER YARD TREES	1 TREE PER 30 LF, 40% EVERGREEN	
	REQUIRED	PROVIDED
	NA	NA

STARBUCKS NORTH RICHLAND HILLS
7601 BOULEVARD 26
NORTH RICHLAND HILLS, TX

LANDSCAPE PLAN

PROJECT NO: 2k24-13
SHEET TITLE: LANDSCAPE PLAN SCHEDULES, NOTES
SHEET NO: L-1 OF X L SHEETS





SEE ATTACHED SIGNAGE PACKAGE
FOR ADDITIONAL INFORMATION
ON SIGNAGE

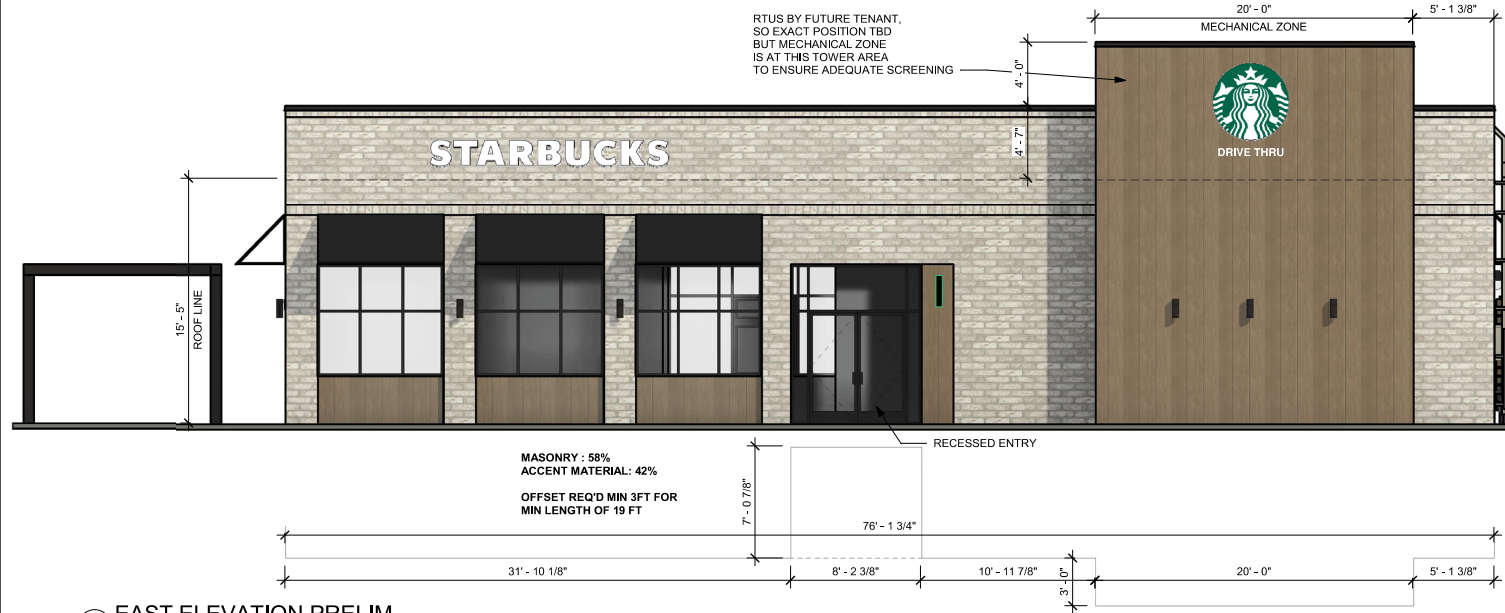


ACME
HERITAGE
CAPE COD



NEWTECH WOOD
PERUVIAN
TEAK

RTUS BY FUTURE TENANT,
SO EXACT POSITION TBD
BUT MECHANICAL ZONE
IS AT THIS TOWER AREA
TO ENSURE ADEQUATE SCREENING



① EAST ELEVATION PRELIM

Scale: 3/16" = 1'-0"



② WEST ELEVATION PRELIM

Scale: 3/16" = 1'-0"



③ SOUTH ELEVATION PRELIM

Scale: 3/16" = 1'-0"



④ NORTH ELEVATION PRELIM

Scale: 3/16" = 1'-0"

THIS DOCUMENT IS RELEASED
FOR THE PURPOSE OF REVIEW
UNDER THE AUTHORITY OF
MSPIRE DESIGN, LLC. IT IS NOT
TO BE USED FOR
CONSTRUCTION, BIDDING OR
PERMIT PURPOSES.

10-16-24

Thomas A Pirtle III
AIA NCARB

Architect
1308 Meadowview Drive
Kennedale Texas 76060

CONTRACTOR SHALL VERIFY ALL CONDITIONS
AND DIMENSIONS AT THE JOB SITE AND
NOTIFY THE ARCHITECT OF ANY DIMENSIONAL
ERRORS, OMISSIONS OR DISCREPANCIES
BEFORE BEGINNING OR FABRICATING ANY
WORK. DO NOT SCALE DRAWINGS.

CJ REAL ESTATE, LLC
3825 Camp Bowie Blvd
Fort Worth, TX 76107
817.665.2343 (o)

REVISION SCHEDULE			
REV	DATE	BY	DESCRIPTIONS

PROJECT NAME:
STARBUCKS SHELL BUILDING

PROJECT ADDRESS:
26 & CITY POINT
NORTH RICHLAND HILLS, TX

PROJECT #: 24-0010
ORIGINAL ISSUE: 10-16-24
DATE: MH
PRODUCTION: TP
DESIGNER:
CHECKED BY:

SHEET TITLE:
DESIGN REVIEW
ELEVATIONS

SCALE: 3/16" = 1'-0"

SHEET NUMBER:
PR-101

THIS DOCUMENT IS RELEASED FOR THE PURPOSE OF REVIEW UNDER THE AUTHORITY OF MSPIRE DESIGN, LLC. IT IS NOT TO BE USED FOR CONSTRUCTION, BIDDING OR PERMIT PURPOSES.

10-16-24

Thomas A Pirtle III
AIA NCARB

Architect
1308 Meadowview Drive
Kennedale Texas 76060

CONTRACTOR SHALL VERIFY ALL CONDITIONS AND DIMENSIONS AT THE JOB SITE AND NOTIFY THE ARCHITECT OF ANY DIMENSIONAL ERRORS, OMISSIONS OR DISCREPANCIES BEFORE BEGINNING OR FABRICATING ANY WORK. DO NOT SCALE DRAWINGS.

CJ REAL ESTATE, LLC
3825 Camp Bowie Blvd
Fort Worth, TX 76107
817.665.2343 (o)

REVISION SCHEDULE			
REV	DATE	BY	DESCRIPTIONS

PROJECT NAME:
STARBUCKS SHELL BUILDING

PROJECT ADDRESS:
26 & CITY POINT
NORTH RICHLAND HILLS, TX

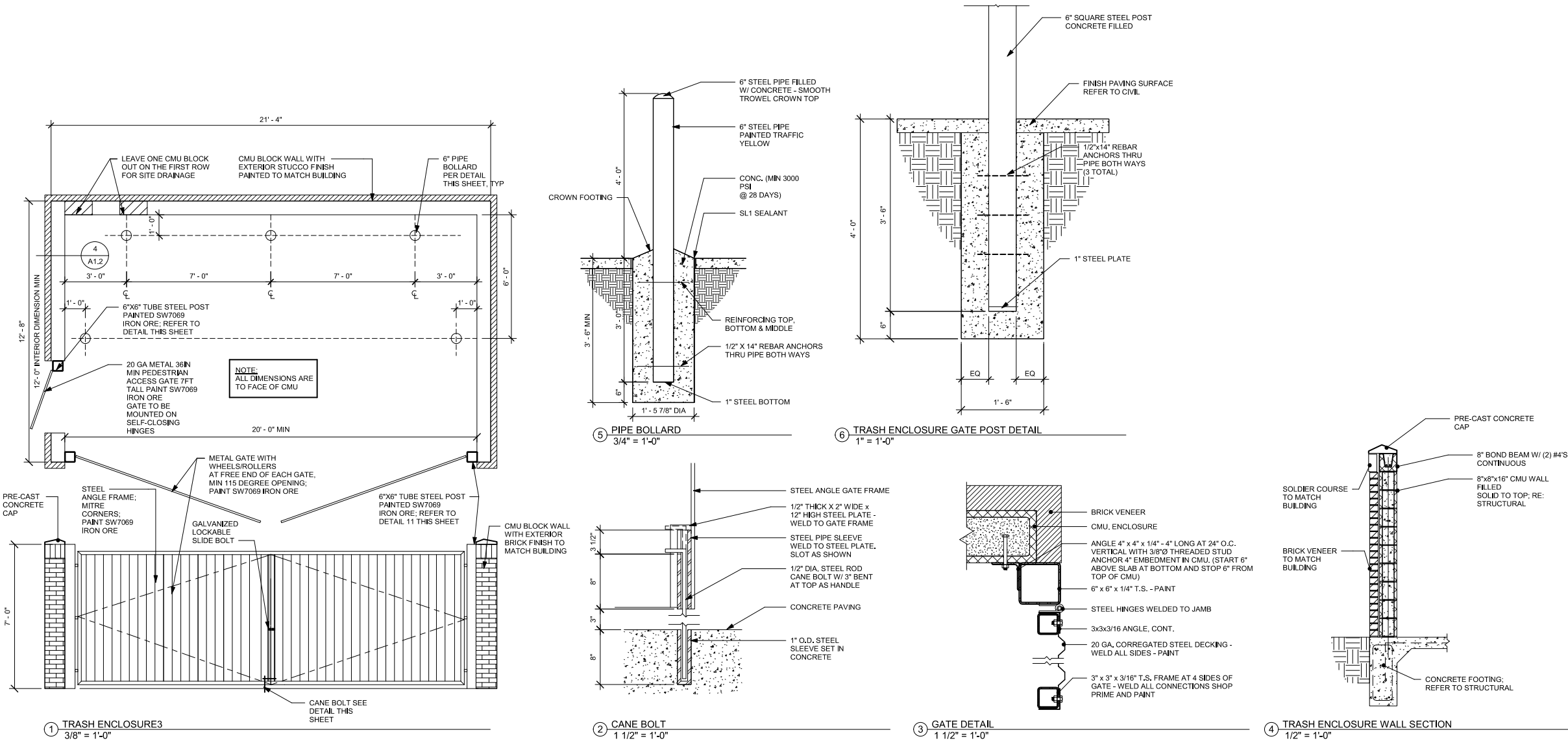
PROJECT #: 24-0010
ORIGINAL ISSUE 10-16-24
DATE: MH
PRODUCTION
DESIGNED BY: TP
CHECKED BY:

SHEET TITLE:
SITE DETAILS

SCALE: As indicated

SHEET NUMBER:
A1.2

12/9/2024 3:01:31 PM C:\Users\missy\OneDrive - MSPire Design\MSPire Design\Projects\CJ Real Estate\24-0010 SBUX City Point NRH\Drawings\SBUX Shell City Point NRH - New Protc.rvt



THIS DOCUMENT IS RELEASED
FOR THE PURPOSE OF REVIEW
UNDER THE AUTHORITY OF
MSPIRE DESIGN, LLC. IT IS NOT
TO BE USED FOR
CONSTRUCTION, BIDDING OR
PERMIT PURPOSES.

8-29-24

Thomas A Pirtle III
AIA NCARB

Architect
1308 Meadowview Drive
Kennedale Texas 76060

CONTRACTOR SHALL VERIFY ALL CONDITIONS
AND DIMENSIONS AT THE JOB SITE AND
NOTIFY THE ARCHITECT OF ANY DIMENSIONAL
ERRORS, OMISSIONS OR DISCREPANCIES
BEFORE BEGINNING OR FABRICATING ANY
WORK. DO NOT SCALE DRAWINGS.

CJ REAL ESTATE, LLC
3825 Camp Bowie Blvd
Fort Worth, TX 76107
817.665.2343 (o)

REVISION SCHEDULE			
REV	DATE	BY	DESCRIPTIONS

PROJECT NAME:
STARBUCKS SHELL BUILDING

PROJECT ADDRESS:
**26 & CITY POINT
NORTH RICHLAND HILLS, TX**

PROJECT #:
24-0010

ORIGINAL ISSUE
8-29-24

DATE:
PRODUCTION
DESIGNER
CHECKED BY:
MH
TP

SHEET TITLE:
**DESIGN REVIEW
ELEVATIONS**

SCALE:
3/16" = 1'-0"

SHEET NUMBER:
PR-101



ACME
HERITAGE
CAPE COD



STUCCO
SW7507
STONE LION



NEWTECH WOOD
PERUVIAN
TEAK

2 EAST ELEVATION PRELIM
Scale: 3/16" = 1'-0"

MASONRY : 85%
FIBER CEMENT PANELS: 15%

4 SOUTH ELEVATION PRELIM
Scale: 3/16" = 1'-0"

MASONRY : 71%
FIBER CEMENT PANELS: 29%

1 WEST ELEVATION PRELIM
Scale: 3/16" = 1'-0"

MASONRY : 97%
FIBER CEMENT PANELS: 3%

3 NORTH ELEVATION PRELIM
Scale: 3/16" = 1'-0"

MASONRY : 93%
FIBER CEMENT PANELS: 7%

9/30/2024 6:19:06 PM C:\Users\missy\OneDrive - MSpire Design\MSpire Design\Projects\CJ Real Estate\24-0010 SBUX City Point NRH\Drawings\SBUX Shell City Point NRH - New Proto.rvt

S/F EXTERIOR TRIMLESS FLEX FACE SIREN WALL SIGN

Qty. 2

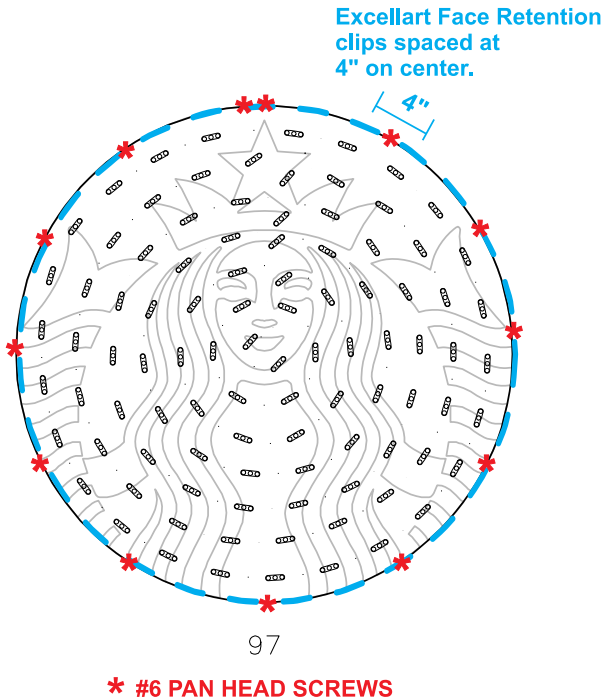
SBC-S22606-72-FF

A



1 FRONT VIEW

Scale: 1/2" = 1' (11x17 Paper)

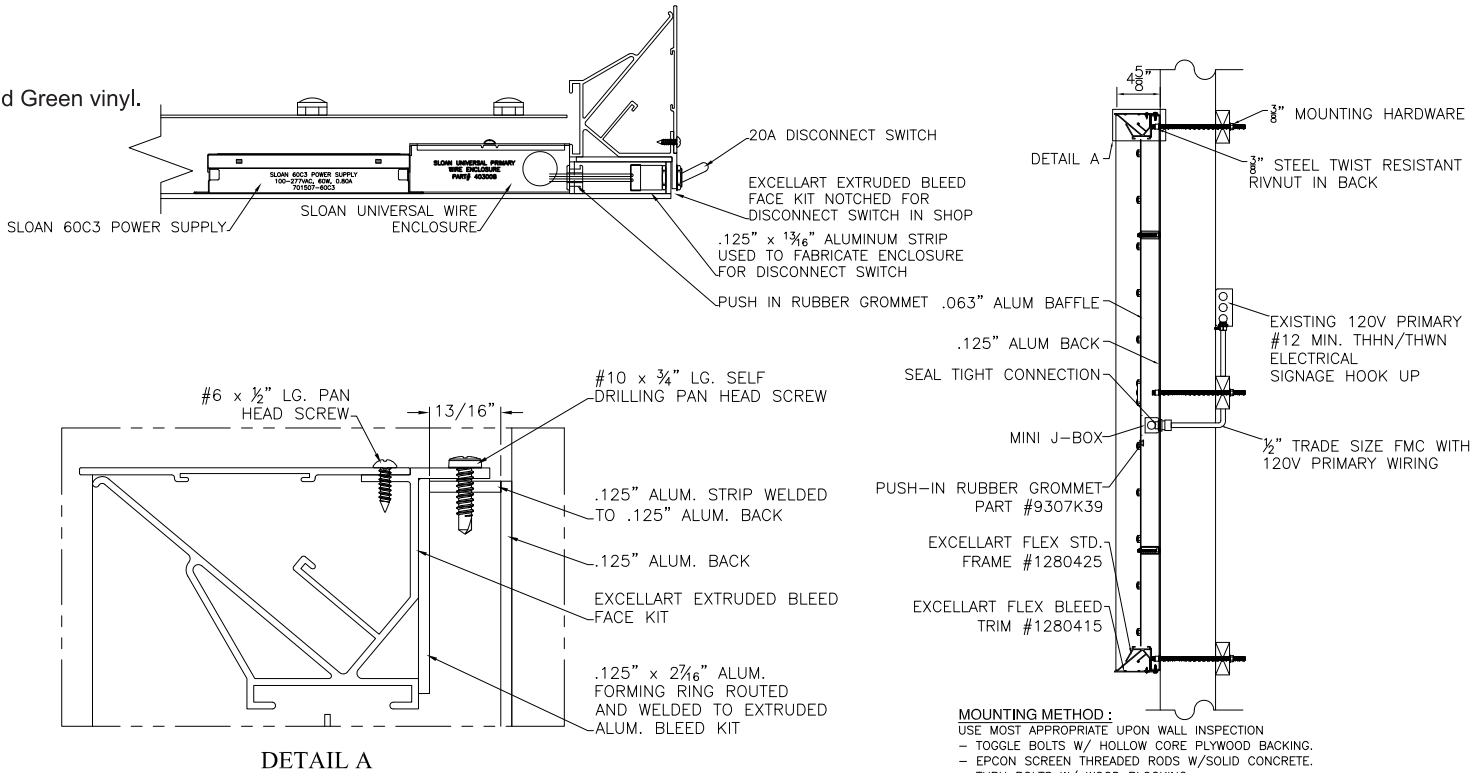


- 1) ACTUAL CHANNEL LETTER POPULATION AND PRODUCT PLACEMENT MAY VARY FROM THIS LAYOUT
- 2) PRISM ENLIGHTEN WHITE 6500K LAID OUT AT 1.5 MODULES PER FOOT, 5.0" ON CENTER
- 3) EACH 60W3 POWER SUPPLY CAN RUN UP TO 72 PRISM ENLIGHTEN WHITE 6500K MODULES
- 4) LAYOUT BASED ON A 2.5" CAN DEPTH
- 5) DIMENSIONS ARE IN INCHES UNLESS STATED OTHERWISE
- 6) 701269-6WEJ1-MB WATTS PER MODULE: .75
- 7) PRIMARY SYSTEM POWER: 90.94 WATTS
- 8) LED MODULE POWER USAGE (secondary): 72.75 WATTS

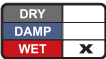
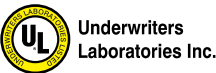
ESTIMATED PRODUCT B.O.M. PER SIGN:
97 Each Prism Enlighten White 6500K Modules – 65'
PN: 701269-6WEJ1-MB
2 Each 60C2 (Damp/Dry locations) or 60W3 (Wet location) 60W Power Supplies 12VDC
1 Each 100' Roll of Jacketed Cable

Specifications:

- A Single face internally illuminated Excellart EC-Flex Standard flex face cabinet with bleed trim cover.
- B White 3M 19 oz Panagraphics III Flex Faces with 3M 3630-126 Dark Emerald Green vinyl. Face retention clips spaced every 4".
- C Interior of cabinet painted reflective white and exterior painted satin black.
- D Internally illuminated with 6500K Sloan Prism Enlighten LEDs with remote power supply.
- E 1/4" drain holes located at the bottom of cabinet as required by UL 48 for Electric Signs.
- F Drain holes to be covered with drain hole covers to reduce light leaks.



COLOR LEGEND		
	PMS/PAINT	VINYL
	PMS 3425 C	3M 3630-126
	SATIN BLACK	NA
	PMS WHITE	NA

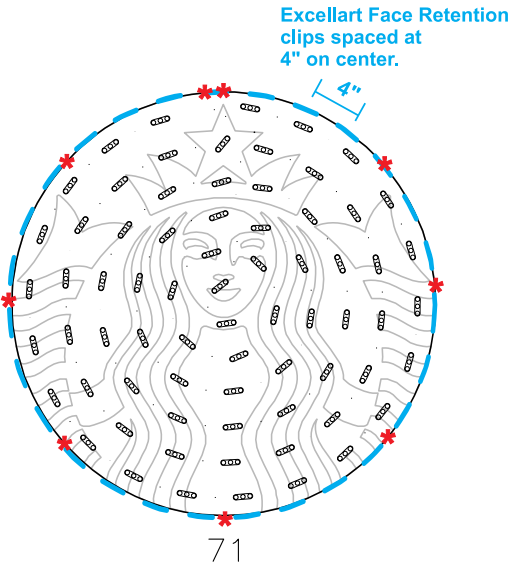


S/F EXTERIOR TRIMLESS FLEX FACE SIREN WALL SIGN

Qty. 1

SBC-S13164-60-FF

B



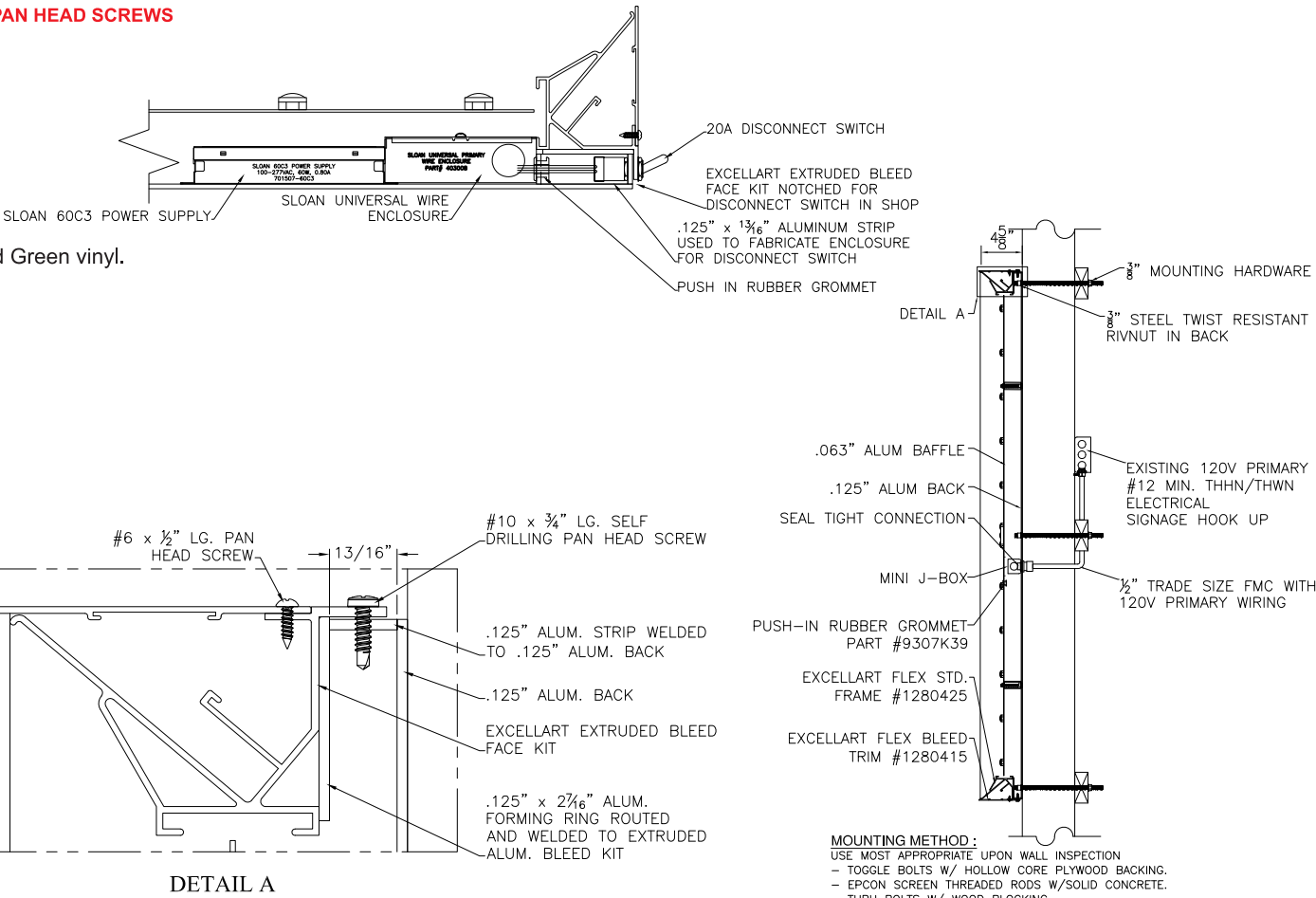
- 1) ACTUAL CHANNEL LETTER POPULATION AND PRODUCT PLACEMENT MAY VARY FROM THIS LAYOUT
- 2) PRISM ENLIGHTEN WHITE 6500K LAID OUT AT 1.5 MODULES PER FOOT, 5.0" ON CENTER
- 3) EACH 60W3 POWER SUPPLY CAN RUN UP TO 72 PRISM ENLIGHTEN WHITE 6500K MODULES
- 4) LAYOUT BASED ON A 2.5" CAN DEPTH
- 5) DIMENSIONS ARE IN INCHES UNLESS STATED OTHERWISE
- 6) 701269-6WEJ1-MB WATTS PER MODULE: .75
- 7) PRIMARY SYSTEM POWER: 66.56 WATTS
- 8) LED MODULE POWER USAGE (secondary): 53.25 WATTS

ESTIMATED PRODUCT B.O.M. PER SIGN:
71 Each Prism Enlighten White 6500K Modules - 48'
PN: 701269-6WEJ1-MB
1 Each 60C2 (Damp/Dry locations) or 60W3 (Wet location) 60W Power Supply 12VDC
1 Each 100' Roll of Jacketed Cable

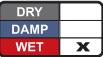
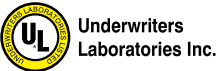
1 FRONT VIEW
Scale: 1/2" = 1' (11x17 Paper)

Specifications:

- A Single face internally illuminated Excellart EC-Flex Standard flex face cabinet with bleed trim cover.
- B White 3M 19 oz Panagraphics III Flex Faces with 3M 3630-126 Dark Emerald Green vinyl. Face retention clips spaced every 4".
- C Interior of cabinet painted reflective white and exterior painted satin black.
- D Internally illuminated with 6500K Sloan Prism Enlighten LEDs with remote power supply.
- E 1/4" drain holes located at the bottom of cabinet as required by UL 48 for Electric Signs.
- F Drain holes to be covered with drain hole covers to reduce light leaks.



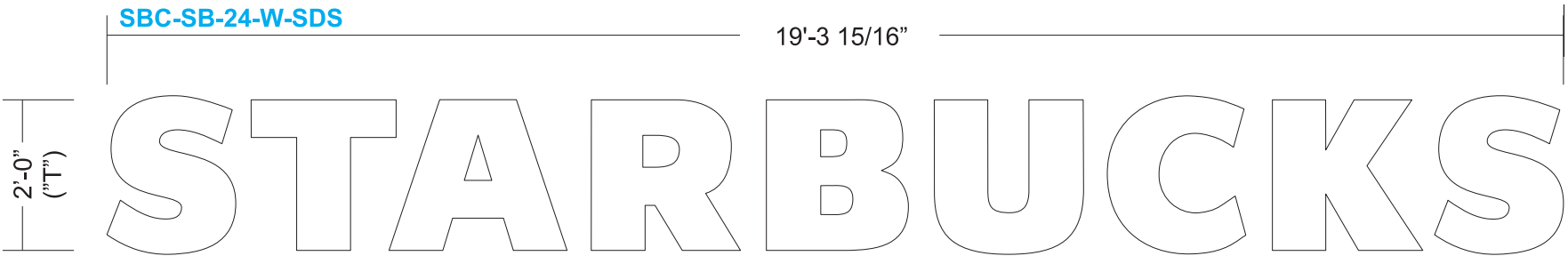
COLOR LEGEND		
	PMS/PAINT	VINYL
	PMS 3425 C	3M 3630-126
	SATIN BLACK	NA
	PMS WHITE	NA



TRIMLESS CHANNEL LETTERS - REMOTE

Qty. 1

C

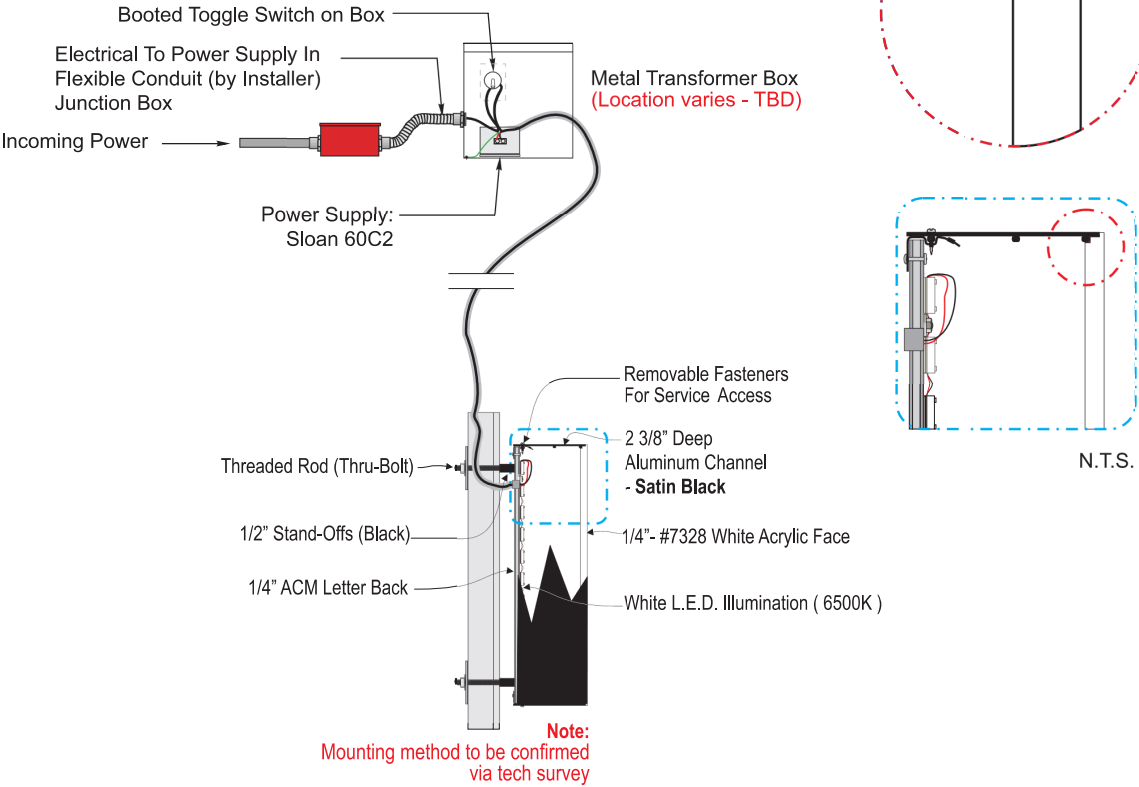


Front View

Scale: 1/2" = 1'-0" (11x17 Paper)

Specifications:

- A Internally illuminated SDS LetterForm trimless channel letter with returns painted **satín black**.
- B Green faces to be 1/4" 7328 gloss white acrylic with 3M 3630-126 Dark Emerald Green vinyl applied first surface. White faces to be 1/4" 7328 matte white acrylic
- C Internally illuminated letters with 6500K Sloan white LED mounted to 1/4" ACM backs
- D 1/4" drain holes located at the bottom of each letter as required by UL 48 for Electric Signs.
- E Drain holes to be covered with drain hole covers to reduce light leaks.



COLOR LEGEND		
	PMS/PAINT	VINYL
	PMS 3425 C	3M 3630-126
	SATIN BLACK	NA
	PMS WHITE	NA

SloanLED
Leaders in LED Technology
SloanLED.com Tel 805.676.3200
Toll-free 888.747.4LED Fax 805.676.3206

Underwriters Laboratories Inc.

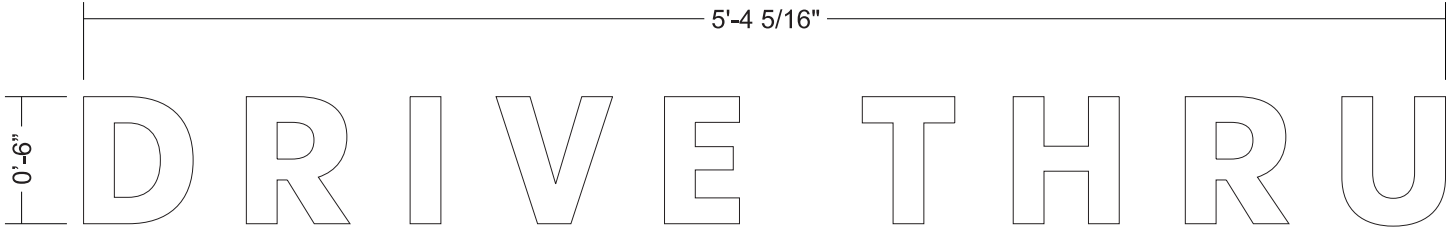




ILLUMINATED CHANNEL LETTERS - REMOTE

Qty.2 SBC-S23093-RCL-DT-W-6

D



Scale: 1 1/2" = 1' (11x17 paper)

2.68 SF

- New Illuminated Letterset
- Remote Wired
- Trim-less Drop In Face Construction
- Illuminated with LED.
- Letters are mounted flush to fascia

LED used only for 6" Letters



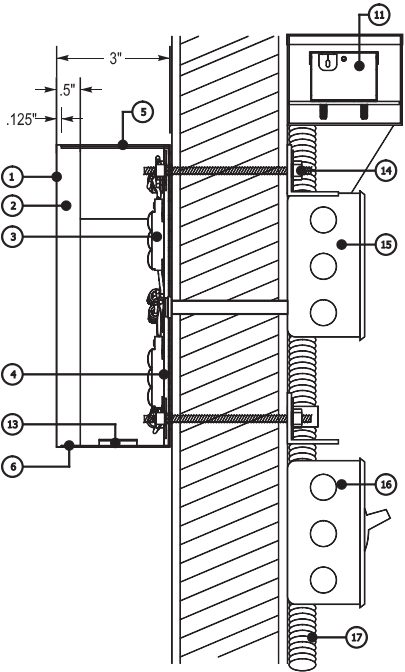
Sloan Prism12 Nano 6500k

Colors:

- Face to be #7328 White Acrylic
- Returns Painted Pantone 419 Black (satin finish)

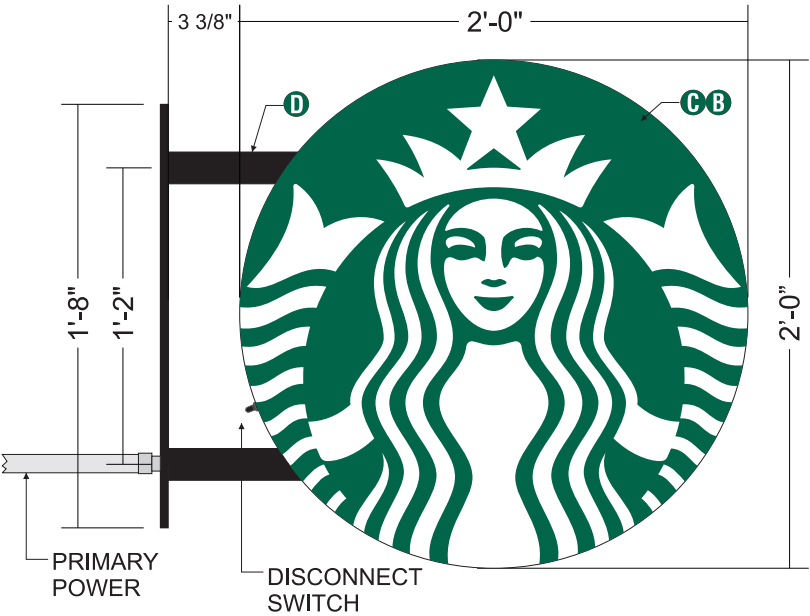
1	NA
2	acrylic face shoulder routed to fit inside returns
3	6500k white LED
4	3mm ACM back
5	.040 aluminum return
6	#4 1/4 undercut countersunk phillips flat head screw
7	NA
8	NA
9	NA
10	NA
11	power supply
12	NA
13	weep hole cover (under side painted black)
14	mounting varies upon wall condition and material
15	junction box
16	disconnect switch
17	primary power source

ELECTRICAL NOTES	
1.	All materials and fasteners meet 3004.4
2.	All electrical components are UL listed, labeled and approved.
3.	Sign grounded according to NEC 6007.7
4.	Signs manufactured and listed NEC 600.3 and marked per NEC 600.4.
5.	All branch circuits per NEC 600 .5(B).1 or (B).2.
6.	All Signs controlled by photocell or time clock per FBC 13-415. (ABC).1.4.
7.	One visible 20 amp disconnect per sign per circuit per NEC 600.6(A).1

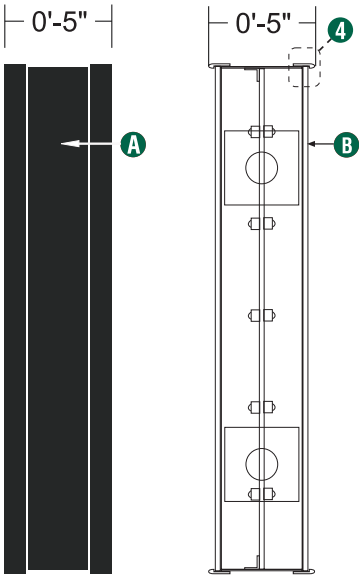


24" DIA. BLADE SIGN
Qty. 1 **SBC-S14100-SL**

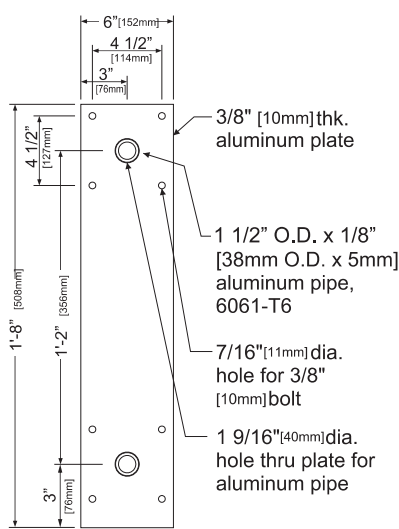
E



1 Front View
Scale: 1-1/2" = 1' (11x 17 Paper)



2 Side View

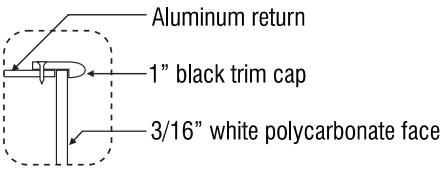


3 Mounting Plate

SIGN SPECIFICATIONS:

Cabinet:





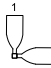
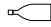
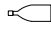
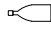

- A** .063" [2mm] aluminum returns painted black to match RAL 7021M.
- 1" Black trim cap
- B** .177" [5mm] white polycarbonate with first surface vinyl film to match PMS 3425.
Interior aluminum surfaces of sign cabinet to be painted white with Lacryl Starbrite.
- C** Graphic elements internally illuminated using Sloan Prism Enlighten LED system. LEDs to be mounted to center welded baffle painted white
All electrical components to be removable for service.
LED Power supply mounted to internal baffle.
- D** Support structure will be all welded aluminum pipe and plate
all support components painted black to match RAL 7021M



4 Enlarged Detail

COLOR LEGEND		
	PMS/PAINT	VINYL
	PMS 3425 C	3M 3630-76
	RAL 7021M	3M 3630-22
	PMS WHITE	3M 3630-20/ 7725-10 TRANSLUCENT OPAQUE
	PMS 369 C	NA
	REFL. WHITE	3M 680-10

Disk 24in D/F Illuminated blade wall mount bracket EVOLVED			
Size	Sq.Ft.	Sq.M.	Volts
24"	3.14	.29	120/277

SCHEDULE								
SYMBOL	LABEL	QTY	MANUFACTURER	CATALOG	DESCRIPTION	LAMP OUTPUT	INPUT POWER	MOUNTING HEIGHT
	S	7	KICHLER	258377-1 MOD#11251/CP133537	LED WALL CYLINDER	700	14.7	5'
	W	1	LITHONIA LIGHTING	WDGE 1 LED P2 30K 80CRI VW	WDGE1 LED WITH P2 - PERFORMANCE PACKAGE, 3000K, 90 CRI, VISUAL COMFORT WIDE OPTIC	574	14.7	9'
	D	2	LITHONIA LIGHTING	LDN4CYL 30/20 L04 BR	4IN LDN CYLINDER, 3000K, 2000LM, BLACK, CRI80	1521	22.1	11'
	D1	10	LITHONIA LIGHTING	LDN4CYL 30/10 L04 BR	4IN LDN CYLINDER, 3000K, 1000LM, BLACK, CRI80	792	10.6	11'
	SA1	3	LITHONIA LIGHTING	1: DSX1 LED P4 40K 80CRI LCCO	D-SERIES SIZE 1 AREA LUMINAIRE P4 PERFORMANCE PACKAGE 4000K CCT 80 CRI LEFT CORNER EXTREME CUTOFF	10797	124	Base: 3' Pole: 15' Total: 18'
				2: DSX1 LED P4 40K 80CRI RCCO	D-SERIES SIZE 1 AREA LUMINAIRE P4 PERFORMANCE PACKAGE 4000K CCT 80 CRI RIGHT CORNER EXTREME CUTOFF	10797	124	
	SE	2	LITHONIA LIGHTING	DSX1 LED P6 40K 80CRI BL4	D-SERIES SIZE 1 AREA LUMINAIRE P6 PERFORMANCE PACKAGE 4000K CCT 80 CRI TYPE 4 EXTREME BACKLIGHT CONTROL	14158	165.2	Base: 3' Pole: 15' Total: 18'
	SE1	2	LITHONIA LIGHTING	DSX1 LED P5 40K 80CRI LCCO	D-SERIES SIZE 1 AREA LUMINAIRE P5 PERFORMANCE PACKAGE 4000K CCT 80 CRI LEFT CORNER CUTOFF EXTREME BACKLIGHT CONTROL	11873	138	Base: 3' Pole: 15' Total: 18'
	SE2	1	LITHONIA LIGHTING	DSX1 LED P5 40K 80CRI RCCO	D-SERIES SIZE 1 AREA LUMINAIRE P5 PERFORMANCE PACKAGE 4000K CCT 80 CRI RIGHT CORNER CUTOFF EXTREME BACKLIGHT CONTROL	11873	138	Base: 3' Pole: 15' Total: 18'
	SE3	1	LITHONIA LIGHTING	DSX1 LED P6 40K 80CRI RCCO	D-SERIES SIZE 1 AREA LUMINAIRE P6 PERFORMANCE PACKAGE 4000K CCT 80 CRI RIGHT CORNER CUTOFF EXTREME BACKLIGHT CONTROL	13831	165.2	Base: 3' Pole: 15' Total: 18'

Statistics						
Description	Symbol	Avg	Max	Min	Max/Min	Avg/Min
DRIVE THRU ENTRY	X	9.6 fc	11.3 fc	8.2 fc	1.4:1	1.2:1
DRIVE THRU WINDOW	X	11.6 fc	15.4 fc	8.3 fc	1.9:1	1.4:1
ENTIRE SITE	+	5.5 fc	23.7 fc	0.0 fc	N/A	N/A
FRONT PARKING	X	3.9 fc	8.3 fc	2.2 fc	3.8:1	1.8:1
MORE FRONT PARKING	X	4.4 fc	14.6 fc	0.1 fc	2.5:1	1.8:1
SIDE PARKING	X	4.5 fc	13.5 fc	0.0 fc	N/A	N/A
PROPERTY LINE	+	0.1 fc	0.8 fc	0.0 fc	N/A	N/A
PATIO	X	12.6 fc	17.6 fc	7.0 fc	2.5:1	1.8:1
SERVICE DOOR	X	11.5 fc	11.5 fc	11.5 fc	1.0:1	1.0:1
SE PROPERTY LINE	+	0.1 fc	0.1 fc	0.0 fc	N/A	N/A



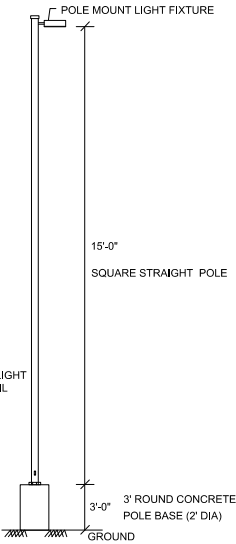
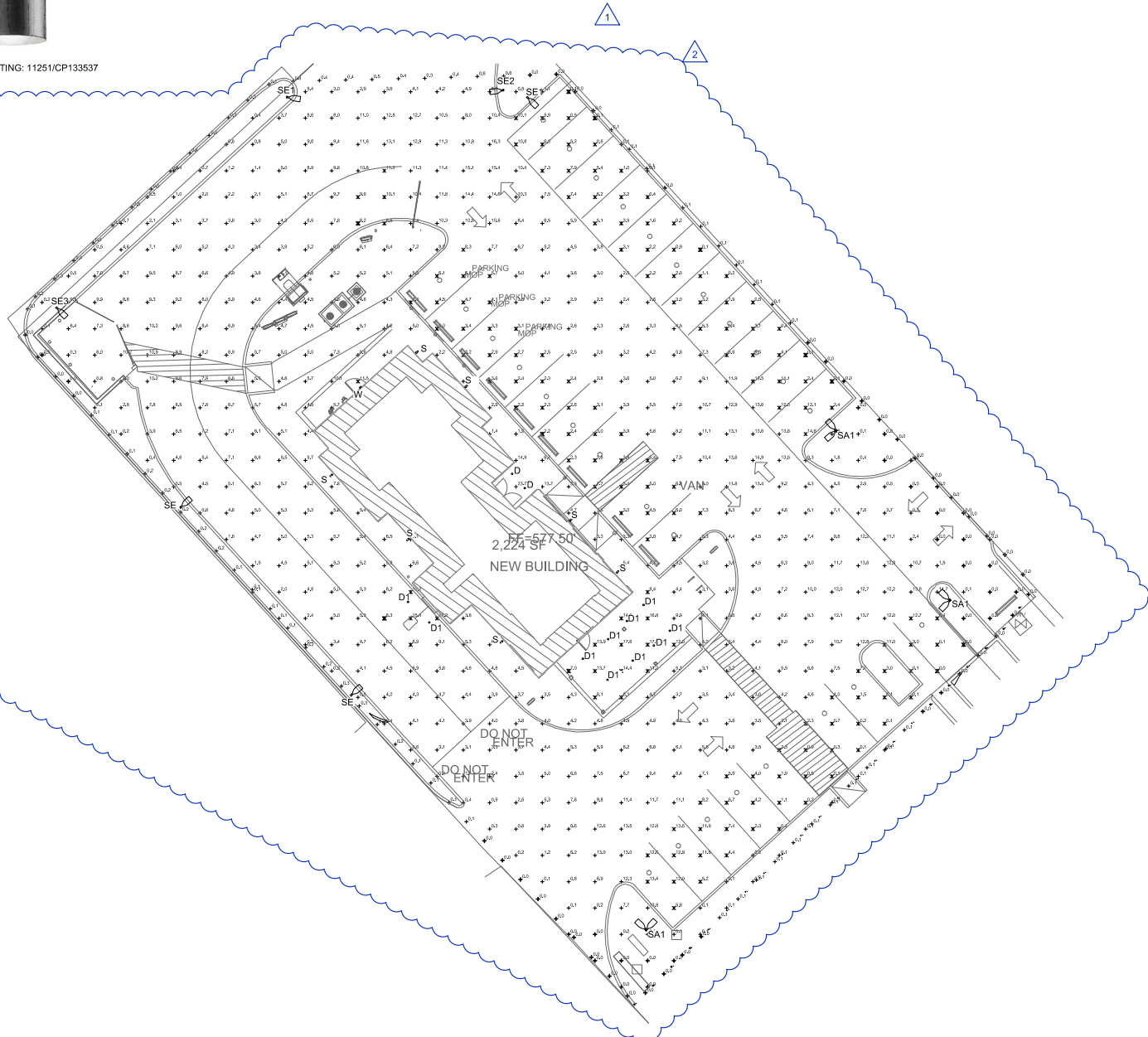
KICHLER LIGHTING: 11251/CP133537
TYPE S



LITHONIA LIGHTING: LDN4
TYPE D, D1



LITHONIA LIGHTING: WDGE1
TYPE W



SITE PHOTOMETRIC PLAN
SCALE: 1/16"=1'-0"

1



FOR
REVIEW ONLY
NOT FOR
CONSTRUCTION

CONTRACTOR SHALL VERIFY ALL CONDITIONS
AND DIMENSIONS AT THE JOB SITE AND
NOTIFY THE ARCHITECT OF ANY DIMENSIONAL
ERRORS, OMISSIONS OR DISCREPANCIES
BEFORE BEGINNING OR FABRICATING ANY
WORK. DO NOT SCALE DRAWINGS.

CJ REAL ESTATE, LLC
3825 Camp Bowie Blvd
Fort Worth, TX 76107
817.665.2343 (o)

REVISION SCHEDULE			
REV	DATE	BY	DESCRIPTIONS
1	10/17/2024	ZA	SITE UPDATE
2	12/06/2024	ZA	CITY COMMENTS

PROJECT NAME: **STARBUCKS SHELL BUILDING**

PROJECT ADDRESS: **BOULEVARD 26
NORTH RICHLAND HILLS, TX**

PROJECT #: 24-XXXX
ORIGINAL ISSUE: 8-29-24
DATE: PRODUCTION
DESIGNER: ZA
CHECKED BY: AH

SHEET TITLE: **SITE
PHOTOMETRIC
PLAN**

SHEET NUMBER:

ES1.1