



CITY OF NORTH RICHLAND HILLS

October 29, 2019

20-004 PUBLIC WORKS RESTROOM RENOVATION PROJECT
ADDENDUM NO. 2

- 1) Specifications provided for the New Toilet Partitions, hardware and Toilet Stalls Accessories
- 2) On the Demolition plans, Sheet A101 has been replaced with attached drawing A101 REV1.
- 3) ADDENDUM NO. 1 is the pre-bid meeting minutes and sign-in sheet, and will not have a separate signature sheet.

THIS ADDENDUM MUST BE SIGNED AND RETURNED WITH YOUR BID.

Acknowledge receipt of this addendum by inserting these pages with your bid.
This addendum form is a part of the contract documents and it so modifies, amends, deletes and/or adds to the original bid document.

Name and Address of Company:

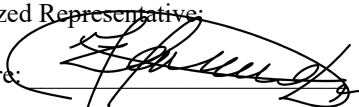
Time Manner Construction LLC

2625 Old Denton Rd St 500-E

Carrollton/TX/75007

FAX: (469)758-1115

Authorized Representative:

Signature: 

Name: Suzana Ingles

Title: Project Manager

Phone: (469)758-1112

Email: suzana@timemanner.com

**SECTION 10 2113
METAL TOILET COMPARTMENTS**

PART 1 – GENERAL

1.01 SUMMARY

- A. Section Includes:
 - 1. Extent of toilet partitions is indicated on Drawings.
 - 2. Styles of toilet compartments include:
 - a. Powder Coated Finished, Floor-Anchored, Overhead Braced
 - 3. Styles of Screens include:
 - a. Powder Coated Finished, Floor-Anchored

1.02 SUBMITTALS

- A. Submit "Letter of Conformance" in accordance with Section 01 3300 with the following supporting data:
 - 1. Product Data: Submit manufacturer's detailed technical data for materials, fabrication, and installation, including catalog cuts of anchors, hardware, fastenings, and accessories.
 - 2. Shop Drawings: Submit shop drawings for fabrication and erection of toilet partition assemblies not fully described by product drawings, templates, and instructions for installation of anchorage devices built into other work.

1.03 QUALITY ASSURANCE

- A. Field Measurements: Take field measurements prior to preparation of shop drawings and fabrication where possible, to ensure proper fitting of work. However, allow for adjustments within specified tolerances wherever taking field measurements before fabrication might delay work.
- B. Coordination: Furnish inserts and anchorages which must be built into other work for installation of toilet partitions and related work; coordinate delivery with other work to avoid delay.

PART 2 - PRODUCTS

2.01 MANUFACTURERS

- A. Approved Manufacturers:
 - 1. Accurate Partitions Corp. (708-442-6800)
 - a. Toilet Comp: "Concord"
 - b. Urinal Screens: Floor mounted with post supports.
 - 2. Knickerbocker Partition Corp. (516-546-0550)
 - a. Toilet Comp: "Metropolitan:
 - b. Urinal Screens: Floor mounted with post supports.
 - 3. Metpar Corporation (888-638-7271)
 - a. Toilet Compartments: "Corinthian FP-500"
 - b. Urinal Screens: Type "PF"
 - 4. Flush-Metal Partition Corporation (718-784-3380)
 - a. Toilet Compartments: "Flushite"

- b. Urinal Screens: "PS-Post Supported"
- 5. Hadrian Mfg., Inc. (440-974-7120)
 - a. Toilet Compartments: "Headrail Braced"
 - b. Urinal Screens: Floor mounted with Post Support

2.02 MATERIALS

- A. General: Doors, panels, pilasters and urinal screens shall be manufactured with a honeycomb core bonded to the steel with a non-toxic adhesive to ensure solid construction and sound attenuation. All four components shall be assembled with a continuous roll-formed interlocking crown molding, with the corners brazed and ground smooth.
- B. Doors, Panels, and Pilasters: Sheet steel faces, pressure bonded to sound deadening core, formed and closed edges, mitered and welded corners ground smooth.
 - 1. Panel and Door Faces: 20 gage.
 - 2. Pilaster Faces: 18 gage.
 - 3. Reinforcement: 12 gage.
- C. Door and Panel Dimensions:
 - 1. Thickness: 1 inch
 - 2. Door Width: 24 inch
 - 3. Accessible Door Width: 36 inch, out-swinging.
 - 4. Height: 58 inch
- D. Pilasters: 1-1/4 inch thick, of sizes required to suit compartment width and spacing
- E. Urinal screens: Wall mounted with two panel brackets 24x42

2.03 ACCESSORIES

- A. Pilaster Shoes: Formed satin finish, 3 inch high, concealing floor and ceiling fastenings. Provide adjustment for floor variations with screw jack through steel saddles integral with pilaster. Provide ceiling attachment using two adjustable hanging studs, attached to above ceiling framing.
- B. Head Rails: Hollow stainless steel tube, 1 x 1-5/8 inch size, with anti-grip profile and cast socket wall brackets.
- C. Brackets: stainless steel.
- D. Attachments, Screws, and Bolts: Stainless steel, tamper proof type.
 - 1. For attaching panels and pilasters to brackets: Through-bolts and nuts; tamper proof.
- E. Hardware: Satin
 - 1. Pivot hinges, gravity type, adjustable for door close positioning; two for each door.
 - 2. Nylon bearings.
 - 3. Thumb turn door latch with exterior emergency access feature.
 - 4. Door strike and keeper with rubber bumper; mounted on pilaster in alignment with door latch
 - 5. Coat hook with rubber bumper; one for each compartment, mounted on door panel.
 - 6. Furnish door pull for outswinging doors.

2.04 FINISHES

- A. Color: As selected by Owner.

PART 3 - EXECUTION

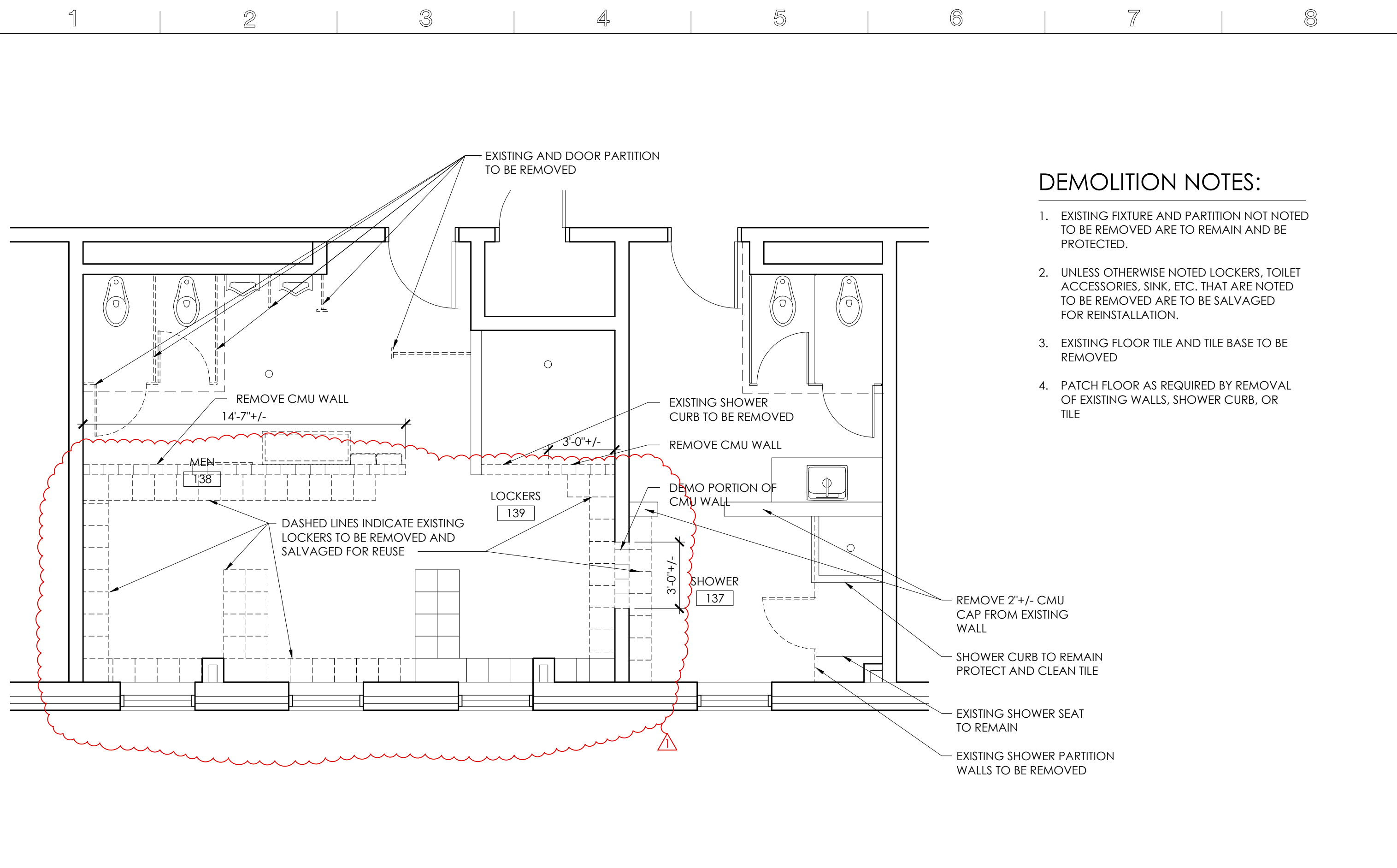
3.01 INSTALLATION

- A. General: Comply with manufacturer's recommended procedures and installation sequence. Install partitions rigid, straight, plumb, and level. Provide clearances of not more than 1/2" between pilasters and panels, and not more than 1" between panels and walls. Secure panels to walls with not less than two stirrup brackets attached near top and bottom of panel. Locate wall brackets so that holes for wall anchorages occur in masonry or tile joints. Secure panels to pilasters with not less than two stirrup brackets located to align with stirrup brackets at wall. Secure panels in position with manufacturer's recommended anchoring devices.
- B. Floor Supported Partitions and Screens: Set pilaster units with anchorages having not less than 2" penetration into structural floor, unless otherwise recommended by partition manufacturer. Level, plumb, and tighten installation with devices furnished. Hang doors and adjust so that tops of doors are level with tops of pilasters when doors are in closed position.
- C. Overhead Braced Compartments: Secure overhead brace to each pilaster with not less than two stirrup brackets. Hang doors and adjust so that top of doors are parallel with overhead brace when doors are in closed position.
- D. Screens: Attach with anchoring devices as recommended by manufacturer to suit supporting structure set units to provide support and to resist lateral impact.

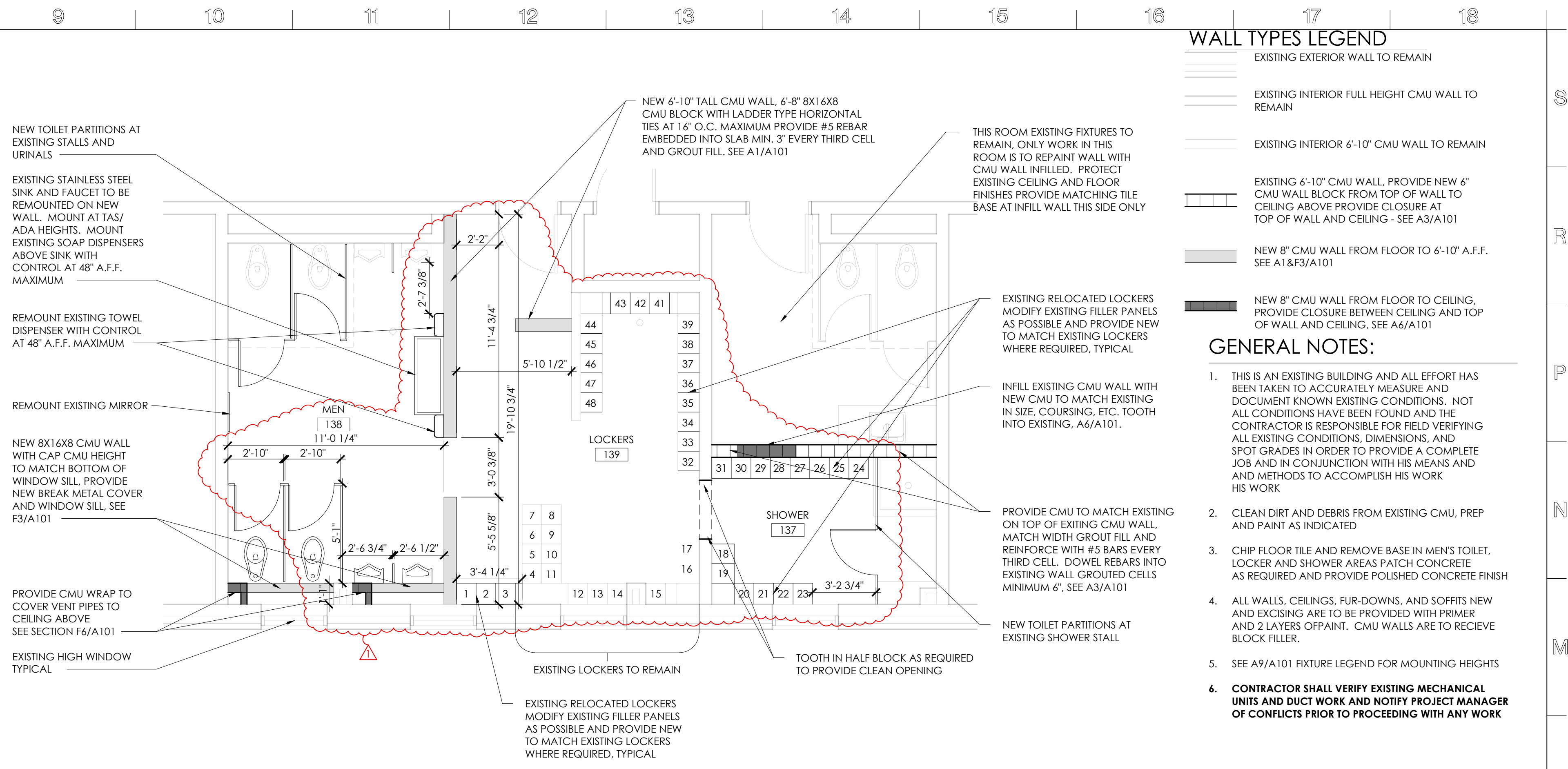
3.02 ADJUST AND CLEAN

- A. Hardware Adjustment: Adjust and lubricate hardware for proper operation. Set hinges on in-swinging doors to hold open approximately 30 degrees from closed position when unlatched. Set hinges on outswinging doors (and entrance swing doors) to return to fully closed position.
- B. Clean exposed surfaces of partition systems using materials and methods recommended by manufacturer, and provide protection as necessary to prevent damage during remainder of construction period.

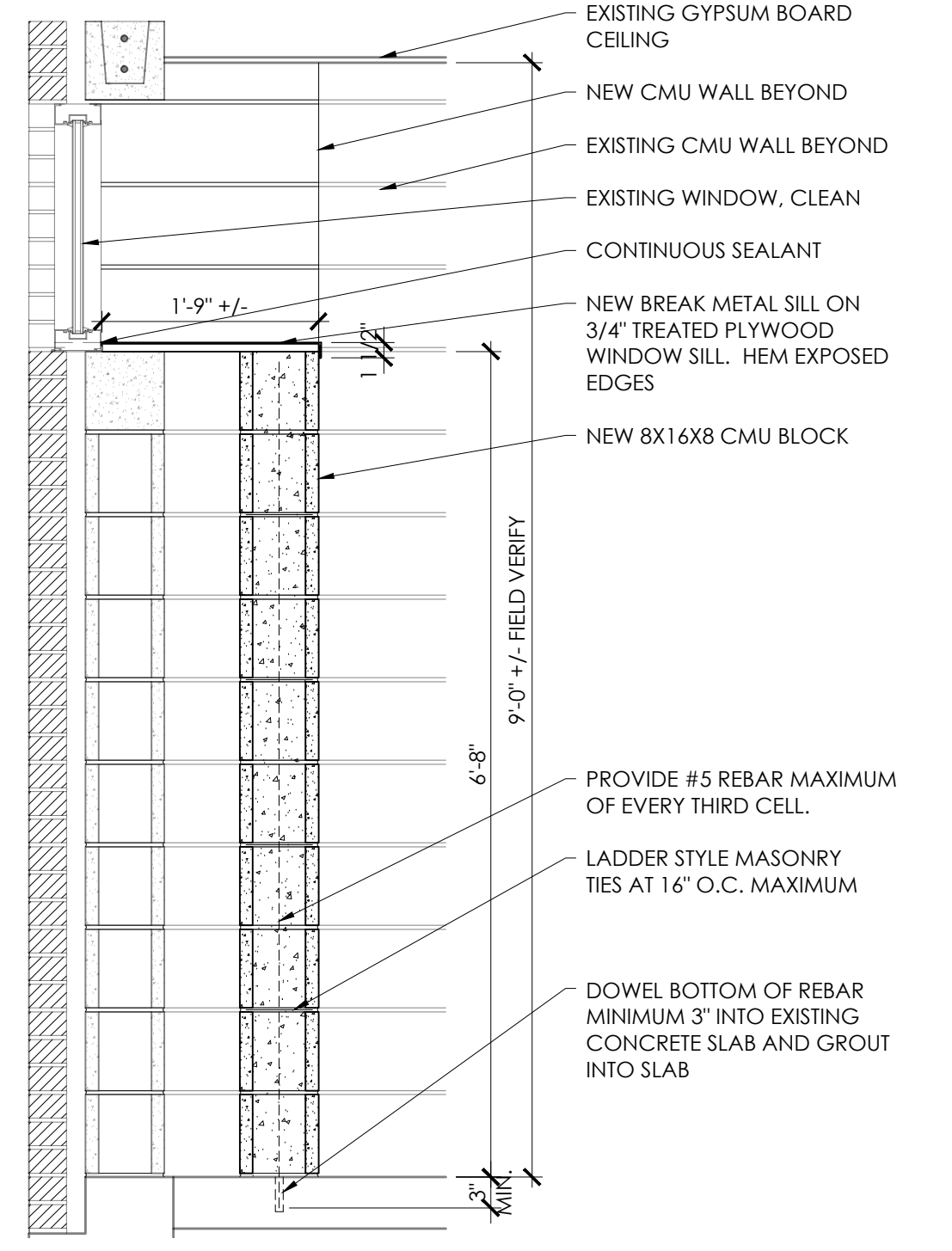
END OF SECTION



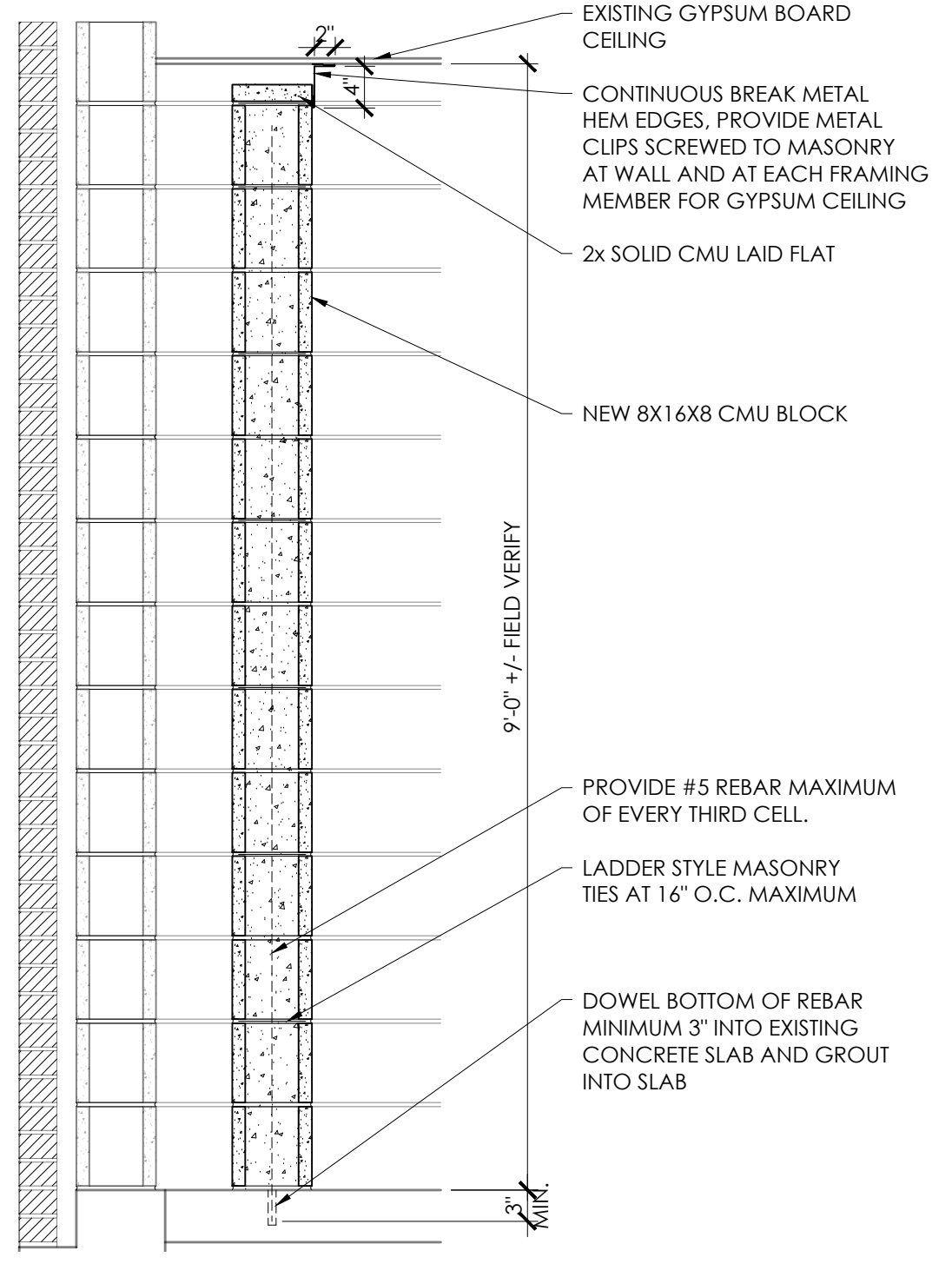
L1 PARTIAL DEMOLITION PLAN - TOILET RENOVATIONS
SCALE: 1/4" = 1'-0"



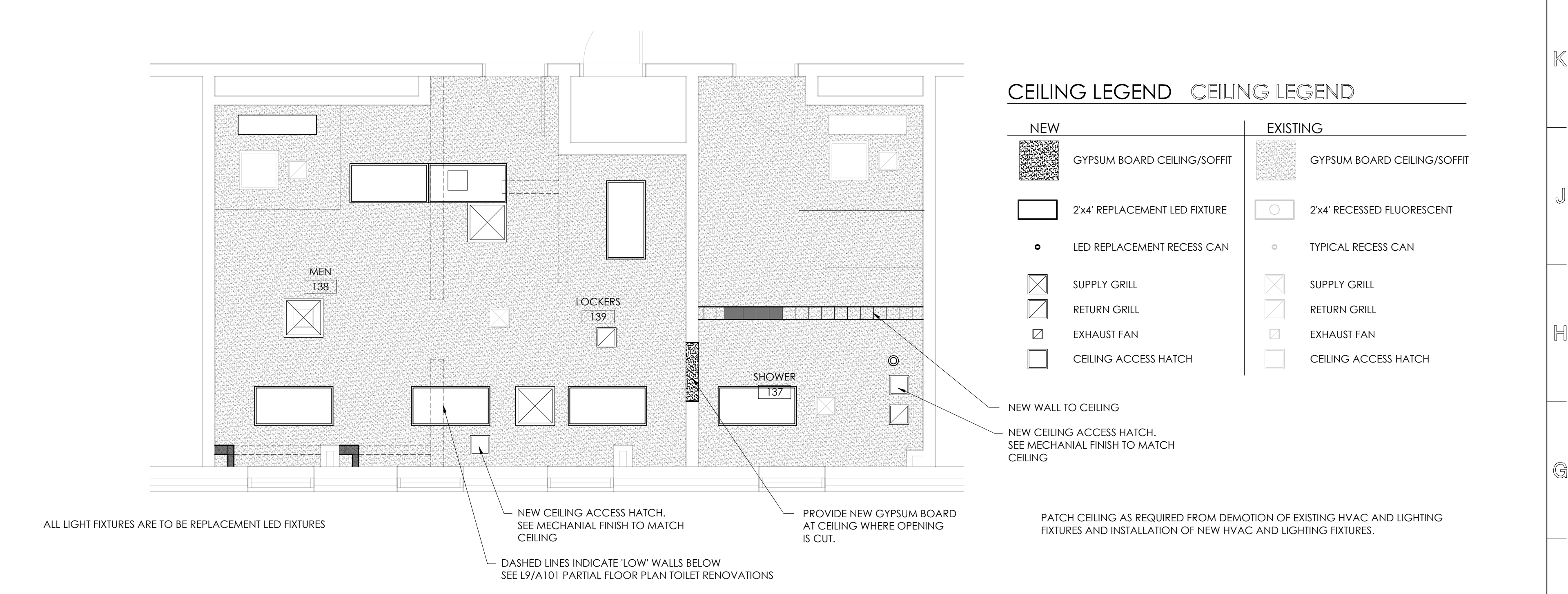
L9 PARTIAL FLOOR PLAN - TOILET RENOVATIONS
SCALE: 1/4" = 1'-0"



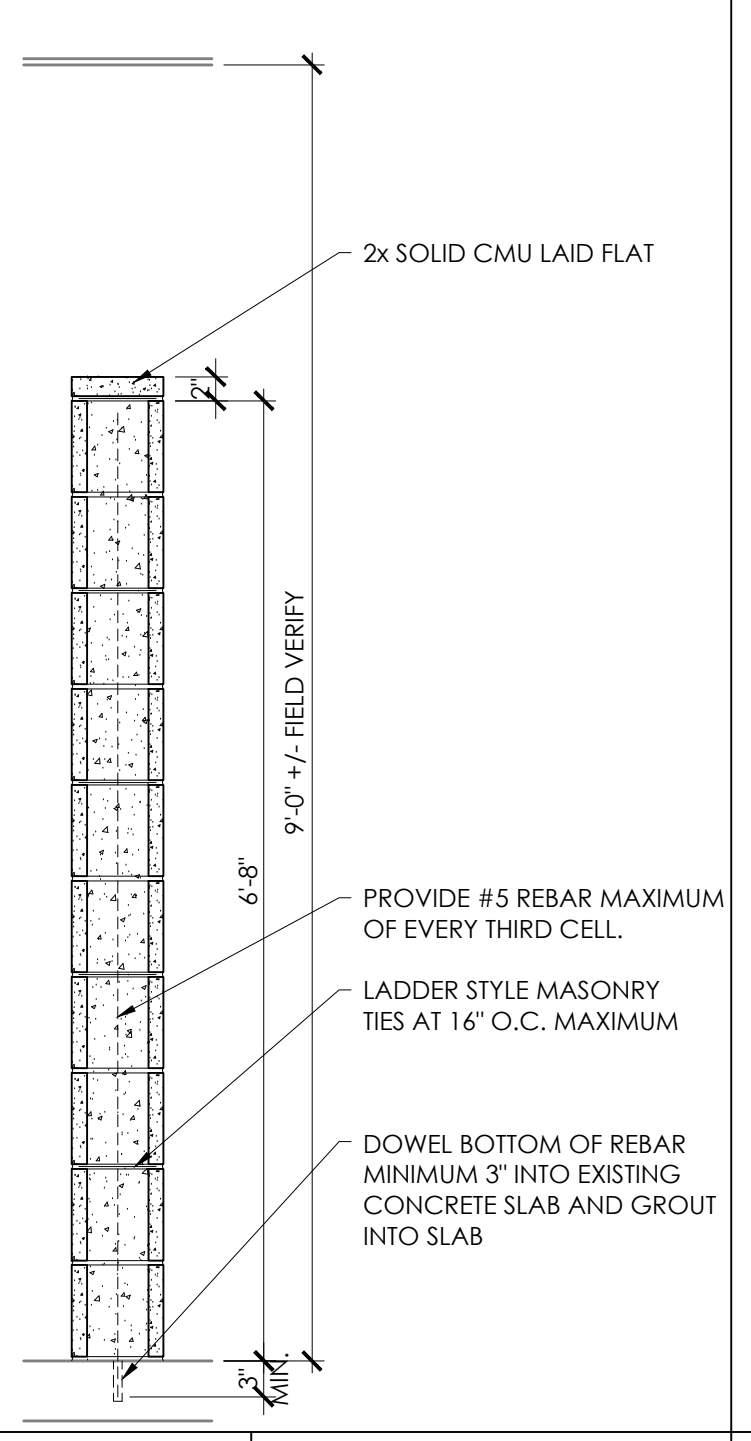
F3 WALL SECTION
SCALE: 3/4" = 1'-0"



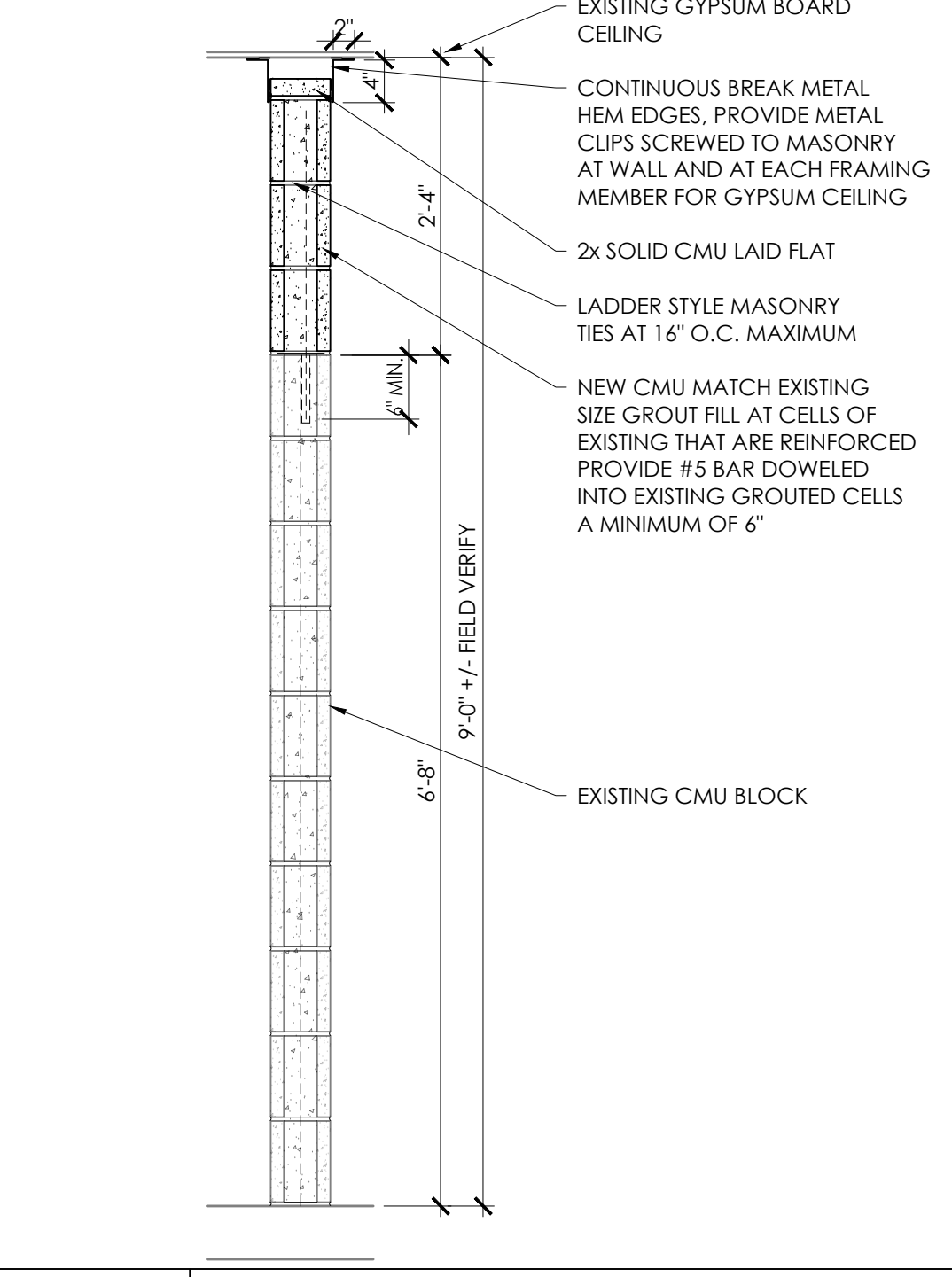
F6 WALL SECTION
SCALE: 3/4" = 1'-0"



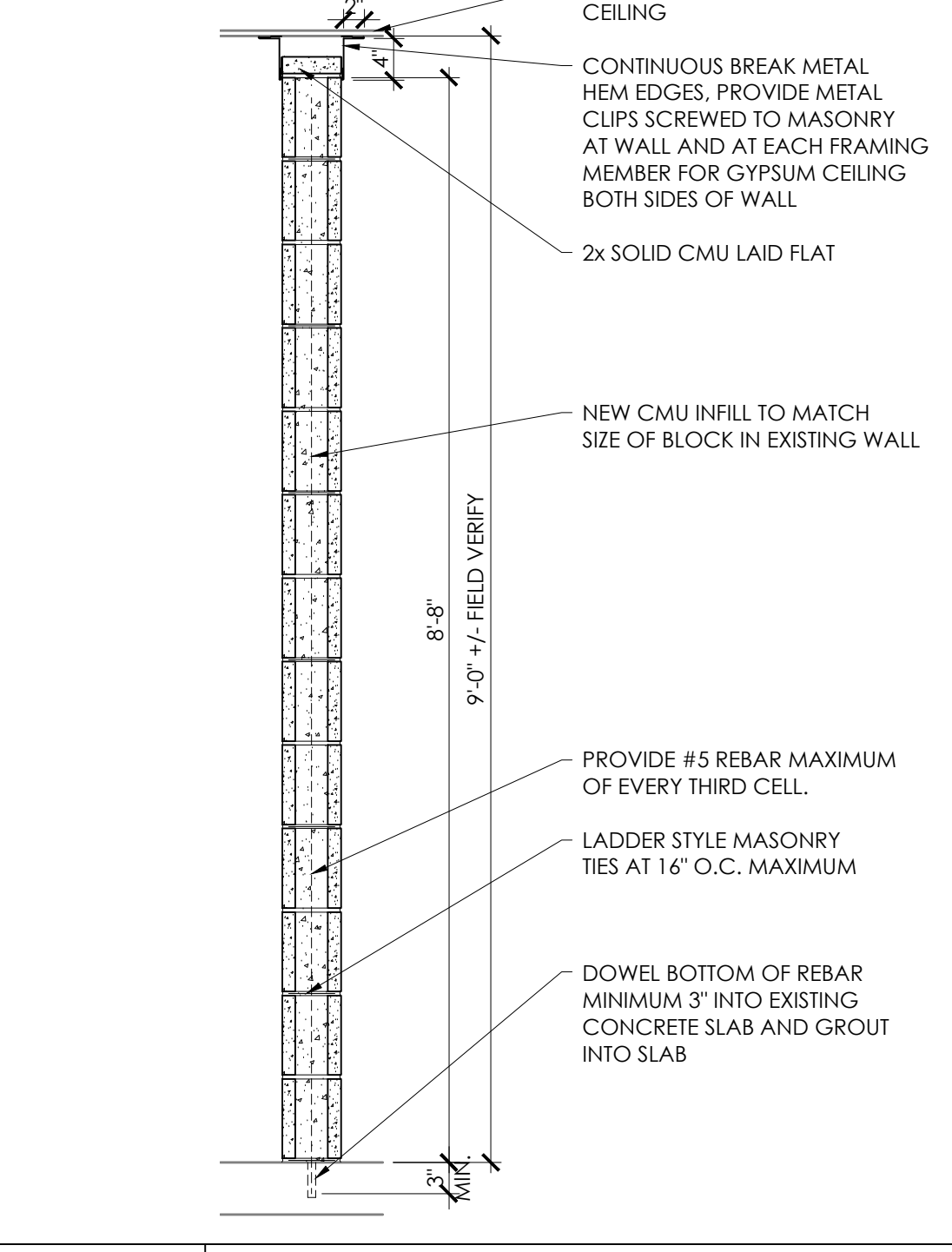
F9 PARTIAL REFLECTED CEILING PLAN - TOILET RENOVATIONS
SCALE: 1/4" = 1'-0"



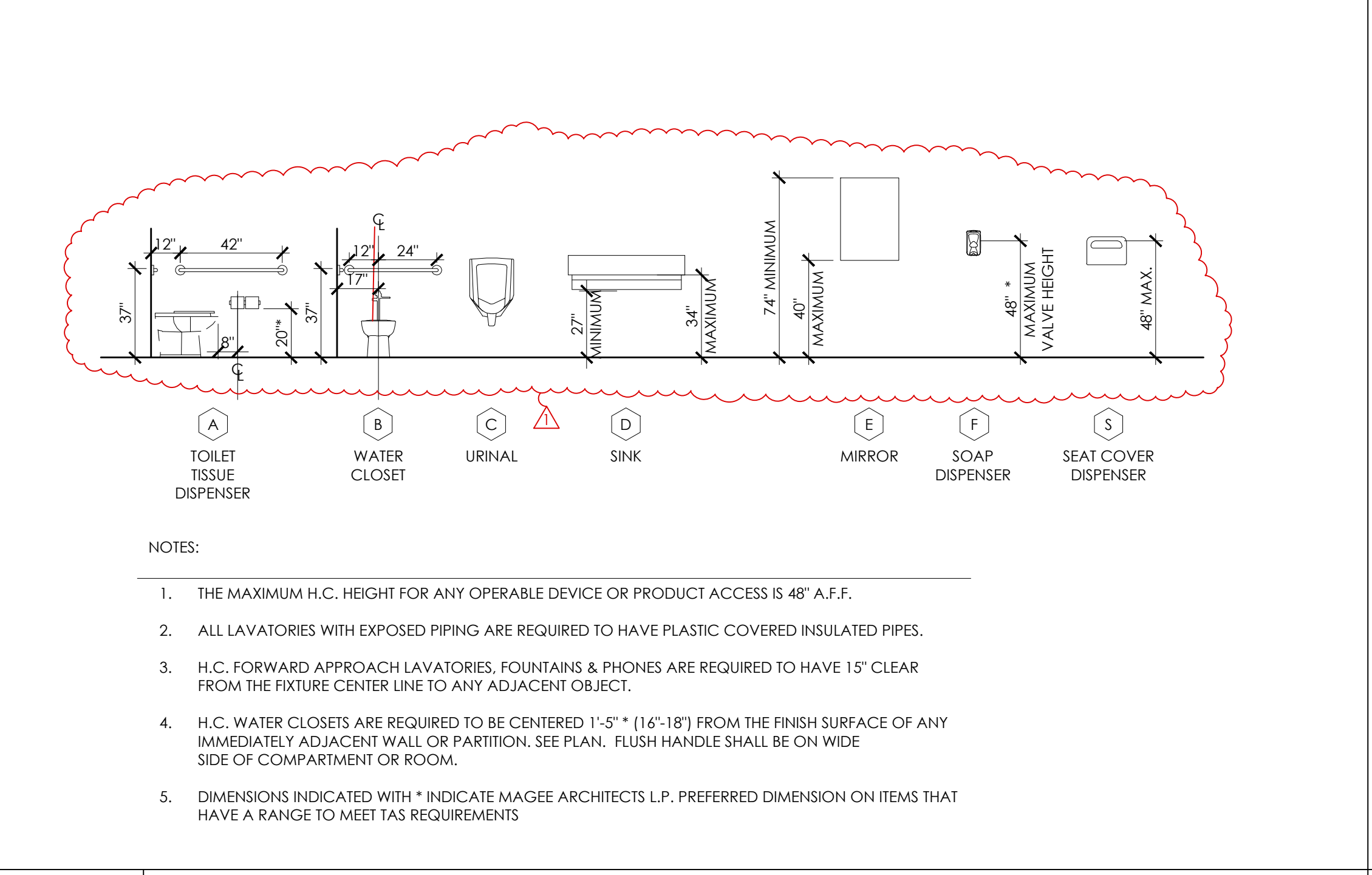
A1 SECTION
SCALE: 3/4" = 1'-0"



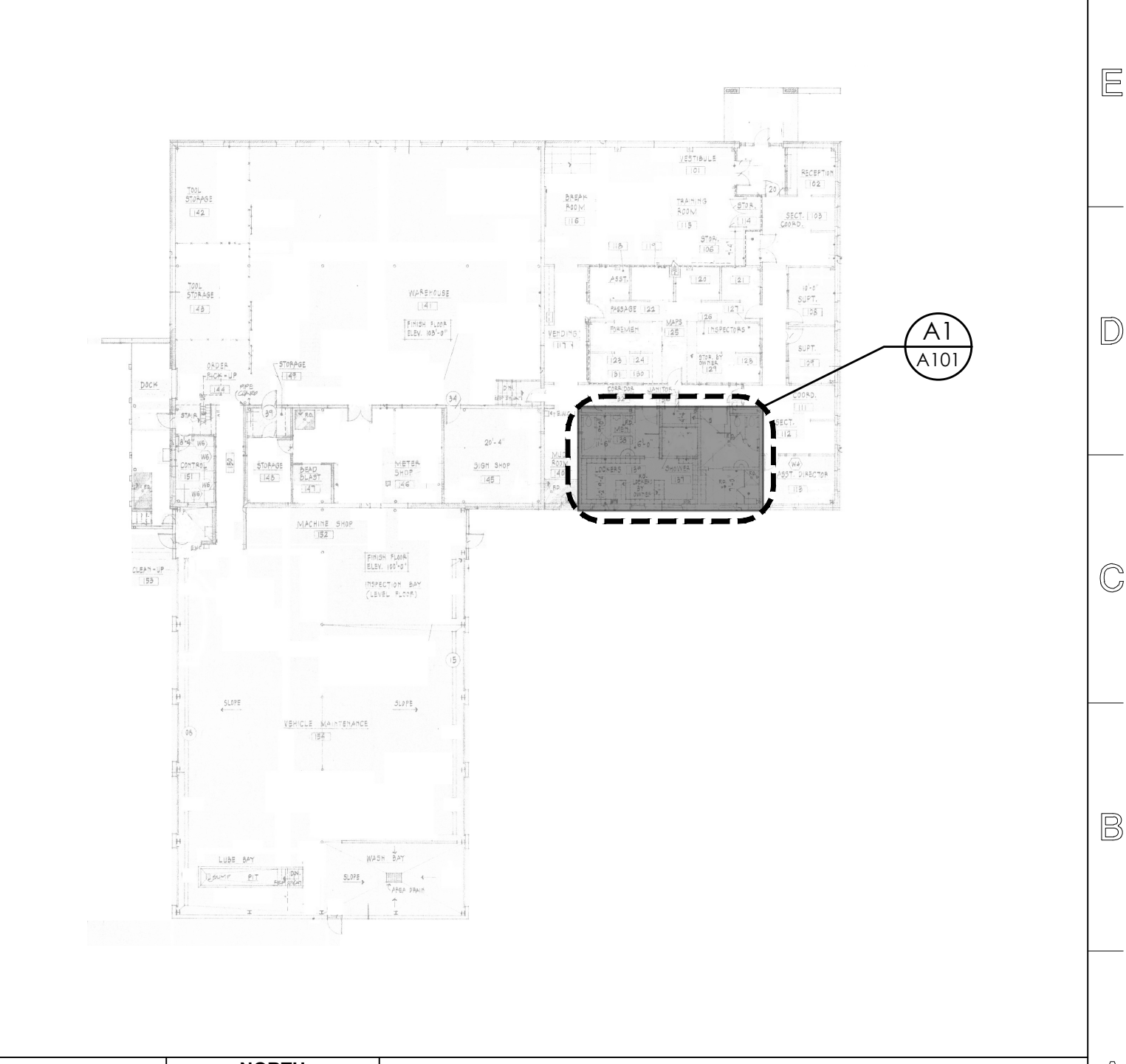
A3 WALL SECTION
SCALE: 3/4" = 1'-0"



A6 WALL SECTION
SCALE: 3/4" = 1'-0"



A9 FIXTURE LEGEND
SCALE: 1/4" = 1'-0"



A15 KEY PLAN
SCALE: NOT TO SCALE

- WALL TYPES LEGEND**
- EXISTING EXTERIOR WALL TO REMAIN
 - EXISTING INTERIOR FULL HEIGHT CMU WALL TO REMAIN
 - EXISTING INTERIOR 6'-10" CMU WALL TO REMAIN
 - EXISTING 6'-10" CMU WALL, PROVIDE NEW 6" CMU WALL BLOCK FROM TOP OF WALL TO CEILING ABOVE PROVIDE CLOSURE AT TOP OF WALL AND CEILING - SEE A3/A101
 - NEW 8" CMU WALL FROM FLOOR TO 6'-10" A.F.F. SEE A1&F3/A101
 - NEW 8" CMU WALL FROM FLOOR TO CEILING, PROVIDE CLOSURE BETWEEN CEILING AND TOP OF WALL AND CEILING - SEE A6/A101
- GENERAL NOTES:**
- THIS IS AN EXISTING BUILDING AND ALL EFFORT HAS BEEN TAKEN TO ACCURATELY MEASURE AND DOCUMENT KNOWN EXISTING CONDITIONS. NOT ALL CONDITIONS HAVE BEEN FOUND AND THE CONTRACTOR IS RESPONSIBLE FOR FIELD VERIFYING ALL EXISTING CONDITIONS, DIMENSIONS, AND SPOT GRADES IN ORDER TO PROVIDE A COMPLETE JOB AND IN CONJUNCTION WITH HIS MEANS AND METHODS TO ACCOMPLISH HIS WORK HIS WORK
 - CLEAN DIRT AND DEBRIS FROM EXISTING CMU, PREP AND PAINT AS INDICATED
 - CHIP FLOOR TILE AND REMOVE BASE IN MEN'S TOILET, LOCKER AND SHOWER AREAS PATCH CONCRETE AS REQUIRED AND PROVIDE POLISHED CONCRETE FINISH
 - ALL WALLS, CEILINGS, FUR-DOWNS, AND SOFFITS NEW AND EXISTING ARE TO BE PROVIDED WITH PRIMER AND 2 LAYERS OF PAINT. CMU WALLS ARE TO RECEIVE BLOCK FILLER.
 - SEE A9/A101 FIXTURE LEGEND FOR MOUNTING HEIGHTS
 - CONTRACTOR SHALL VERIFY EXISTING MECHANICAL UNITS AND DUCT WORK AND NOTIFY PROJECT MANAGER OF CONFLICTS PRIOR TO PROCEEDING WITH ANY WORK

MAGEE ARCHITECTS, L.P.
DESIGNERS • PLANNERS • INTERIORS
HTTP://WWW.MAGEE-ARCHITECTS.COM/

NORTH RICHLAND HILLS SERVICE CENTER REMODEL
7200 A DICK FISHER DRIVE SOUTH
NORTH RICHLAND HILLS, TEXAS 76180

PROJECT NO.: 1708-19
DATE: 08/23/19
DRAWN: TRW
REVISED: 10/29/19

THE SEAL APPEARING ON THIS DOCUMENT WAS AUTHORIZED BY ALAN R. MAGEE TX NO. 7028 AUGUST 23, 2019

SHEET CONTENT
DEMOLITION PLAN
FLOOR PLAN
REFLECTED CEILING PLAN
WALL SECTIONS

SHEET NUMBER
A101

COPYRIGHT © 2016, MAGEE ARCHITECTS, L.P.