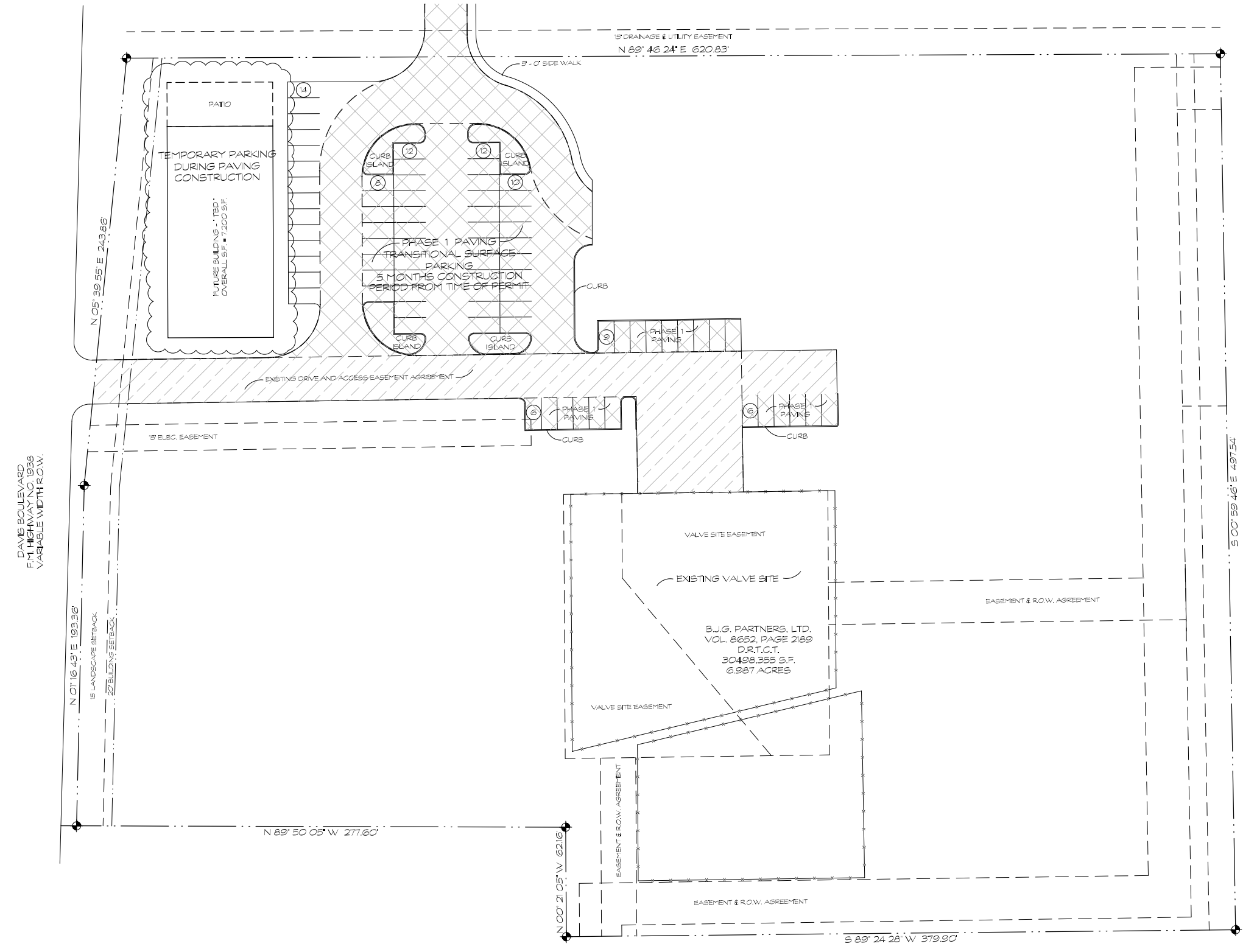


SITE DATA SUMMARY CHART	
ZONING:	TOD - TRANSIT ORIENTED DEV.
PROPOSED USE:	VARES - REFER TO SITE PLAN
GROSS LAND AREA:	304,355 S.F. (6.987 ACRES)
BUILDING FOOTPRINT:	7,200 S.F.
LOT BUILDING COVERAGE:	2.4%
RETAIL PARKING:	1 SPACE PER 250 S.F.
TOTAL PROVIDED PARKING:	63 SPACES



A SITE DEVELOPMENT PLAN



SITE DEVELOPMENT PLAN

A NEW RETAIL DEVELOPMENT FOR:

XXXXXXXXXXXXXXXXXX
XXXX XXXX XXXX NORTH RICHLAND HILLS, TEXAS 79082

FOR: XXXXXXXXXXXXXXXXXXXX
XXXX XXXX XXXX NORTH RICHLAND HILLS, TEXAS 79082
PH. 817-608-0254 FX. 817-681-0287

SHEET NUMBER
A1.02
X OF X